

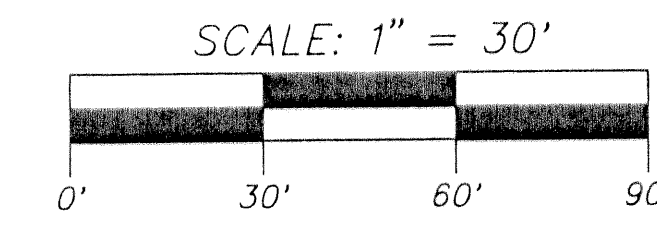
OCEAN BREEZES

BEING A SUBDIVISION OF A PORTION OF SECTION 21, TOWNSHIP 46 SOUTH, RANGE 43 EAST, CITY OF DELRAY BEACH, PALM BEACH COUNTY, FLORIDA

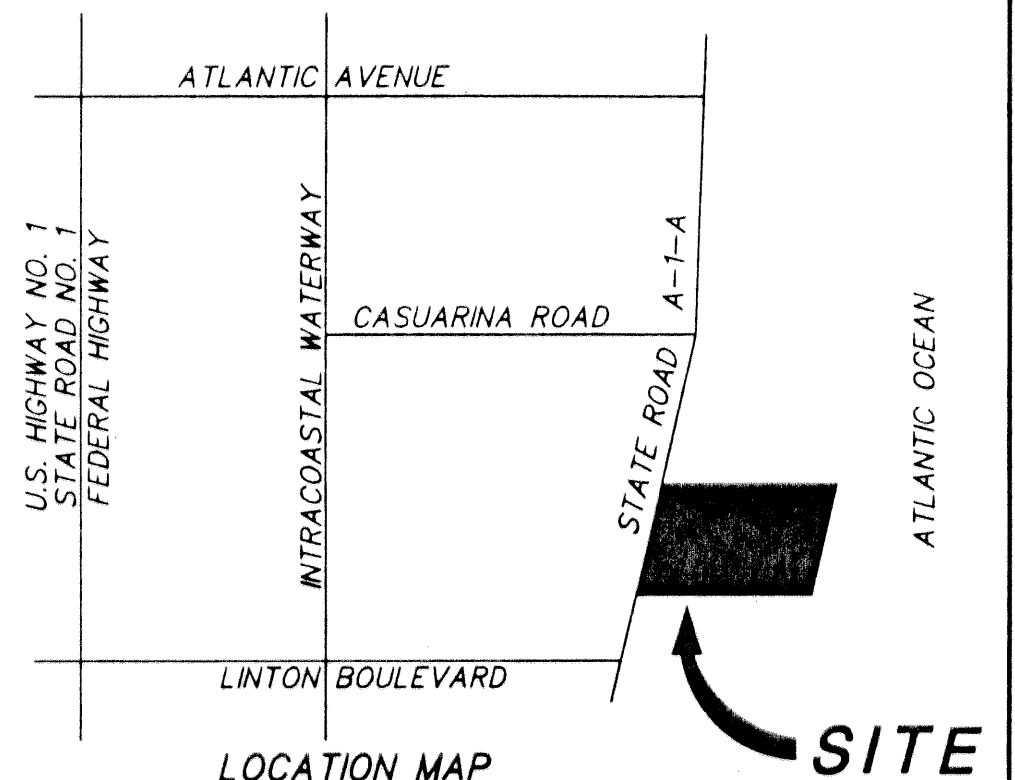
SHEET 2 OF 2

JUNE 2002

THIS INSTRUMENT WAS PREPARED BY PAUL D. ENGLE, IN THE OFFICE OF O'BRIEN, SUTER & O'BRIEN, INC., 2601 NORTH FEDERAL HIGHWAY, DELRAY BEACH, FLORIDA 33483 (561) 276-4501



COUNTY OF PALM BEACH
STATE OF FLORIDA
THIS PLAT WAS FILED FOR RECORD AT _____
THIS _____ DAY OF _____
20____, AND DULY RECORDED IN PLAT BOOK NO. _____
ON PAGE _____
DORTHY H. WILKEN, CLERK OF CIRCUIT COURT
BY _____ D.C.



NOTES:

ALL BEARINGS SHOWN HEREON ARE RELATIVE TO THE COASTAL CONSTRUCTION CONTROL LINE (PLAT BOOK 80, PAGE 153) AS IT PASSES THROUGH SUBJECT PARCEL HAVING A BEARING OF S.6°55'15\"

NOTICE: THIS PLAT, AS RECORDED IN ITS GRAPHIC FORM IS THE OFFICIAL DEPICTION OF THE SUBDIVIDED LANDS DESCRIBED HEREIN AND WILL IN NO CIRCUMSTANCES BE SUPPLANTED IN AUTHORITY BY ANY OTHER GRAPHIC OR DIGITAL FORM OF THE PLAT. THERE MAY BE ADDITIONAL RESTRICTIONS THAT ARE NOT RECORDED ON THIS PLAT THAT MAY BE FOUND IN THE PUBLIC RECORDS OF THIS COUNTY.

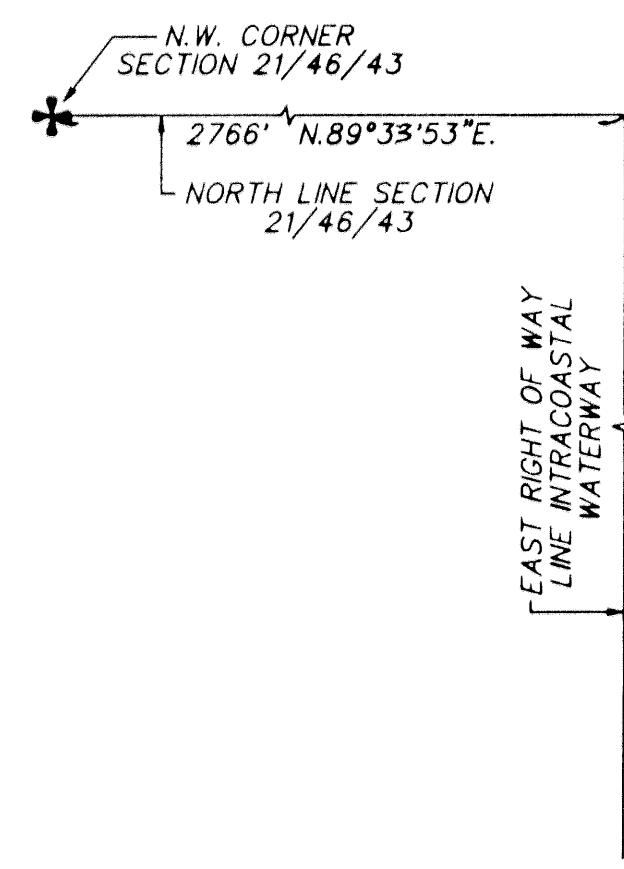
THE CITY OF DELRAY BEACH IS HEREBY GRANTED THE RIGHT OF ACCESS FOR EMERGENCY AND MAINTENANCE PURPOSES.

THIS INSTRUMENT WAS PREPARED BY PAUL D. ENGLE, IN THE OFFICE OF O'BRIEN, SUTER & O'BRIEN, INC., 2601 NORTH FEDERAL HIGHWAY, DELRAY BEACH, FLORIDA 33483 (561) 276-4501.

PERMANENT REFERENCE MONUMENTS ARE SHOWN THUS: □

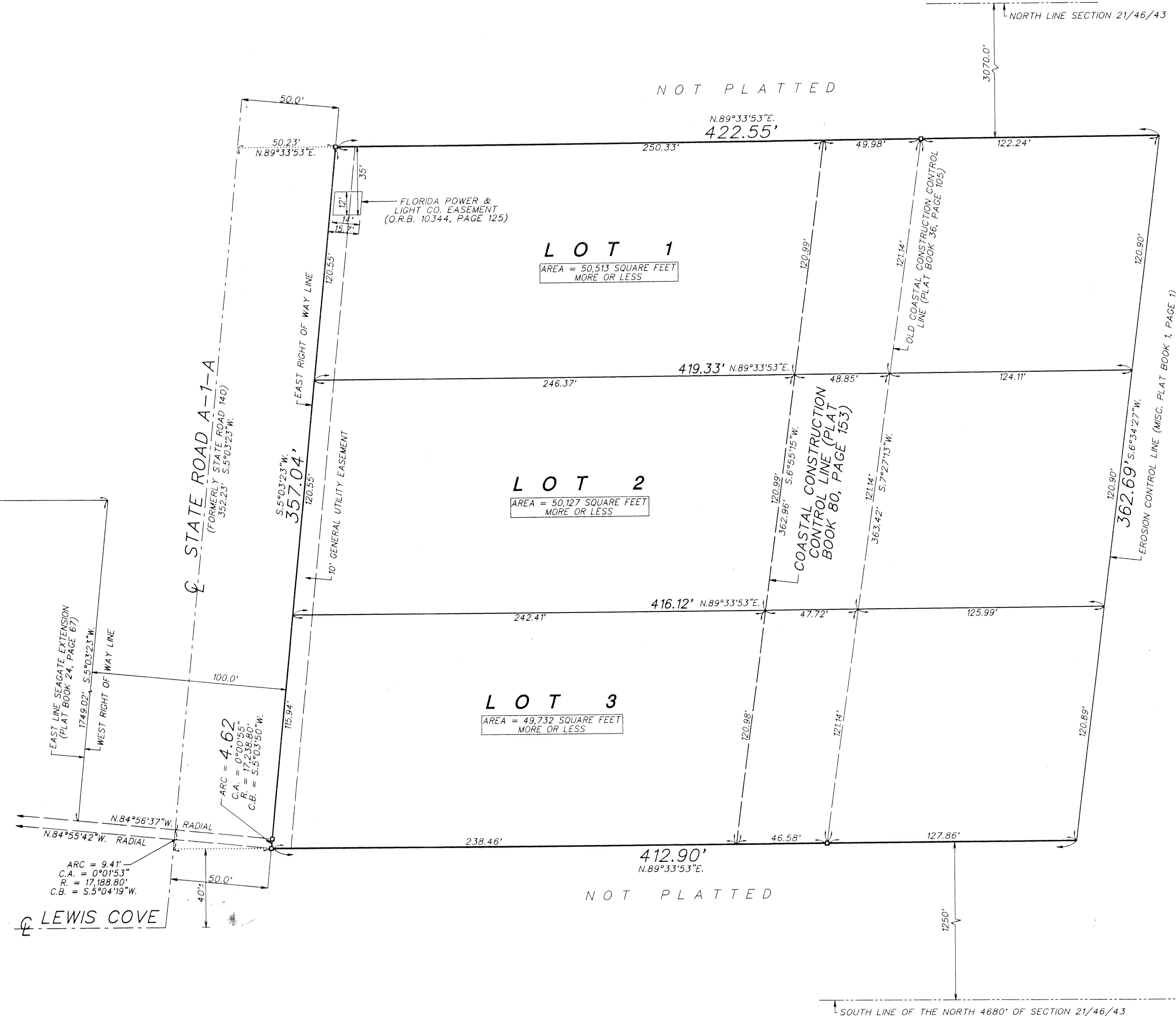
THERE SHALL BE NO BUILDINGS OR ANY KIND OF CONSTRUCTION PLACED ON UTILITY OR DRAINAGE EASEMENTS, CONSTRUCTION OR LANDSCAPING UPON MAINTENANCE OR MAINTENANCE ACCESS EASEMENTS MUST BE IN CONFORMANCE WITH ALL BUILDING AND ZONING CODES AND/OR ORDINANCES OF THE CITY OF DELRAY BEACH.

THERE SHALL BE NO TREES OR SHRUBS PLACED ON UTILITY EASEMENTS WHICH ARE PROVIDED FOR WATER AND SEWER USE OR UPON DRAINAGE EASEMENTS, LANDSCAPING ON ANY OTHER UTILITY EASEMENT SHALL BE ALLOWED ONLY AFTER CONSENT OF ALL UTILITY COMPANIES OCCUPYING SAME.



- LEGEND:
 C = CENTERLINE
 O.R.B. = OFFICIAL RECORD BOOK
 C.A. = CENTRAL ANGLE
 R. = RADIUS
 C.B. = CHORD BEARING

SECTION 21/46/43 = SECTION 21 TOWNSHIP 46 SOUTH, RANGE 43 EAST



A T L A N T I C O C E A N

NOT PLATTED

NOT PLATTED

SOUTH LINE OF THE NORTH 4680' OF SECTION 21/46/43