



CARNAHAN · PROCTOR · CROSS, INC.

CONSULTING ENGINEERS · SURVEYORS · PLANNERS

6101 WEST ATLANTIC BOULEVARD, MARGATE, FLORIDA 33063
PHONE: 954-972-3959 FAX: 954-972-4178

AUGUST 2002

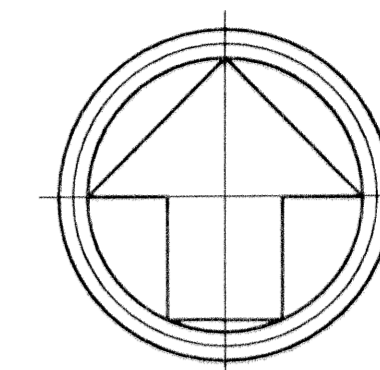
991010

JJM

ANTHONY GROVES P.U.D.

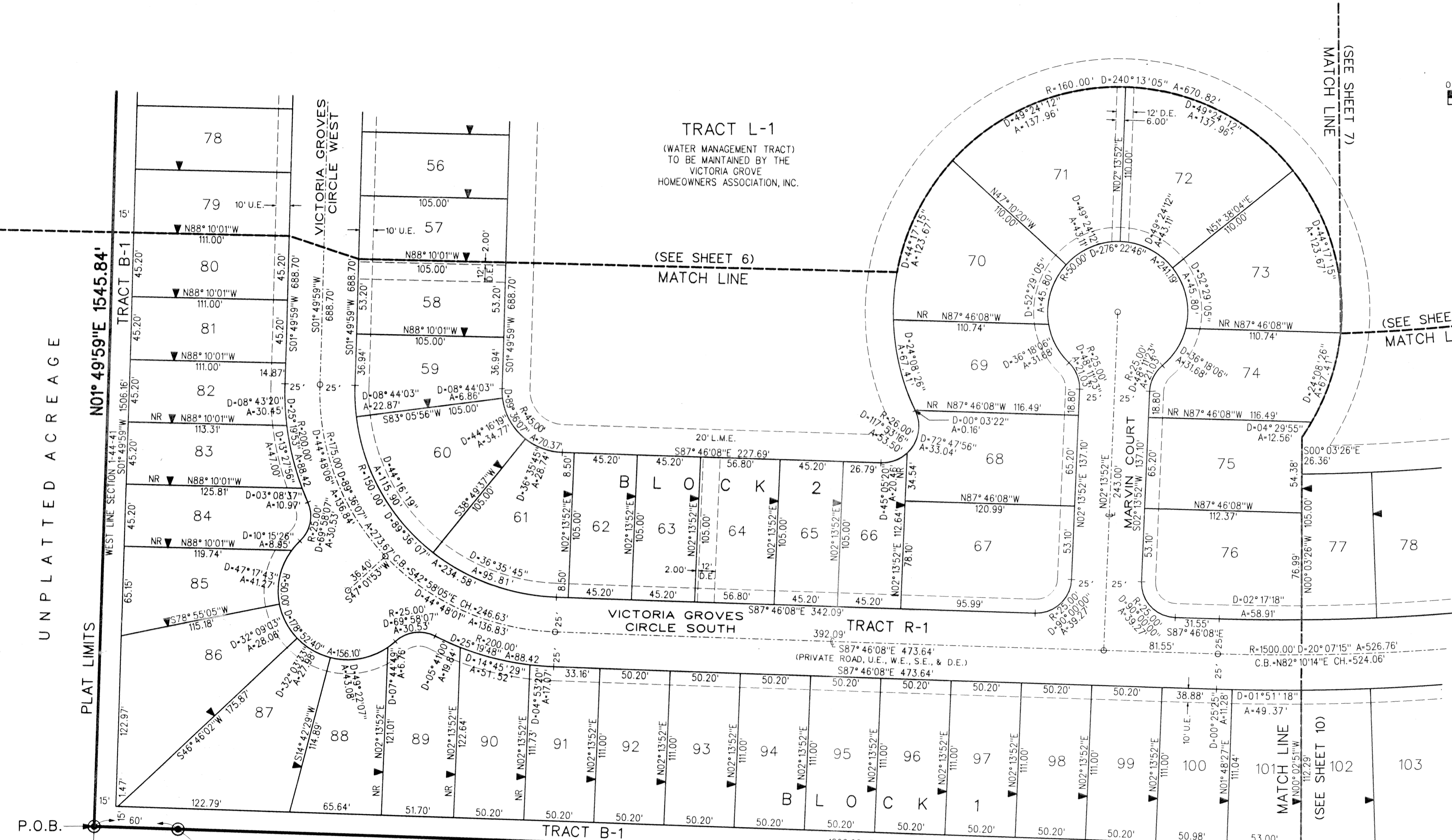
ANTHONY GROVES PHASE 2

A PORTION OF SECTION 1, TOWNSHIP 44 SOUTH, RANGE 41 EAST,
VILLAGE OF ROYAL PALM BEACH, PALM BEACH COUNTY, FLORIDA



0 20' 40' 100'
10' 30' 50'
SCALE: 1"=40'

SHEET 9 OF 11



- LEGEND:**
- SET PERMANENT REFERENCE MONUMENT (P.R.M.) *LB2936 UNLESS OTHERWISE NOTED
 - PERMANENT CONTROL POINT (P.C.P.)
 - ▼ ZERO LOT SIDE
 - ▲ CENTERLINE
 - ARC LENGTH
 - CHORD
 - CHORD BEARING
 - DELTA (CENTRAL ANGLE)
 - D.E. DRAINAGE EASEMENT
 - L.A.E. LIMITED ACCESS EASEMENT
 - L.M.A.E. LAKE MAINTENANCE ACCESS EASEMENT
 - L.M.E. LAKE MAINTENANCE EASEMENT
 - L.S.E. LIFT STATION EASEMENT
 - L.W.D.D. LAKE WORTH DRAINAGE DISTRICT
 - N.R. NON-RADIAL
 - O.R.B. OFFICIAL RECORDS BOOK
 - PG. PAGE
 - P.B. PLAT BOOK
 - P.B.C.R. PALM BEACH COUNTY RECORDS
 - P.O.B. POINT OF BEGINNING
 - P.O.C. POINT OF COMMENCEMENT
 - P.U.D. PLANNED UNIT DEVELOPMENT
 - R. RADIUS
 - R/W RIGHT-OF-WAY
 - SE SEWER EASEMENT
 - SF SQUARE FEET
 - U.E. UTILITY EASEMENT

UNPLATTED ACREAGE

P.O.B.

N01°49'59"E 628.25'

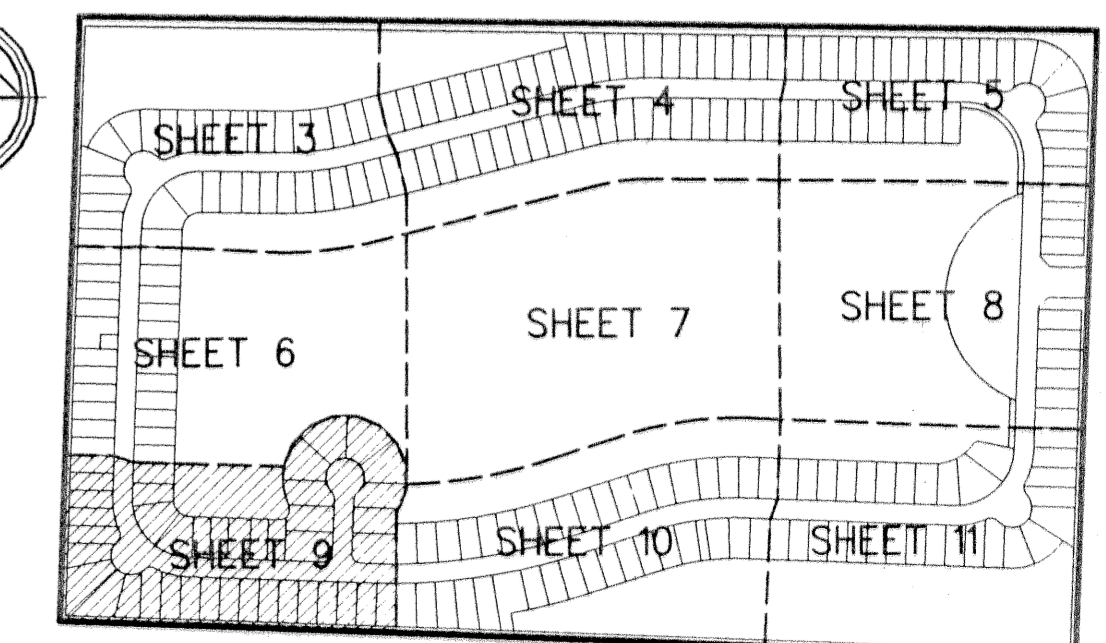
P.O.C. SOUTHWEST CORNER SECTION 1-44-41

SET BRASS DISK *LB2936 IN 4"x4" CONC. MONUMENT 60.00' O/S EAST

WARRANTY DEED TO DAVID J. LEE AND JEFFREY C. LEE (O.R.B. 7781, PG. 104)

UNPLATTED ACREAGE

N87°46'08"W 2607.01' PLAT LIMITS



KEY MAP N.T.S.