

CARNAHAN · PROCTOR · CROSS, INC.

CONSULTING ENGINEERS · SURVEYORS · PLANNERS

6101 WEST ATLANTIC BOULEVARD, MARGATE, FLORIDA 33063
PHONE: 954-972-3959 FAX: 954-972-4178

AUGUST 2002

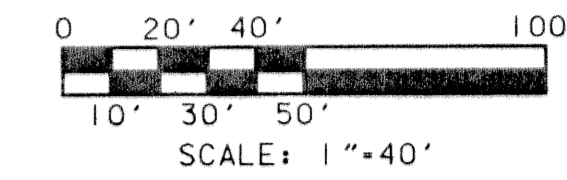
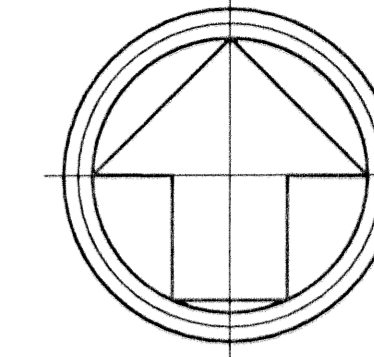
991010

JJM

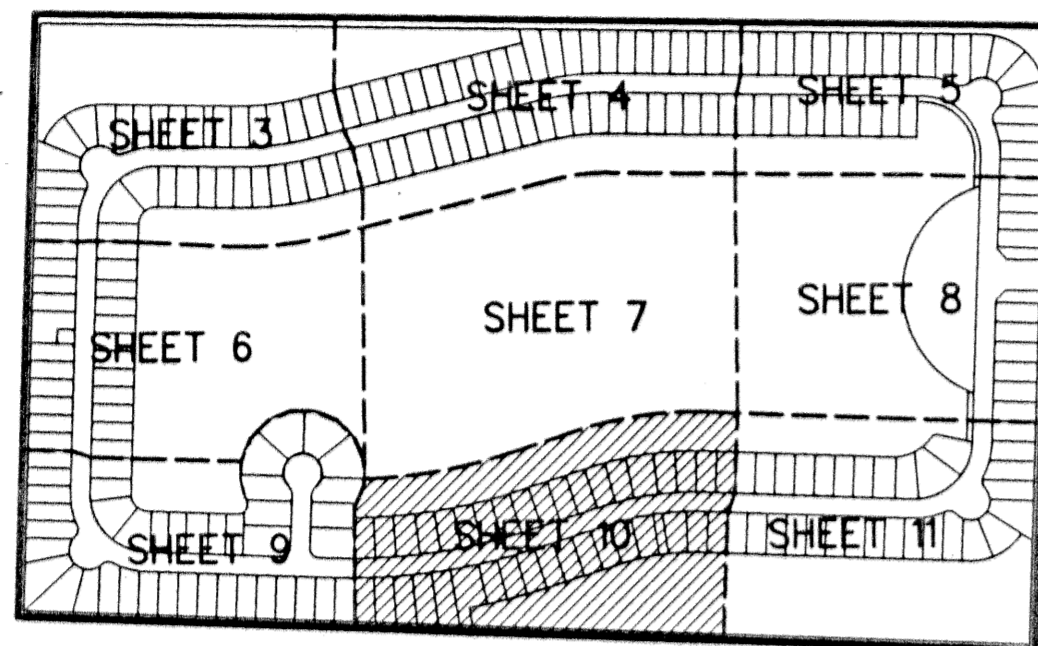
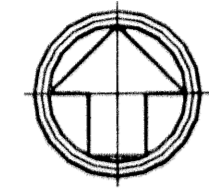
ANTHONY GROVES P.U.D.

ANTHONY GROVES PHASE 2

A PORTION OF SECTION 1, TOWNSHIP 44 SOUTH, RANGE 41 EAST,
VILLAGE OF ROYAL PALM BEACH, PALM BEACH COUNTY, FLORIDA



(SEE SHEET 6)
MATCH LINE



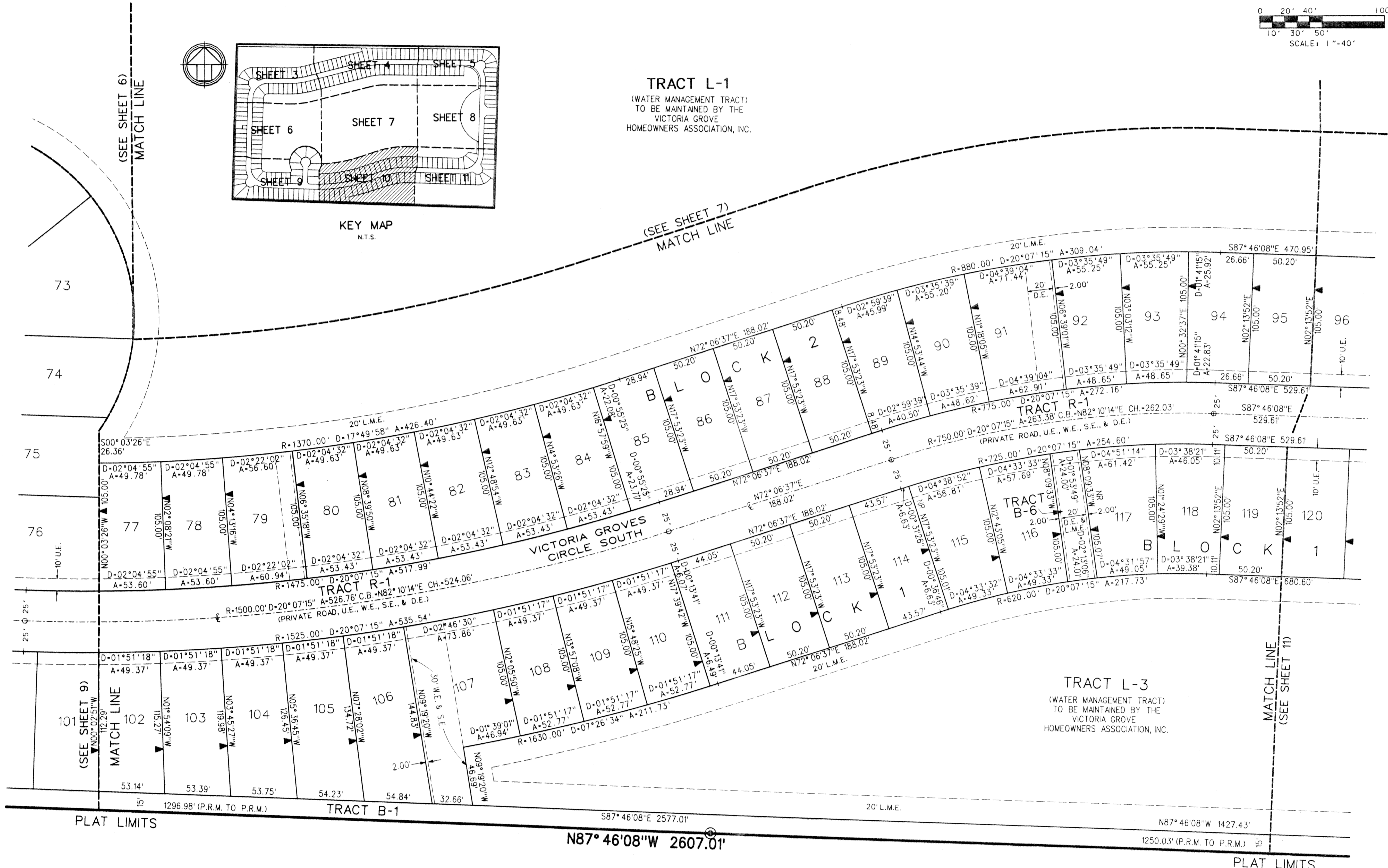
KEY MAP
N.T.S.

TRACT L-1
(WATER MANAGEMENT TRACT)
TO BE MAINTAINED BY THE
VICTORIA GROVE
HOMEOWNERS ASSOCIATION, INC.

(SEE SHEET 7)
MATCH LINE

LEGEND:

- SET PERMANENT REFERENCE MONUMENT (P.R.M.) *LB2936 UNLESS OTHERWISE NOTED
- PERMANENT CONTROL POINT (P.C.P.)
- ZERO LOT SIDE
- ▲ CENTERLINE
- ▲ ARC LENGTH
- ▲ CHORD
- ▲ CHORD BEARING
- ▲ DELTA (CENTRAL ANGLE)
- ▲ DRAINAGE EASEMENT
- ▲ LIMITED ACCESS EASEMENT
- ▲ LAKE MAINTENANCE ACCESS EASEMENT
- ▲ LAKE MAINTENANCE EASEMENT
- ▲ LIFT STATION EASEMENT
- ▲ LAKE WORTH DRAINAGE DISTRICT
- ▲ NON-RADIAL
- ▲ OFFICIAL RECORDS BOOK
- ▲ PAGE
- ▲ PLAT BOOK
- ▲ PALM BEACH COUNTY RECORDS
- ▲ POINT OF BEGINNING
- ▲ POINT OF COMMENCEMENT
- ▲ PLANNED UNIT DEVELOPMENT
- ▲ RADIUS
- ▲ RIGHT-OF-WAY
- ▲ SEWER EASEMENT
- ▲ SQUARE FEET
- ▲ UTILITY EASEMENT
- ▲ WATER EASEMENT



PLAT LIMITS

PLAT LIMITS

WARRANTY DEED TO DAVID J. LEE AND JEFFREY C. LEE
(O.R.B. 7781, PG. 104)

UNPLATTED ACREAGE

FILE: F:\881010\cadd\10\cr7pp10.dgn
DATE: 10-Sep-02 11:57