

CARNAHAN · PROCTOR · CROSS, INC.

CONSULTING ENGINEERS · SURVEYORS · PLANNERS

6101 WEST ATLANTIC BOULEVARD, MARGATE, FLORIDA 33063
PHONE: 954-972-3959 FAX: 954-972-4178

AUGUST 2002

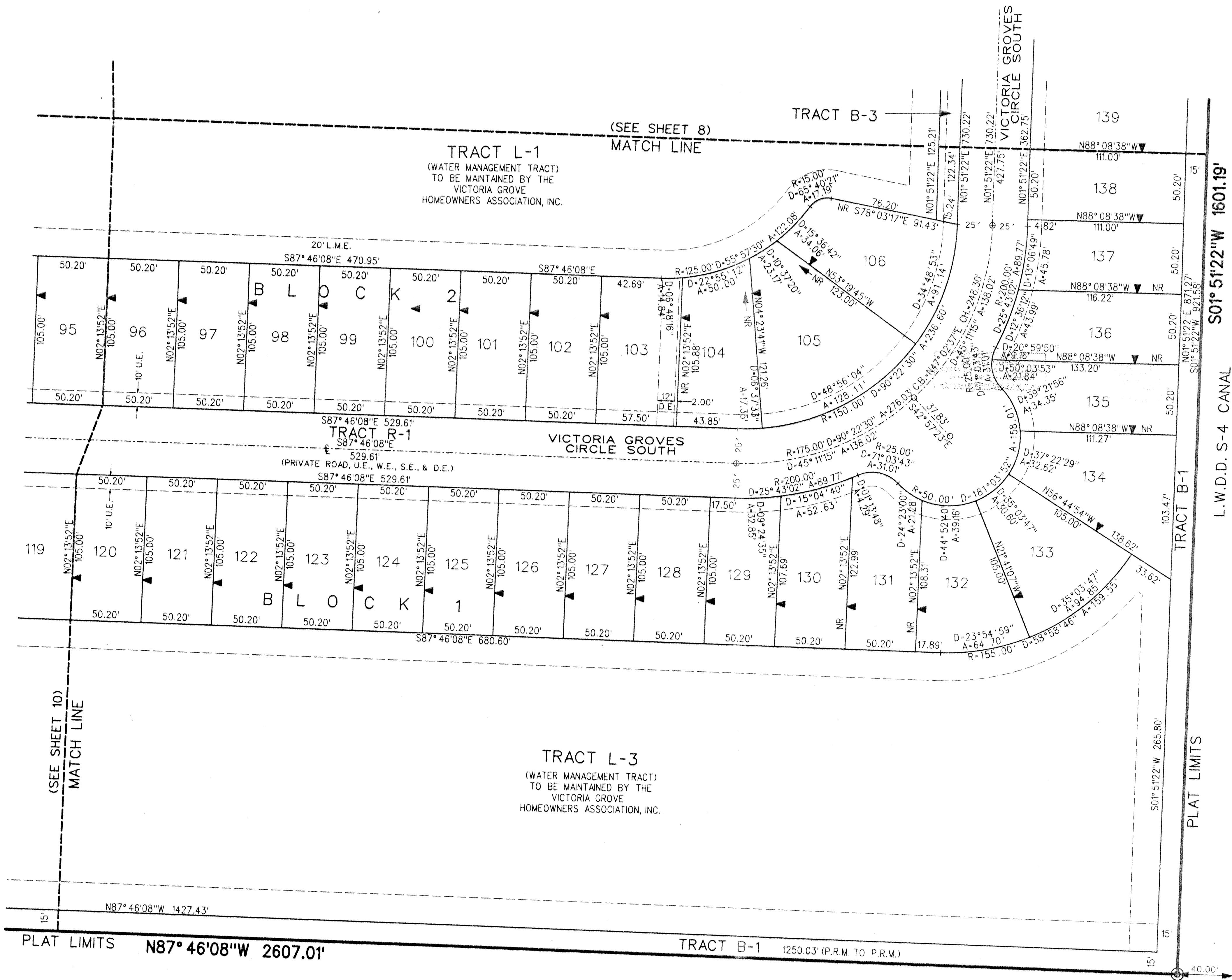
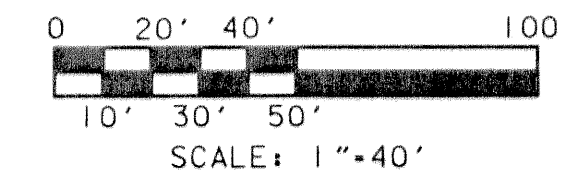
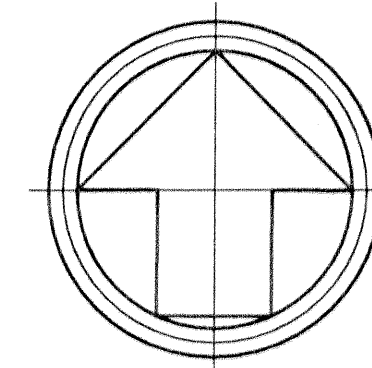
991010

JJM

ANTHONY GROVES P.U.D.

ANTHONY GROVES PHASE 2

A PORTION OF SECTION 1, TOWNSHIP 44 SOUTH, RANGE 41 EAST,
VILLAGE OF ROYAL PALM BEACH, PALM BEACH COUNTY, FLORIDA



LEGEND:

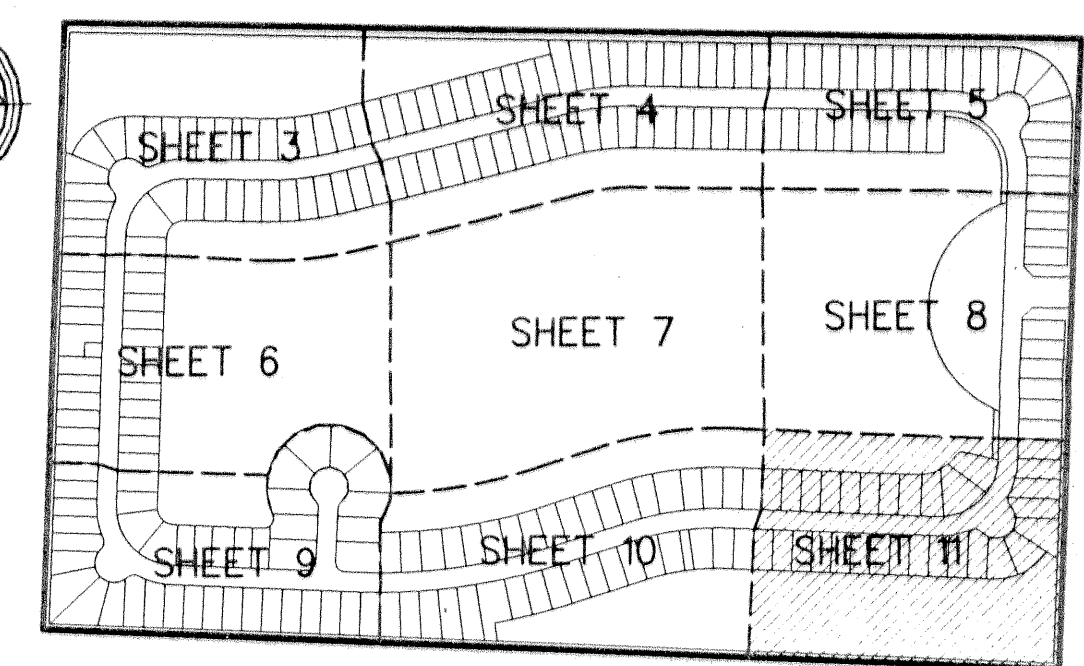
- SET PERMANENT REFERENCE MONUMENT (P.R.M.) • LB2936 UNLESS OTHERWISE NOTED
- PERMANENT CONTROL POINT (P.C.P.)
- ▼ ZERO LOT SIDE
- CENTERLINE
- ARC LENGTH
- CHORD
- C.B. CHORD BEARING
- ∠ DELTA (CENTRAL ANGLE)
- D.E. DRAINAGE EASEMENT
- L.A.E. LIMITED ACCESS EASEMENT
- L.M.A.E. LAKE MAINTENANCE ACCESS EASEMENT
- L.M.E. LAKE MAINTENANCE EASEMENT
- L.S.E. LIFT STATION EASEMENT
- L.W.D.D. LAKE WORTH DRAINAGE DISTRICT
- N.R. NON-RADIAL
- O.R.B. OFFICIAL RECORDS BOOK
- PG. PAGE
- P.B. PLAT BOOK
- P.B.C.R. PALM BEACH COUNTY RECORDS
- P.O.B. POINT OF BEGINNING
- P.O.C. POINT OF COMMENCEMENT
- P.U.D. PLANNED UNIT DEVELOPMENT
- R. RADIUS
- R/W. RIGHT-OF-WAY
- SE. SEWER EASEMENT
- SF. SQUARE FEET
- U.E. UTILITY EASEMENT

ANTHONY GROVES PHASE 1
(P.B. 93, PGS. 40-52, P.B.C.R.)

L.W.D.D. S-4 CANAL
80.00' L.W.D.D. CANAL RIGHT-OF-WAY.
(O.R.B. 937, PG. 3779)
(O.R.B. 937, PG. 3779)
(O.R.B. 937, PG. 382)

QUIT CLAIM DEED TO L.W.D.D.
(O.R.B. 837, PG. 378)

WEST LINE EAST ONE-HALF SECTION 1-44-41



KEY MAP
N.T.S.

FILE: C:\NRI\10\ncsd\1\at2ppi1.dgn
DATE: 10-Sep-02 12:10