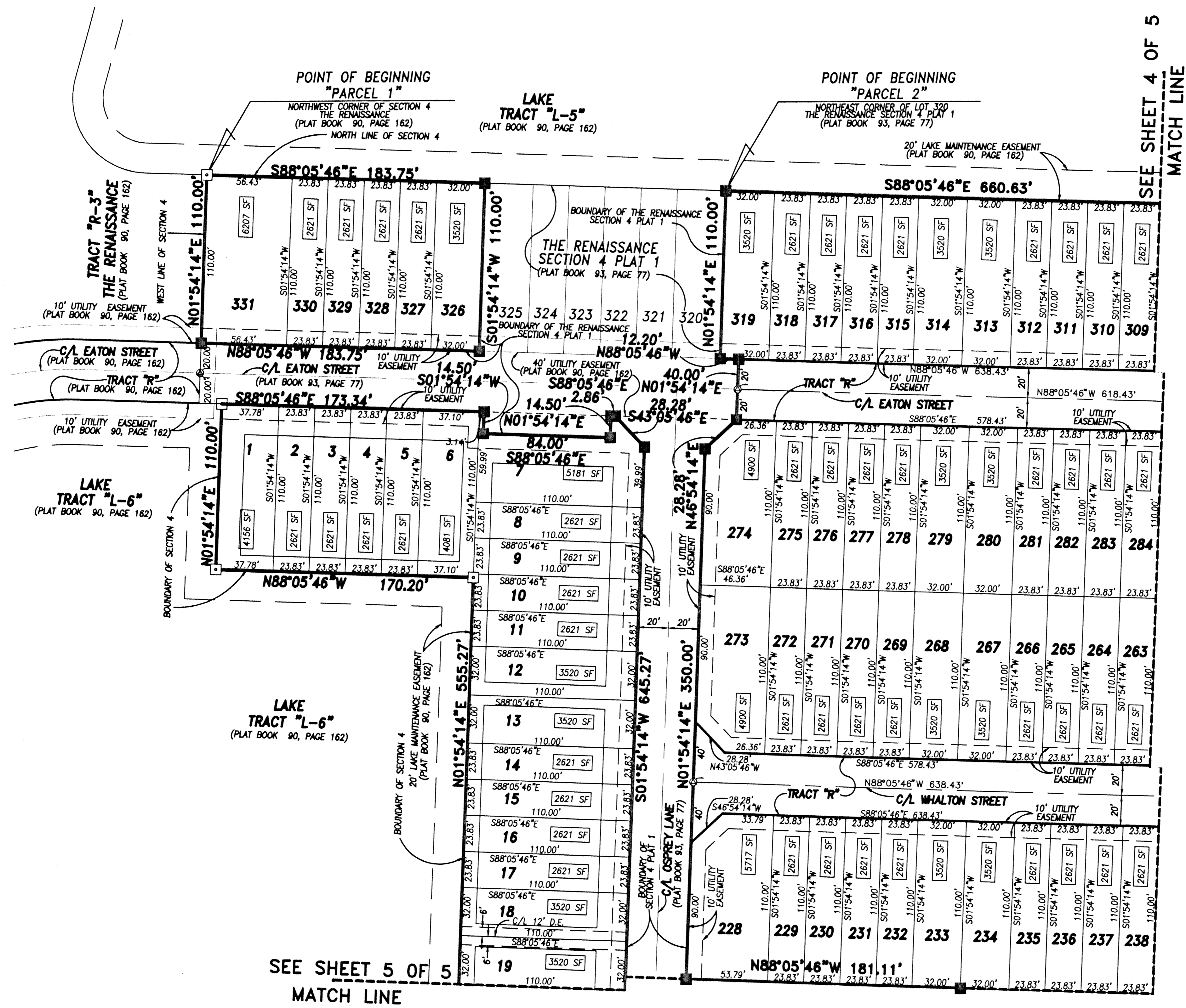
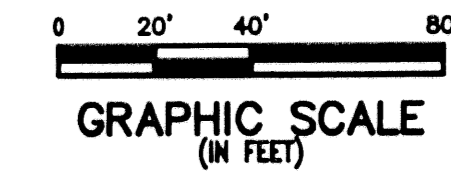
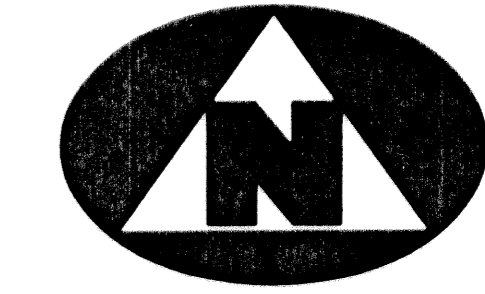


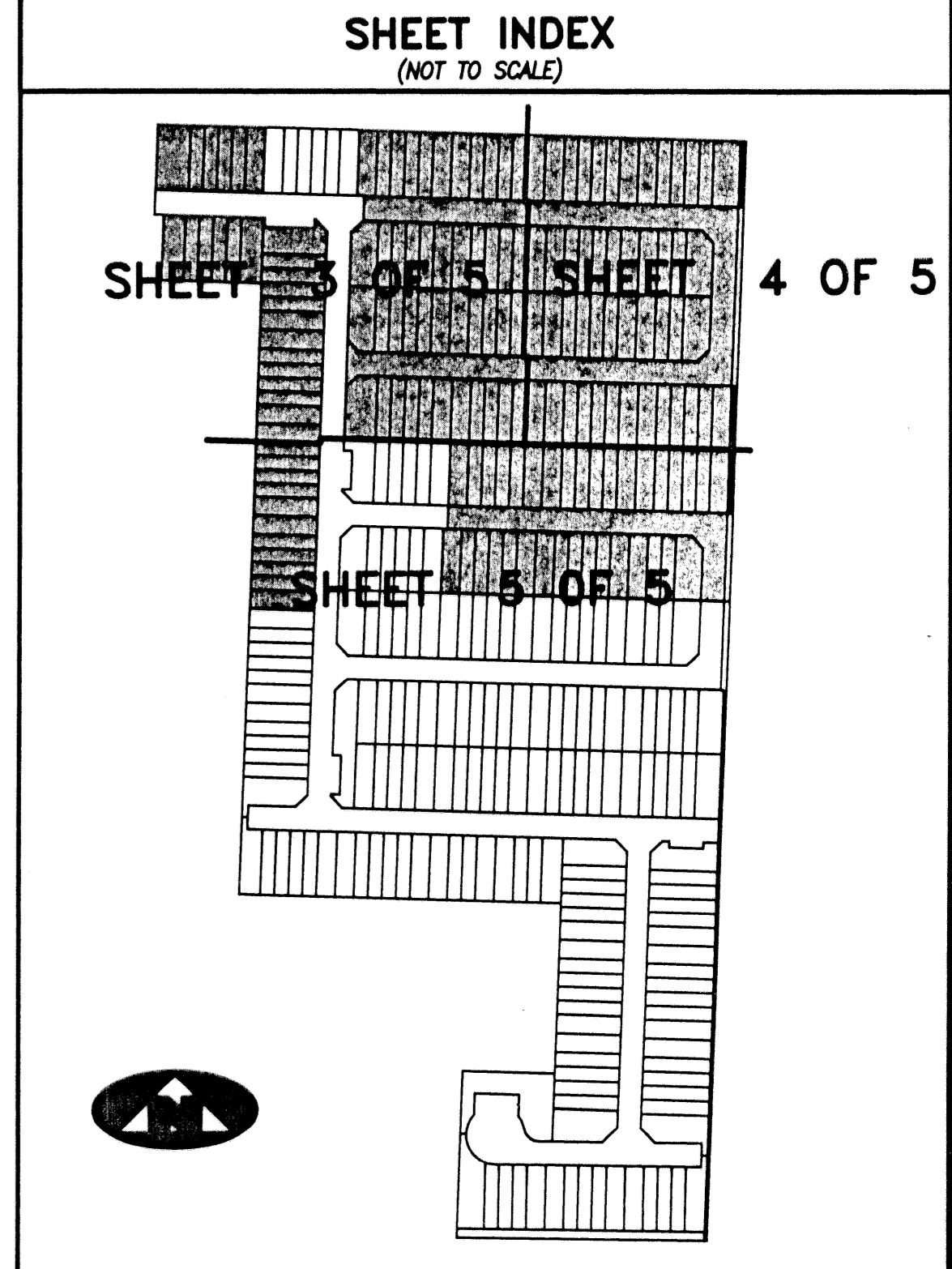
# THE RENAISSANCE SECTION 4 PLAT 2

(A PART OF HAMILTON BAY/ THE RENAISSANCE RESIDENTIAL PLANNED UNIT DEVELOPMENT)  
BEING A REPLAT OF PORTIONS OF SECTION 4, THE RENAISSANCE, RECORDED IN PLAT BOOK 90, PAGE 162, PUBLIC RECORDS, AND LYING IN SECTION 15, TOWNSHIP 43 SOUTH, RANGE 42 EAST, CITY OF WEST PALM BEACH, PALM BEACH COUNTY, FLORIDA



SEE SHEET 4 OF 5  
MATCH LINE

SEE SHEET 5 OF 5  
MATCH LINE



### LEGEND:

- C/L DENOTES A CENTERLINE
- ORB DENOTES OFFICIAL RECORDS BOOK
- PG DENOTES PAGE NUMBER
- PCP DENOTES PERMANENT CONTROL POINT
- PRM DENOTES PERMANENT REFERENCE MONUMENT
- DENOTES A SET PERMANENT REFERENCE MONUMENT (L.S. NO. 2424)
- ⊙ DENOTES A SET PERMANENT CONTROL POINT (L.S. NO. 2424)
- DENOTES A FOUND PERMANENT REFERENCE MONUMENT (L.S. NO. 2424)
- DENOTES A FOUND PERMANENT CONTROL POINT (L.S. NO. 2424)

THIS INSTRUMENT WAS PREPARED BY WM. R. VAN CAMPEN, R.L.S., IN AND FOR THE OFFICES OF BENCH MARK LAND SURVEYING & MAPPING, INC., 4152 WEST BLUE HERON BOULEVARD, SUITE 121, RIVIERA BEACH, FLORIDA

**BENCH MARK LAND SURVEYING & MAPPING, INC.**  
 4152 W. BLUE HERON BOULEVARD • SUITE 121  
 RIVIERA BEACH • FLORIDA 33404  
 PHONE: (561) 848-2102 • L.B. 2171 • FAX: (561) 844-9659  
 EMAIL: bmlsm@aol.com WEB: http://members.aol.com/bmlsm

RECORD PLAT				
THE RENAISSANCE SECTION 4 PLAT 2				
DWN	KVC	FB	DATE	WO.#
CKD			FILE S4PLAT2S050.DWG	P22054
SCALE			1"=40'	SHEET 3 OF 5