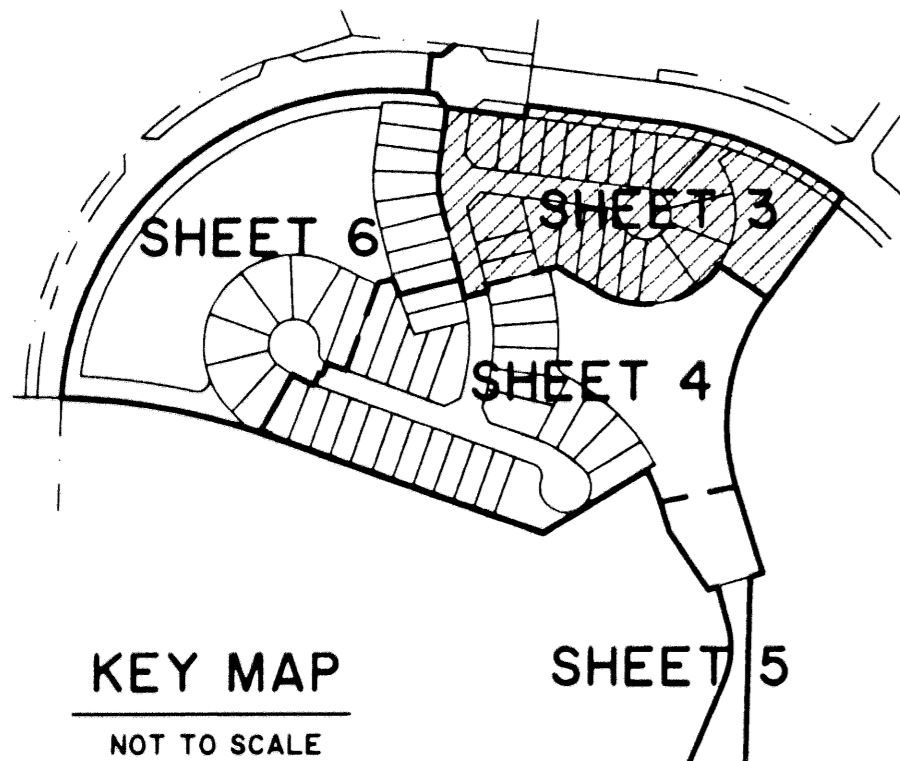


BAYWINDS R.P.D. PLAT NO. 10

BEING A PORTION OF SECTION 19, TOWNSHIP 43 SOUTH, RANGE 42 EAST, AND THE REPLAT OF TRACT "O-4", BAYWINDS R.P.D. PLAT NO. 6 AS RECORDED IN PLAT BOOK 9I, PAGES 49 AND 50, PUBLIC RECORDS OF PALM BEACH COUNTY, FLORIDA, ALL LYING IN SECTION 19, TOWNSHIP 43 SOUTH, RANGE 42 EAST, CITY OF WEST PALM BEACH, PALM BEACH COUNTY, FLORIDA.
SHEET 3 OF 6

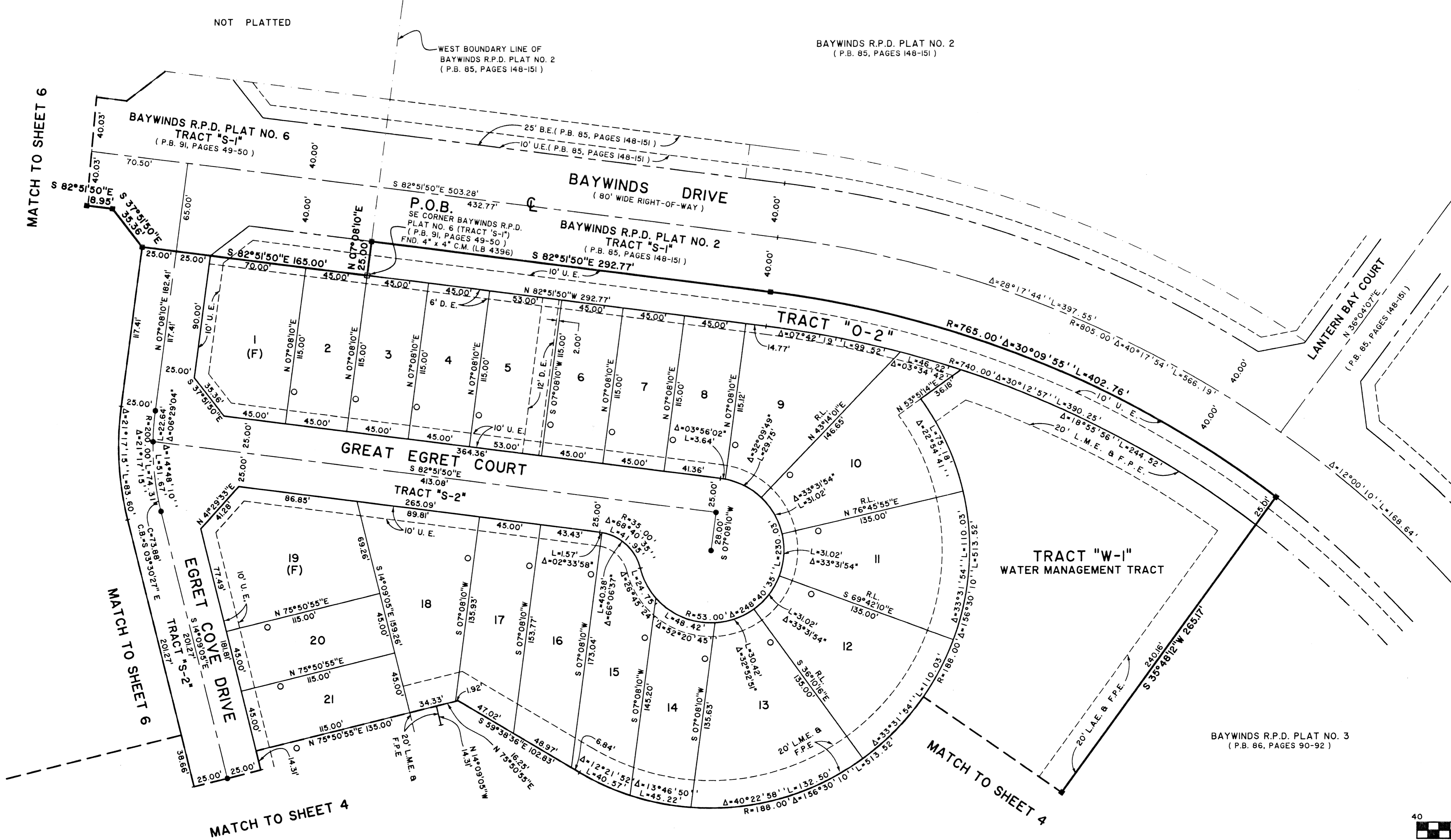
STATE OF FLORIDA SS
COUNTY OF PALM BEACH
THIS PLAT WAS FILED FOR RECORD AT _____
____ M., THIS _____ DAY OF _____ 2003
AND DULY RECORDED IN PLAT BOOK NO. _____
ON PAGE _____
DOROTHY H. WILKEN,
CLERK OF THE CIRCUIT COURT
BY _____ D.C.



KEY MAP
NOT TO SCALE

SHEET 5

NOT PLATTED

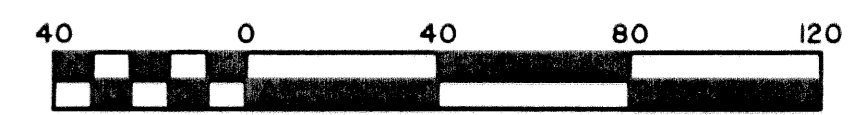


MATCH TO SHEET 6

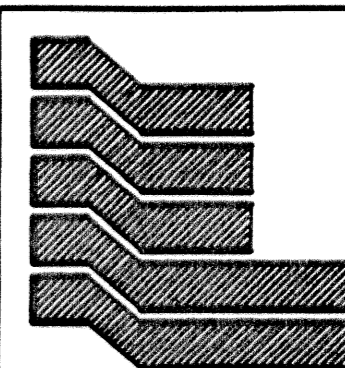
MATCH TO SHEET 6

MATCH TO SHEET 4

MATCH TO SHEET 4



Scale 1" = 40'



Landmark Surveying & Mapping Inc.
1850 Forest Hill Boulevard
Ph. (561) 433-5405 Suite 100 W.P.B. Florida
LB # 4396

BAYWINDS R.P.D. PLAT NO. 10
(TRACT "J")