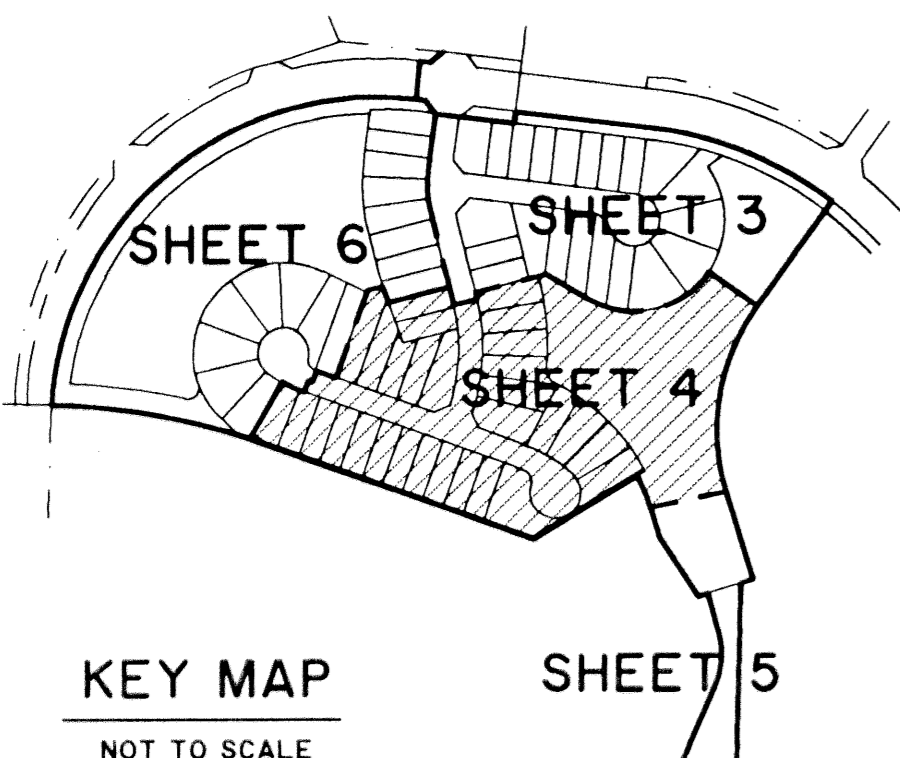


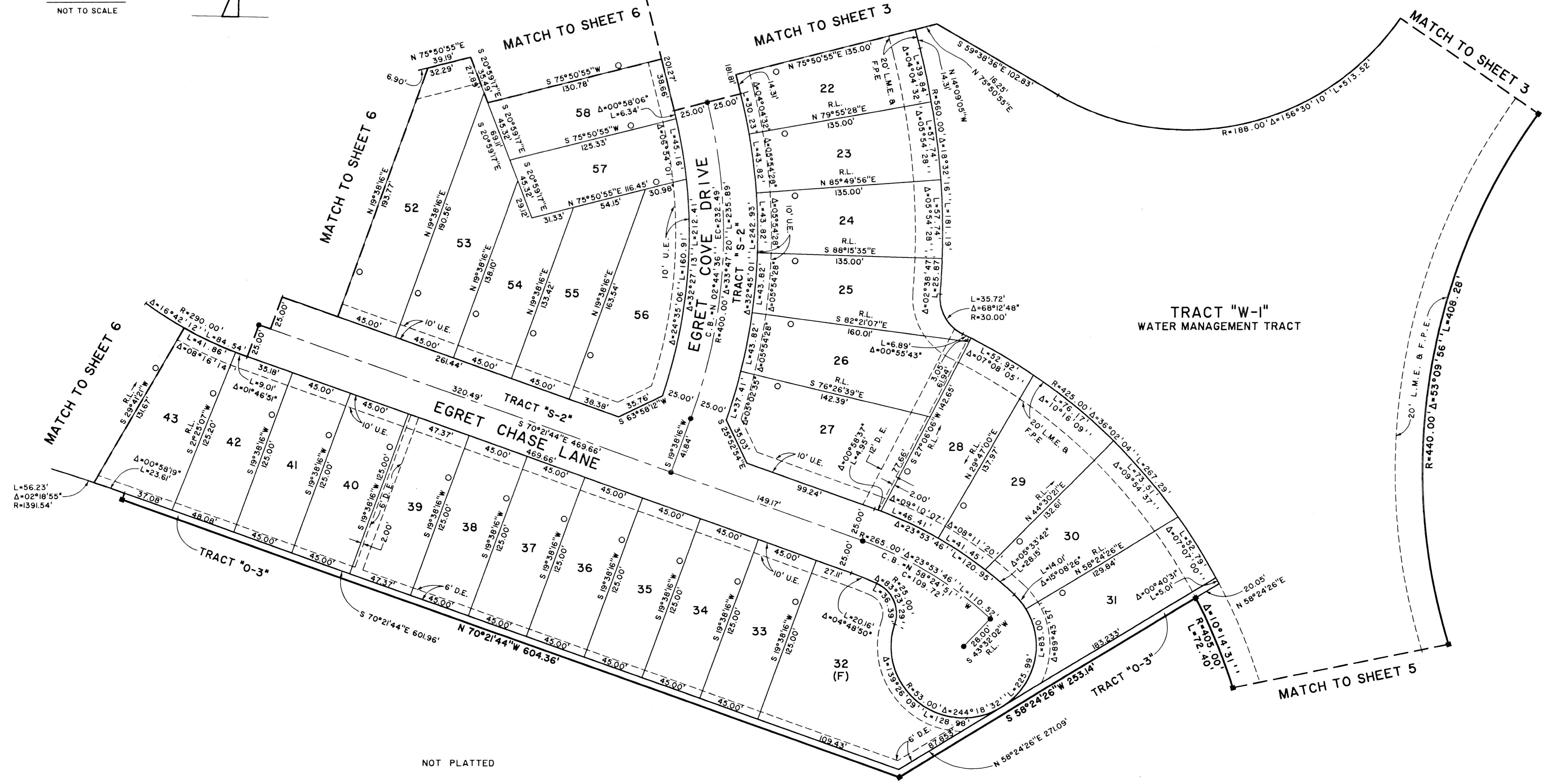
# BAYWINDS R.P.D. PLAT NO. 10

BEING A PORTION OF SECTION 19, TOWNSHIP 43 SOUTH, RANGE 42 EAST, AND THE REPLAT OF TRACT "O-4", BAYWINDS R.P.D. PLAT NO. 6 AS RECORDED IN PLAT BOOK 9I, PAGES 49 AND 50, PUBLIC RECORDS OF PALM BEACH COUNTY, FLORIDA, ALL LYING IN SECTION 19, TOWNSHIP 43 SOUTH, RANGE 42 EAST, CITY OF WEST PALM BEACH, PALM BEACH COUNTY, FLORIDA.  
SHEET 4 OF 6

STATE OF FLORIDA    SS  
COUNTY OF PALM BEACH  
THIS PLAT WAS FILED FOR RECORD AT \_\_\_\_\_  
M., THIS \_\_\_\_\_ DAY OF \_\_\_\_\_ 2003  
AND DULY RECORDED IN PLAT BOOK NO. \_\_\_\_\_  
ON PAGE \_\_\_\_\_  
DOROTHY H. WILKEN,  
CLERK OF THE CIRCUIT COURT  
BY \_\_\_\_\_ D.C.

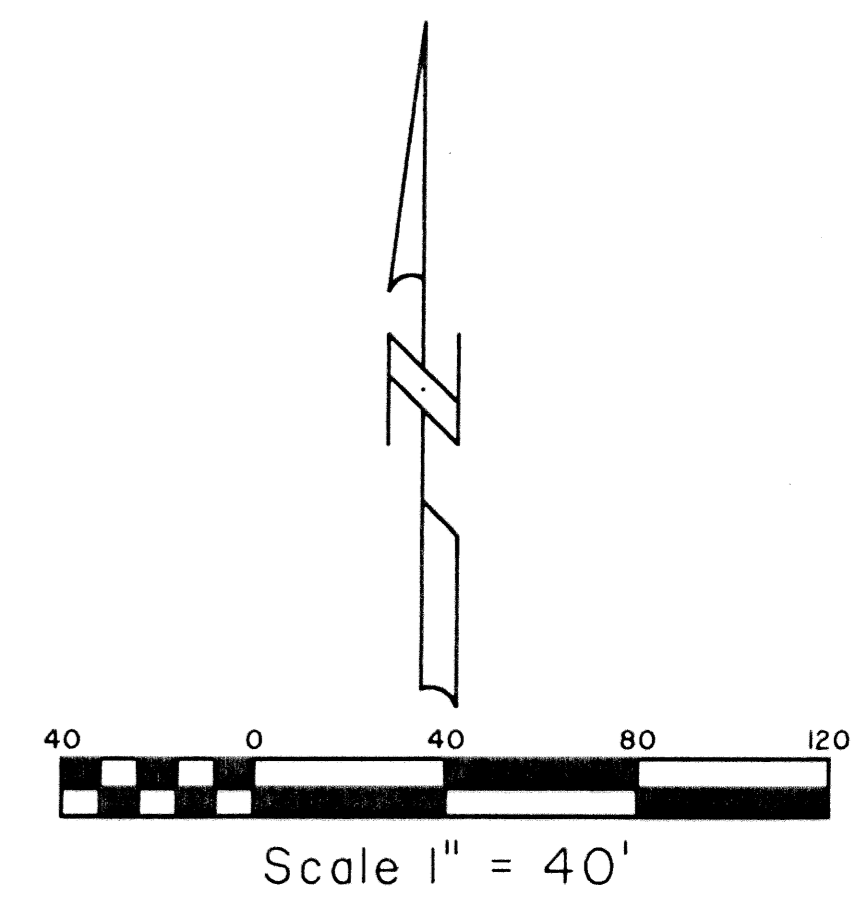


KEY MAP  
NOT TO SCALE

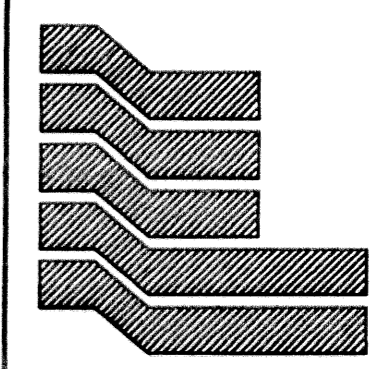


BAYWINDS R.P.D. PLAT NO. 3  
( P.B. 86, PAGES 90-92 )

NOT PLATTED



Scale 1" = 40'



Landmark Surveying & Mapping Inc.  
1850 Forest Hill Boulevard  
Ph. (561) 433-5405 Suite 100 W.P.B. Florida  
LB # 4396

**BAYWINDS R.P.D. PLAT NO. 10**  
( TRACT "J" )