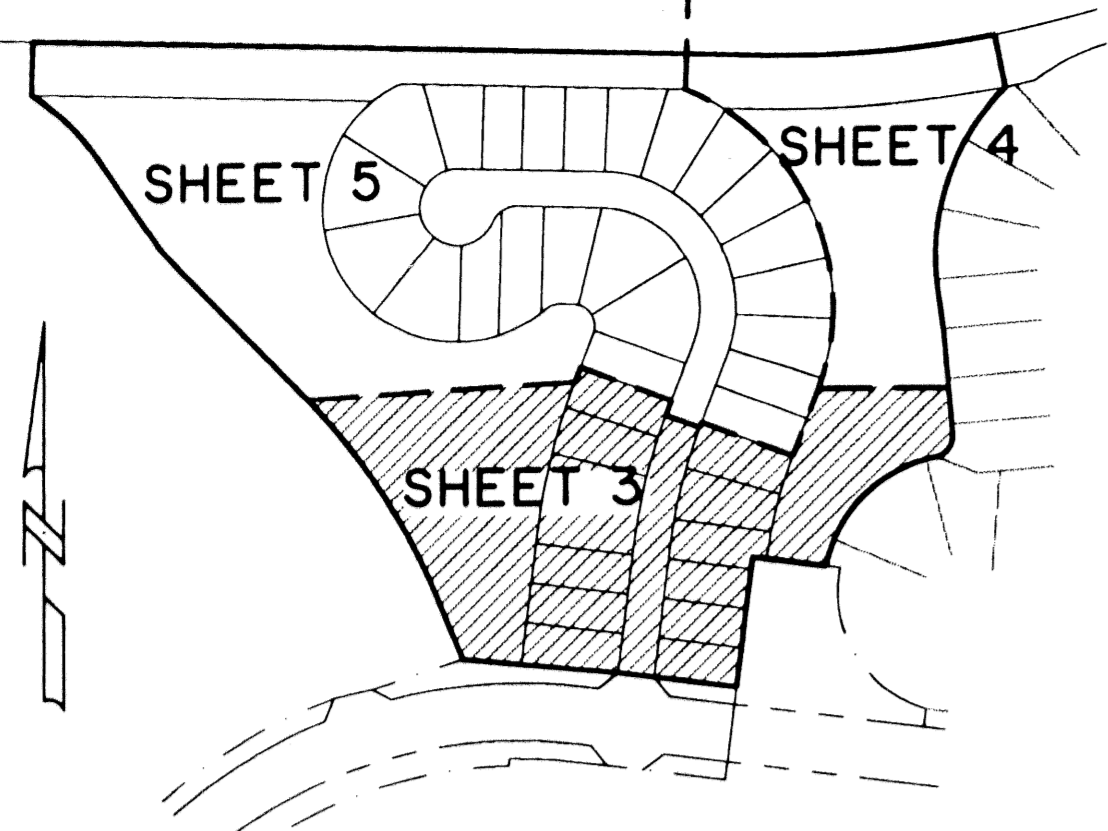


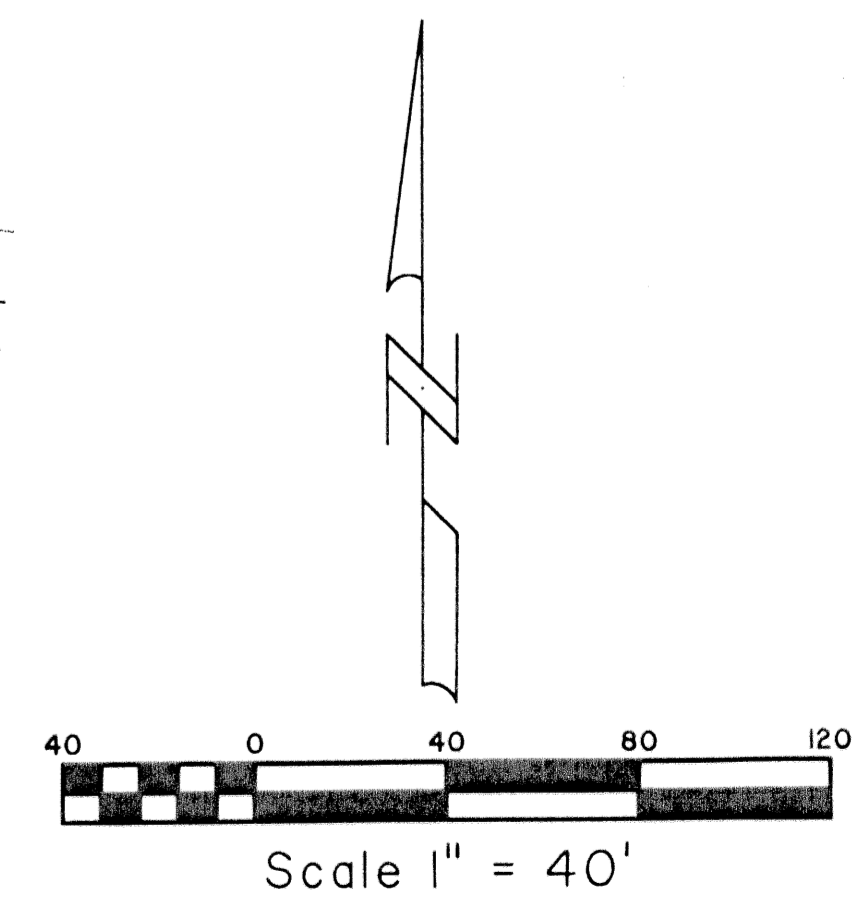
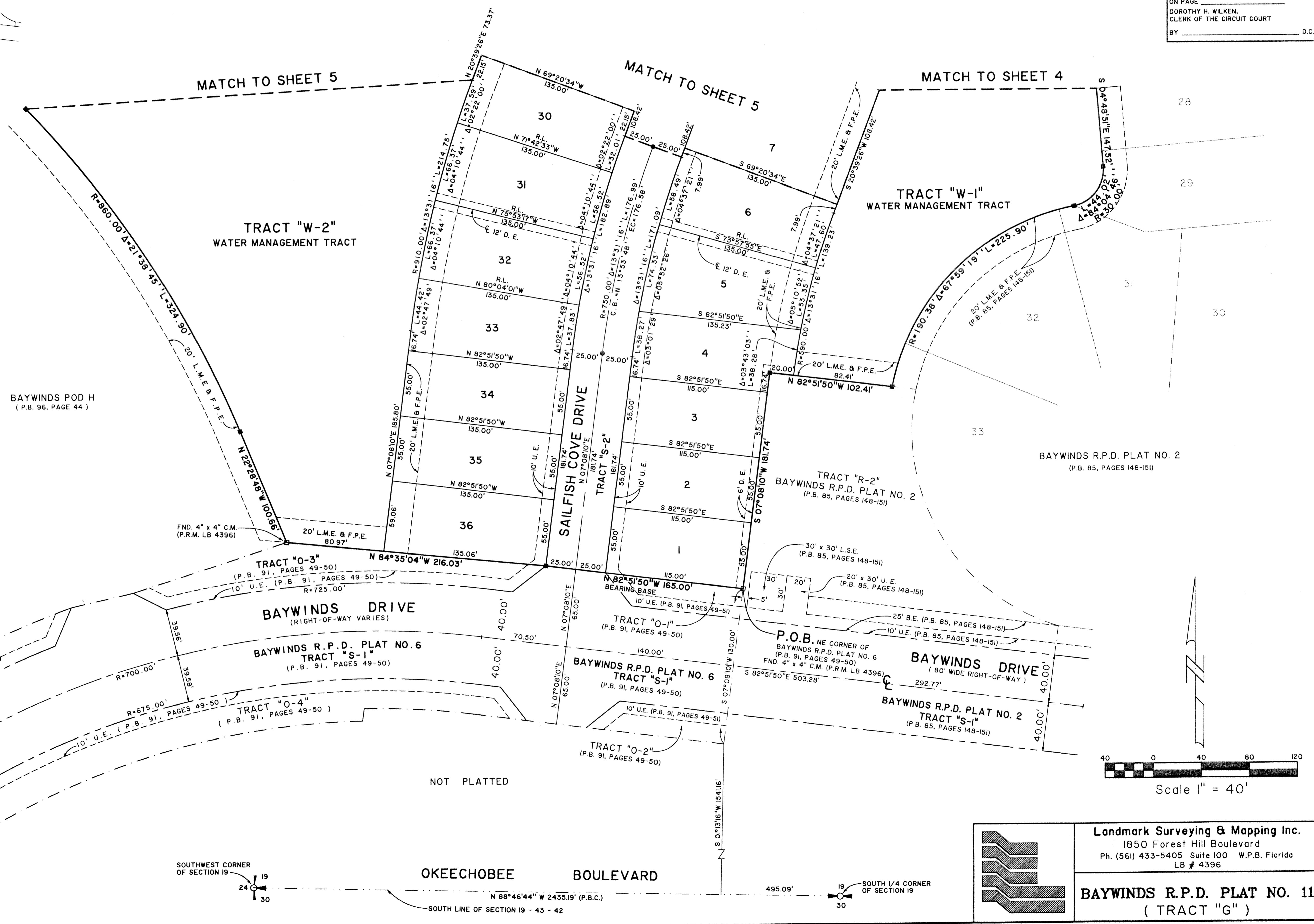
# BAYWINDS R.P.D. PLAT NO. 11

LYING IN SECTION 19, TOWNSHIP 43 SOUTH, RANGE 42 EAST,  
CITY OF WEST PALM BEACH, PALM BEACH COUNTY, FLORIDA.  
SHEET 3 OF 5



KEY MAP  
NOT TO SCALE

STATE OF FLORIDA    SS  
COUNTY OF PALM BEACH  
THIS PLAT WAS FILED FOR RECORD AT \_\_\_\_\_  
M. THIS DAY OF \_\_\_\_\_ 2003  
AND DULY RECORDED IN PLAT BOOK NO. \_\_\_\_\_  
ON PAGE \_\_\_\_\_  
DOROTHY H. WILKEN,  
CLERK OF THE CIRCUIT COURT  
BY \_\_\_\_\_ D.C.



**Landmark Surveying & Mapping Inc.**  
1850 Forest Hill Boulevard  
Ph. (561) 433-5405 Suite 100 W.P.B. Florida  
LB # 4396

---

**BAYWINDS R.P.D. PLAT NO. 11**  
(TRACT "G")

C:\EPN\13\UDS\2464\2464SH12 Thu Jan 02 11:34:13 2003 PLOTTED BY L. C. B13P011