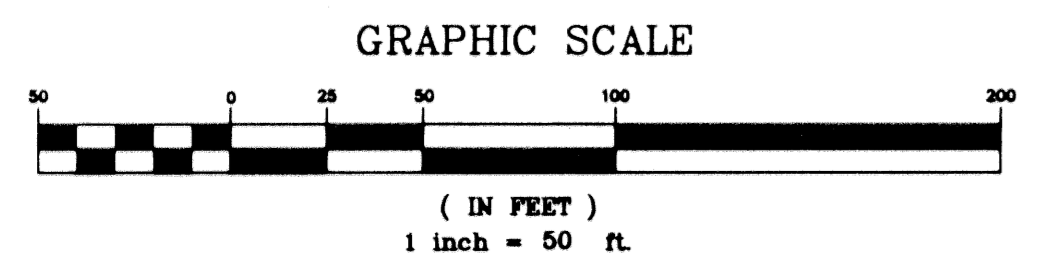
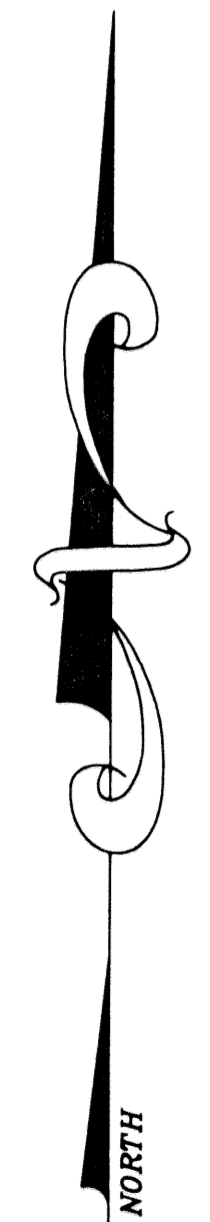
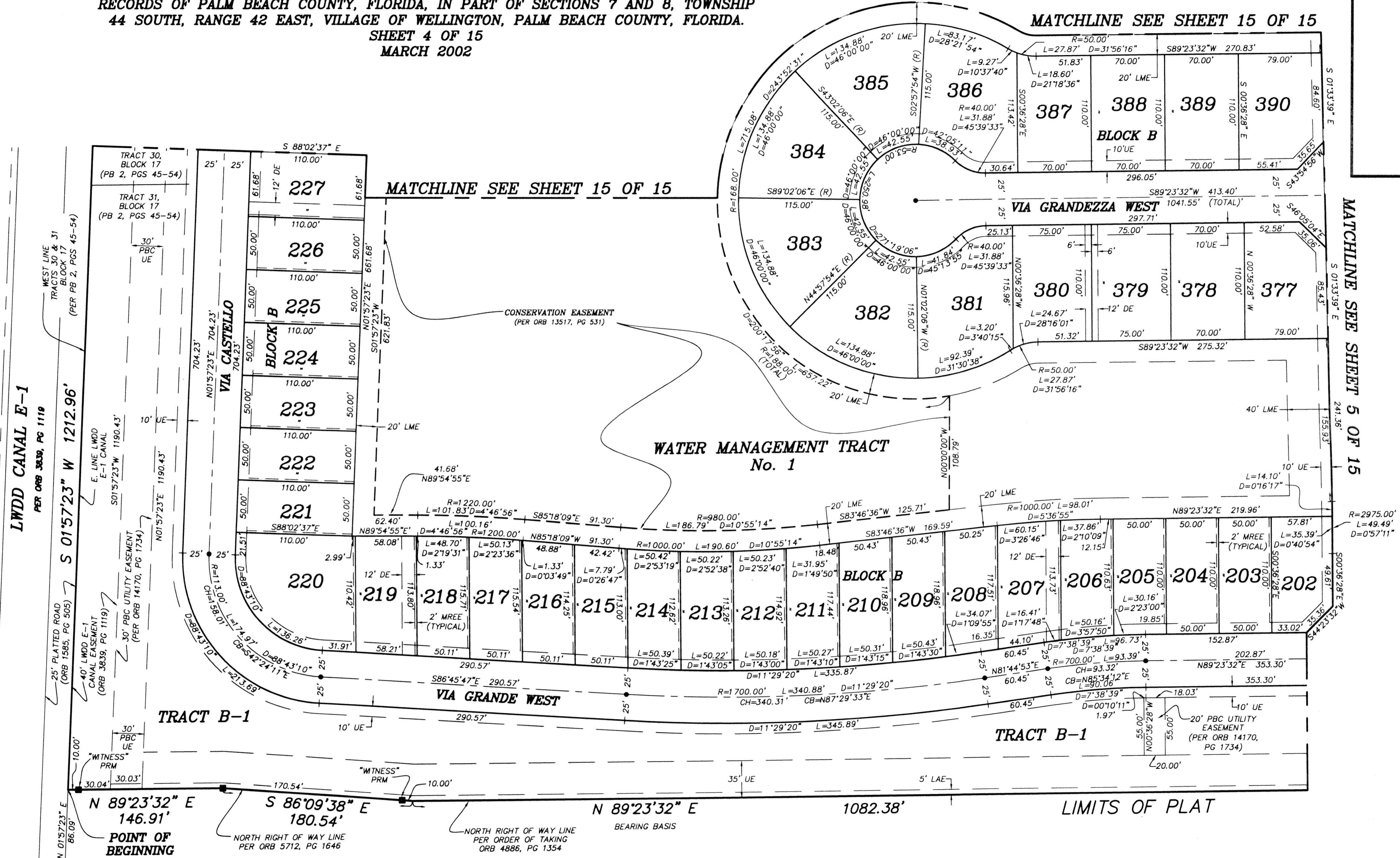
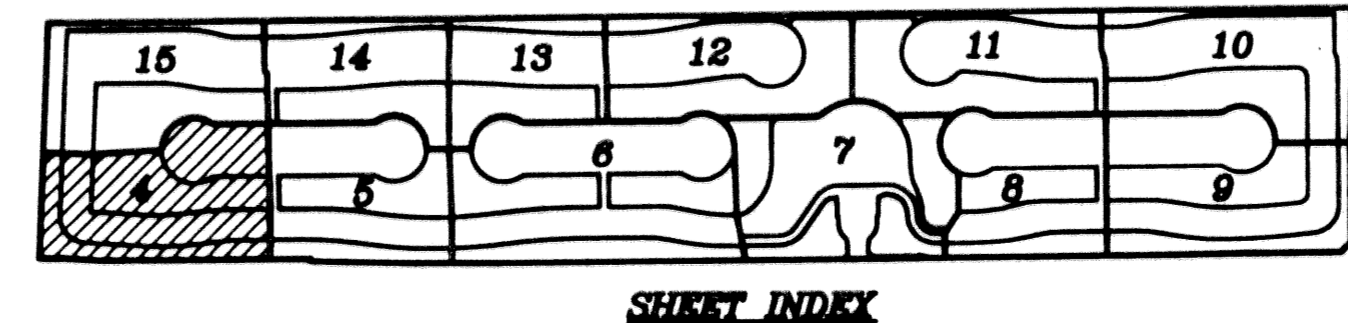


BUENA VIDA
 BEING A REPLAT OF A PORTION OF BLOCKS 16 AND 17 OF PALM BEACH FARMS COMPANY
 PLAT No. 3, AS RECORDED IN PLAT BOOK 2, PAGES 45 THROUGH 54 OF THE PUBLIC
 RECORDS OF PALM BEACH COUNTY, FLORIDA, IN PART OF SECTIONS 7 AND 8, TOWNSHIP
 44 SOUTH, RANGE 42 EAST, VILLAGE OF WELLINGTON, PALM BEACH COUNTY, FLORIDA.
SHEET 4 OF 15
MARCH 2002



- POINT OF COMMENCEMENT**
 SOUTHWEST CORNER TRACT
 31, BLOCK 17, PALM BEACH
 FARMS COMPANY PLAT No. 3
 (PER PB 2, PGS 45-54)
- LEGEND:**
 D= DELTA (CENTRAL ANGLE)
 L= LENGTH
 R= RADIUS
 PB= PLAT BOOK
 O.R.B.= OFFICIAL RECORD BOOK
 PG= PAGE
 ■ = PERMANENT REFERENCE MONUMENT "LB 4318"
 (UNLESS OTHERWISE NOTED)
 ● = PERMANENT CONTROL POINT "LB 4318"
 (R)= RADIAL
 UE= UTILITY EASEMENT
 DE= DRAINAGE EASEMENT
 MREE= MAINTENANCE & ROOF EAVE EASEMENT
 LME= LAKE MAINTENANCE EASEMENT
 LAE= LIMITED ACCESS EASEMENT
 WMT= WATER MANAGEMENT TRACT
 PLS= PROFESSIONAL LAND SURVEYOR
 PSM= PROFESSIONAL SURVEYOR & MAPPER
 LB= LICENSED SURVEYING & MAPPING BUSINESS
 CH= CHORD DISTANCE
 CB= CHORD BEARING
 LWDD= LAKE WORTH DRAINAGE DISTRICT
 PBC= PALM BEACH COUNTY
 PDE= PUBLIC DRAINAGE EASEMENT



BUENA VIDA	
NICK MILLER, INC. Surveying & Mapping Consultants	
SHEET NO. 4	SCALE: 1" = 50' DATE: MARCH 200 JOB NO. 1008.009 FILE: 1008.09