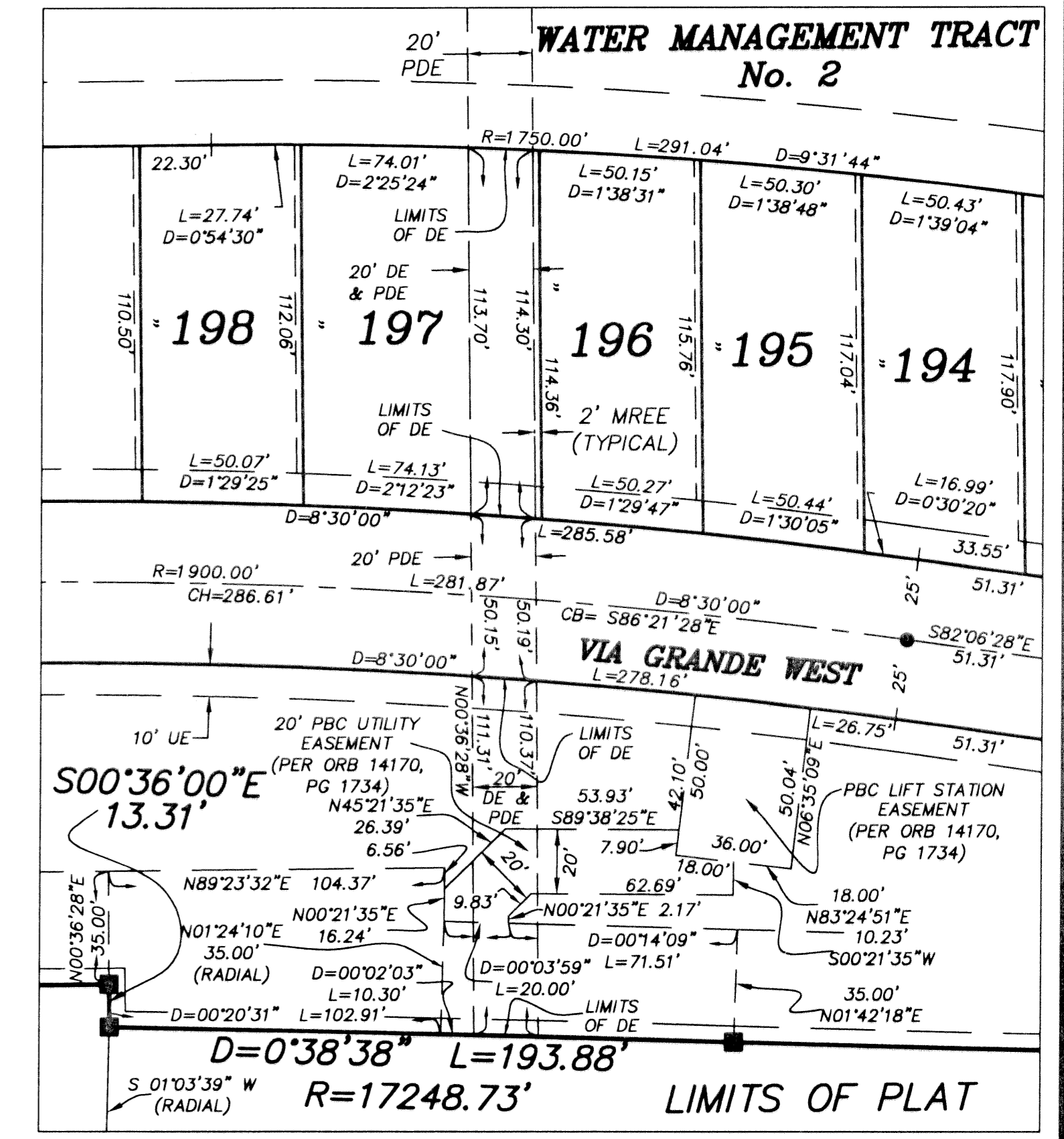
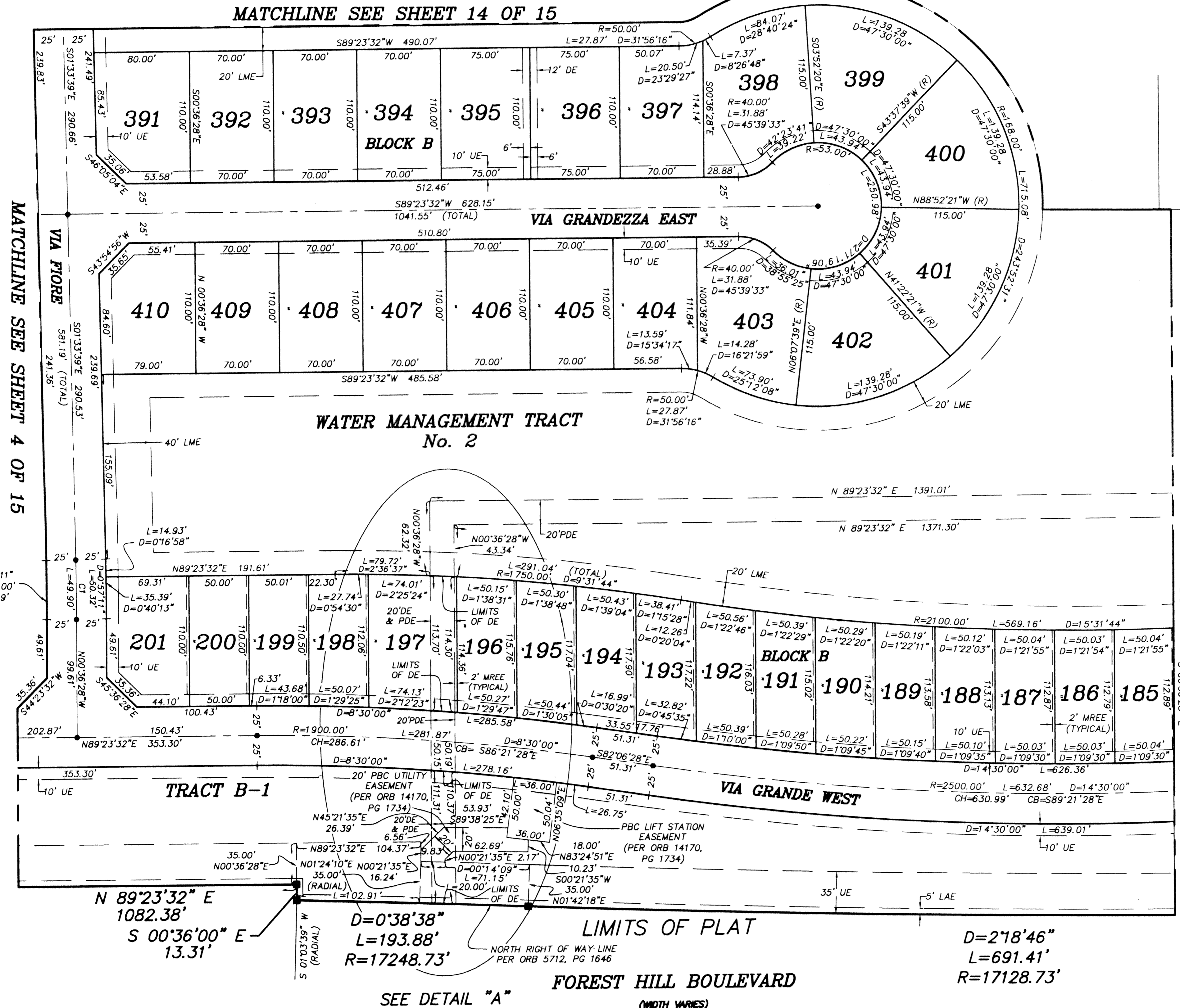
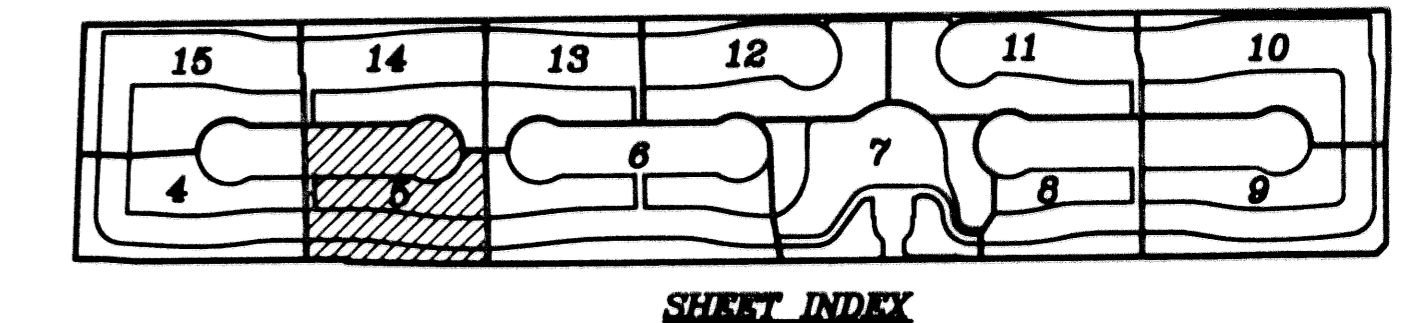


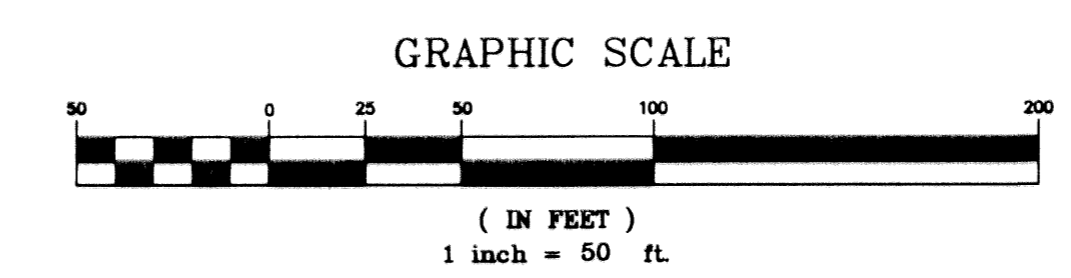
BUENA VIDA
 BEING A REPLAT OF A PORTION OF BLOCKS 16 AND 17 OF PALM BEACH FARMS COMPANY
 PLAT No. 3, AS RECORDED IN PLAT BOOK 2, PAGES 45 THROUGH 54 OF THE PUBLIC
 RECORDS OF PALM BEACH COUNTY, FLORIDA, IN PART OF SECTIONS 7 AND 8, TOWNSHIP
 44 SOUTH, RANGE 42 EAST, VILLAGE OF WELLINGTON, PALM BEACH COUNTY, FLORIDA.
 SHEET 5 OF 15
 MARCH 2002



- LEGEND:**
- D = DELTA (CENTRAL ANGLE)
 - L = LENGTH
 - R = RADIUS
 - PB = PLAT BOOK
 - O.R.B. = OFFICIAL RECORD BOOK
 - PG = PAGE
 - = PERMANENT REFERENCE MONUMENT "LB 4318" (UNLESS OTHERWISE NOTED)
 - = PERMANENT CONTROL POINT "LB 4318"
 - (R) = RADIAL
 - UE = UTILITY EASEMENT
 - DE = DRAINAGE EASEMENT
 - MREE = MAINTENANCE & ROOF EAVE EASEMENT
 - LAE = LIMITED ACCESS EASEMENT
 - WMT = WATER MANAGEMENT TRACT
 - PLS = PROFESSIONAL LAND SURVEYOR
 - PSM = PROFESSIONAL SURVEYOR & MAPPER
 - LB = LICENSED SURVEYING & MAPPING BUSINESS
 - CH = CHORD DISTANCE
 - CB = CHORD BEARING
 - LWDD = LAKE WORTH DRAINAGE DISTRICT
 - PBC = PALM BEACH COUNTY
 - PDE = PUBLIC DRAINAGE EASEMENT



CURVE TABLE					
CURVE	DELTA	LENGTH	RADIUS	CHORD BEARING	CHORD DISTANCE
C1	0°57'11"	49.90'	3000.00'	N00°05'04"W	49.90'



BUENA VIDA

NICK MILLER, INC.
 Surveying & Mapping Consultants

SUITE 105
 2560 RCA BLVD.
 PALM BEACH GARDENS, FLORIDA 33410
 TEL 561 627-5200 FAX 561 627-0983
 D.B.P.R. LICENSED BUSINESS No. 4318

SHEET NO. **5**

SCALE: 1" = 50'
 DATE: MARCH 2002
 JOB NO. 1008.009
 FILE: 1008.09

MATCHLINE SEE SHEET 4 OF 15

MATCHLINE SEE SHEET 6 OF 15

MATCHLINE SEE SHEET 14 OF 15

SHEET INDEX