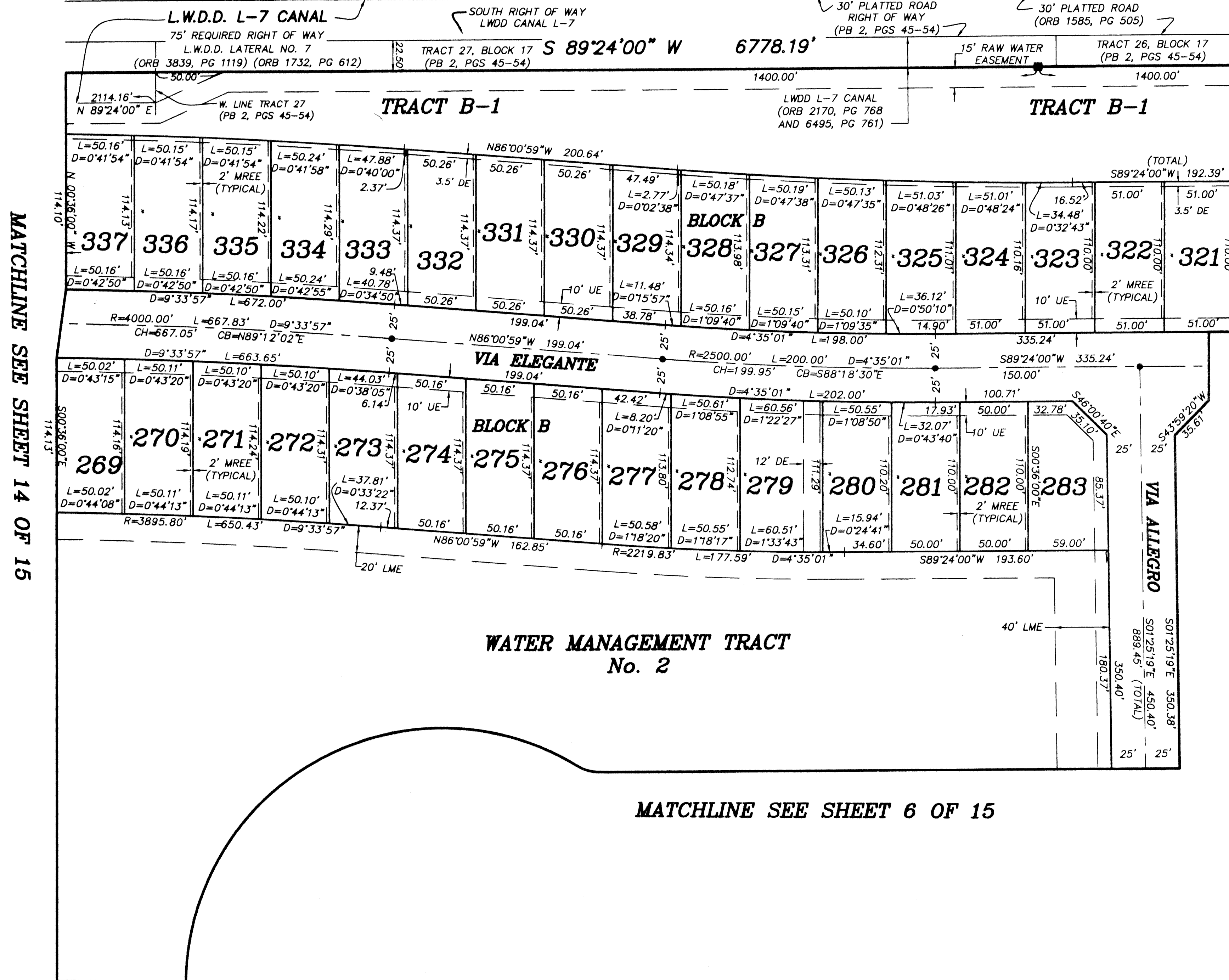


**BUENA VIDA**  
 BEING A REPLAT OF A PORTION OF BLOCKS 16 AND 17 OF PALM BEACH FARMS COMPANY  
 PLAT No. 3, AS RECORDED IN PLAT BOOK 2, PAGES 45 THROUGH 54 OF THE PUBLIC  
 RECORDS OF PALM BEACH COUNTY, FLORIDA, IN PART OF SECTIONS 7 AND 8, TOWNSHIP  
 44 SOUTH, RANGE 42 EAST, VILLAGE OF WELLINGTON, PALM BEACH COUNTY, FLORIDA.  
 SHEET 13 OF 15  
 MARCH 2002

STONEHAVEN, P.U.D.  
 (PB 88, PGS 1-11)

TRACT 22, BLOCK 17  
 PALM BEACH FARMS  
 COMPANY PLAT NO. 3  
 (PB 2, PGS 45-54)

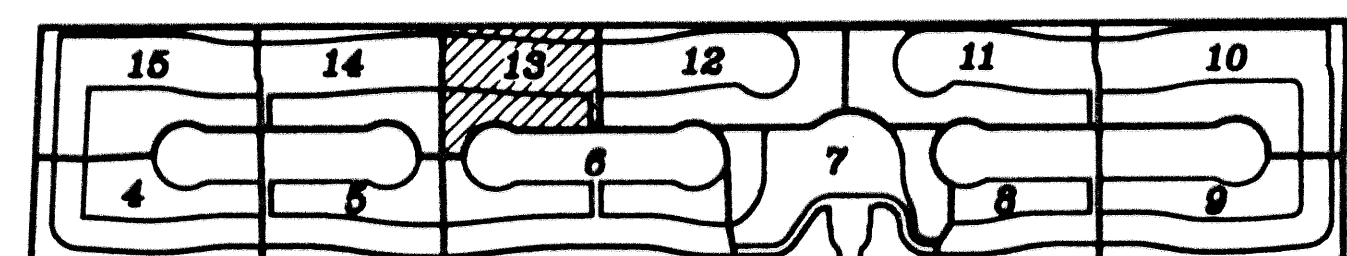
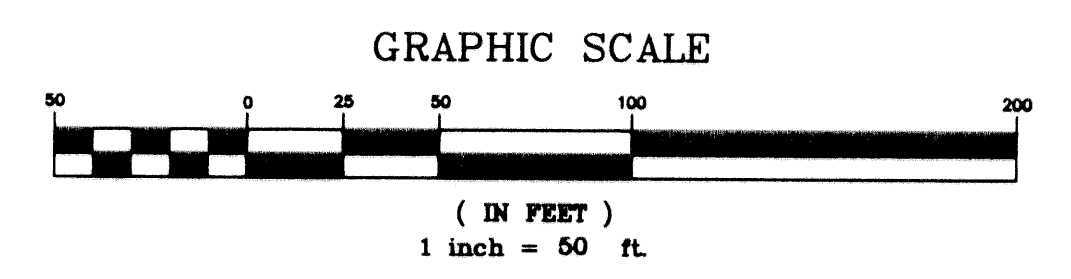
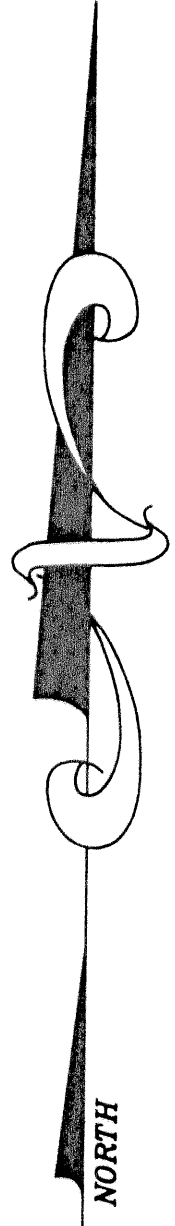
TRACT 23  
 BLOCK 17



MATCHLINE SEE SHEET 14 OF 15

MATCHLINE SEE SHEET 12 OF 15

MATCHLINE SEE SHEET 6 OF 15



SHEET INDEX

- LEGEND:**
- D= DELTA (CENTRAL ANGLE)
  - L= LENGTH
  - R= RADIUS
  - PB= PLAT BOOK
  - O.R.B.= OFFICIAL RECORD BOOK
  - PG= PAGE
  - = PERMANENT REFERENCE MONUMENT "LB 4318" (UNLESS OTHERWISE NOTED)
  - = PERMANENT CONTROL POINT "LB 4318"
  - (R)= RADIAL
  - UE= UTILITY EASEMENT
  - DE= DRAINAGE EASEMENT
  - MREE= MAINTAINENCE & ROOF EAVE EASEMENT
  - LME= LAKE MAINTAINENCE EASEMENT
  - LAE= LIMITED ACCESS EASEMENT
  - WMT= WATER MANAGEMENT TRACT
  - PLS= PROFESSIONAL LAND SURVEYOR
  - PSM= PROFESSIONAL SURVEYOR & MAPPER
  - LB= LICENSED SURVEYING & MAPPING BUSINESS
  - CH= CHORD DISTANCE
  - CB= CHORD BEARING
  - LWDD= LAKE WORTH DRAINAGE DISTRICT
  - PBC= PALM BEACH COUNTY
  - PDE= PUBLIC DRAINAGE EASEMENT

<b>BUENA VIDA</b>		
<b>NICK MILLER, INC.</b> Surveying & Mapping Consultants		
	SHEET NO.	SCALE: 1" = 50'
	<b>13</b>	DATE: MARCH 2002
	JOB NO. 1008.009	
	FILE: 1008.09	