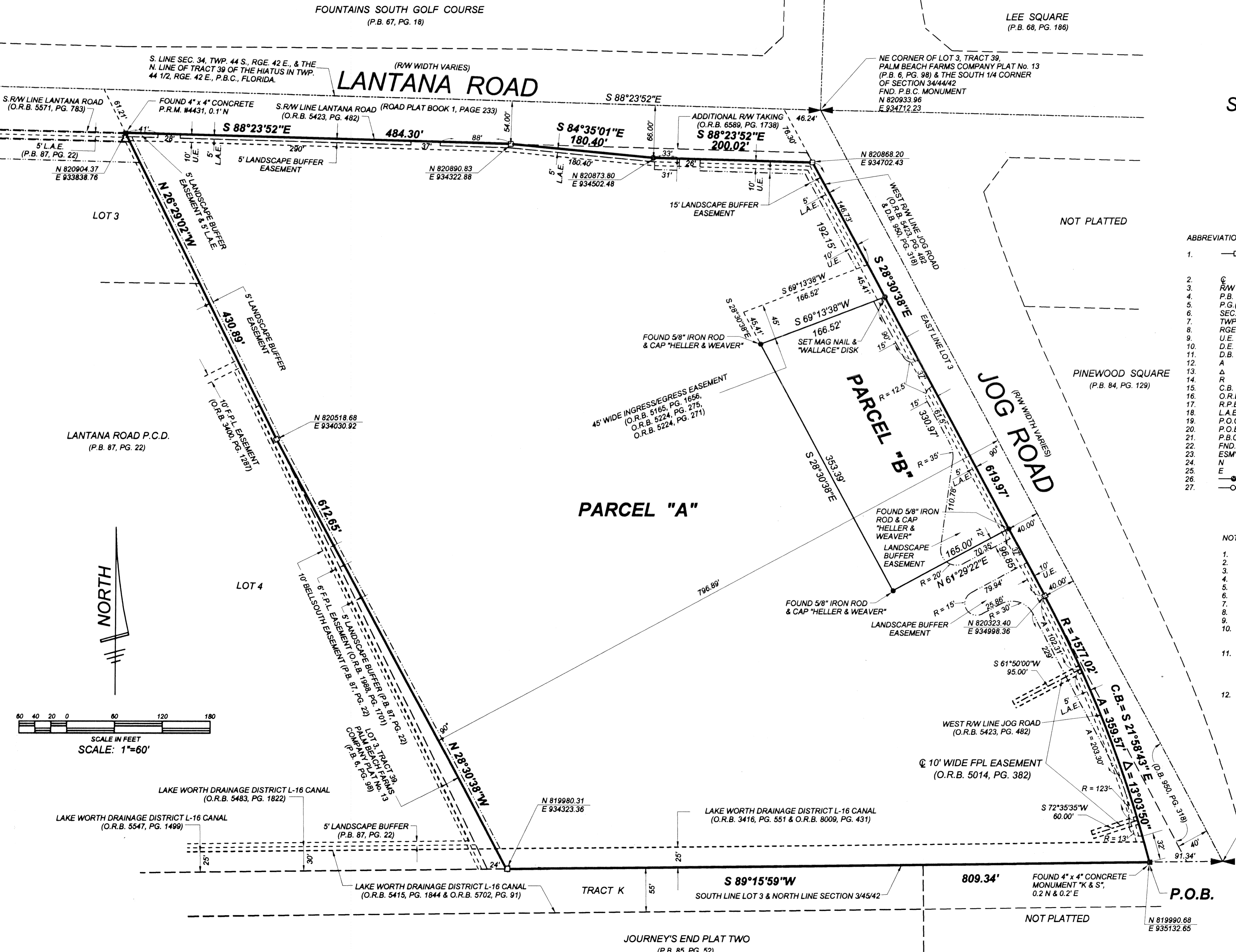


LANTANA SQUARE SHOPPING CENTER

BEING A REPLAT OF A PORTION OF LOT 3, TRACT 39, THE PALM BEACH FARMS COMPANY PLAT No. 13, ACCORDING TO THE PLAT THEREOF, ON FILE IN THE OFFICE OF THE CLERK OF THE CIRCUIT COURT IN AND FOR PALM BEACH COUNTY, FLORIDA, RECORDED IN PLAT BOOK 6, PAGE 98, LYING IN THE HIATUS BETWEEN TOWNSHIP 44 SOUTH AND TOWNSHIP 45 SOUTH, RANGE 42 EAST, PALM BEACH COUNTY, FLORIDA.

FEBRUARY, 2002

SHEET 3 OF 3



ABBREVIATIONS & SYMBOLS

- | | | | |
|-----|---------|---|---|
| 1. | □ | = | Denotes Set Permanent Reference Monuments (P.R.M.'s). 4" x 4" Concrete Monument with Disk Stamped "P.R.M. LS 3357." |
| 2. | ⊙ | = | Centerline |
| 3. | R/W | = | Right of Way |
| 4. | P.B. | = | Plat Book |
| 5. | P.G.(S) | = | Pages |
| 6. | SEC. | = | Section |
| 7. | TWP. | = | Township |
| 8. | RGE. | = | Range |
| 9. | U.E. | = | Utility Easement |
| 10. | D.E. | = | Drainage Easement |
| 11. | D.B. | = | Deed Book |
| 12. | A | = | Arc Length |
| 13. | Δ | = | Central Angle |
| 14. | R | = | Radius |
| 15. | C.B. | = | Chord Bearing |
| 16. | O.R.B. | = | Official Record Book |
| 17. | R.P.B. | = | Road Plat Book |
| 18. | L.A.E. | = | Limited Access Easement |
| 19. | P.O.C. | = | Point of Commencement |
| 20. | P.O.B. | = | Point of Beginning |
| 21. | P.B.C. | = | Palm Beach County |
| 22. | FND. | = | Found |
| 23. | ESMT | = | Easement |
| 24. | N | = | Northing |
| 25. | E | = | Easting |
| 26. | ⊙ | = | Set Mag Nail & Disk Stamped "P.R.M. LS 3357" |
| 27. | ⊙ | = | Set 5/8" Iron Rod & Cap Stamped "Wallace LB 4569" |

NOTES

- Coordinates shown are grid.
- Datum = NAD 83, 1990 adjustment.
- Zone = Florida East
- Linear unit = US foot
- Coordinate system 1983 State Plane Transverse Mercator Projection
- All distances are ground.
- Scale factor = 1.000029268
- Ground distance x scale factor = grid distance
- Bearings shown hereon are grid.
- No building or any kind of construction, trees or shrubs shall be placed on any easement without prior written consent of all easement beneficiaries and all applicable county approvals or permits as required for such encroachments.
- This plat, as recorded in its graphic form, is the official depiction of the subdivided lands described herein and will in no circumstances be supplanted in authority by any other graphic or digital form of the plat, whether graphic or digital. There may be additional restrictions that are not recorded on this plat that may be found in the public records of this county.
- This instrument prepared by:

Craig L. Wallace
Wallace Surveying Corporation
901 Northpoint Parkway, Suite 117
West Palm Beach, Florida 33407
561/640-4551

P.O.C.
SE CORNER OF LOT 3, TRACT 39,
PALM BEACH FARMS COMPANY PLAT No. 13
(P.B. 6, PG. 98) & THE NORTH 1/4 CORNER
OF SECTION 34/44/42
FND. P.B.C. MONUMENT
N 819991.86
E 935223.98

LANTANA SQUARE SHOPPING CENTER

WALLACE SURVEYING
CORP. LICENSED BUSINESS # 4569
901 NORTHPOINT PARKWAY, SUITE 117, WEST PALM BEACH, FLORIDA 33407 (561) 640-4551

FIELD:	JOB No.: 01-1113	F.B.:	PG.:
OFFICE: R.C.	DATE: NOV., 2001	DWG. No.:	01-1113
C'KD:	REF:	SHEET	3 OF 3

SUBDIVISION LANTANA SQUARE SHOPPING CENTER
BOOK 97
PAGE 131
FLOOD MAP # 170A
QUAD # 33
ZONING C/15E
SE R 14.440
TAZ 492
FUD NAME

