

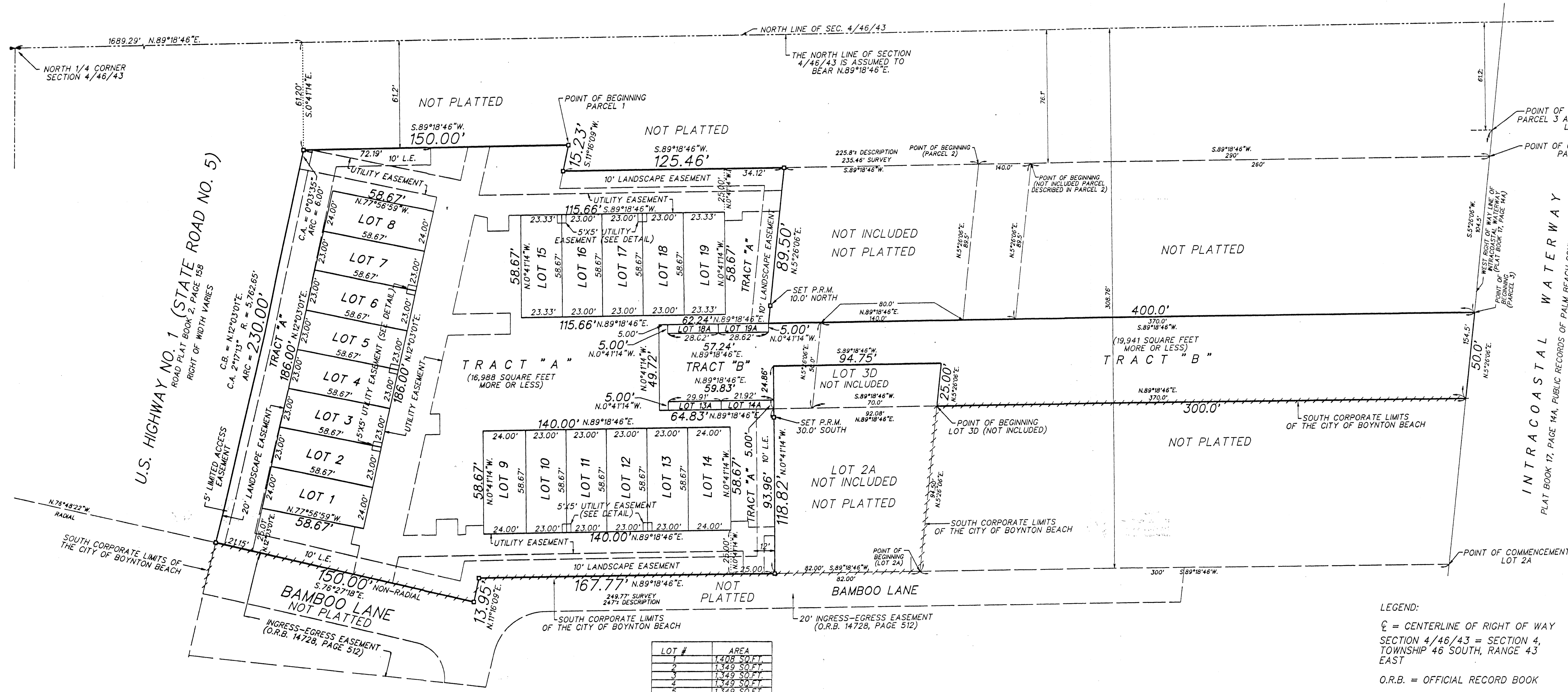
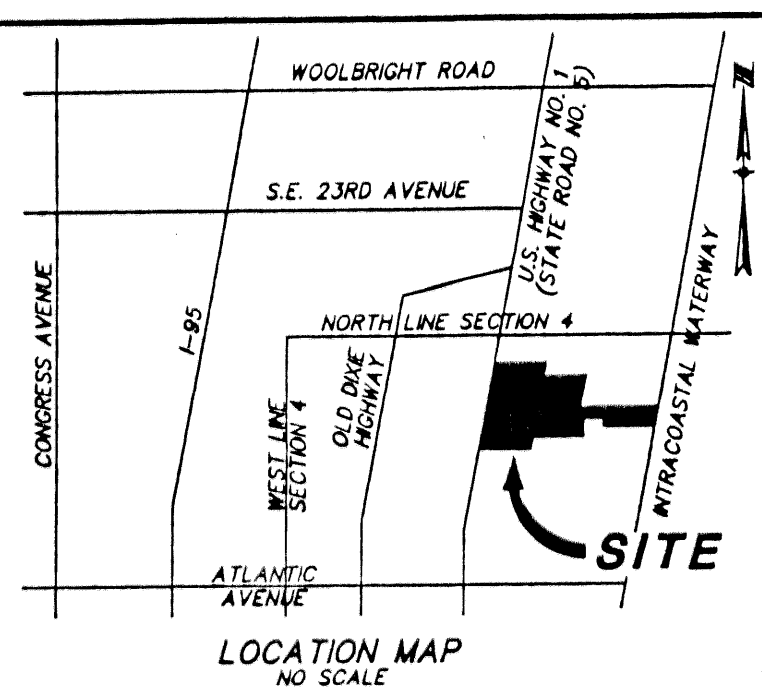
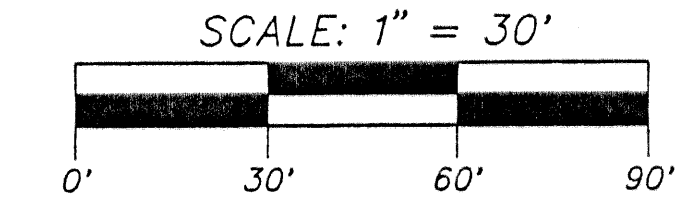
DAKOTA LOFTS, A P.U.D.

BEING A PORTION OF THE NORTHEAST QUARTER (N.E.1/4) OF SECTION 4, TOWNSHIP 46 SOUTH, RANGE 43 EAST, CITY OF BOYNTON BEACH, PALM BEACH COUNTY, FLORIDA

JULY 2002
SHEET 3 OF 3

THIS INSTRUMENT WAS PREPARED BY PAUL D. ENGLE, IN THE OFFICE OF O'BRIEN, SUTER & O'BRIEN, INC., 2601 NORTH FEDERAL HIGHWAY, DELRAY BEACH, FLORIDA 33483 (561) 276-4501

COUNTY OF PALM BEACH
STATE OF FLORIDA
THIS PLAT WAS FILED FOR RECORD AT _____
THIS _____ DAY OF _____
20____, AND DULY RECORDED IN PLAT BOOK NO. _____
ON PAGE _____
DORTHY H. WILKEN, CLERK OF CIRCUIT COURT
BY _____ D.C.



LOT #	AREA
1	1,408 SQ.FT.
2	1,349 SQ.FT.
3	1,349 SQ.FT.
4	1,349 SQ.FT.
5	1,349 SQ.FT.
6	1,349 SQ.FT.
7	1,349 SQ.FT.
8	1,408 SQ.FT.
9	1,408 SQ.FT.
10	1,349 SQ.FT.
11	1,349 SQ.FT.
12	1,349 SQ.FT.
13	1,349 SQ.FT.
14	1,408 SQ.FT.
15	1,408 SQ.FT.
16	1,349 SQ.FT.
17	1,349 SQ.FT.
18	1,349 SQ.FT.
19	1,408 SQ.FT.
13A	149 SQ.FT.
14A	150 SQ.FT.
18A	143 SQ.FT.
19A	143 SQ.FT.

NOTE: LOTS 13A, 14A, 18A & 19A ARE OPEN SPACE (PART OF CANAL)

- LEGEND:
- ☉ = CENTERLINE OF RIGHT OF WAY
 - SECTION 4/46/43 = SECTION 4, TOWNSHIP 46 SOUTH, RANGE 43 EAST
 - O.R.B. = OFFICIAL RECORD BOOK
 - L.E. = LANDSCAPE EASEMENT
 - U.E. = UTILITY EASEMENT
 - L.A.E. = LIMITED ACCESS EASEMENT
 - C.A. = CENTRAL ANGLE
 - R. = RADIUS
 - C.B. = CHORD BEARING
 - ☐ = SET P.R.M. (PERMANENT REFERENCE MONUMENT #LB 353) UNLESS NOTED OTHERWISE