

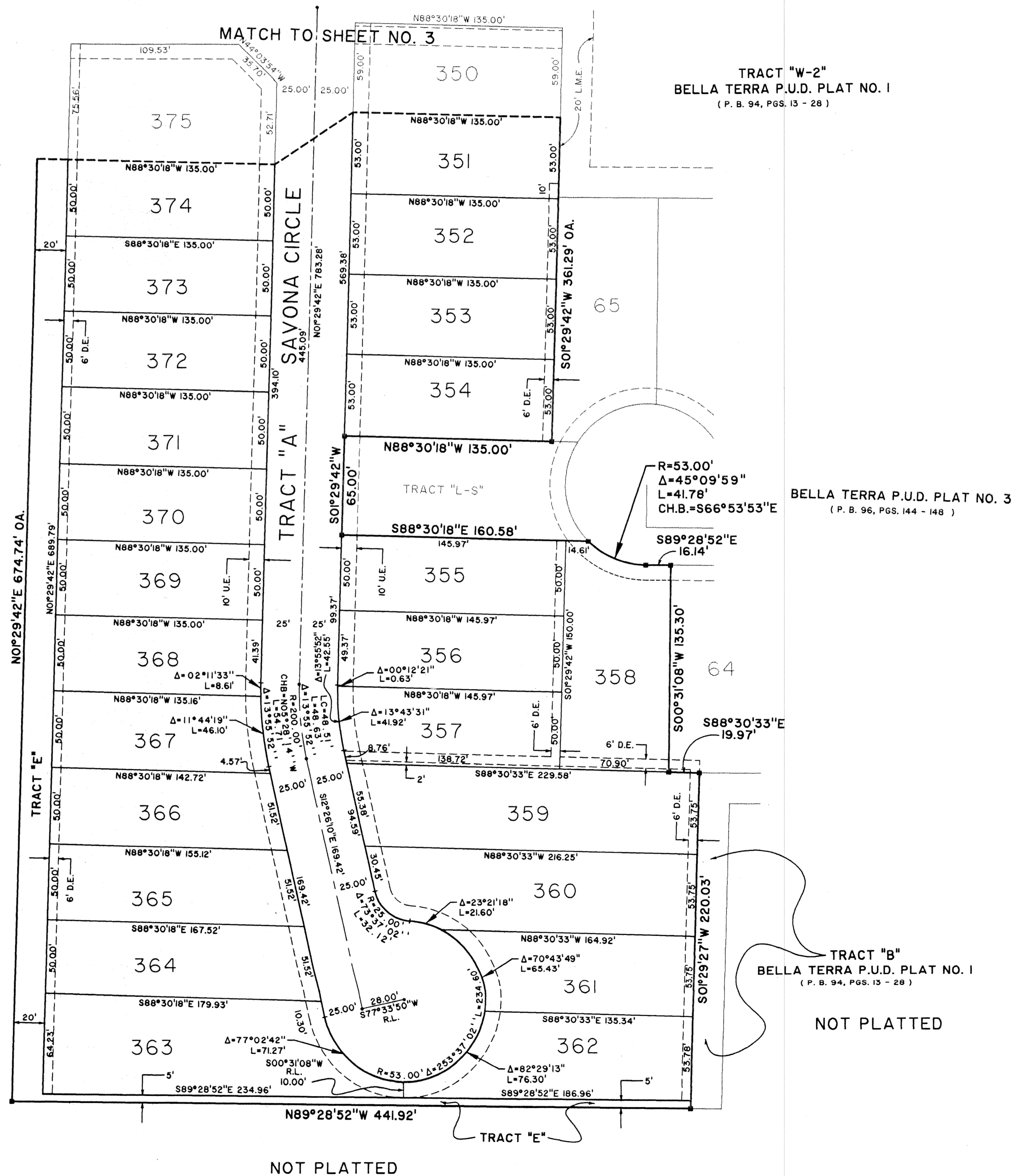
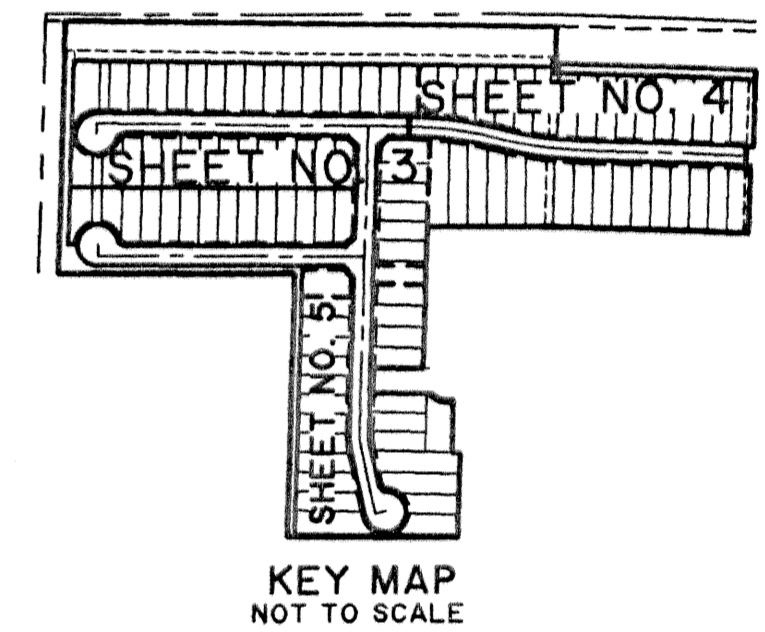
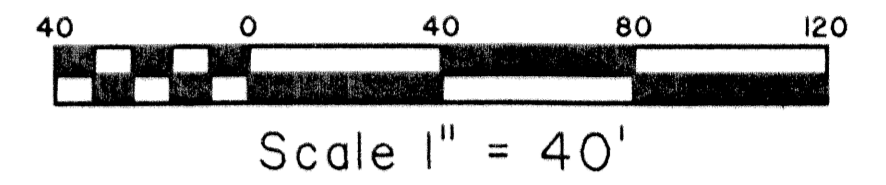
BELLA TERRA P.U.D. PLAT NO. 4

BEING A REPLAT OF A PORTION OF TRACT "F" AND A PORTION OF TRACT "B",
BELLA TERRA P.U.D. PLAT I, AS RECORDED IN PLAT BOOK 94, PAGES 13 THROUGH 28,
PUBLIC RECORDS OF PALM BEACH COUNTY, FLORIDA AND LYING IN SECTION 36, TOWNSHIP 43 SOUTH
RANGE 41 EAST, VILLAGE OF ROYAL PALM BEACH, PALM BEACH COUNTY, FLORIDA.
JANUARY, 2003 SHEET 5 OF 5

139



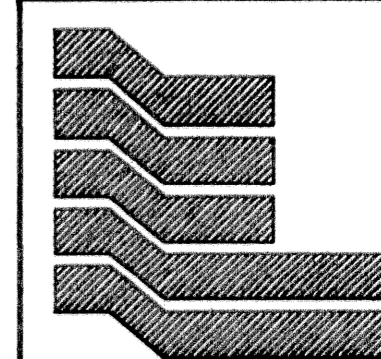
STATE OF FLORIDA SS
COUNTY OF PALM BEACH
THIS PLAT WAS FILED FOR RECORD AT _____
M. THIS DAY OF _____ 2003
AND DULY RECORDED IN PLAT BOOK NO. _____
ON PAGE _____
BY DOROTHY H. WILKEN, CLERK OF THE CIRCUIT COURT
D.C.



NOT PLATTED

NOT PLATTED

NOT PLATTED



Landmark Surveying & Mapping Inc.
1850 Forest Hill Boulevard
Ph. (561) 433-5405 Suite 100 W.P.B. Florida
LB # 4396

BELLA TERRA P.U.D. PLAT NO. 4