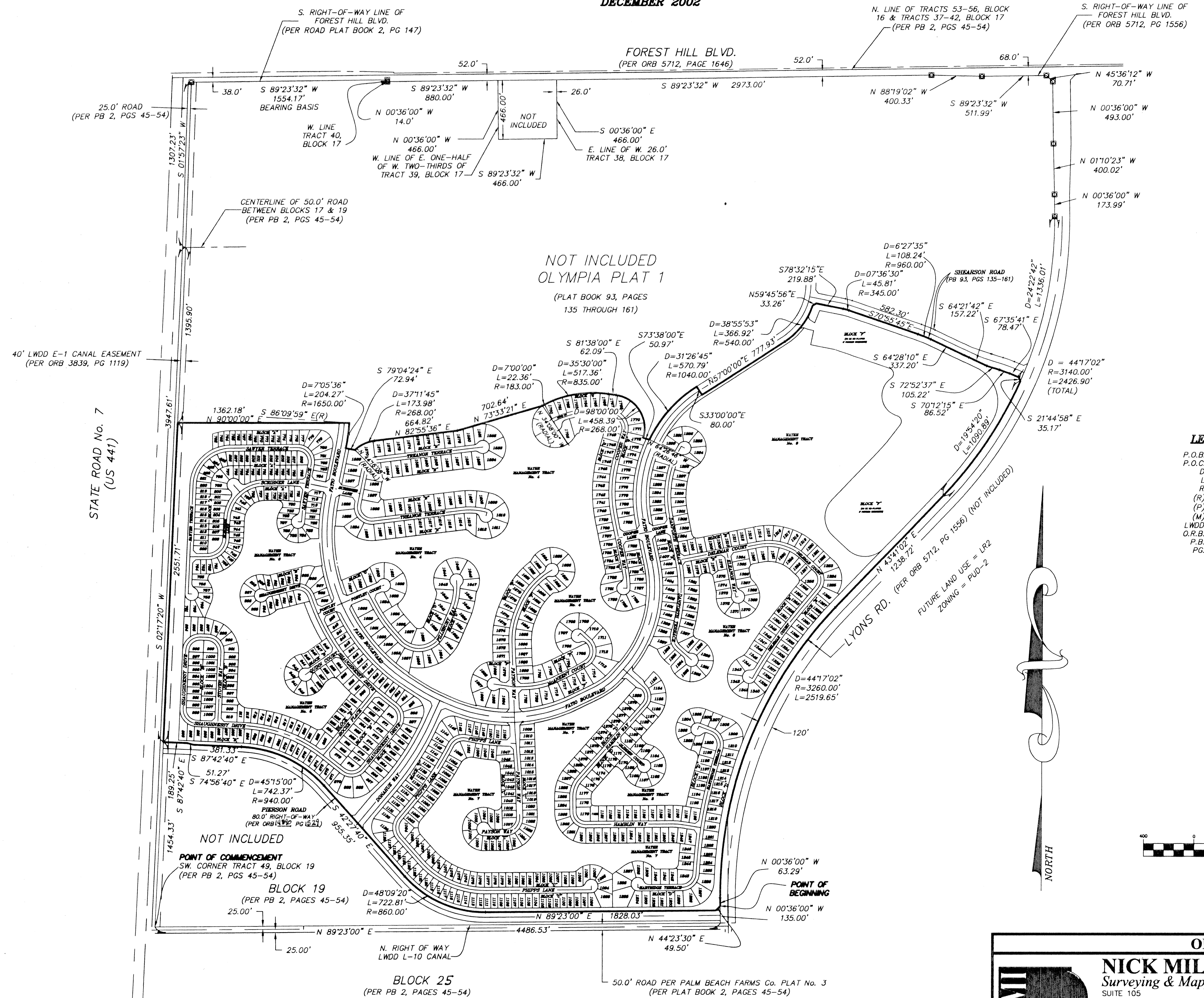
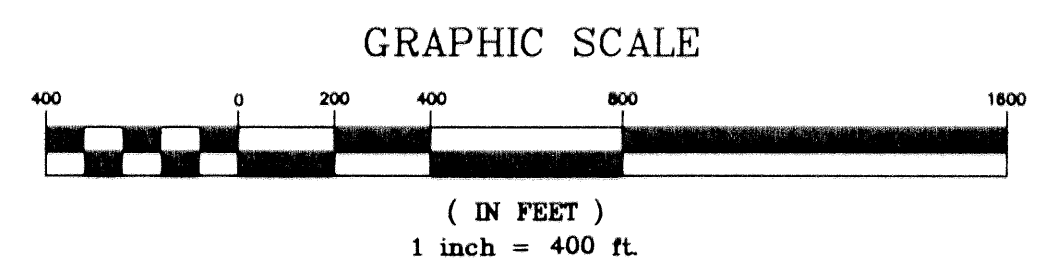
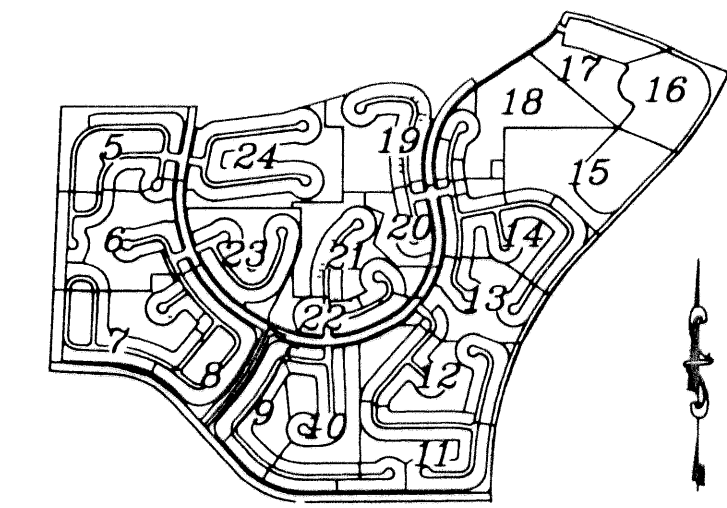


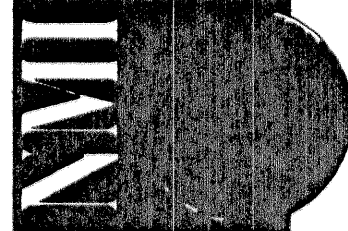
**OLYMPIA - PLAT II**  
 BEING A REPLAT OF A PORTION OF BLOCKS 19 AND 20 OF PALM BEACH FARMS COMPANY PLAT No. 3, AS RECORDED IN PLAT BOOK 2, PAGES 45 THROUGH 54 OF THE PUBLIC RECORDS OF PALM BEACH COUNTY, FLORIDA.  
 BEING IN PORTIONS OF SECTIONS 17, 18 AND 19, TOWNSHIP 44 SOUTH, RANGE 42 EAST, VILLAGE OF WELLINGTON, PALM BEACH COUNTY, FLORIDA  
**SHEET 4 OF 24**  
**DECEMBER 2002**



**LEGEND:**  
 P.O.B. = POINT OF BEGINNING  
 P.O.C. = POINT OF COMMENCEMENT  
 D = DELTA (CENTRAL ANGLE)  
 L = ARC LENGTH  
 R = RADIUS  
 (R) = RADIAL  
 (P) = PLAT  
 (M) = MEASURED  
 LWDD = LAKE WORTH DRAINAGE DISTRICT  
 O.R.B. = OFFICIAL RECORD BOOK  
 P.B. = PLAT BOOK  
 PG. = PAGE

**SHEET INDEX**



	<b>OLYMPIA - PLAT II</b>	
	<b>NICK MILLER, INC.</b> Surveying & Mapping Consultants	
	SHEET NO.	SCALE: 1" = 400'
	4	DATE: DEC. 2002
SUITE 105 2560 RCA BLVD. PALM BEACH GARDENS, FLORIDA 33410 TEL 561 627-5200 FAX 561 627-0983 D.B.P.R. LICENSED BUSINESS No. 4318		JOB NO. 1008.044 FILE: PHASE II SHEET 3