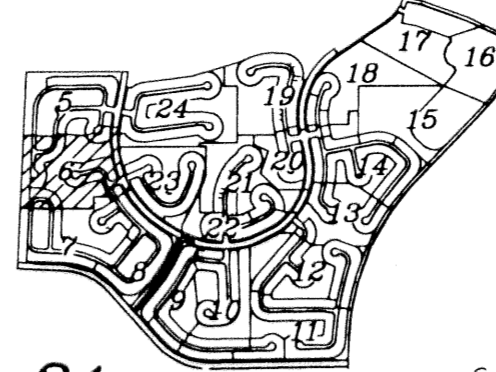


OLYMPIA - PLAT II

BEING A REPLAT OF A PORTION OF BLOCKS 19 AND 20 OF PALM BEACH FARMS COMPANY PLAT No. 3, AS RECORDED IN PLAT BOOK 2, PAGES 45 THROUGH 54 OF THE PUBLIC RECORDS OF PALM BEACH COUNTY FLORIDA. BEING IN PORTIONS OF SECTIONS 17, 18 AND 19, TOWNSHIP 44 SOUTH, RANGE 42 EAST, VILLAGE OF WELLINGTON, PALM BEACH COUNTY, FLORIDA

SHEET 6 OF 24
DECEMBER 2002

SHEET INDEX



SEE SHEET 5 OF 24
MATCHLINE

MATCHLINE SEE SHEET 24 OF 24

TRACT B-8
FATIO BOULEVARD

MATCHLINE SEE SHEET 23 OF 24

WATER MANAGEMENT TRACT No. 4

SEE SHEET 23 OF 24
MATCHLINE

MATCHLINE SEE SHEET 23 OF 24

MATCHLINE SEE SHEET 8 OF 24

WATER MANAGEMENT TRACT No. 6

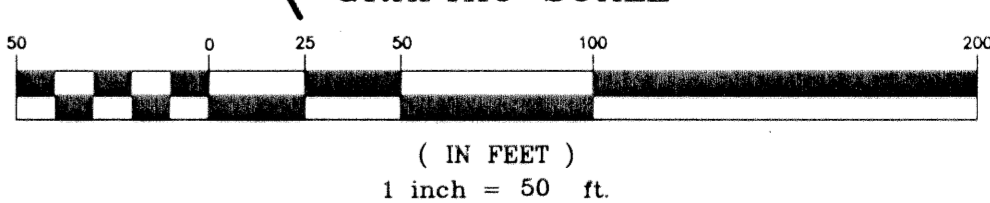
WATER MANAGEMENT TRACT No. 6

LEGEND:

- D= DELTA (CENTRAL ANGLE)
- L= LENGTH
- R= RADIUS
- PSM= PROFESSIONAL SURVEYOR AND MAPPER
- PLS= PROFESSIONAL LAND SURVEYOR
- LAE= LIMITED ACCESS EASEMENT
- MREE= MAINTENANCE ROOF AND EAVES EASEMENT
- UE= UTILITY EASEMENT
- DE NO.1= DRAINAGE EASEMENT No. 1
- IDE G-1= INTERIOR DRAINAGE EASEMENT No. G-1
- WMT= WATER MANAGEMENT TRACT
- ORB= OFFICIAL RECORD BOOK
- P.B.= PLAT BOOK
- PG.= PAGE
- (R)= RADIAL
- = PERMANENT REFERENCE MONUMENT "LB 4318" (UNLESS OTHERWISE NOTED)
- = PERMANENT CONTROL POINT "LB 4318"
- = LAKE MAINTENANCE EASEMENT
- LMAE= LAKE MAINTENANCE ACCESS EASEMENT
- LWDD= LAKE WORTH DRAINAGE DISTRICT
- CB= CHORD BEARING
- CD= CHORD DISTANCE
- PBC= PALM BEACH COUNTY

MATCHLINE
SEE SHEET 7 OF 24

GRAPHIC SCALE

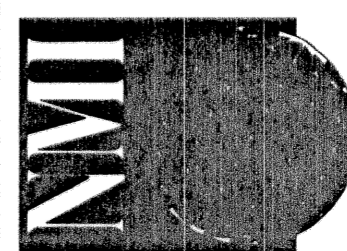


OLYMPIA - PLAT II

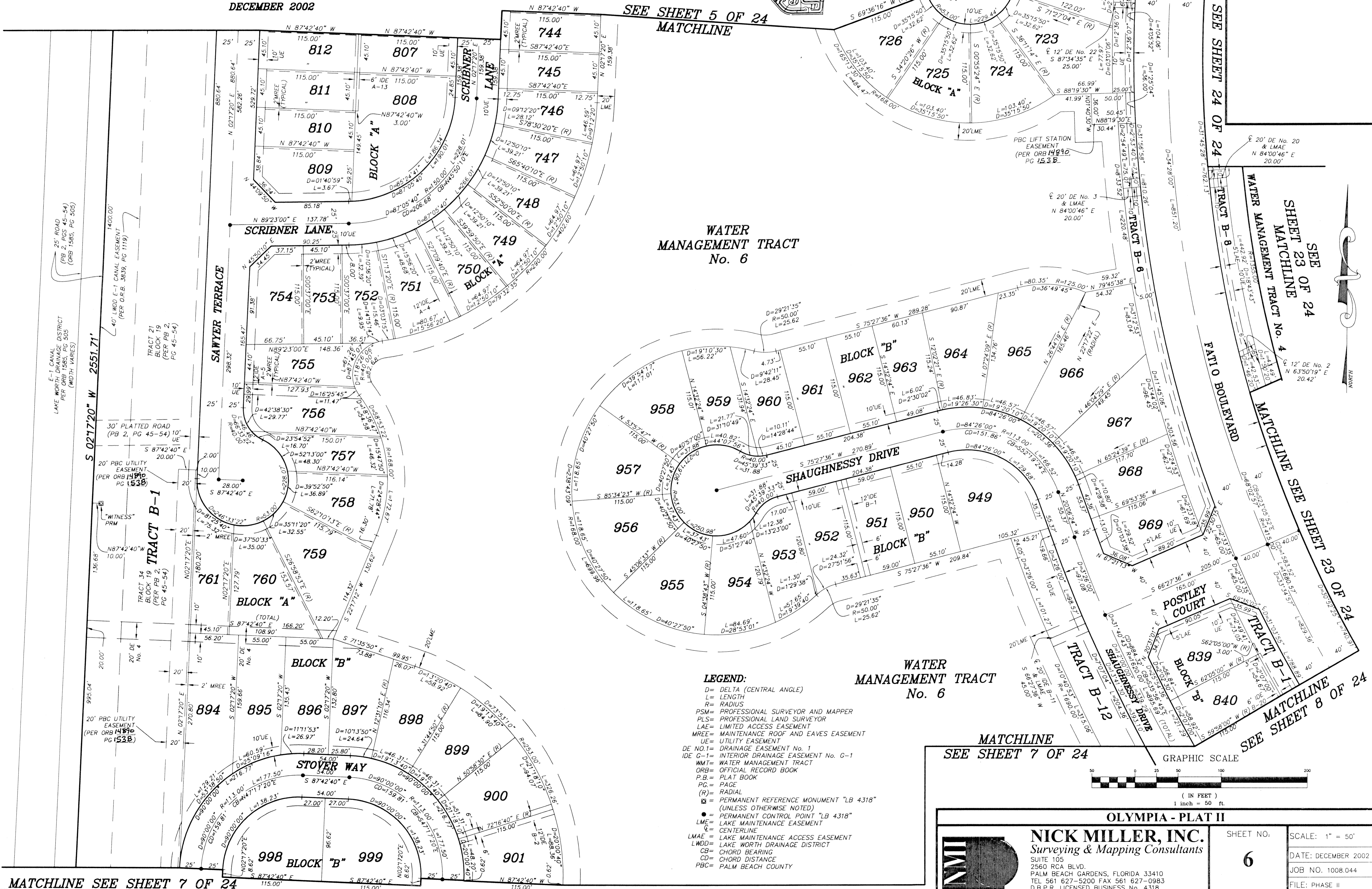
NICK MILLER, INC.
Surveying & Mapping Consultants

SHEET NO:
6

SCALE: 1" = 50'
DATE: DECEMBER 2002
JOB NO. 1008.044
FILE: PHASE II



2560 RCA BLVD.
PALM BEACH GARDENS, FLORIDA 33410
TEL 561 627-5200 FAX 561 627-0983
D.B.P.R. LICENSED BUSINESS No. 4318



MATCHLINE SEE SHEET 7 OF 24