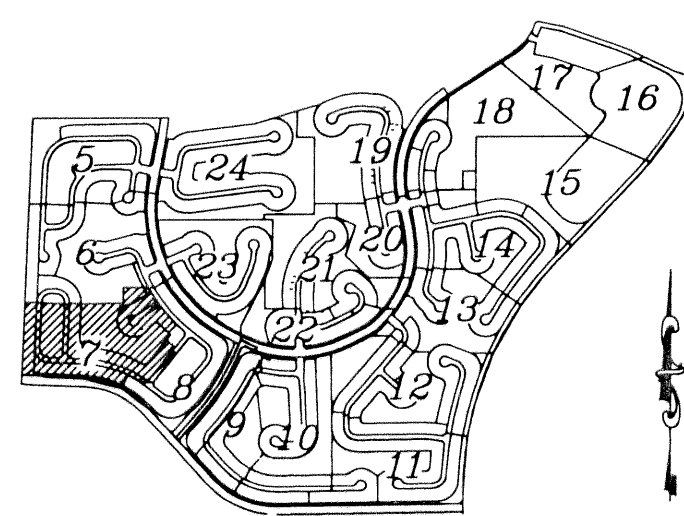


OLYMPIA - PLAT II

BEING A REPLAT OF A PORTION OF BLOCKS 19 AND 20 OF PALM BEACH FARMS COMPANY PLAT No. 3, AS RECORDED IN PLAT BOOK 2, PAGES 45 THROUGH 54 OF THE PUBLIC RECORDS OF PALM BEACH COUNTY FLORIDA. BEING IN PORTIONS OF SECTIONS 17, 18 AND 19, TOWNSHIP 44 SOUTH, RANGE 42 EAST, VILLAGE OF WELLINGTON, PALM BEACH COUNTY, FLORIDA SHEET 7 OF 24 DECEMBER 2002

SHEET INDEX



SEE SHEET 6 OF 24 MATCHLINE

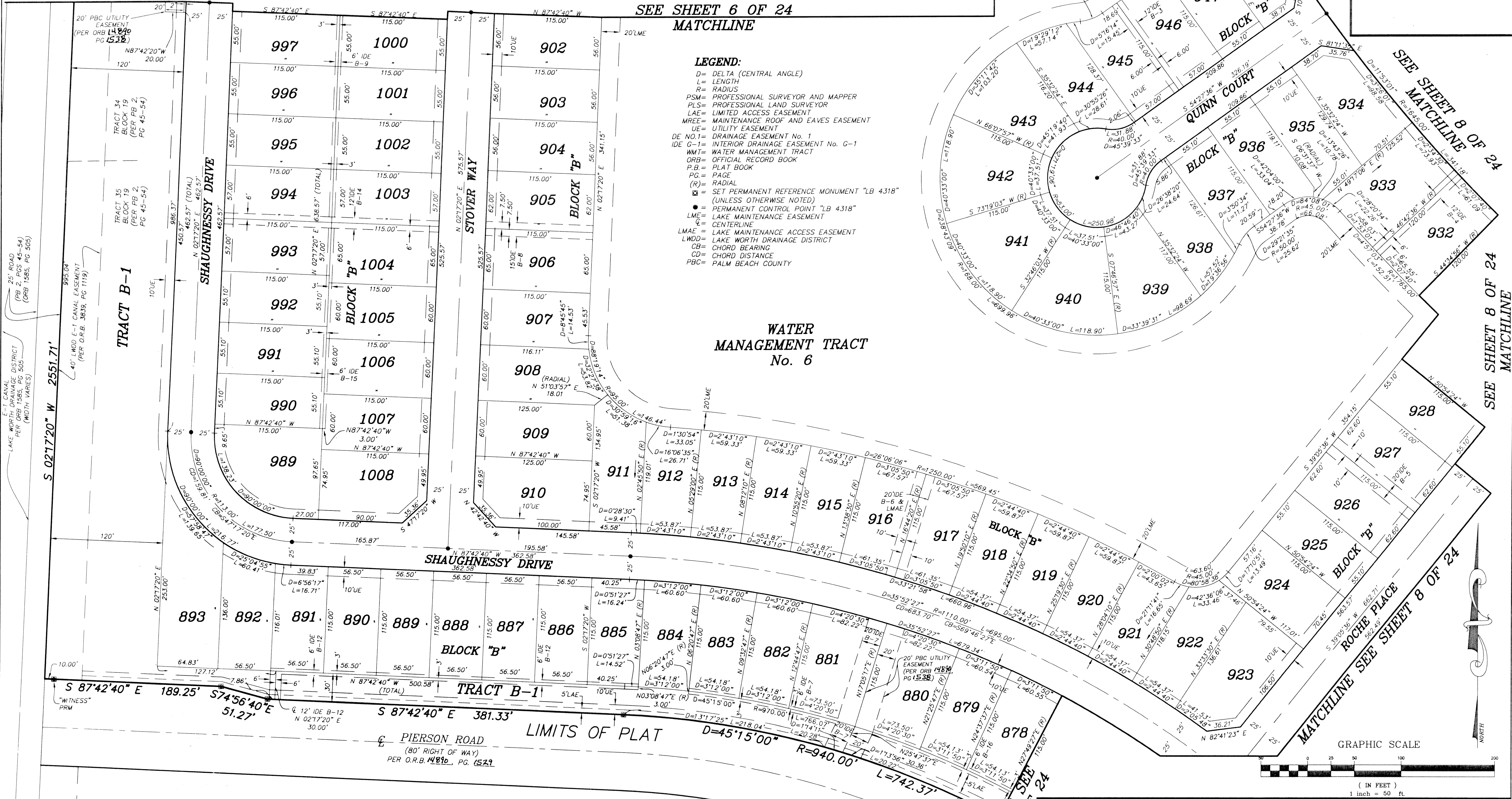
SEE SHEET 6 OF 24 MATCHLINE

SEE SHEET 6 OF 24 MATCHLINE

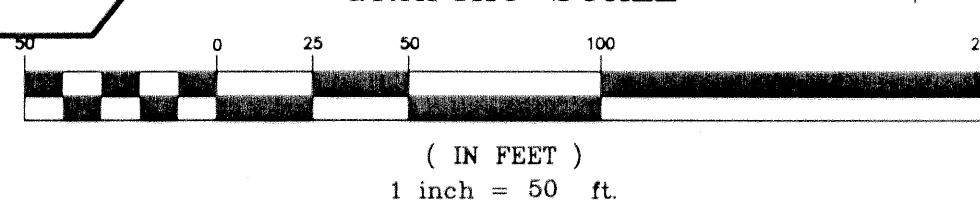
LEGEND:

- D= DELTA (CENTRAL ANGLE)
L= LENGTH
R= RADIUS
PSM= PROFESSIONAL SURVEYOR AND MAPPER
PLS= PROFESSIONAL LAND SURVEYOR
LAE= LIMITED ACCESS EASEMENT
MREE= MAINTENANCE ROOF AND EAVES EASEMENT
UE= UTILITY EASEMENT
DE NO.1= DRAINAGE EASEMENT No. 1
IDE G-1= INTERIOR DRAINAGE EASEMENT No. G-1
WMT= WATER MANAGEMENT TRACT
ORB= OFFICIAL RECORD BOOK
PG.= PAGE
(R)= RADIAL
[Symbol] = SET PERMANENT REFERENCE MONUMENT "LB 4318" (UNLESS OTHERWISE NOTED)
[Symbol] = PERMANENT CONTROL POINT "LB 4318"
LME= LAKE MAINTENANCE EASEMENT
LM= CENTERLINE
LMAE= LAKE MAINTENANCE ACCESS EASEMENT
LWD= LAKE WORTH DRAINAGE DISTRICT
CB= CHORD BEARING
CD= CHORD DISTANCE
PBC= PALM BEACH COUNTY

WATER MANAGEMENT TRACT No. 6



GRAPHIC SCALE



OLYMPIA - PLAT II

NICK MILLER, INC. Surveying & Mapping Consultants

SUITE 105 2560 RCA BLVD. PALM BEACH GARDENS, FLORIDA 33410 TEL 561 627-5200 FAX 561 627-0983 D.B.P.R. LICENSED BUSINESS No. 4318

SHEET NO.

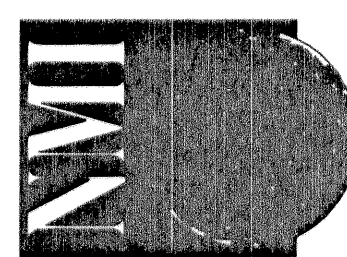
7

SCALE: 1"=50'

DATE: DECEMBER 2002

JOB NO. 1008.044

FILE: PHASE II



MATCHLINE SEE SHEET 8 OF 24

MATCHLINE SEE SHEET 8 OF 24

SEE SHEET 8 OF 24 MATCHLINE

SEE SHEET 8 OF 24 MATCHLINE

7