

OLYMPIA - PLAT II  
BEING A REPLAT OF A PORTION OF BLOCKS 19 AND 20 OF PALM BEACH FARMS COMPANY PLAT No. 3, AS RECORDED IN PLAT BOOK 2, PAGES 45 THROUGH 54 OF THE PUBLIC RECORDS OF PALM BEACH COUNTY, FLORIDA.  
BEING IN PORTIONS OF SECTIONS 17, 18 AND 19, TOWNSHIP 44 SOUTH, RANGE 42 EAST, VILLAGE OF WELLINGTON, PALM BEACH COUNTY, FLORIDA  
SHEET 13 OF 24  
DECEMBER 2002

MATCHLINE SEE SHEET 14 OF 24

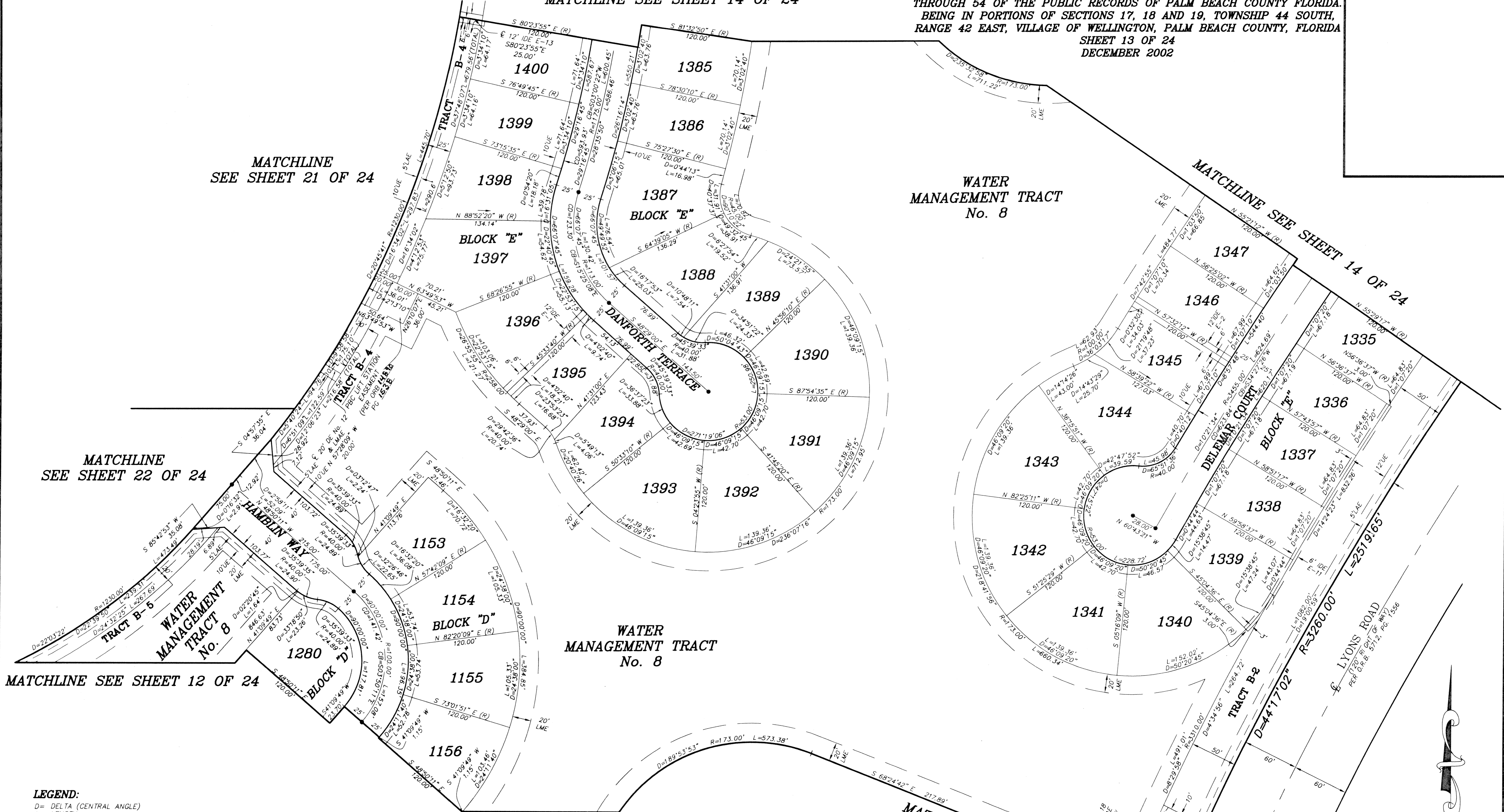
MATCHLINE  
SEE SHEET 21 OF 24

WATER  
MANAGEMENT TRACT  
No. 8

MATCHLINE SEE SHEET 14 OF 24

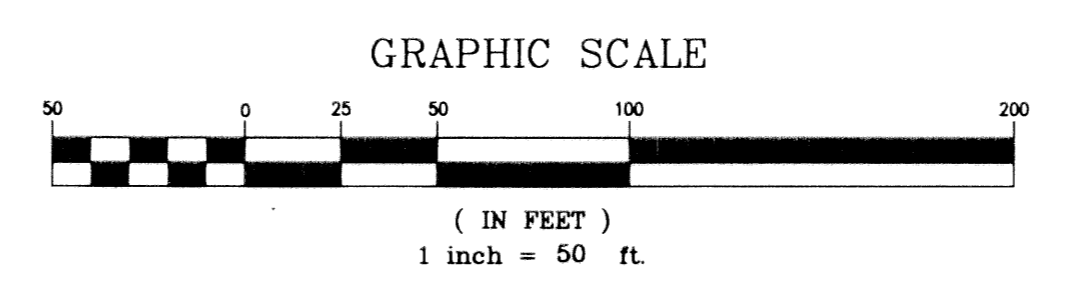
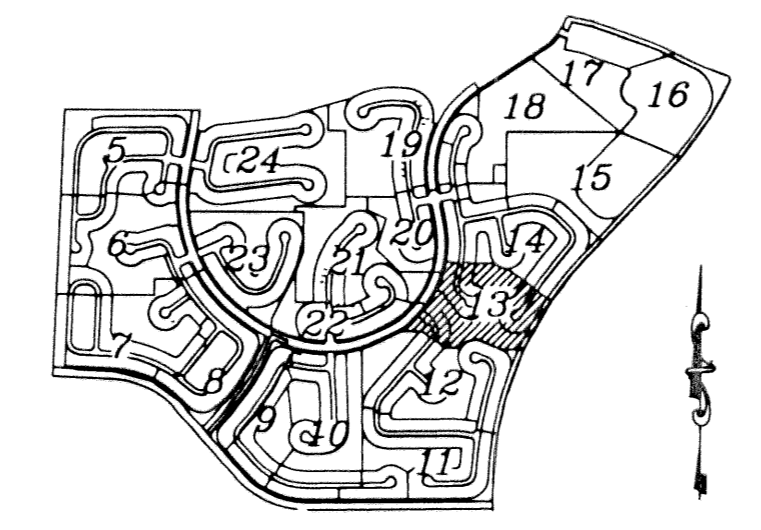
MATCHLINE  
SEE SHEET 22 OF 24

MATCHLINE SEE SHEET 12 OF 24



- LEGEND:**
- D= DELTA (CENTRAL ANGLE)
  - L= LENGTH
  - R= RADIUS
  - PSM= PROFESSIONAL SURVEYOR AND MAPPER
  - PLS= PROFESSIONAL LAND SURVEYOR
  - LAE= LIMITED ACCESS EASEMENT
  - MREE= MAINTENANCE ROOF AND EAVES EASEMENT
  - UE= UTILITY EASEMENT
  - DE NO.1= DRAINAGE EASEMENT No. 1
  - IDE G-1= INTERIOR DRAINAGE EASEMENT No. G-1
  - WMT= WATER MANAGEMENT TRACT
  - ORB= OFFICIAL RECORD BOOK
  - P.B.= PLAT BOOK
  - P.G.= PAGE
  - (R)= RADIAL
  - ☐= PERMANENT REFERENCE MONUMENT "LB 4318" (UNLESS OTHERWISE NOTED)
  - = PERMANENT CONTROL POINT "LB 4318"
  - LME= LAKE MAINTENANCE EASEMENT
  - ⊙= CENTERLINE
  - LMAC= LAKE MAINTENANCE ACCESS EASEMENT
  - LWDD= LAKE WORTH DRAINAGE DISTRICT
  - CB= CHORD BEARING
  - CD= CHORD DISTANCE
  - PBC= PALM BEACH COUNTY

SHEET INDEX



**OLYMPIA - PLAT II**  
**NICK MILLER, INC.**  
Surveying & Mapping Consultants  
SUITE 105  
2560 RCA BLVD.  
PALM BEACH GARDENS, FLORIDA 33410  
TEL 561 627-5200 FAX 561 627-0983  
D.B.P.R. LICENSED BUSINESS No. 4318

SHEET NO.	SCALE: 1" = 50'
<b>13</b>	DATE: DECEMBER 2002
	JOB NO. 1008.044
	FILE: PHASE II

