

MATCHLINE SEE SHEET 17 OF 24

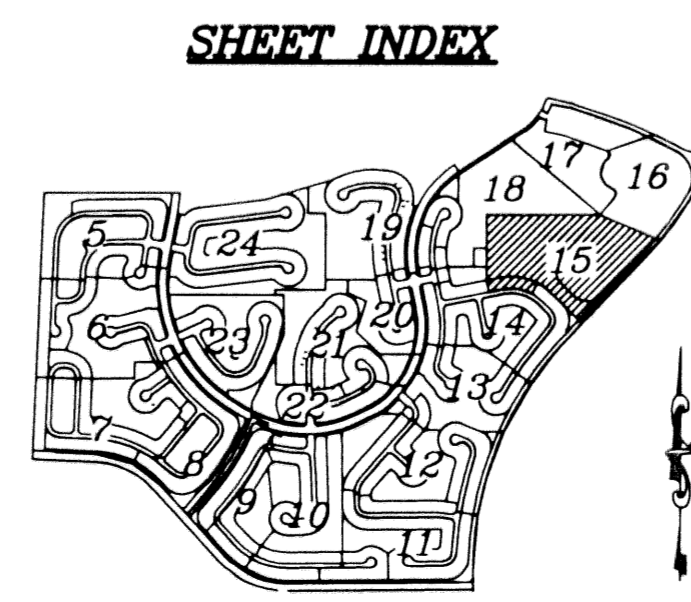
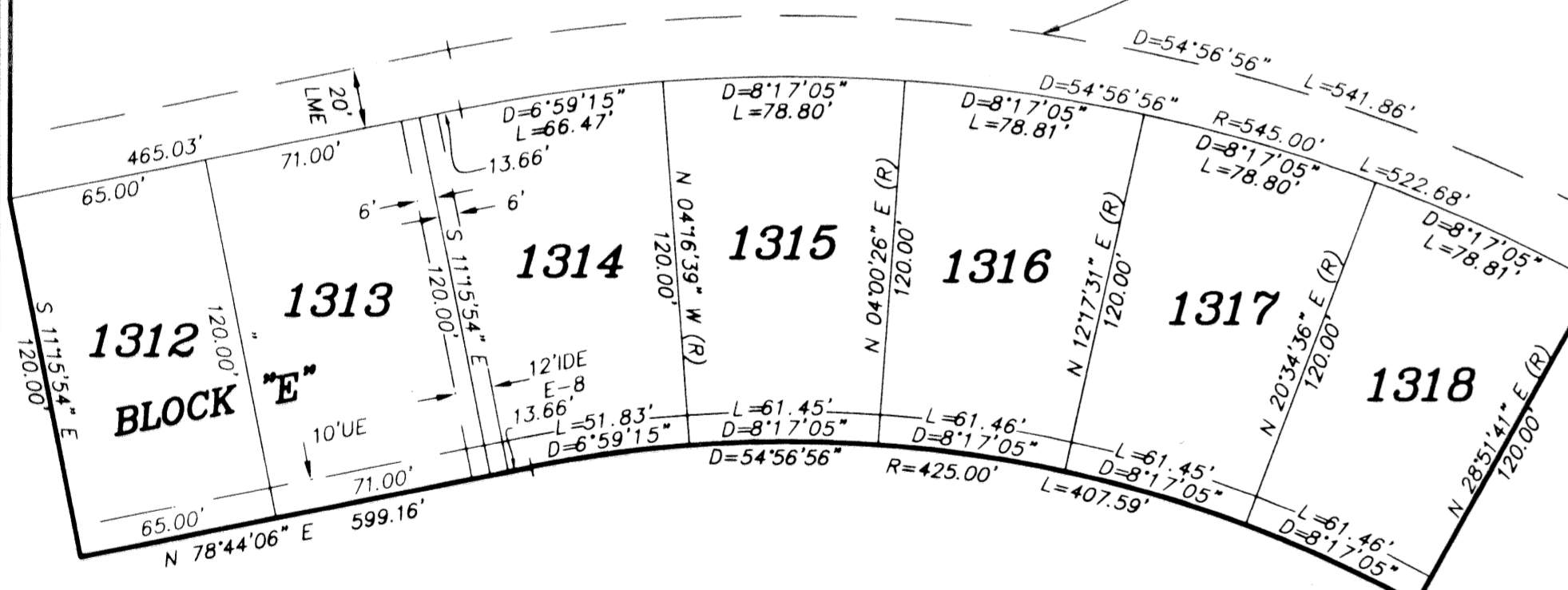
MATCHLINE SEE SHEET 18 OF 24

MATCHLINE SEE SHEET 16 OF 24

OLYMPIA - PLAT II
 BEING A REPLAT OF A PORTION OF BLOCKS 19 AND 20 OF PALM BEACH FARMS COMPANY PLAT No. 3, AS RECORDED IN PLAT BOOK 2, PAGES 45 THROUGH 54 OF THE PUBLIC RECORDS OF PALM BEACH COUNTY FLORIDA. BEING IN PORTIONS OF SECTIONS 17, 18 AND 19, TOWNSHIP 44 SOUTH, RANGE 42 EAST, VILLAGE OF WELLINGTON, PALM BEACH COUNTY, FLORIDA
 SHEET 15 OF 24
 DECEMBER 2002

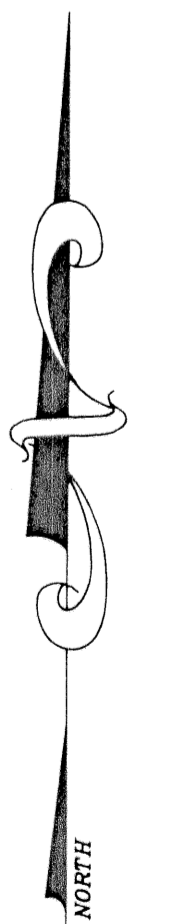
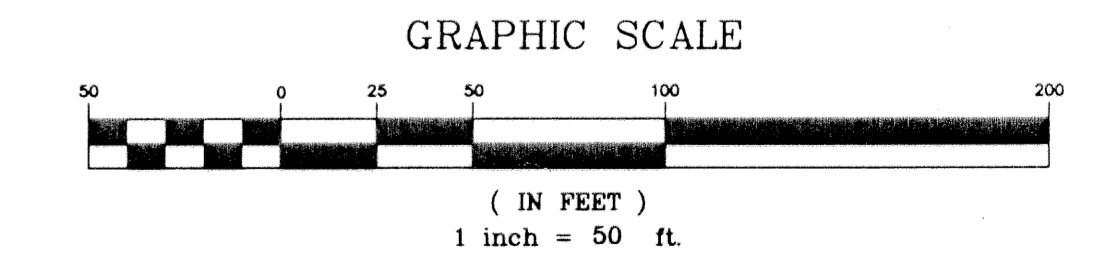
WATER MANAGEMENT TRACT No. 9

BLOCK "F"
 (TO BE RE-PLATTED IF FURTHER SUBDIVIDED)



- LEGEND:**
- D= DELTA (CENTRAL ANGLE)
 - L= LENGTH
 - R= RADIUS
 - PSM= PROFESSIONAL SURVEYOR AND MAPPER
 - PLS= PROFESSIONAL LAND SURVEYOR
 - LAE= LIMITED ACCESS EASEMENT
 - MREE= MAINTENANCE ROOF AND EAVES EASEMENT
 - UE= UTILITY EASEMENT
 - DE NO. 1= DRAINAGE EASEMENT No. 1
 - IDE G-1= INTERIOR DRAINAGE EASEMENT No. G-1
 - WMT= WATER MANAGEMENT TRACT
 - ORB= OFFICIAL RECORD BOOK
 - P.B.= PLAT BOOK
 - PG.= PAGE
 - (R)= RADIAL
 - ☒ = SET PERMANENT REFERENCE MONUMENT "LB 4318" (UNLESS OTHERWISE NOTED)
 - = PERMANENT CONTROL POINT "LB 4318"
 - LME= LAKE MAINTENANCE EASEMENT CENTERLINE
 - LMAE= LAKE MAINTENANCE ACCESS EASEMENT
 - LWDD= LAKE WORTH DRAINAGE DISTRICT
 - CB= CHORD BEARING
 - CD= CHORD DISTANCE
 - PBC= PALM BEACH COUNTY

SEE MATCHLINE SEE SHEET 14 OF 24



	OLYMPIA - PLAT II	
	NICK MILLER, INC. Surveying & Mapping Consultants SUITE 105 2560 RCA BLVD. PALM BEACH GARDENS, FLORIDA 33410 TEL 561 627-5200 FAX 561 627-0983 D.B.P.R. LICENSED BUSINESS No. 4318	SHEET NO. <h1 style="text-align: center;">15</h1>