

OLYMPIA PLAT I (PLAT BOOK 93, PAGES 135-161)

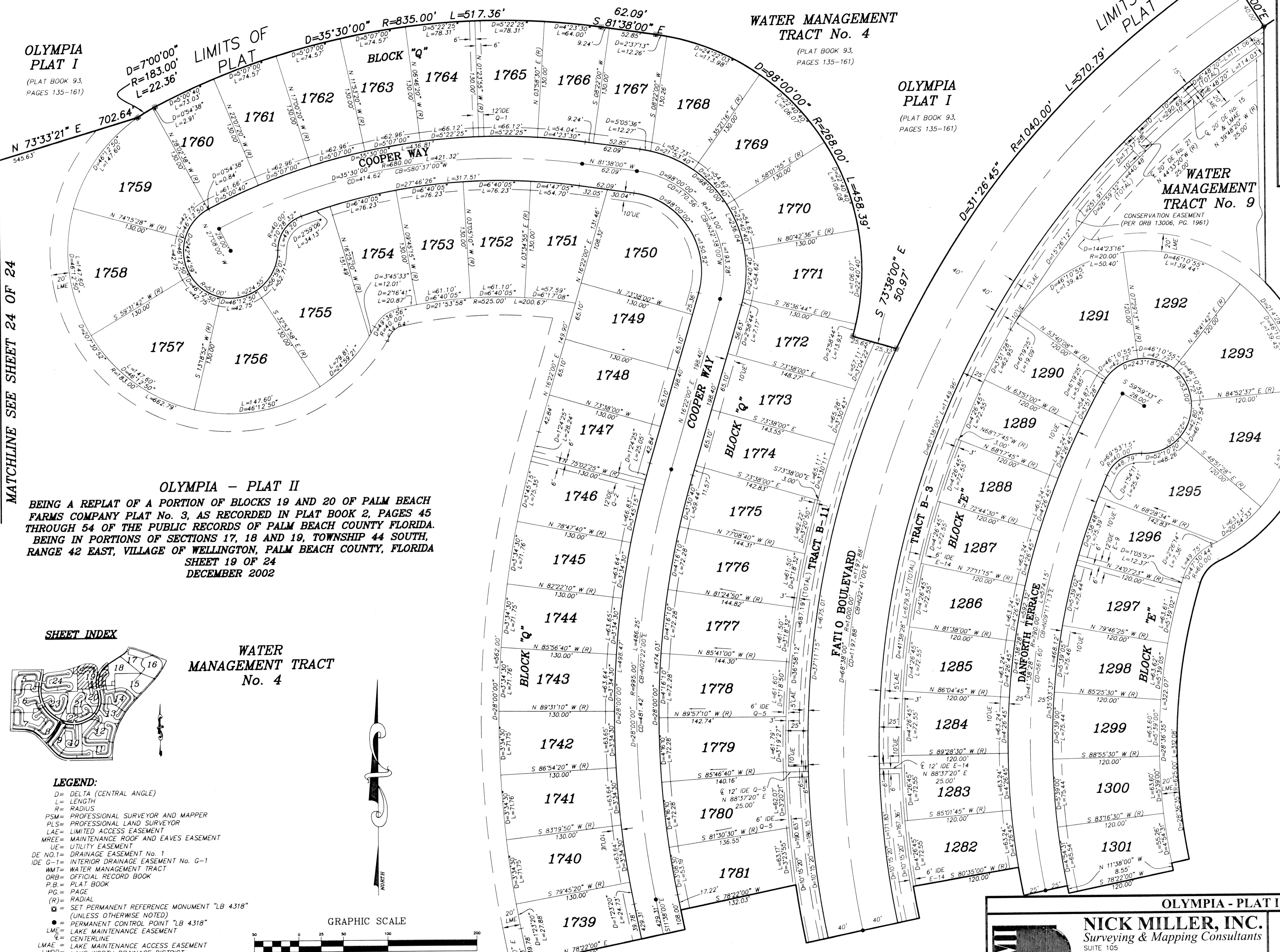
WATER MANAGEMENT TRACT No. 4 (PLAT BOOK 93, PAGES 135-161)

OLYMPIA PLAT I (PLAT BOOK 93, PAGES 135-161)

LIMITS OF PLAT

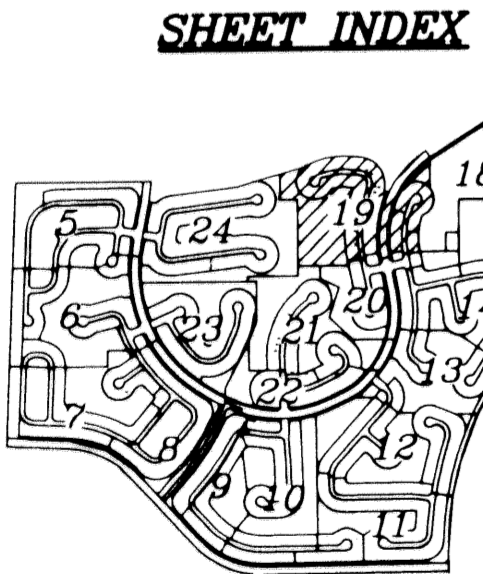
MATCHLINE SEE SHEET 24 OF 24

MATCHLINE SEE SHEET 18 OF 24



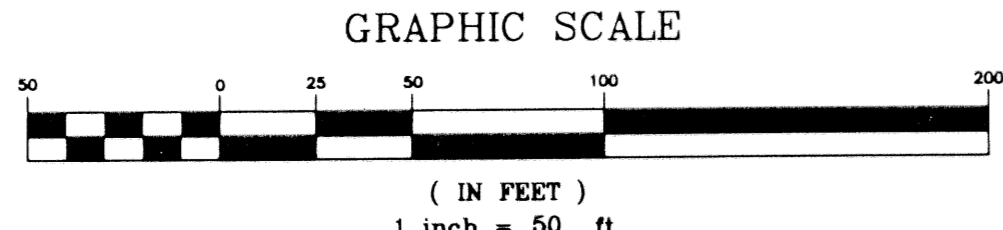
OLYMPIA - PLAT II BEING A REPLAT OF A PORTION OF BLOCKS 19 AND 20 OF PALM BEACH FARMS COMPANY PLAT No. 3, AS RECORDED IN PLAT BOOK 2, PAGES 45 THROUGH 54 OF THE PUBLIC RECORDS OF PALM BEACH COUNTY FLORIDA. BEING IN PORTIONS OF SECTIONS 17, 18 AND 19, TOWNSHIP 44 SOUTH, RANGE 42 EAST, VILLAGE OF WELLINGTON, PALM BEACH COUNTY, FLORIDA

SHEET 19 OF 24 DECEMBER 2002



- LEGEND: D= DELTA (CENTRAL ANGLE), L= LENGTH, R= RADIUS, PSM= PROFESSIONAL SURVEYOR AND MAPPER, PL= PROFESSIONAL LAND SURVEYOR, LAE= LIMITED ACCESS EASEMENT, MREE= MAINTENANCE ROOF AND EAVES EASEMENT, UE= UTILITY EASEMENT, DE NO. 1= DRAINAGE EASEMENT No. 1, IDE G-1= INTERIOR DRAINAGE EASEMENT No. G-1, WMT= WATER MANAGEMENT TRACT, ORB= OFFICIAL RECORD BOOK, P.B.= PLAT BOOK, PG.= PAGE, (R)= RADIAL, (S)= SET PERMANENT REFERENCE MONUMENT "LB 4318" (UNLESS OTHERWISE NOTED), (C)= PERMANENT CONTROL POINT "LB 4318", LME= LAKE MAINTENANCE EASEMENT, CL= CENTERLINE, LMAE= LAKE MAINTENANCE ACCESS EASEMENT, LWDD= LAKE WORTH DRAINAGE DISTRICT, CB= CHORD BEARING, CD= CHORD DISTANCE, PBC= PALM BEACH COUNTY

WATER MANAGEMENT TRACT No. 4



MATCHLINE SEE SHEET 20 OF 24



NICK MILLER, INC. Surveying & Mapping Consultants

Table with SHEET NO. 19, SCALE: 1" = 50', DATE: DECEMBER 2002, JOB NO. 1008.044, FILE: PHASE II