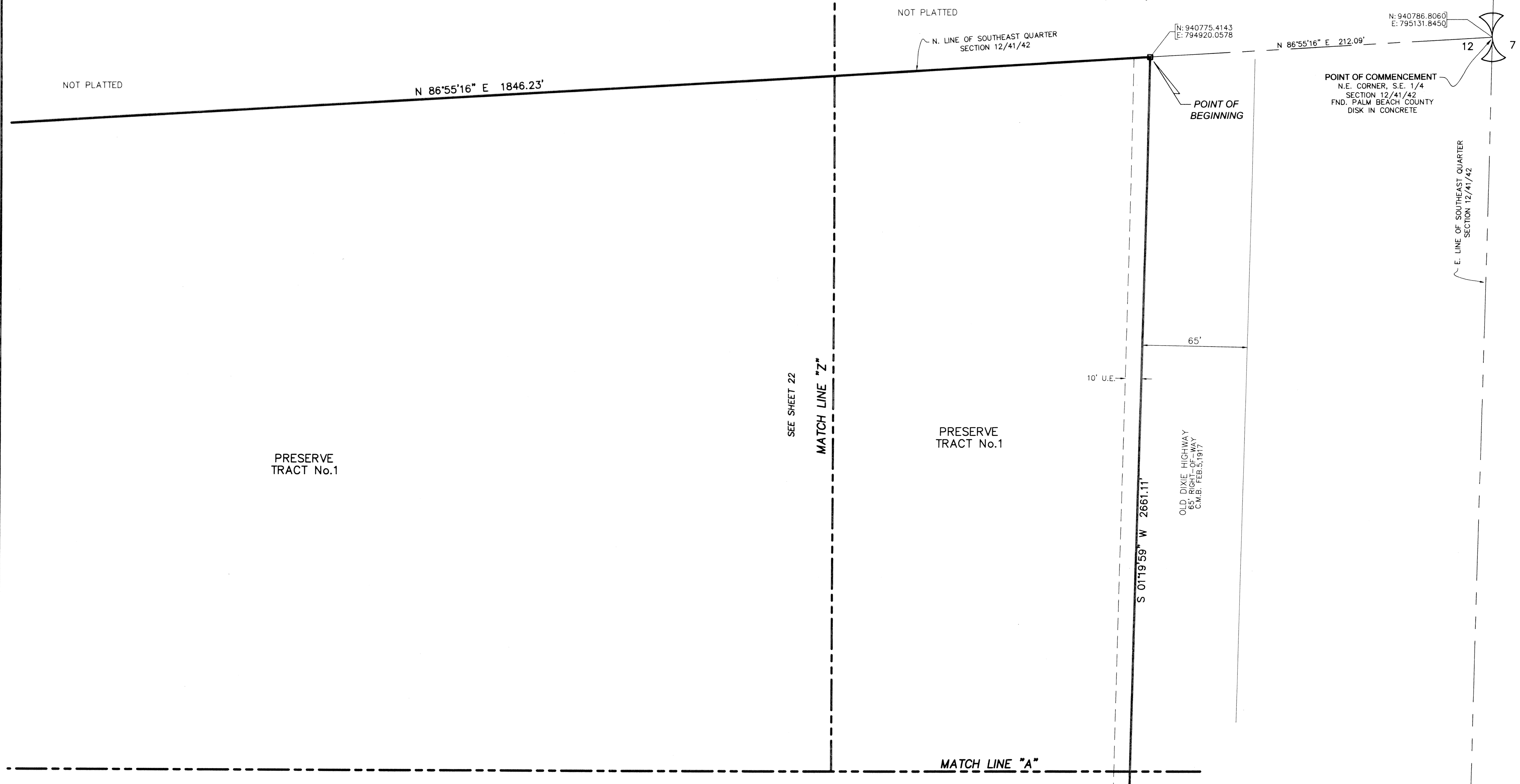
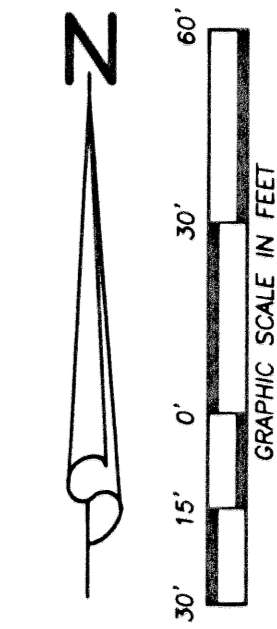
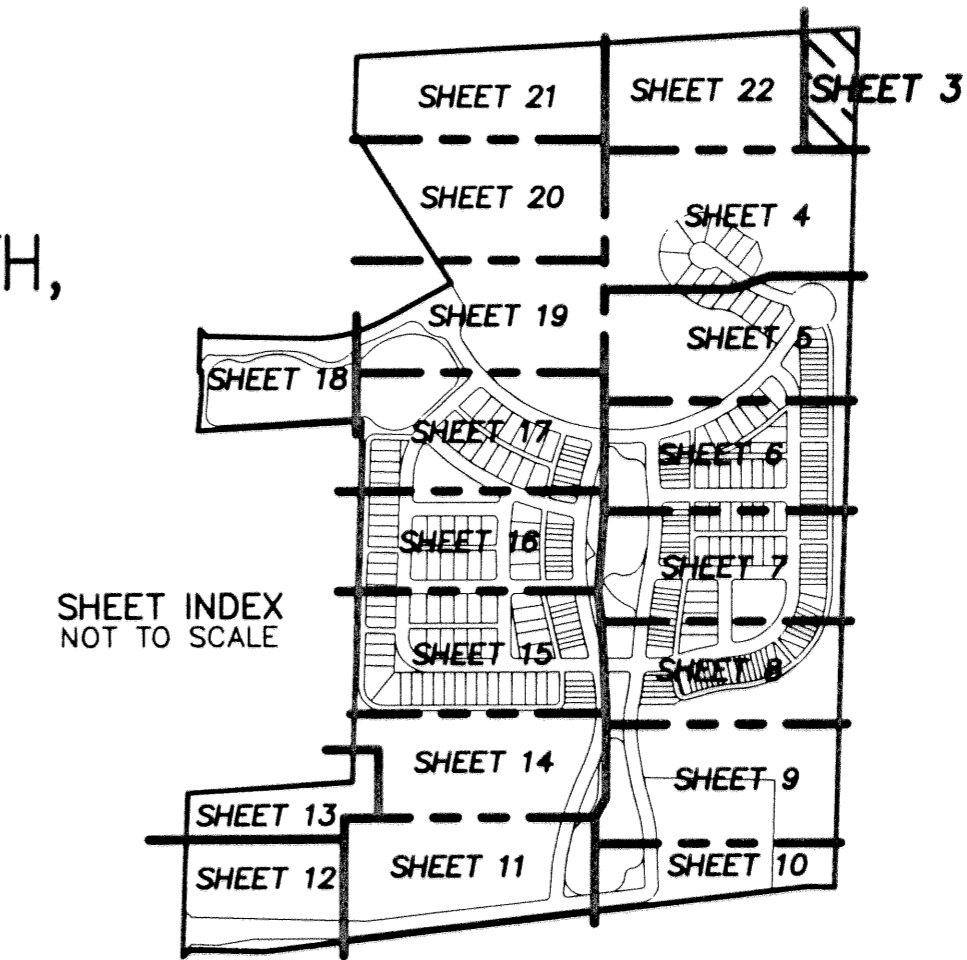


# BOTANICA

BEING A PARCEL OF LAND IN SECTION 12 AND 13, TOWNSHIP 41 SOUTH,  
RANGE 42 EAST, TOWN OF JUPITER, PALM BEACH COUNTY, FLORIDA.

JANUARY, 2003 SHEET 3 OF 22

30



**LIDBERG LAND SURVEYING, INC.**

675 West Indiantown Road, Suite 200,  
Jupiter, Florida 33458 TEL. 561-746-8454

CAD K:\AUTOCAD\98-150\1508-306.DWG	
REF K:\AUTOCAD\	
FLD B. D.	FB. 000 PG. 00
OFF W. D. J.	000 00
CKD W. D. J.	000 00
JOB 98-150-306	DATE 02-22-02
SHEET 3 OF 22	DWG D98-150P

AUTOCAD 98-150-1508-306.dwg 02/07/03 06:08:47 PM PM EST