

BOTANICA

BEING A PARCEL OF LAND IN SECTION 12 AND 13, TOWNSHIP 41 SOUTH,
RANGE 42 EAST, TOWN OF JUPITER, PALM BEACH COUNTY, FLORIDA.

JANUARY, 2003 SHEET 4 OF 22

SEE SHEET 22

SEE SHEET 3
MATCH LINE "A"

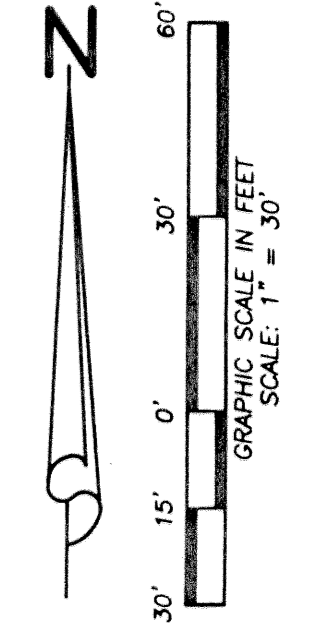
SEE SHEET 20

MATCH LINE "W"

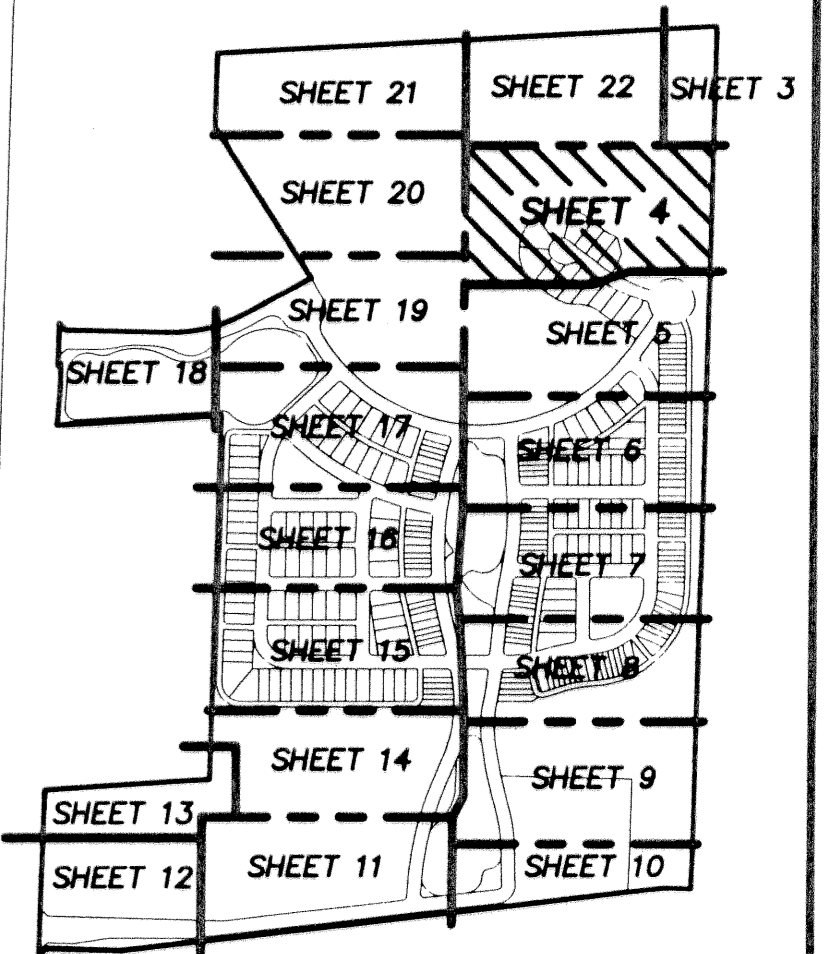
10' U.E.

882.74'

65'
OLD DIXIE HIGHWAY
65' RIGHT-OF-WAY
C.M.B. FEB. 5, 1917



PRESERVE
TRACT No.1



SHEET INDEX
NOT TO SCALE

PRESERVE
TRACT No.1

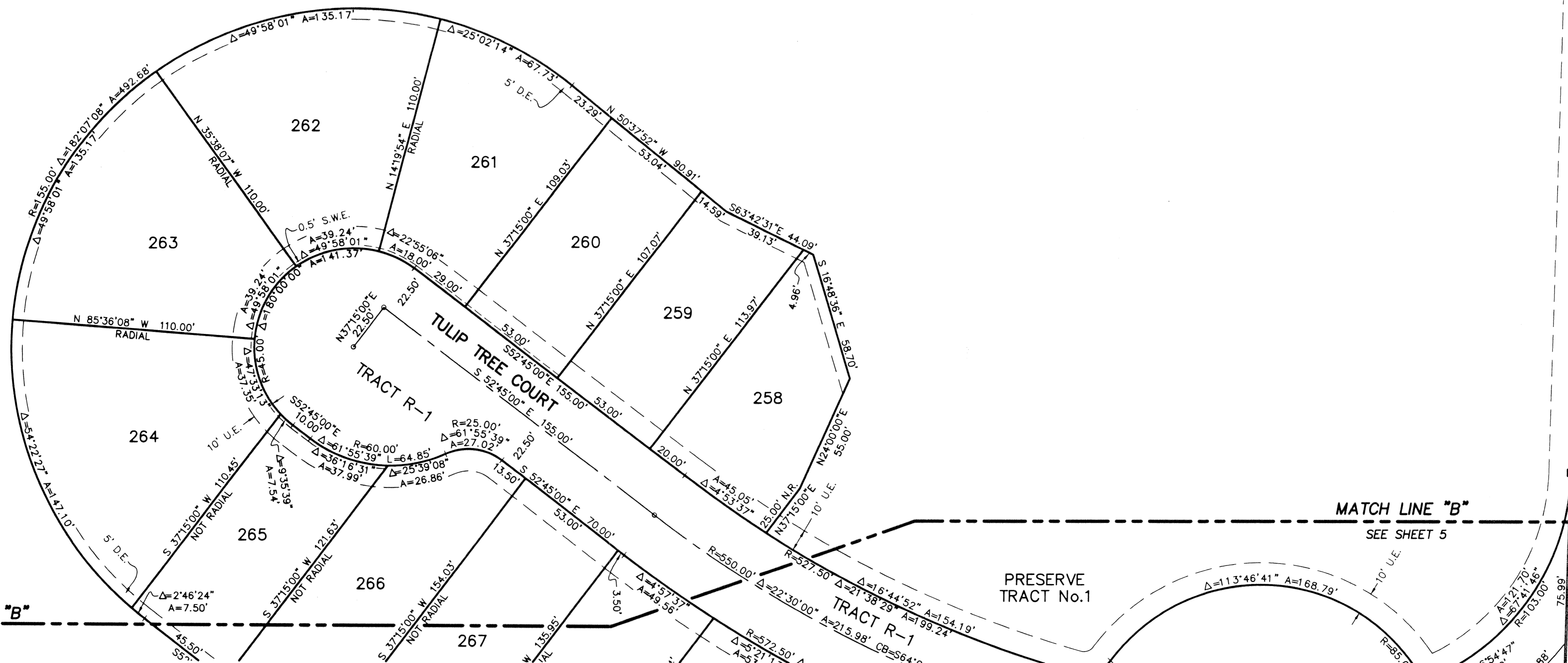
MATCH LINE "B"

SEE SHEET 5

MATCH LINE "B"
SEE SHEET 5

PRESERVE
TRACT No.1

SEE SHEET 19



LIDBERG LAND SURVEYING, INC.

675 West Indiantown Road, Suite 200,
Jupiter, Florida 33458 TEL. 561-746-8454

CAD	K:\AUTOCAD\98-150\1508-306.DWG		
REF	K:\AUTOCAD\		
FLD	B.D.	FB. 000	PG. 00
		000	00
OFF	W.D.J.	000	00
		000	00
CKD	W.D.J.	SHEET 4 OF 22	DWG D98-150P