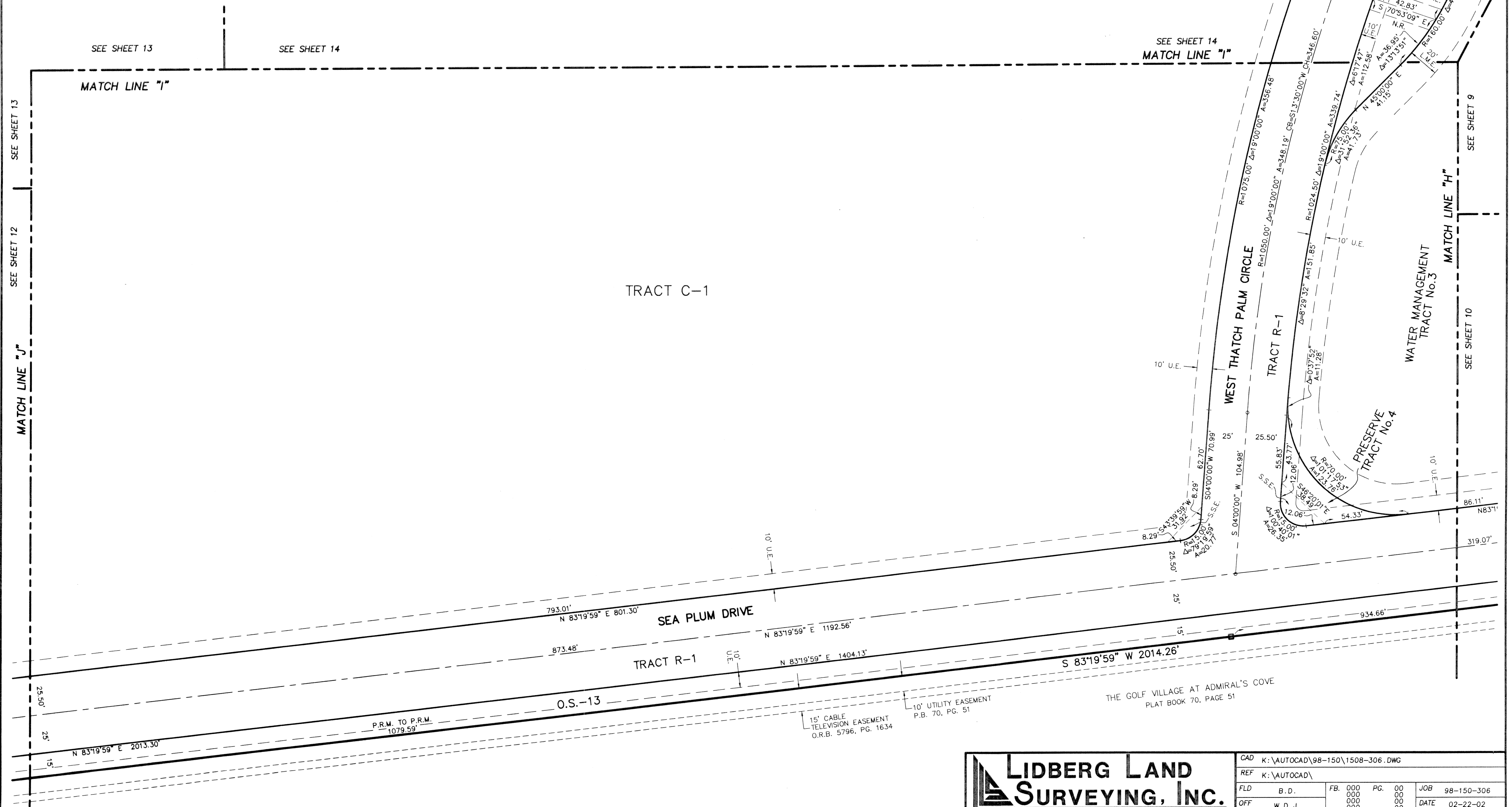
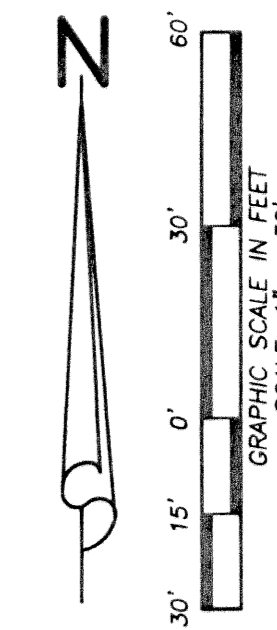
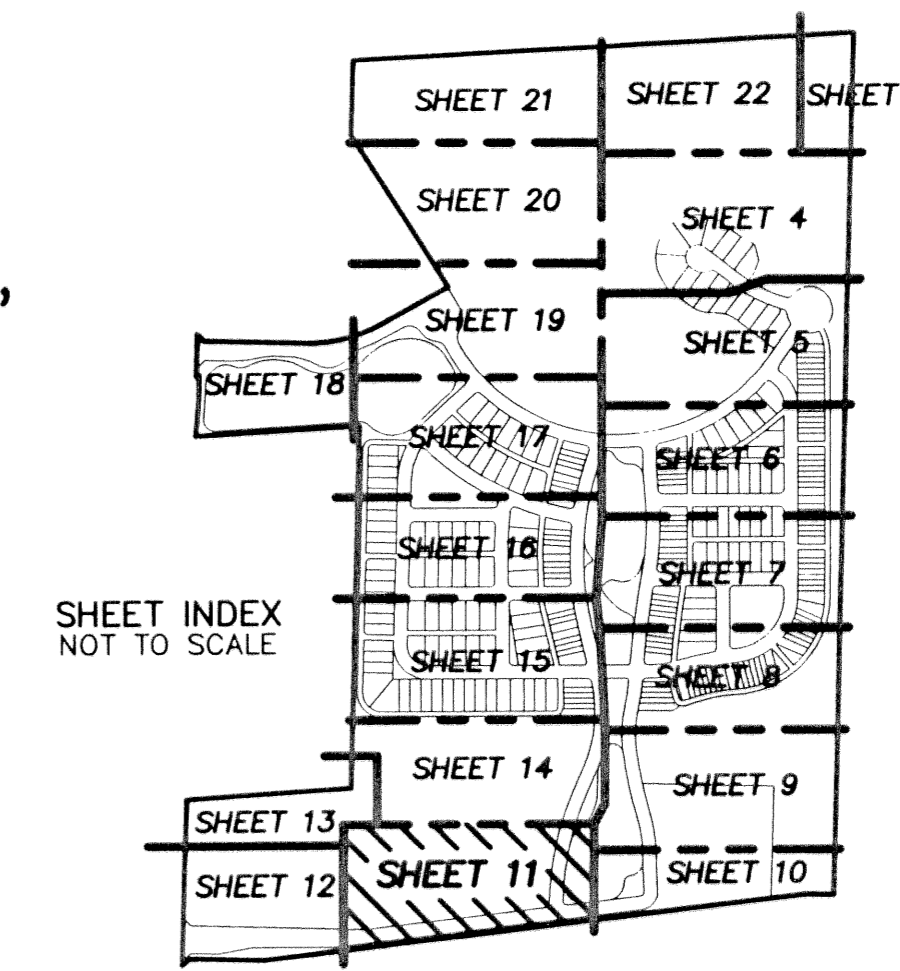


# BOTANICA

BEING A PARCEL OF LAND IN SECTION 12 AND 13, TOWNSHIP 41 SOUTH,  
RANGE 42 EAST, TOWN OF JUPITER, PALM BEACH COUNTY, FLORIDA.

JANUARY, 2003 SHEET 11 OF 22

38



**LIDBERG LAND SURVEYING, INC.**  
675 West Indiantown Road, Suite 200,  
Jupiter, Florida 33458 TEL. 561-746-8454

|     |                                |                |                |
|-----|--------------------------------|----------------|----------------|
| CAD | K:\AUTOCAD\98-150\1508-306.DWG |                |                |
| REF | K:\AUTOCAD\                    |                |                |
| FLD | B. D.                          | FB. 000 PG. 00 | JOB 98-150-306 |
| OFF | W. D. J.                       | 000 00         | DATE 02-22-02  |
| CKD | W. D. J.                       | SHEET 11 OF 22 | DWG D98-150P   |