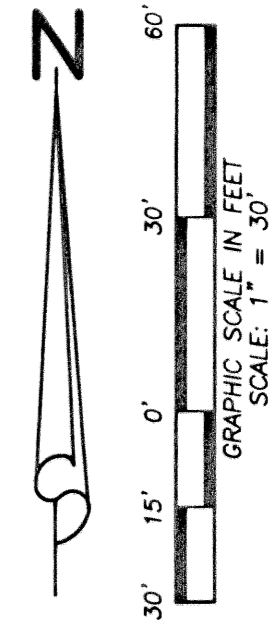
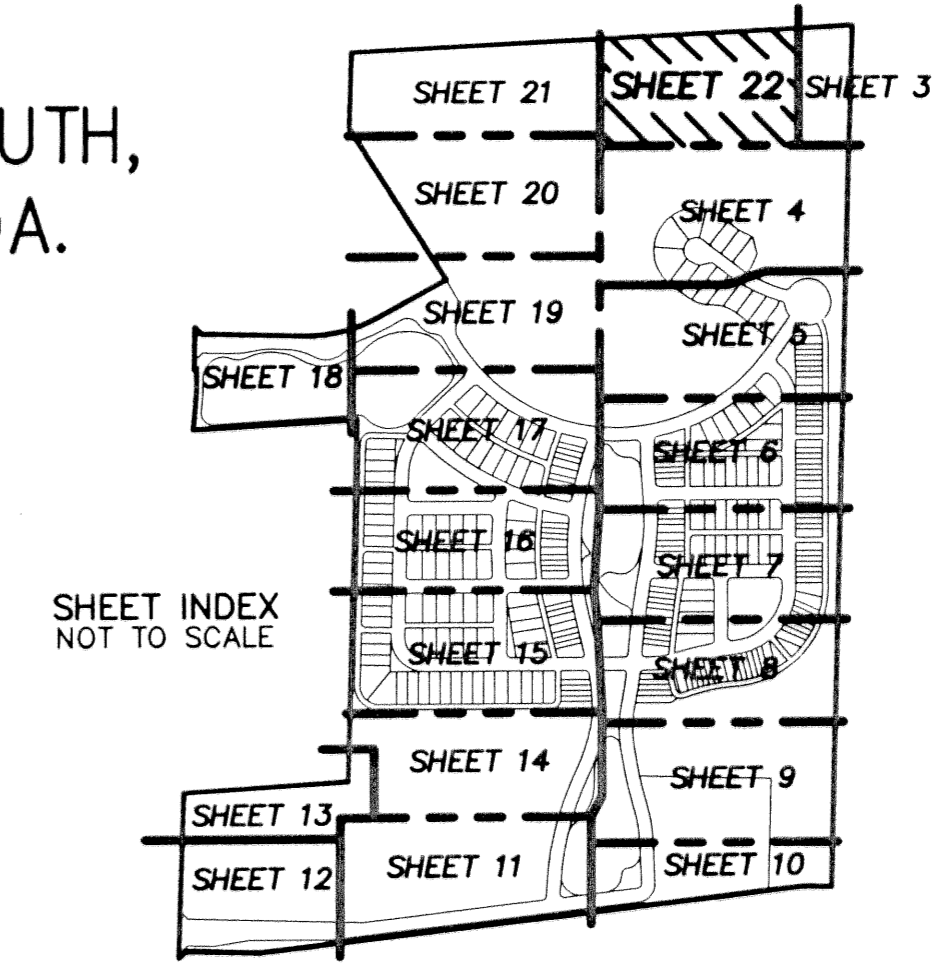


BOTANICA

BEING A PARCEL OF LAND IN SECTION 12 AND 13, TOWNSHIP 41 SOUTH,
RANGE 42 EAST, TOWN OF JUPITER, PALM BEACH COUNTY, FLORIDA.

JANUARY, 2003 SHEET 22 OF 22



NOT PLATTED

N. LINE OF SOUTHEAST QUARTER SECTION 12/41/42

NOT PLATTED

N 86°55'16" E 1846.23'

SEE SHEET 21

MATCH LINE "Y"

PRESERVE TRACT No.1

SEE SHEET 3

MATCH LINE "Z"

PRESERVE TRACT No.1

MATCH LINE "A"

SEE SHEET 4

LIDBERG LAND SURVEYING, INC.
 675 West Indiantown Road, Suite 200,
 Jupiter, Florida 33458 TEL. 561-746-8454

CAD	K:\AUTOCAD\98-150\1508-306.DWG			
REF	K:\AUTOCAD\			
FLD	B. D.	FB. 000	PG. 00	JOB 98-150-306
OFF	W. D. J.	000	00	DATE 02-22-02
CKD	W. D. J.	SHEET 22	OF 22	DWG D98-150P