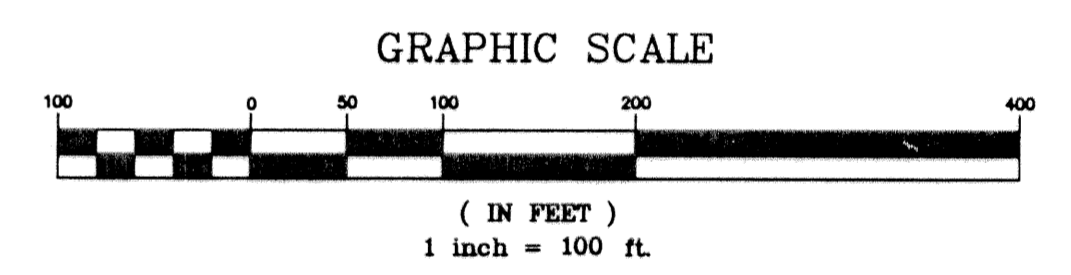
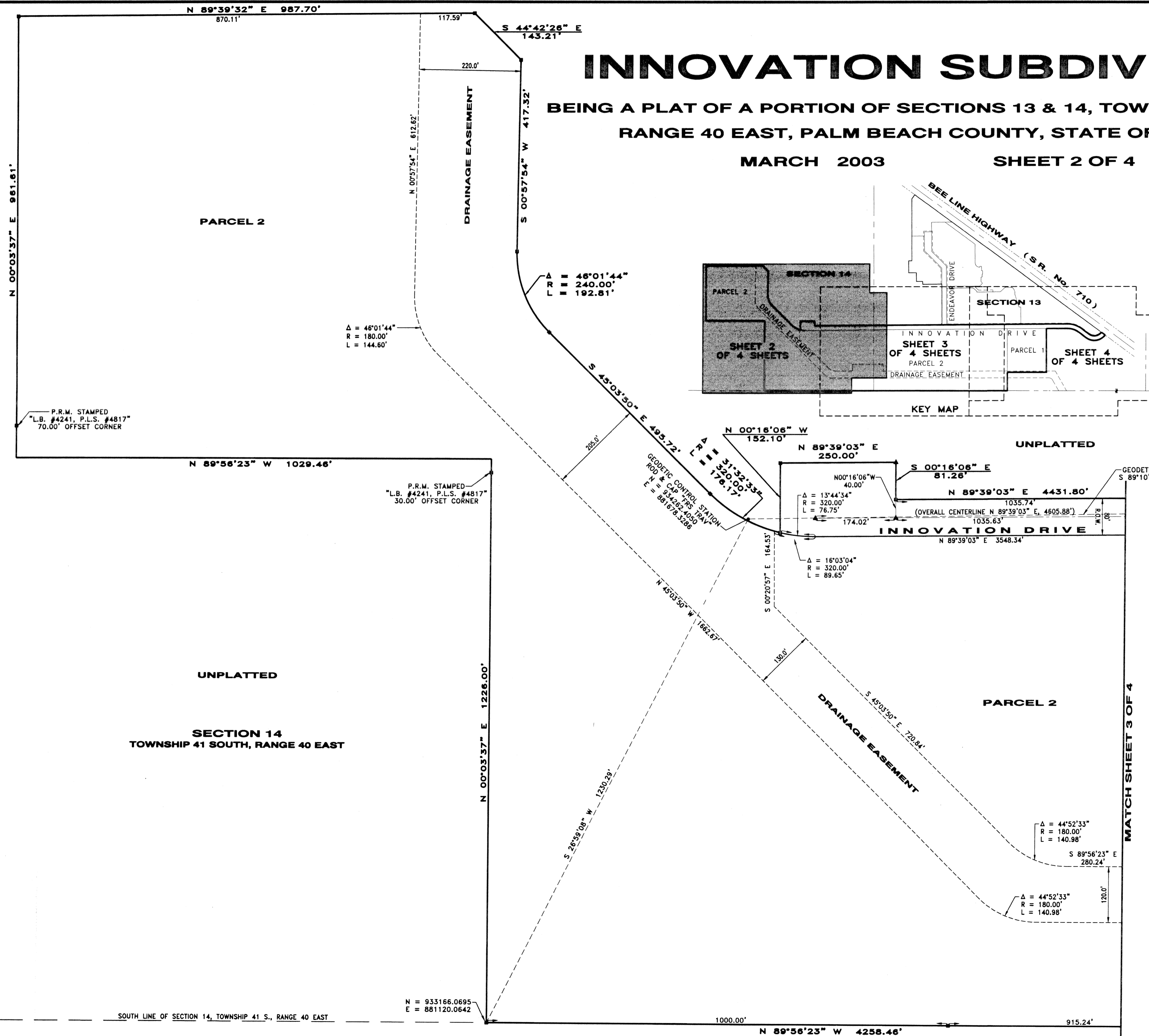


# INNOVATION SUBDIVISION

BEING A PLAT OF A PORTION OF SECTIONS 13 & 14, TOWNSHIP 41 SOUTH, RANGE 40 EAST, PALM BEACH COUNTY, STATE OF FLORIDA

MARCH 2003

SHEET 2 OF 4



### LEGEND

- P.B. = PLAT BOOK
- PG. = PAGE
- L = ARC LENGTH
- R = RADIUS
- Δ = DELTA
- P.S.M. = PROFESSIONAL SURVEYOR AND MAPPER
- P.B.C. = PALM BEACH COUNTY
- PLAT = DISTANCE ON RECORDED PLAT
- SURVEY = FIELD MEASUREMENT
- L.B. = LICENSED BUSINESS
- P.C.P. = PERMANENT CONTROL POINT
- R.O.W. = RIGHT-OF-WAY
- = PERMANENT REFERENCE MONUMENT (P.R.M.)  
CONCRETE MONUMENT STAMPED "L.B. #4241,  
PLS #4817"
- ▲ = PERMANENT CONTROL POINT (P.C.P.)  
NAIL AND BRASS DISK "LB #4241,  
PLS #4817"

SCALE FACTOR USED TO CONVERT FROM GROUND TO GRID= 1.00000086

THIS INSTRUMENT PREPARED BY GARY P. WILLIAMS IN THE OFFICES OF  
F.R.S. & ASSOCIATES INC., 901 NORTHPOINT PARKWAY, SUITE 301,  
WEST PALM BEACH, FLORIDA PHONE: (561) 478-7178

<b>F.R.S. &amp; ASSOCIATES, INC.</b> LAND SURVEYORS AND LAND PLANNERS CERTIFICATE OF AUTHORIZATION NO. LB 4241 901 NORTHPOINT PARKWAY, SUITE 301 WEST PALM BEACH, FLORIDA 33407-1953 PHONE (561) 478-7178 FAX (561) 478-7922		
SCALE: 1"=100'	DRAWN BY: T.C.M. FIELD BOOK	CADD REF.
DATE: 12/2002	APPR. BY: G.P.W. PW 1 & 2	INNOVATION SUBDIVISION SHEET 02.010
<b>INNOVATION SUBDIVISION</b> SECTIONS 13 & 14, TOWNSHIP 41 SOUTH, RANGE 40 EAST PALM BEACH COUNTY, FLORIDA		JOB NUMBER: <b>D 2K-021D</b> SHEET 2 OF 4

SUBDIVISION INNOVATION SUBDIVISION  
 BOOK 98  
 FLOOD ZONE B  
 QUAD # 86  
 SE  
 TAZ 822  
 FUD NAME

P.R.M. STAMPED  
"L.B. #4241, P.L.S. #4817"  
70.00' OFFSET CORNER

P.R.M. STAMPED  
"L.B. #4241, P.L.S. #4817"  
30.00' OFFSET CORNER

UNPLATTED  
SECTION 14  
TOWNSHIP 41 SOUTH, RANGE 40 EAST

SOUTH LINE OF SECTION 14, TOWNSHIP 41 S., RANGE 40 EAST

N = 933166.0695  
E = 881120.0642

Δ = 46°01'44"  
R = 240.00'  
L = 192.81'

Δ = 46°01'44"  
R = 180.00'  
L = 144.60'

GEODETIC CONTROL STATION  
ROD & CAP TIPS TRV  
N = 947024030  
E = 8816783286

Δ = 13°44'34"  
R = 320.00'  
L = 76.75'

Δ = 16°03'04"  
R = 320.00'  
L = 89.65'

Δ = 44°52'33"  
R = 180.00'  
L = 140.98'

Δ = 44°52'33"  
R = 180.00'  
L = 140.98'