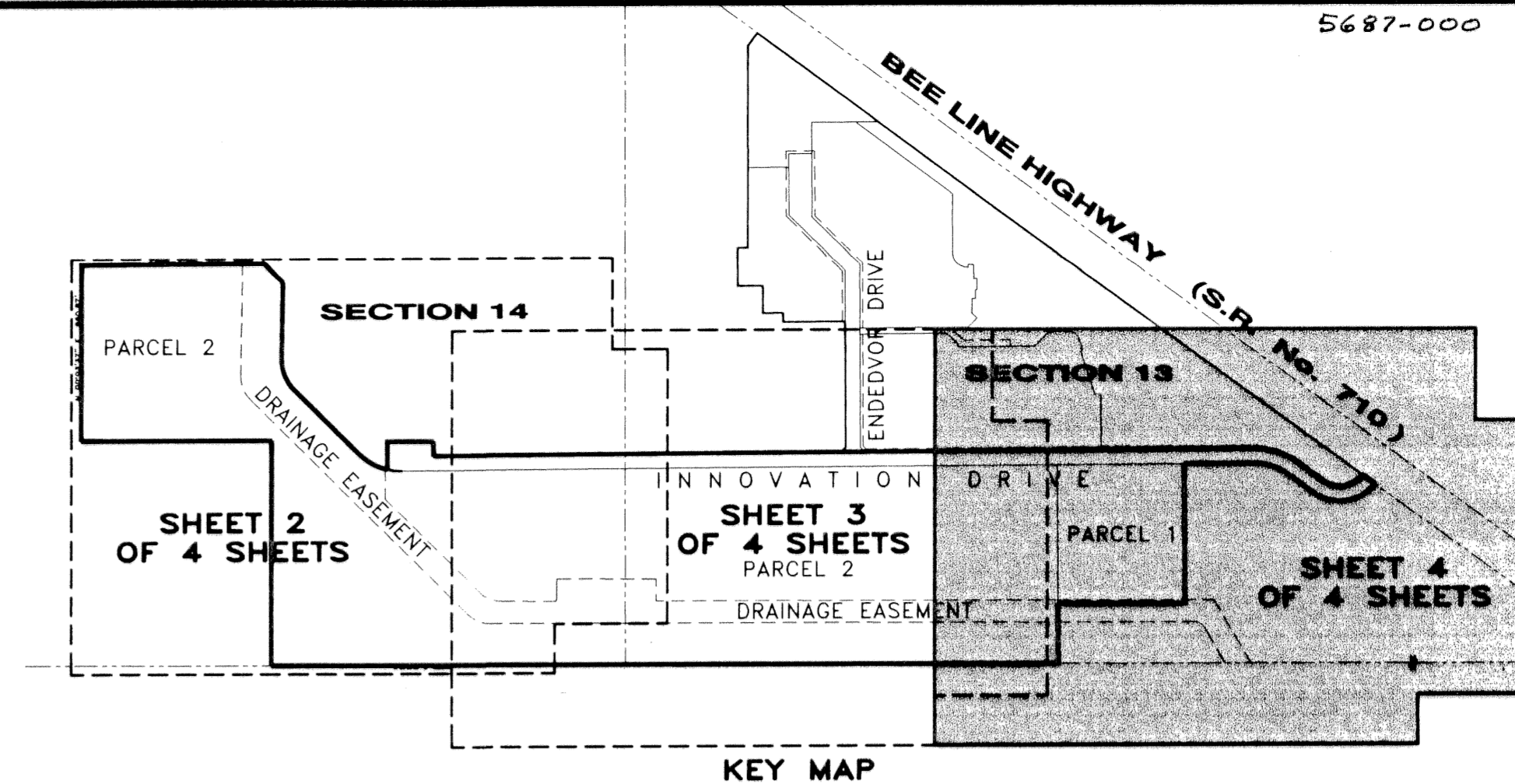


INNOVATION SUBDIVISION

BEING A PLAT OF A PORTION OF SECTIONS 13 & 14, TOWNSHIP 41 SOUTH,
 RANGE 40 EAST, PALM BEACH COUNTY, STATE OF FLORIDA

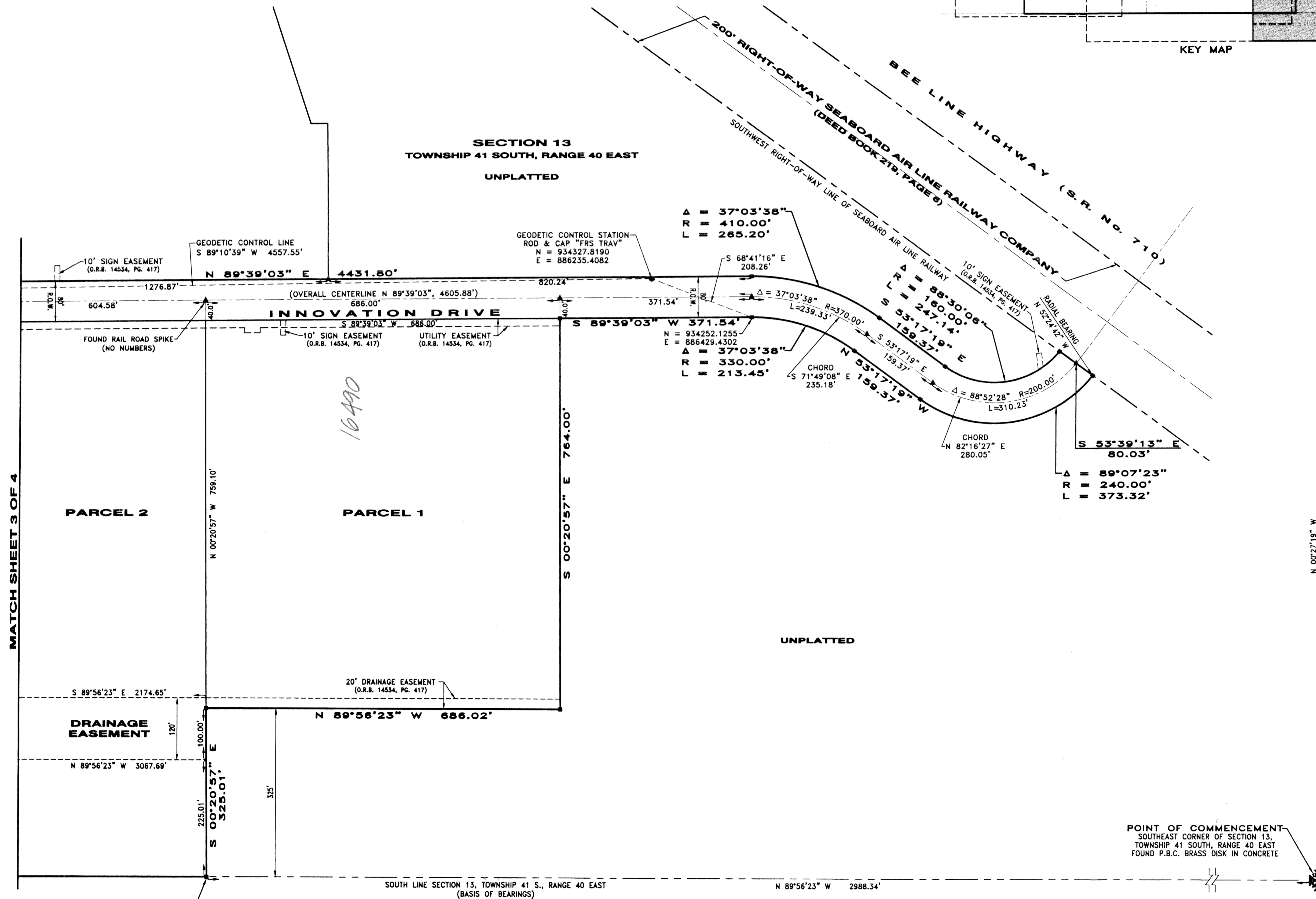
MARCH 2003

SHEET 4 OF 4



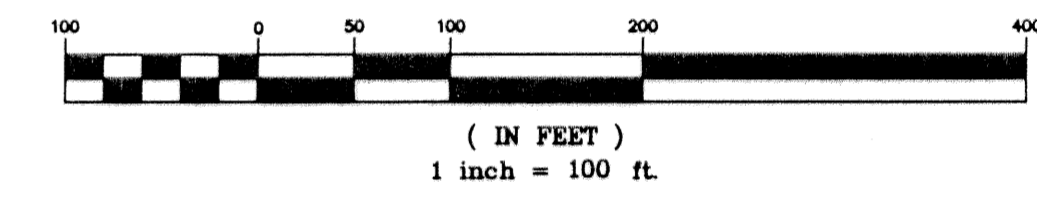
5687-000

53



MATCH SHEET 3 OF 4

GRAPHIC SCALE

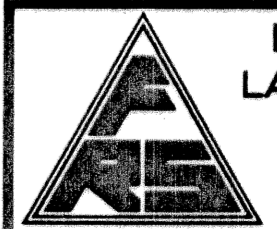


LEGEND

- P.B. = PLAT BOOK
- PG. = PAGE
- L = ARC LENGTH
- R = RADIUS
- Δ = DELTA
- P.S.M. = PROFESSIONAL SURVEYOR AND MAPPER
- P.B.C. = PALM BEACH COUNTY
- PLAT = DISTANCE ON RECORDED PLAT
- SURVEY = FIELD MEASUREMENT
- L.B. = LICENSED BUSINESS
- P.C.P. = PERMANENT CONTROL POINT
- R.O.W. = RIGHT-OF-WAY
- = PERMANENT REFERENCE MONUMENT (P.R.M.) CONCRETE MONUMENT STAMPED "L.B. #4241, PLS #4817"
- ▲ = PERMANENT CONTROL POINT (P.C.P.) NAIL AND BRASS DISK "LB #4241, PLS #4817"

SCALE FACTOR USED TO CONVERT FROM GROUND TO GRID = 1.00000086

THIS INSTRUMENT PREPARED BY GARY P. WILLIAMS IN THE OFFICES OF F.R.S. & ASSOCIATES INC., 901 NORTHPOINT PARKWAY, SUITE 301, WEST PALM BEACH, FLORIDA PHONE: (561) 478-7178



F.R.S. & ASSOCIATES, INC.
 LAND SURVEYORS AND LAND PLANNERS
 CERTIFICATE OF AUTHORIZATION NO. LB 4241
 901 NORTHPOINT PARKWAY, SUITE 301
 WEST PALM BEACH, FLORIDA 33407-1953
 PHONE (561) 478-7178 FAX (561) 478-7922

SCALE: 1"=100'	DRAWN BY: T.C.M. FIELD BOOK	CADD REF.
DATE: 12/2002	APPR. BY: G.P.W. PW 1 & 2	INNOVATION SUBDIVISION SHEET 4 OF 4
INNOVATION SUBDIVISION		JOB NUMBER:
SECTIONS 13 & 14, TOWNSHIP 41 SOUTH, RANGE 40 EAST		D 2K-021D
PALM BEACH COUNTY, FLORIDA		SHEET 4 OF 4

SUBDIVISION INNOVATION SUBDIVISION
 BOOK 98 PAGE 53
 FLOOD ZONE B
 QUAD # 86
 SE
 TAZ 822
 PUB NAME 3347B