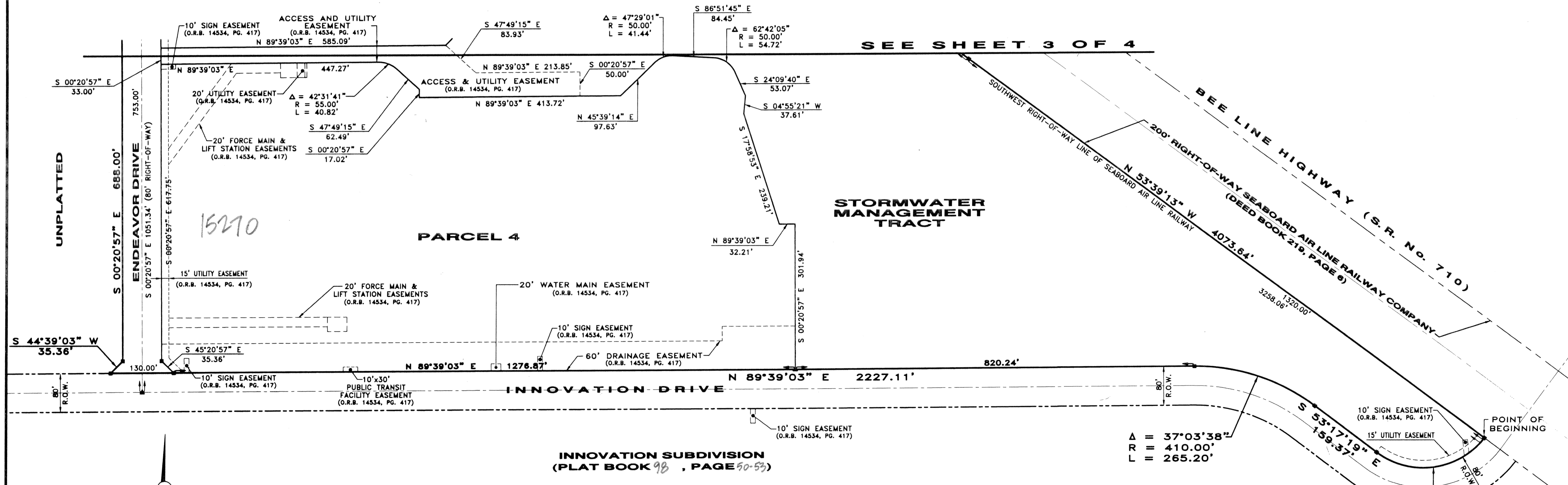
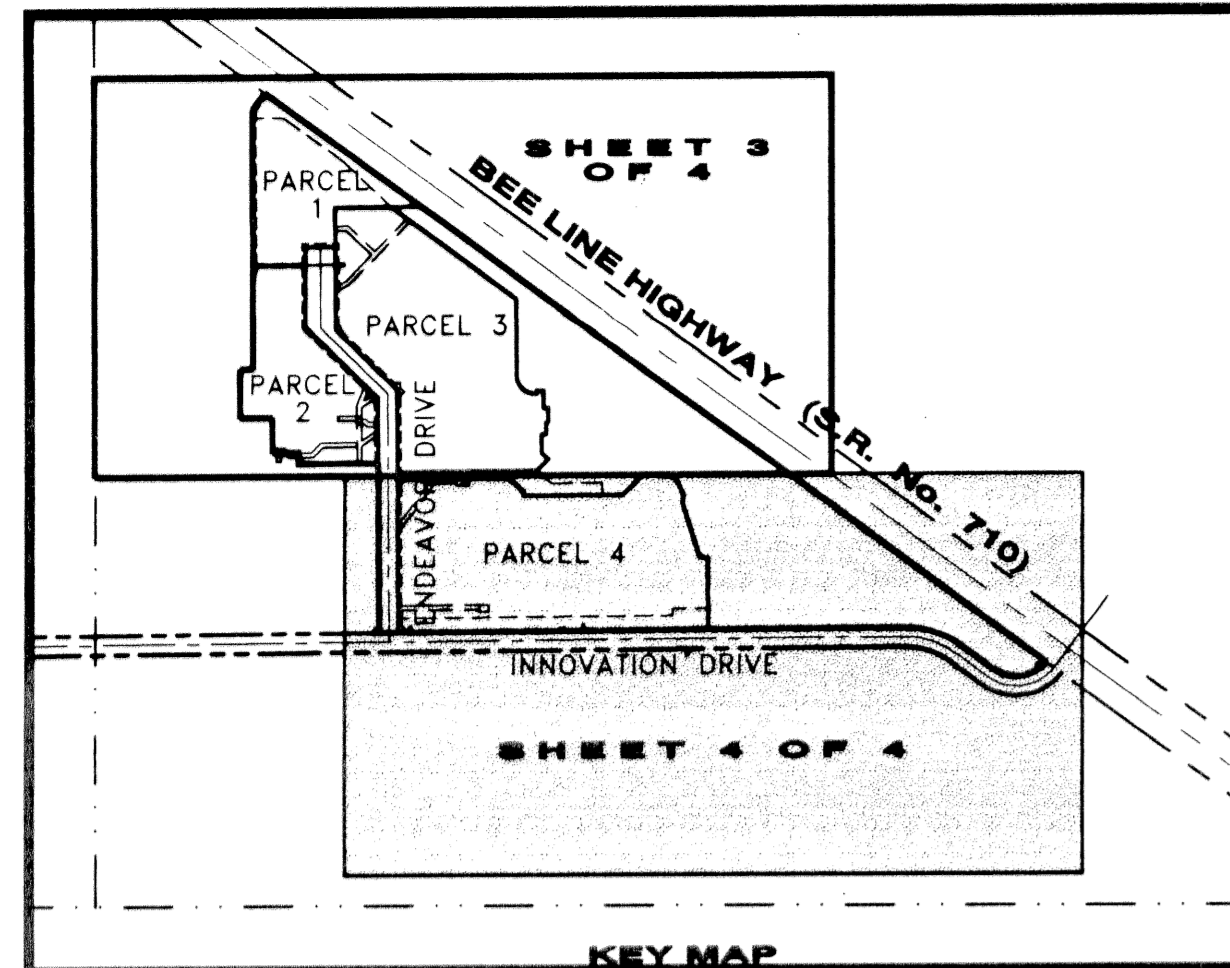


BLACKBIRD SUBDIVISION

BEING A PLAT OF A PORTION OF SECTION 13, TOWNSHIP 41 SOUTH,
RANGE 40 EAST, PALM BEACH COUNTY, STATE OF FLORIDA

MARCH 2003

SHEET 4 OF 4



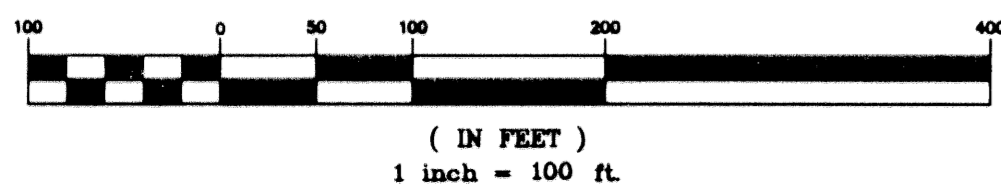
LEGEND

- P.B. = PLAT BOOK
- PG. = PAGE
- L = ARC LENGTH
- R = RADIUS
- Δ = DELTA
- P.S.M. = PROFESSIONAL SURVEYOR AND MAPPER
- PLAT = DISTANCE ON RECORDED PLAT
- SURVEY = FIELD MEASUREMENT
- L.B. = LICENSED BUSINESS
- P.C.P. = PERMANENT CONTROL POINT
- R.O.W. = RIGHT-OF-WAY
- = PERMANENT REFERENCE MONUMENT (P.R.M.) CONCRETE MONUMENT STAMPED "L.B. #4241, PLS #4817"
- △ = PERMANENT CONTROL POINT (P.C.P.) NAIL AND BRASS DISK "LB #4241, PLS #4817"

SCALE FACTOR USED TO CONVERT FROM GROUND TO GRID= 1.00000139



GRAPHIC SCALE



SUBDIVISION BLACKBIRD SUBDIVISION
 BOOK 98 PAGE 57 FLOOD MAP # 50 B
 FLOOD ZONE B ZONING MAP #
 QUAD # 86 ZIP CODE 33478
 SE TAZ 022
 PUD NAME

F.R.S. & ASSOCIATES, INC.
 LAND SURVEYORS AND LAND PLANNERS
 CERTIFICATE OF AUTHORIZATION NO. LB 4241
 901 NORTHPOINT PARKWAY, SUITE 301
 WEST PALM BEACH, FLORIDA 33407-1953
 PHONE (561) 478-7178 FAX (561) 478-7922

SCALE: 1"= 100'	DRAWN BY: T.C.M. FIELD BOOK	CADD REF.
DATE: 12/2002	APPR. BY: G.P.W. PW 1 & 2	DATE: 12/2002
BLACKBIRD SUBDIVISION		JOB NUMBER:
SECTIONS 13, TOWNSHIP 41 SOUTH, RANGE 40 EAST		D 2K-021D
PALM BEACH COUNTY, FLORIDA		SHEET 4 OF 4

THIS INSTRUMENT PREPARED BY GARY P. WILLIAMS IN THE OFFICES OF
 F.R.S. & ASSOCIATES, INC., 901 NORTHPOINT PARKWAY, SUITE 301,
 WEST PALM BEACH, FLORIDA PHONE: (561) 478-7178