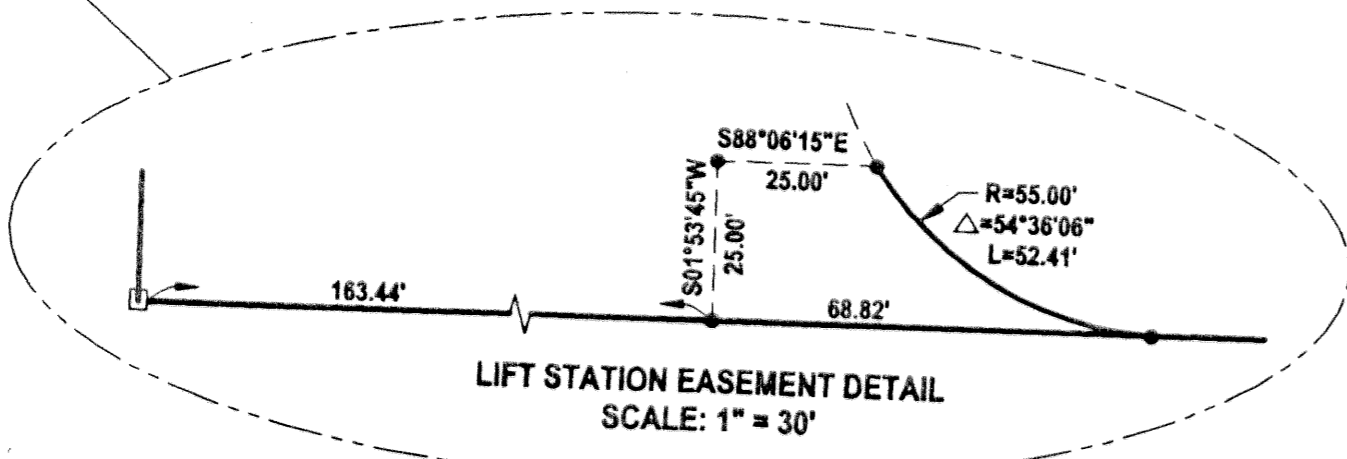
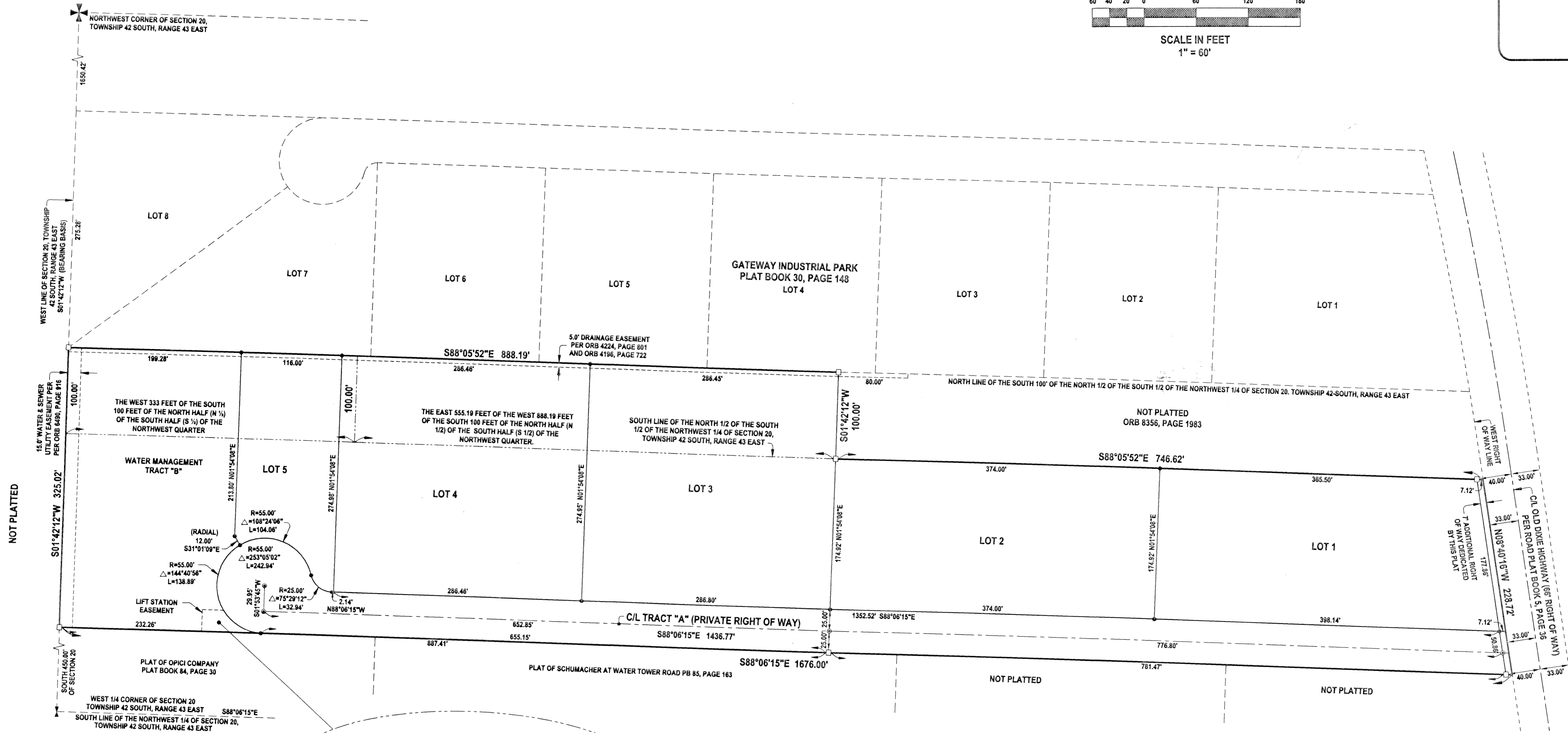
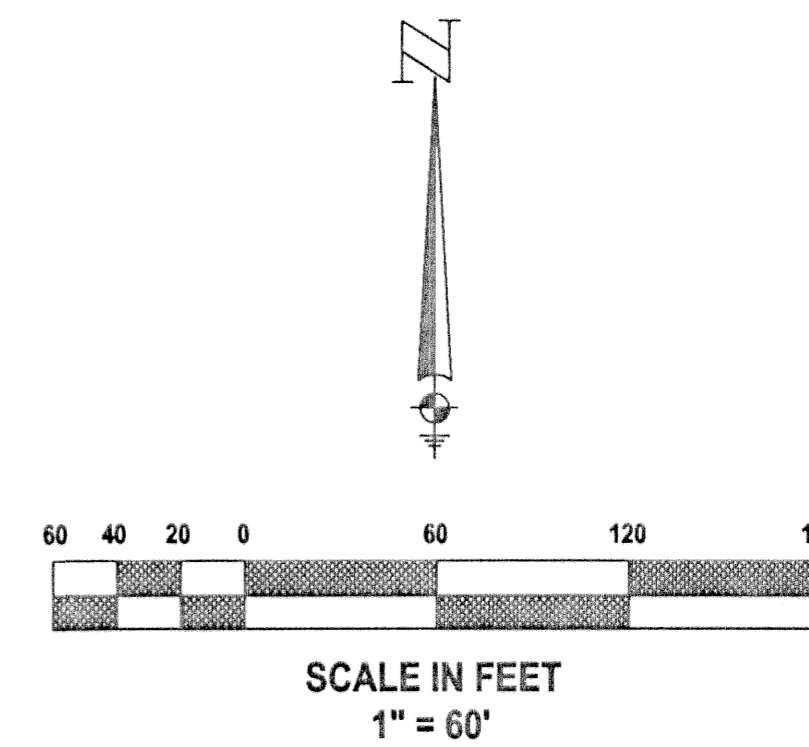


1100 COMMERCE PARK

BEING A PORTION OF THE NORTHWEST QUARTER OF SECTION 20, TOWNSHIP 42 SOUTH, RANGE 43 EAST, TOWN OF LAKE PARK PALM BEACH COUNTY, FLORIDA

MARCH, 2003

SHEET 2 OF 2



LEGEND AND ABBREVIATIONS

- L.B. = Licensed Business
- C/L = Centerline
- ORB = Official Record Book
- POA = Property Owners Association
- S.R. = State Road
- R = Radius
- Δ = Delta
- L = Length
- NGVD = National Geodetic Vertical Datum
- FEMA = Federal Emergency Management Agency
- ⊙ = Set (P.C.P.) Permanent Control Point
P.K. & Disk Stamped "PRM LB 4165"
- = Set (P.R.M.) Permanent Reference Monument
4" X 4" Concrete Monument with a P.K. & Disk Stamped "PRM LB 4165"
- = Set 5/8" Iron Rod & Cap Stamped "LB 4165"

THIS INSTRUMENT WAS PREPARED BY DONALD D. DANIELS IN THE OFFICES OF DONALD D. DANIELS, INC.

<p>DONALD D. DANIELS, INC. Consulting Surveyors & Mappers</p>	1100 COMMERCE PARK	
	Florida Certificate LB No. 4165 725 North A-1-A, Suite C-111 Jupiter, Florida 33477 Tel: (561) 747-8884	REFERENCE: 20/42/43 OFFICE: DAO CHECKED: