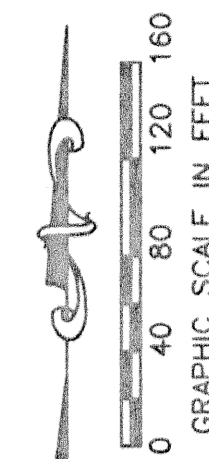


MATCH LINE - SEE SHEET 9

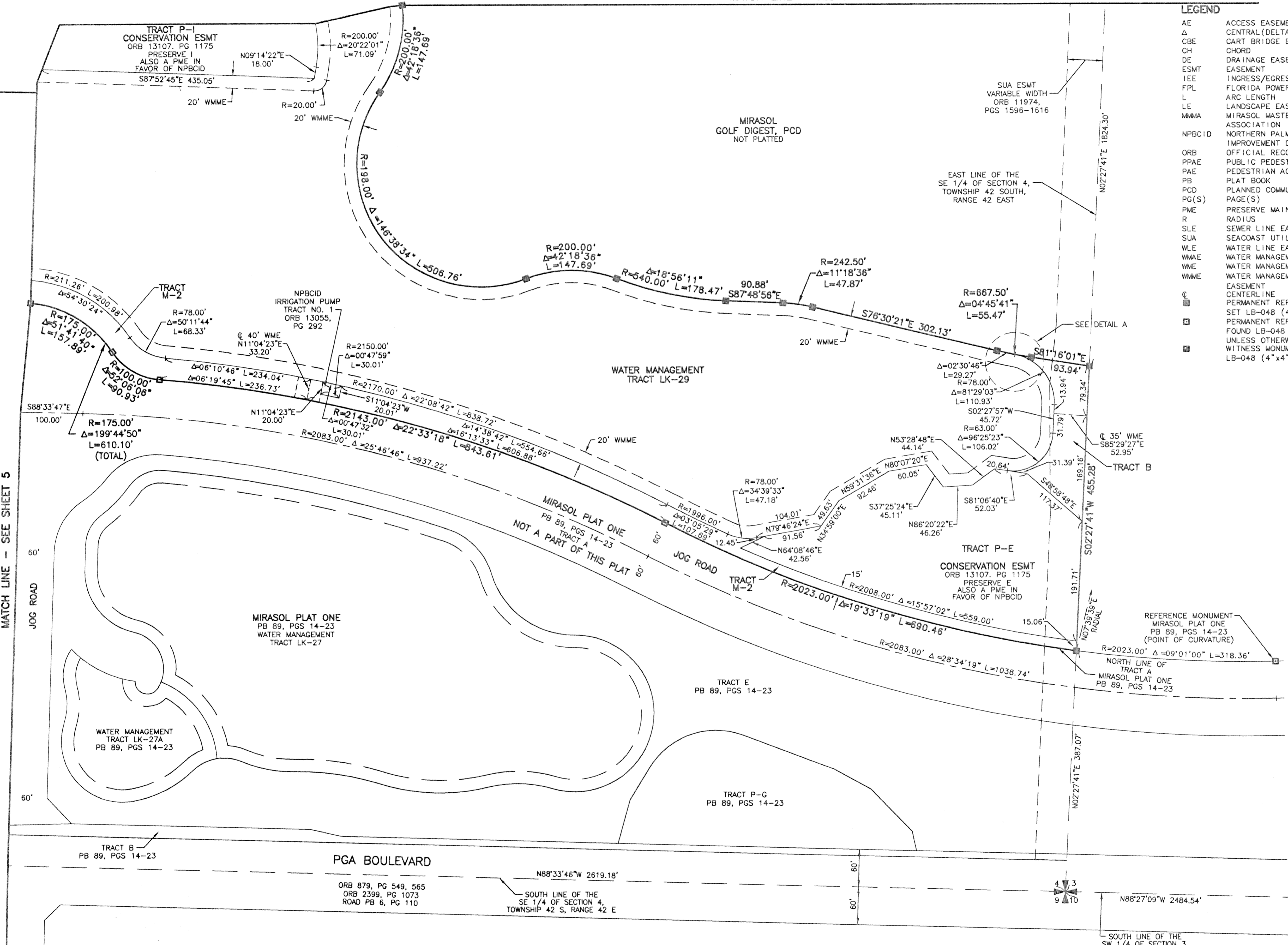
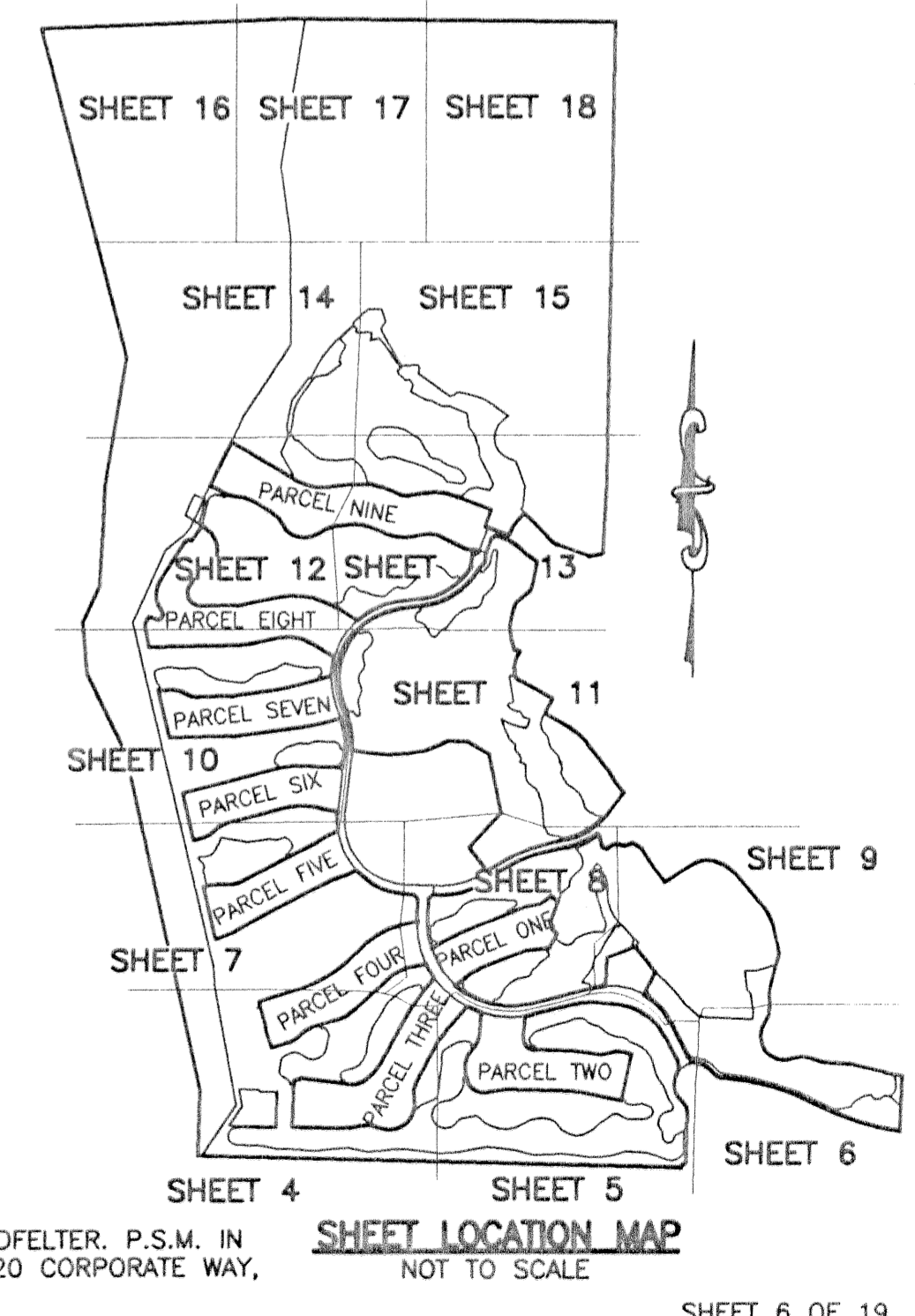
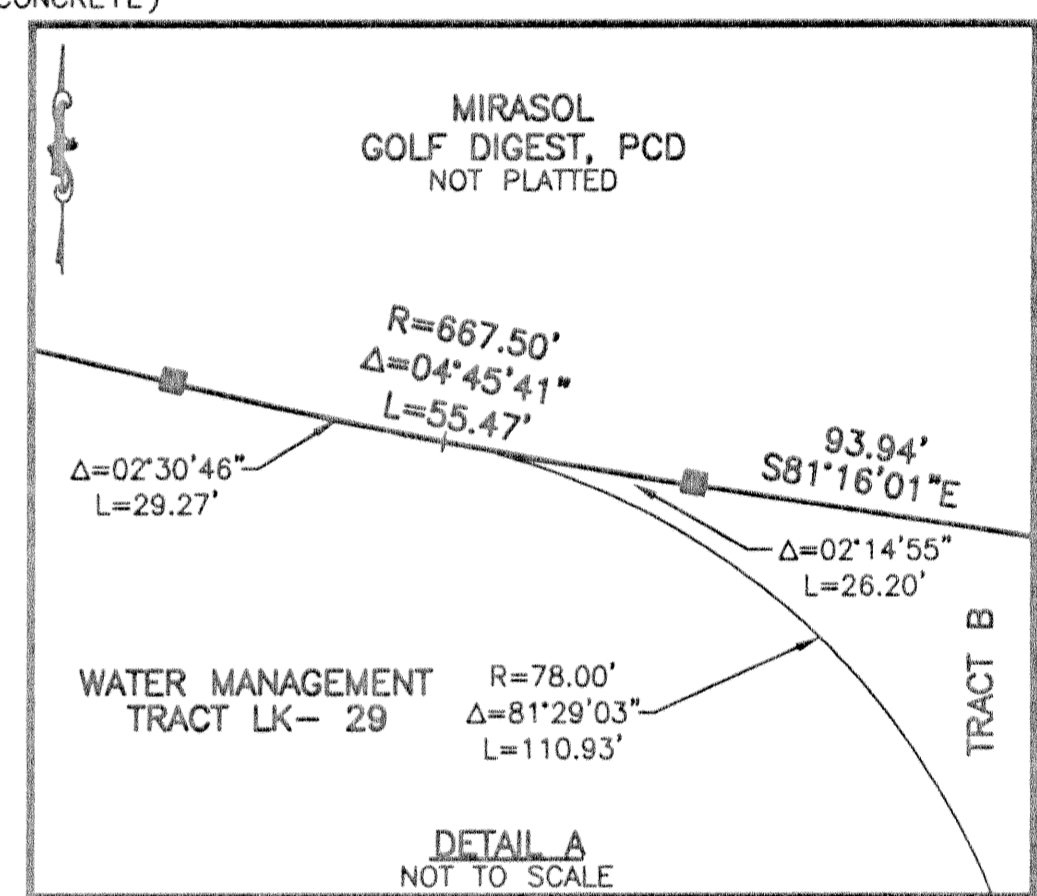


STATE OF FLORIDA
 COUNTY OF PALM BEACH
 THIS PLAT WAS FILED FOR
 RECORD _____ DAY OF _____
 AD, 2003 AND DULY RECORDED
 IN PLAT BOOK _____ ON PAGE(S)
 _____ THROUGH _____
 DOROTHY H. WILKEN, CLERK
 BY: _____, D.C.

CIRCUIT COURT SEAL

LEGEND

AE	ACCESS EASEMENT
Δ	CENTRAL (DELTA) ANGLE
CBE	CART BRIDGE EASEMENT
CH	CHORD
DE	DRAINAGE EASEMENT
ESMT	EASEMENT
IEE	INGRESS/EGRESS EASEMENT
FPL	FLORIDA POWER AND LIGHT
L	ARC LENGTH
LE	LANDSCAPE EASEMENT
MWMA	MIRASOL MASTER MAINTENANCE ASSOCIATION
NPBCID	NORTHERN PALM BEACH COUNTY IMPROVEMENT DISTRICT
ORB	OFFICIAL RECORD BOOK
PPAE	PUBLIC PEDESTRIAN ACCESS EASEMENT
PAE	PEDESTRIAN ACCESS EASEMENT
PB	PLAT BOOK
PCD	PLANNED COMMUNITY DEVELOPMENT PAGE(S)
PG(S)	PAGE(S)
PME	PRESERVE MAINTENANCE EASEMENT
R	RADIUS
SLE	SEWER LINE EASEMENT
SUA	SEACOAST UTILITY AUTHORITY
WLE	WATER LINE EASEMENT
WMAE	WATER MANAGEMENT ACCESS EASEMENT
WME	WATER MANAGEMENT EASEMENT
WMME	WATER MANAGEMENT MAINTENANCE EASEMENT
⊙	CENTERLINE
■	PERMANENT REFERENCE MONUMENT
□	SET LB-048 (4"X4" CONCRETE)
□	PERMANENT REFERENCE MONUMENT FOUND LB-048 (4"X4" CONCRETE)
□	UNLESS OTHERWISE NOTED WITNESS MONUMENT SET LB-048 (4"X4" CONCRETE)



MIRASOL PLAT FIVE

PART OF GOLF DIGEST P.C.D.
 BEING IN SECTIONS 32 AND 33, TOWNSHIP 41 SOUTH, RANGE 42 EAST,
 AND SECTIONS 04 AND 05, TOWNSHIP 42 SOUTH, RANGE 42 EAST,
 CITY OF PALM BEACH GARDENS, PALM BEACH COUNTY, FLORIDA
 SHEET 6 OF 19

THIS INSTRUMENT WAS PREPARED BY MARY HANNA CLODFELTER, P.S.M. IN THE OFFICES OF MOCK, ROOS & ASSOCIATES, INC., 5720 CORPORATE WAY, WEST PALM BEACH, FLORIDA 33407.

SCALE: 1" = 80'	FLORIDA L.B. NO. 48
P.A. NO.: 99367.00	
DATE: MAY, 2002	
DRAWING NO. 41-42-32-59	
5720 Corporate Way, West Palm Beach, Florida 33407 (561) 663-3113, fax 478-7248	

MIRASOL PLAT FIVE
 PART OF GOLF DIGEST P.C.D.
 BEING IN SECTIONS 32 AND 33,
 TOWNSHIP 41 SOUTH, RANGE 42 EAST,
 AND IN SECTIONS 04 AND 05,
 TOWNSHIP 42 SOUTH, RANGE 42 EAST,
 CITY OF PALM BEACH GARDENS,
 PALM BEACH COUNTY, FLORIDA

S:\Data\12\gcp5\5\gcp5rp02.dwg 12/23/2002 5:20:44 PM EST
 REV.: 12-23-02
 CAD FILE:
 TAYLOR\GCP5RP02