

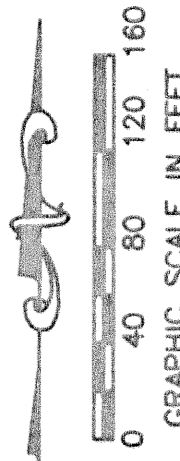
STATE OF FLORIDA
COUNTY OF PALM BEACH

THIS PLAT WAS FILED FOR
RECORD _____ DAY OF _____
AD, 2003 AND DULY RECORDED
IN PLAT BOOK _____ ON PAGES
_____ THROUGH _____

DOROTHY H. WILKEN, CLERK
BY: _____, D.C.

CIRCUIT COURT SEAL

- LEGEND**
- AE ACCESS EASEMENT
 - CAE CENTRAL (DELTA) ANGLE
 - CBE CART BRIDGE EASEMENT
 - CH CHORD
 - DE DRAINAGE EASEMENT
 - ESMT EASEMENT
 - IEE INGRESS/EGRESS EASEMENT
 - FPL FLORIDA POWER AND LIGHT
 - LE ARC LENGTH
 - LEE LANDSCAPE EASEMENT
 - MMA MIRASOL MASTER MAINTENANCE ASSOCIATION
 - NPBCID NORTHERN PALM BEACH COUNTY IMPROVEMENT DISTRICT
 - ORB OFFICIAL RECORD BOOK
 - PPAE PUBLIC PEDESTRIAN ACCESS EASEMENT
 - PBE PEDESTRIAN ACCESS EASEMENT
 - PB PLAT BOOK
 - PCD PLANNED COMMUNITY DEVELOPMENT
 - PG(S) PAGE(S)
 - PME PRESERVE MAINTENANCE EASEMENT
 - R RADIUS
 - SLE SEWER LINE EASEMENT
 - SUA SEACOAST UTILITY AUTHORITY
 - WLE WATER LINE EASEMENT
 - WMAE WATER MANAGEMENT ACCESS EASEMENT
 - WME WATER MANAGEMENT EASEMENT
 - WMME WATER MANAGEMENT MAINTENANCE EASEMENT
 - CE CENTER LINE
 - PM PERMANENT REFERENCE MONUMENT SET LB-048 (4"x4" CONCRETE)
 - PF PERMANENT REFERENCE MONUMENT FOUND LB-048 (4"x4" CONCRETE)
 - UNLESS OTHERWISE NOTED WITNESS MONUMENT SET LB-048 (4"x4" CONCRETE)



MATCH LINE - SEE SHEET 12

MIRASOL PARCEL EIGHT
PB 92, PGS 62-65
NOT A PART OF THIS PLAT

TRACT GC-11
ALSO A WMAE IN
FAVOR OF NPBCID

WATER MANAGEMENT
TRACT LK-39

MIRASOL PARCEL SEVEN
PB 95, PGS 10-13
NOT A PART OF THIS PLAT

WATER MANAGEMENT
TRACT LK-42

TRACT GC-10
ALSO A WMAE IN
FAVOR OF NPBCID

WATER MANAGEMENT
TRACT LK-38

MIRASOL PARCEL SIX
PB 95, PGS 57-60
NOT A PART OF THIS PLAT

TRACT GC-6
ALSO A WMAE IN
FAVOR OF NPBCID

MIRASOL PLAT FIVE

PART OF GOLF DIGEST P.C.D.
BEING IN SECTIONS 32 AND 33, TOWNSHIP 41 SOUTH, RANGE 42 EAST,
AND SECTIONS 04 AND 05, TOWNSHIP 42 SOUTH, RANGE 42 EAST,
CITY OF PALM BEACH GARDENS, PALM BEACH COUNTY, FLORIDA
SHEET 10 OF 19

THIS INSTRUMENT WAS PREPARED BY MARY HANNA CLODFELTER, P.S.M. IN
THE OFFICES OF WOCK, ROOS & ASSOCIATES, INC., 5720 CORPORATE WAY,
WEST PALM BEACH, FLORIDA 33407.

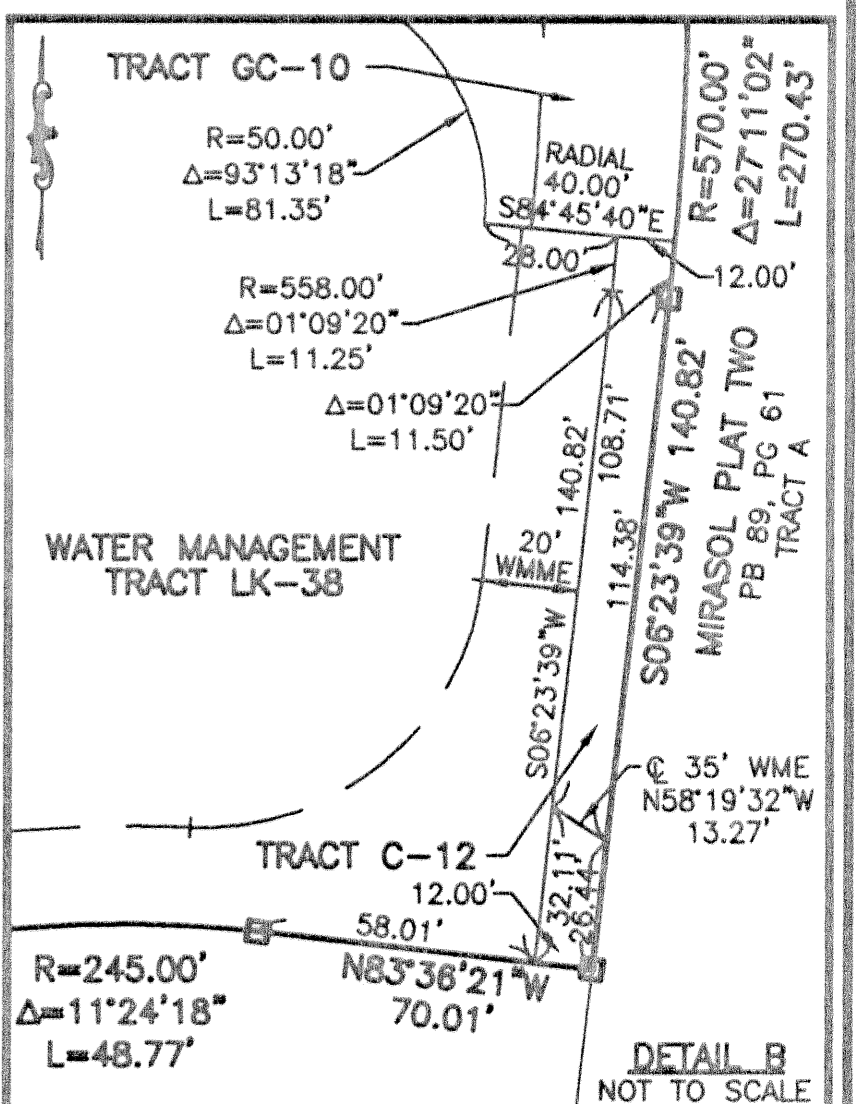
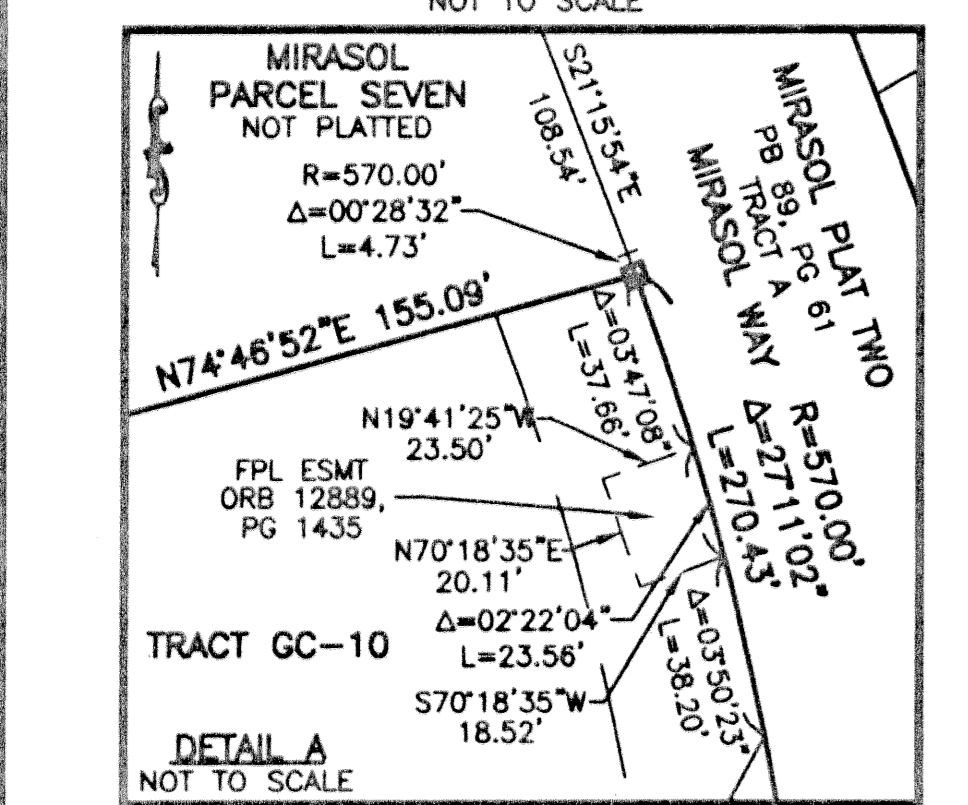
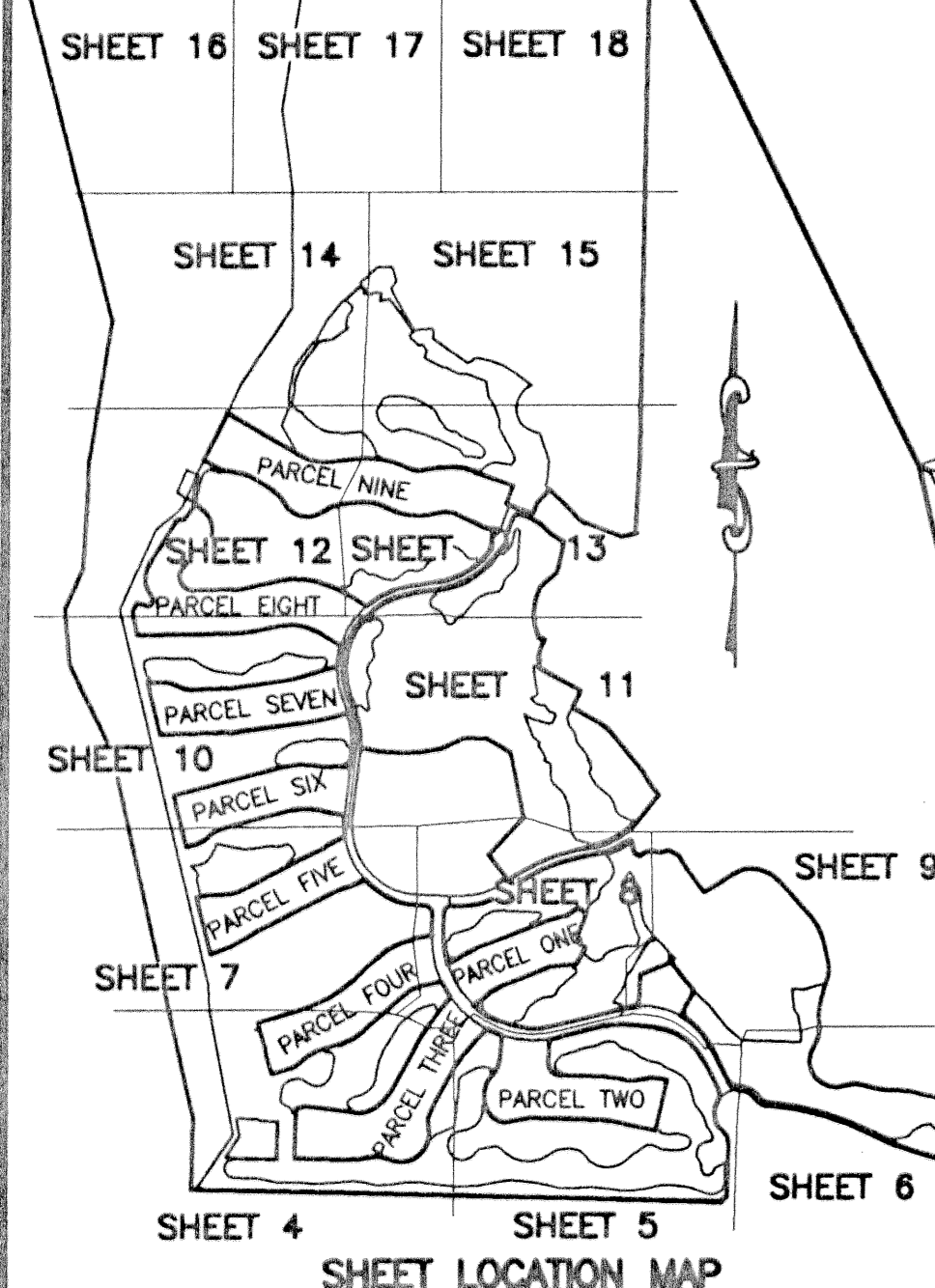
SCALE:
1" = 80'
P.A. NO.:
99367.00
DATE:
MAY, 2002
DRAWING NO.
41-42-32-59

FLORIDA L.B. NO. 48

MOCK ROOS
ENGINEERS & PLANNERS

5720 Corporate Way, West Palm Beach, Florida 33407
(561) 663-3113, fax 478-7248

SHEET 10 OF 19
MIRASOL PLAT FIVE
PART OF GOLF DIGEST P.C.D.
BEING IN SECTIONS 32 AND 33,
TOWNSHIP 41 SOUTH, RANGE 42 EAST,
AND IN SECTIONS 04 AND 05,
TOWNSHIP 42 SOUTH, RANGE 42 EAST,
CITY OF PALM BEACH GARDENS,
PALM BEACH COUNTY, FLORIDA



REV.: 12-23-02
CAD FILE:
TAYLORP5\GCP5RPO2