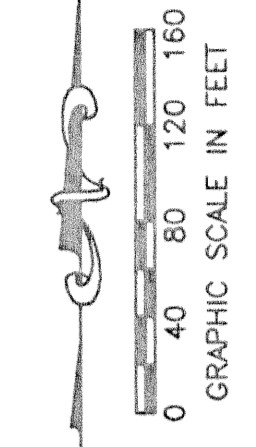
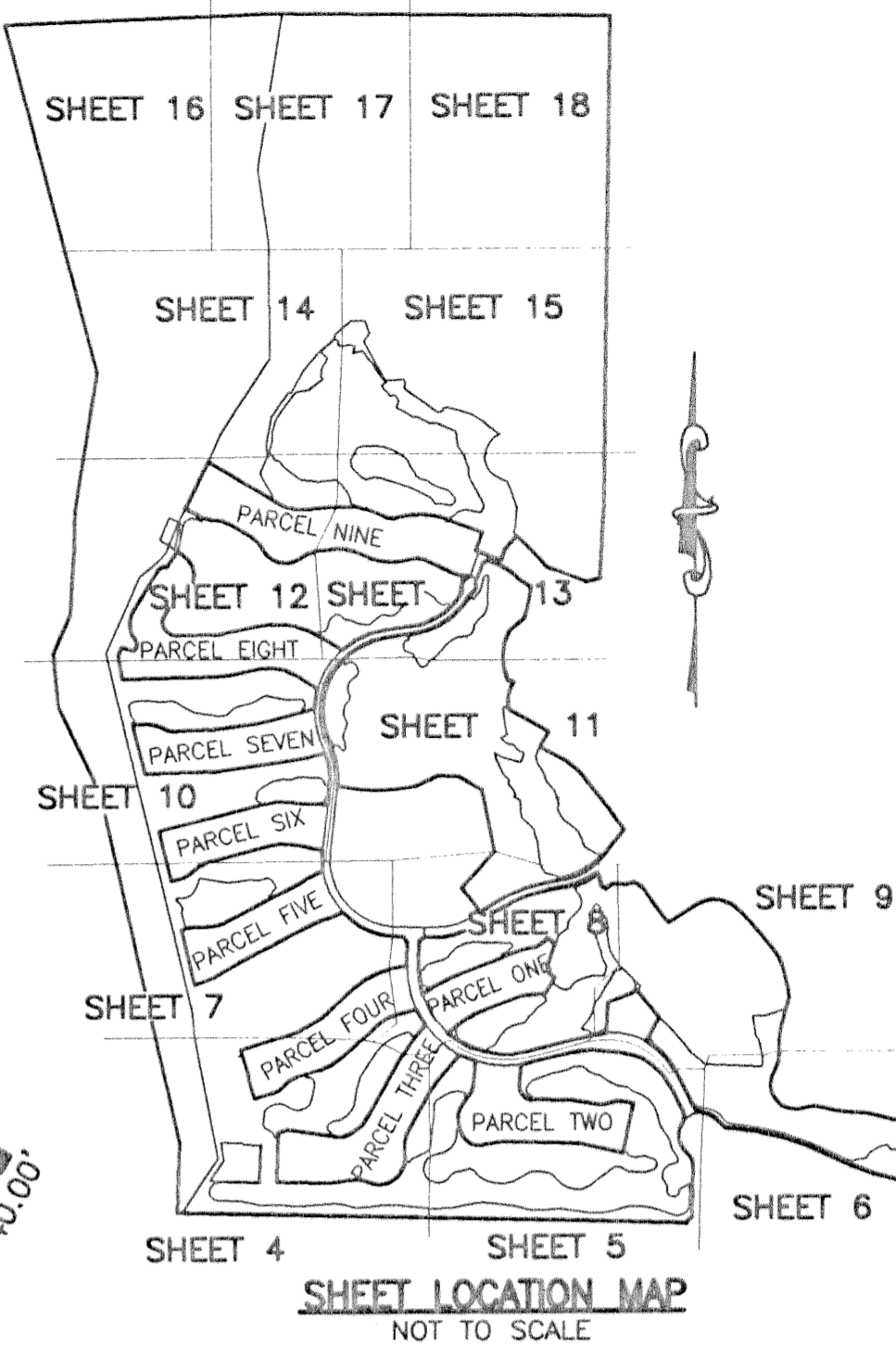


STATE OF FLORIDA
COUNTY OF PALM BEACH
THIS PLAT WAS FILED FOR
RECORD
THIS DAY OF
AD, 2003 AND DULY RECORDED
IN PLAT BOOK THROUGH ON PAGES
BY: DOROTHY H. WILKEN, CLERK
D.C.



LEGEND

- AE ACCESS EASEMENT
- Δ CENTRAL (DELTA) ANGLE
- CBE CART BRIDGE EASEMENT
- CH CHORD
- DE DRAINAGE EASEMENT
- ESMT EASEMENT
- IEE INGRESS/EGRESS EASEMENT
- FPL FLORIDA POWER AND LIGHT
- L ARC LENGTH
- LE LANDSCAPE EASEMENT
- MMA MIRASOL MASTER MAINTENANCE ASSOCIATION
- NPBCID NORTHERN PALM BEACH COUNTY IMPROVEMENT DISTRICT
- ORB OFFICIAL RECORD BOOK
- PPAE PUBLIC PEDESTRIAN ACCESS EASEMENT
- PAE PEDESTRIAN ACCESS EASEMENT
- PB PLAT BOOK
- PCD PLANNED COMMUNITY DEVELOPMENT PAGE(S)
- PME PRESERVE MAINTENANCE EASEMENT
- R RADIUS
- SLE SEWER LINE EASEMENT
- SUA SEACOAST UTILITY AUTHORITY
- WLE WATER LINE EASEMENT
- WMAE WATER MANAGEMENT ACCESS EASEMENT
- WME WATER MANAGEMENT EASEMENT
- WMME WATER MANAGEMENT MAINTENANCE EASEMENT
- ⊙ CENTERLINE
- ⊠ PERMANENT REFERENCE MONUMENT
- ⊡ SET LB-04B (4"x4" CONCRETE)
- ⊞ PERMANENT REFERENCE MONUMENT FOUND LB-04B (4"x4" CONCRETE)
- UNLESS OTHERWISE NOTED WITNESS MONUMENT SET LB-04B (4"x4" CONCRETE)



MATCH LINE - SEE SHEET 13

MATCH LINE - SEE SHEET 8

MIRASOL PLAT FIVE

PART OF GOLF DIGEST P.C.D.
BEING IN SECTIONS 32 AND 33, TOWNSHIP 41 SOUTH, RANGE 42 EAST,
AND SECTIONS 04 AND 05, TOWNSHIP 42 SOUTH, RANGE 42 EAST,
CITY OF PALM BEACH GARDENS, PALM BEACH COUNTY, FLORIDA
SHEET 11 OF 19

CURVE	RADIUS	CENTRAL ANGLE	ARC LENGTH
C12	570.00'	24°01'40"	239.04'
C14	549.00'	24°16'33"	232.61'

THIS INSTRUMENT WAS PREPARED BY MARY HANNA CLODFELTER, P.S.M. IN THE OFFICES OF MOCK, ROOS & ASSOCIATES, INC., 5720 CORPORATE WAY, WEST PALM BEACH, FLORIDA 33407.

SCALE: 1" = 80'
P.A. NO.: 99367.00
DATE: MAY, 2002
DRAWING NO.: 41-42-32-59

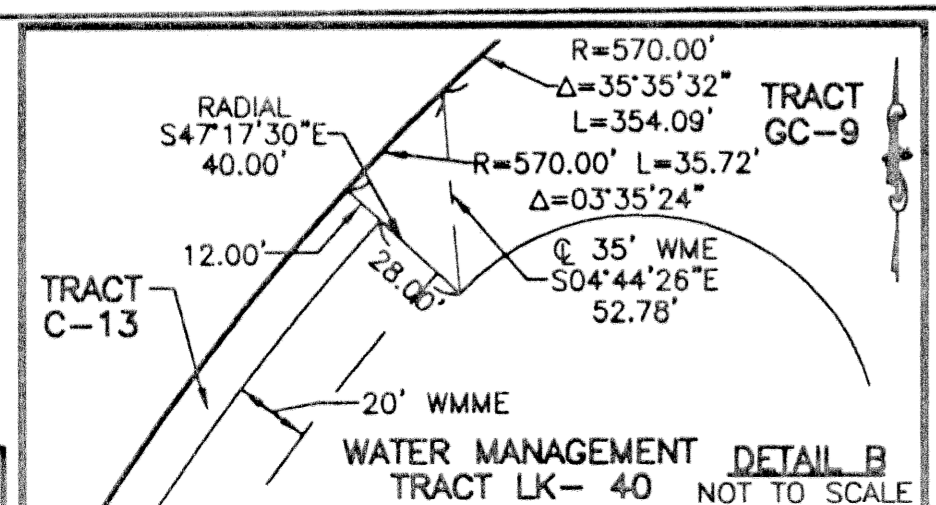
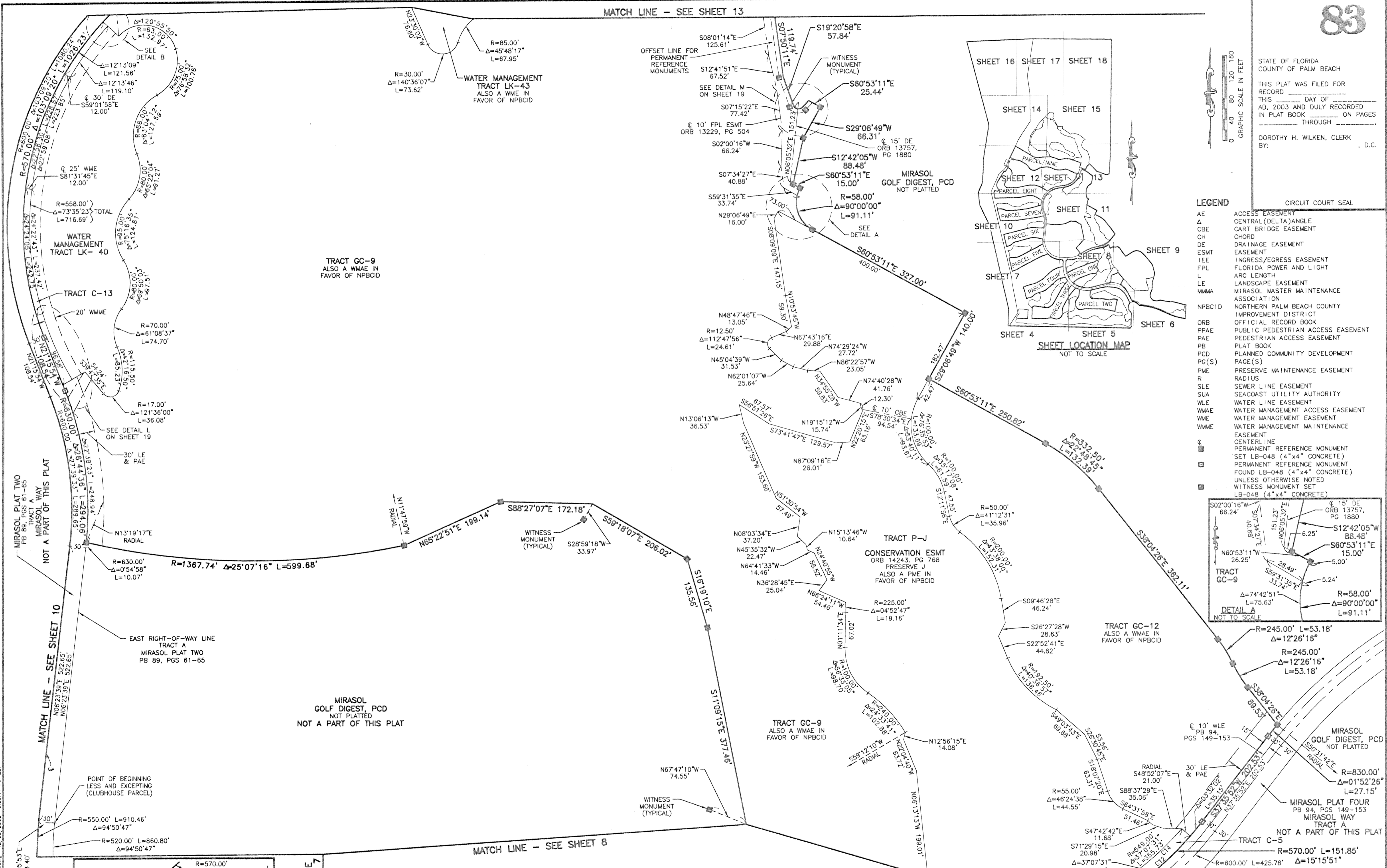
FLORIDA L.B. NO. 48

MOCK ROOS
ENGINEERS SURVEYORS PLANNERS

5720 Corporate Way, West Palm Beach, Florida 33407
(561) 683-3113, fax 478-7248

MATCH LINE SEE SHEET 9

MIRASOL PLAT FIVE
PART OF GOLF DIGEST P.C.D.
BEING IN SECTIONS 32 AND 33,
TOWNSHIP 41 SOUTH, RANGE 42 EAST,
AND IN SECTIONS 04 AND 05,
TOWNSHIP 42 SOUTH, RANGE 42 EAST,
CITY OF PALM BEACH GARDENS,
PALM BEACH COUNTY, FLORIDA



REV: 12-23-02
CAD FILE:
TAYLGCPS\GCP5RPO2