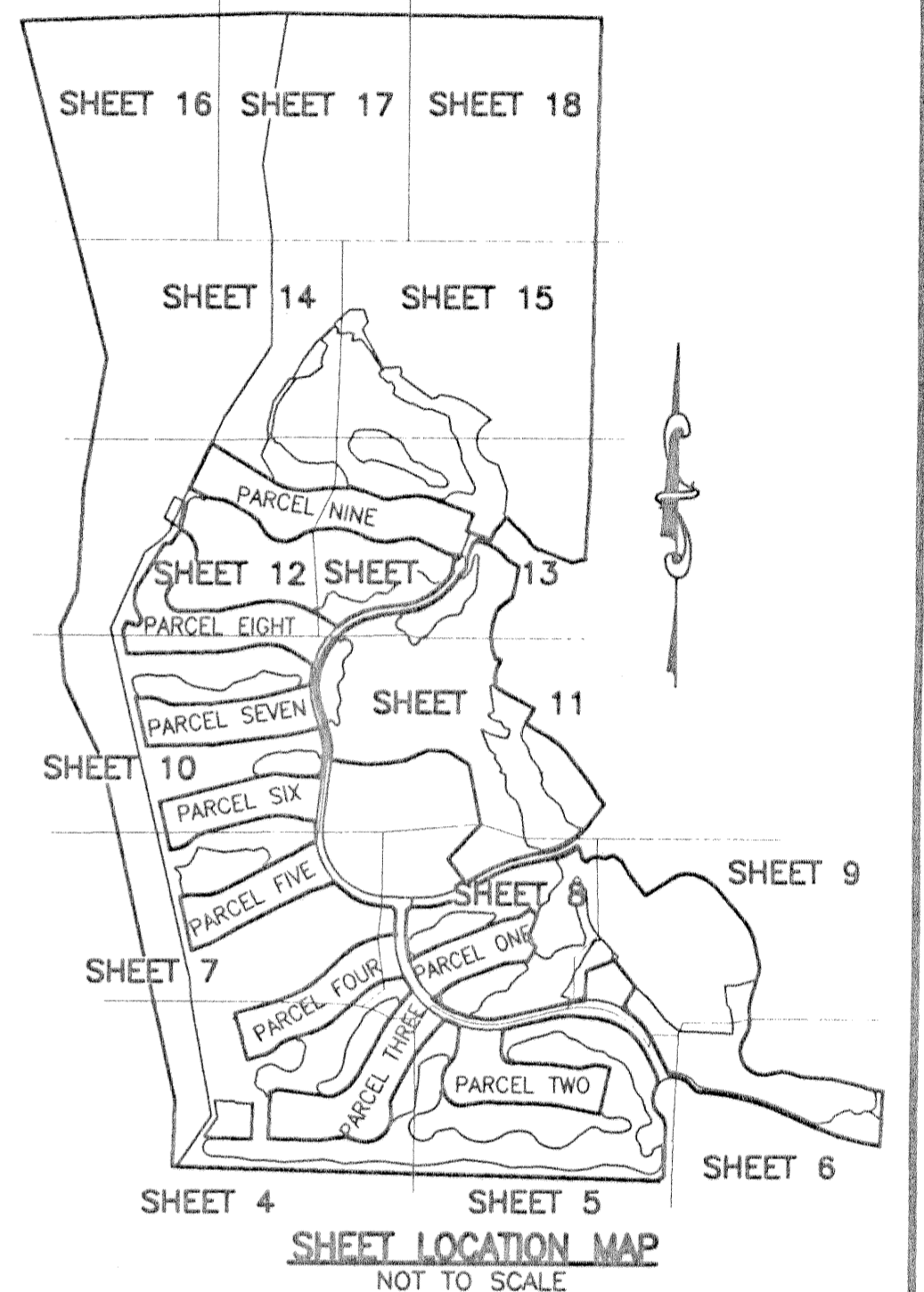


STATE OF FLORIDA
COUNTY OF PALM BEACH
THIS PLAT WAS FILED FOR
RECORD THIS DAY OF
AD, 2003 AND DULY RECORDED
IN PLAT BOOK ON PAGES
THROUGH
DOROTHY H. WILKEN, CLERK
BY: . D.C.

CIRCUIT COURT SEAL

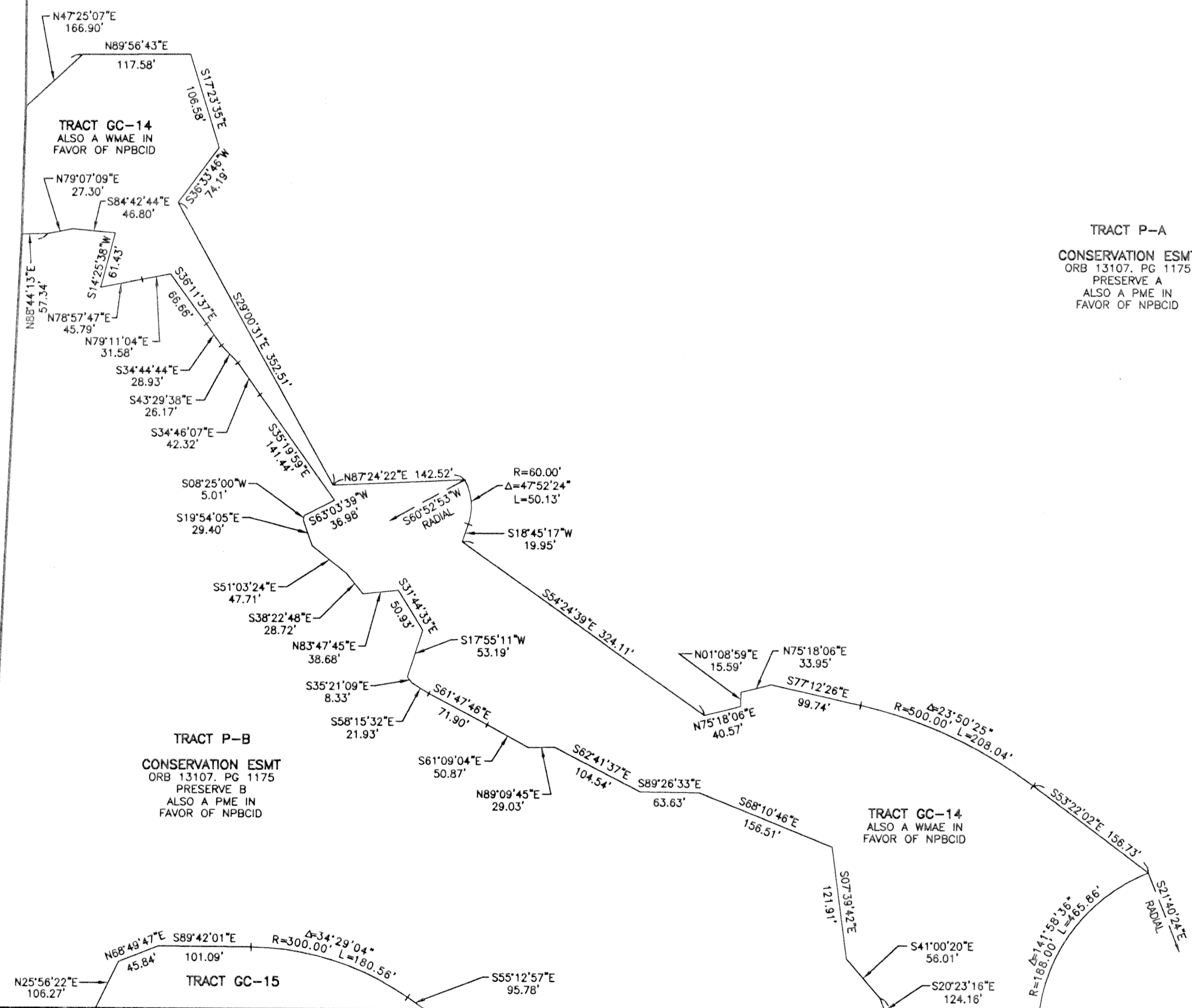


1400.00'

3806.11'

1006.11'

MATCH LINE - SEE SHEET 14



TRACT P-A
CONSERVATION ESMT
ORB 13107, PG 1175
PRESERVE A
ALSO A PME IN
FAVOR OF NPBCID

TRACT P-B
CONSERVATION ESMT
ORB 13107, PG 1175
PRESERVE B
ALSO A PME IN
FAVOR OF NPBCID

TRACT GC-14
ALSO A WMAE IN
FAVOR OF NPBCID

TRACT GC-15

MATCH LINE - SEE SHEET 13

MIRASOL PLAT FIVE

PART OF GOLF DIGEST P.C.D.
BEING IN SECTIONS 32 AND 33, TOWNSHIP 41 SOUTH, RANGE 42 EAST,
AND SECTIONS 04 AND 05, TOWNSHIP 42 SOUTH, RANGE 42 EAST,
CITY OF PALM BEACH GARDENS, PALM BEACH COUNTY, FLORIDA
SHEET 15 OF 19

MIRASOL
GOLF DIGEST, PCD
NOT PLATTED

- LEGEND**
- AE ACCESS EASEMENT
 - Δ CENTRAL (DELTA) ANGLE
 - CBE CART BRIDGE EASEMENT
 - CH CHORD
 - DE DRAINAGE EASEMENT
 - ESMT EASEMENT
 - IEE INGRESS/EGRESS EASEMENT
 - FPL FLORIDA POWER AND LIGHT
 - L ARC LENGTH
 - LE LANDSCAPE EASEMENT
 - MMAE MIRASOL MASTER MAINTENANCE ASSOCIATION
 - NPBCID NORTHERN PALM BEACH COUNTY IMPROVEMENT DISTRICT
 - ORB OFFICIAL RECORD BOOK
 - PPAE PUBLIC PEDESTRIAN ACCESS EASEMENT
 - PAE PEDESTRIAN ACCESS EASEMENT
 - PB PLAT BOOK
 - PCD PLANNED COMMUNITY DEVELOPMENT
 - PG(S) PAGE(S)
 - PME PRESERVE MAINTENANCE EASEMENT
 - R RADIUS
 - SLE SEWER LINE EASEMENT
 - SUA SEACOAST UTILITY AUTHORITY
 - WLE WATER LINE EASEMENT
 - WMAE WATER MANAGEMENT ACCESS EASEMENT
 - WME WATER MANAGEMENT EASEMENT
 - WMAE WATER MANAGEMENT MAINTENANCE EASEMENT
 - ⊙ CENTERLINE
 - ⊙ PERMANENT REFERENCE MONUMENT
 - ⊙ SET LB-048 (4"x4" CONCRETE)
 - ⊙ PERMANENT REFERENCE MONUMENT
 - ⊙ FOUND LB-048 (4"x4" CONCRETE)
 - ⊙ UNLESS NOTED OTHERWISE
 - ⊙ WITNESS MONUMENT SET
 - ⊙ LB-048 (4"x4" CONCRETE)

THIS INSTRUMENT WAS PREPARED BY MARY HANNA CLODFELTER, P.S.M. IN THE OFFICES OF MOCK, ROOS & ASSOCIATES, INC., 5720 CORPORATE WAY, WEST PALM BEACH, FLORIDA 33407.

SCALE:
1" = 80'
P.A. NO.:
99367.00
DATE:
MAY, 2002
DRAWING NO.
41-42-32-59

FLORIDA L.S. NO. 48

MOCK ROOS
ENGINEERS PLANNERS

5720 Corporate Way, West Palm Beach, Florida 33407
(561) 663-3113, fax 478-7248

SHEET 15 OF 19
MIRASOL PLAT FIVE
PART OF GOLF DIGEST P.C.D.
BEING IN SECTIONS 32 AND 33,
TOWNSHIP 41 SOUTH, RANGE 42 EAST,
AND IN SECTIONS 04 AND 05,
TOWNSHIP 42 SOUTH, RANGE 42 EAST,
CITY OF PALM BEACH GARDENS,
PALM BEACH COUNTY, FLORIDA

REV.: 12-23-02
CAD FILE:
TAYLOR\GCP5\GCP5RPO3