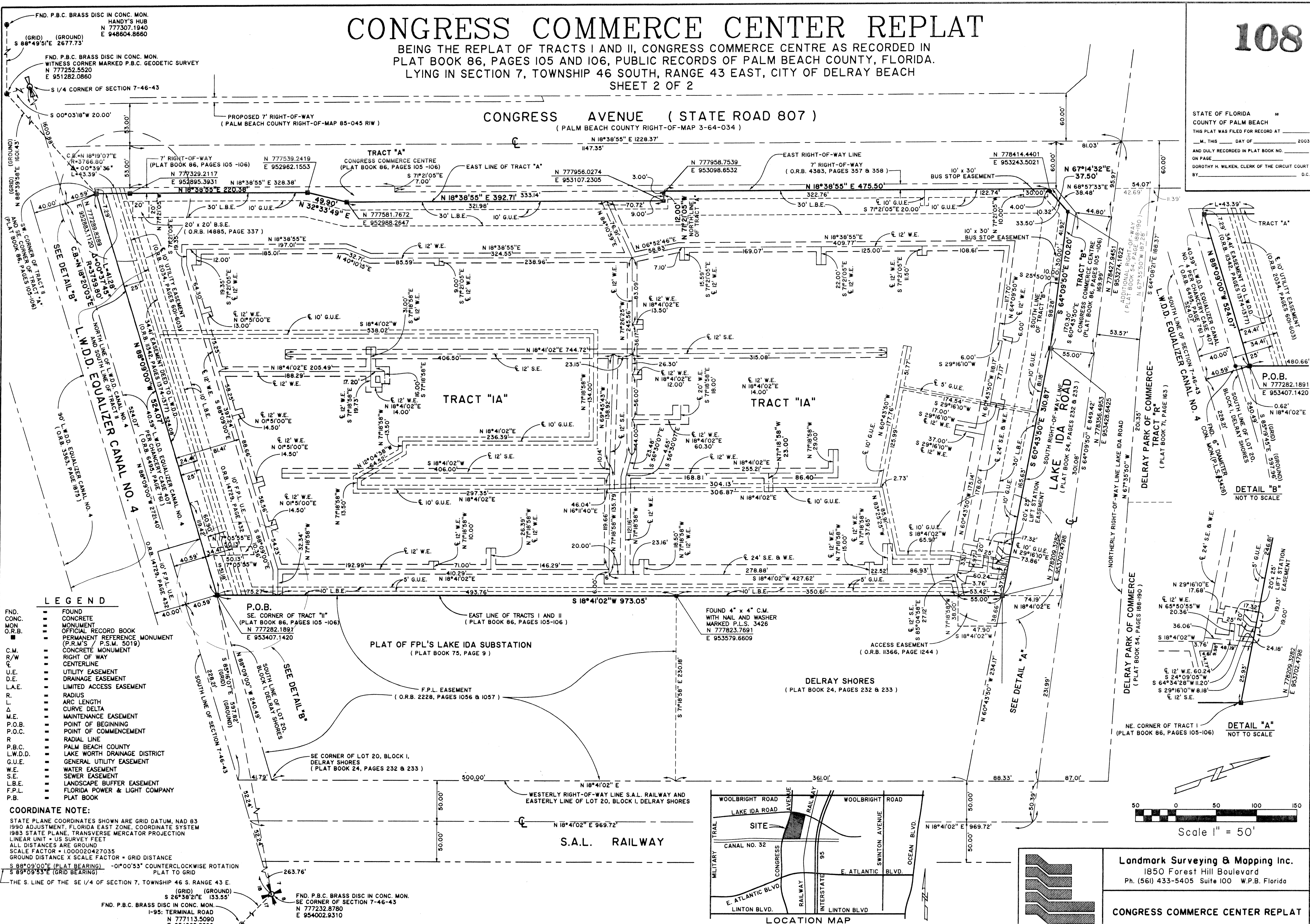


# CONGRESS COMMERCE CENTER REPLAT

BEING THE REPLAT OF TRACTS I AND II, CONGRESS COMMERCE CENTRE AS RECORDED IN PLAT BOOK 86, PAGES 105 AND 106, PUBLIC RECORDS OF PALM BEACH COUNTY, FLORIDA. LYING IN SECTION 7, TOWNSHIP 46 SOUTH, RANGE 43 EAST, CITY OF DELRAY BEACH SHEET 2 OF 2

STATE OF FLORIDA  
COUNTY OF PALM BEACH  
THIS PLAT WAS FILED FOR RECORD AT  
M. THIS DAY OF 2003  
AND DULY RECORDED IN PLAT BOOK NO.  
ON PAGE  
DOROTHY H. WILKEN, CLERK OF THE CIRCUIT COURT  
BY \_\_\_\_\_ D.C.



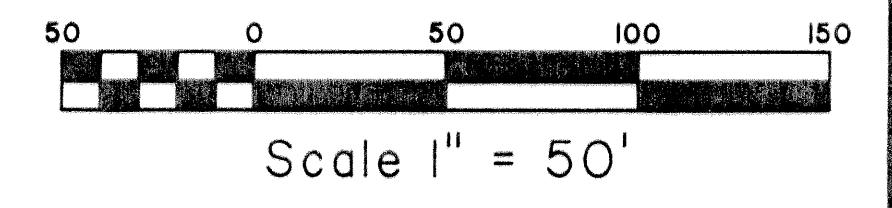
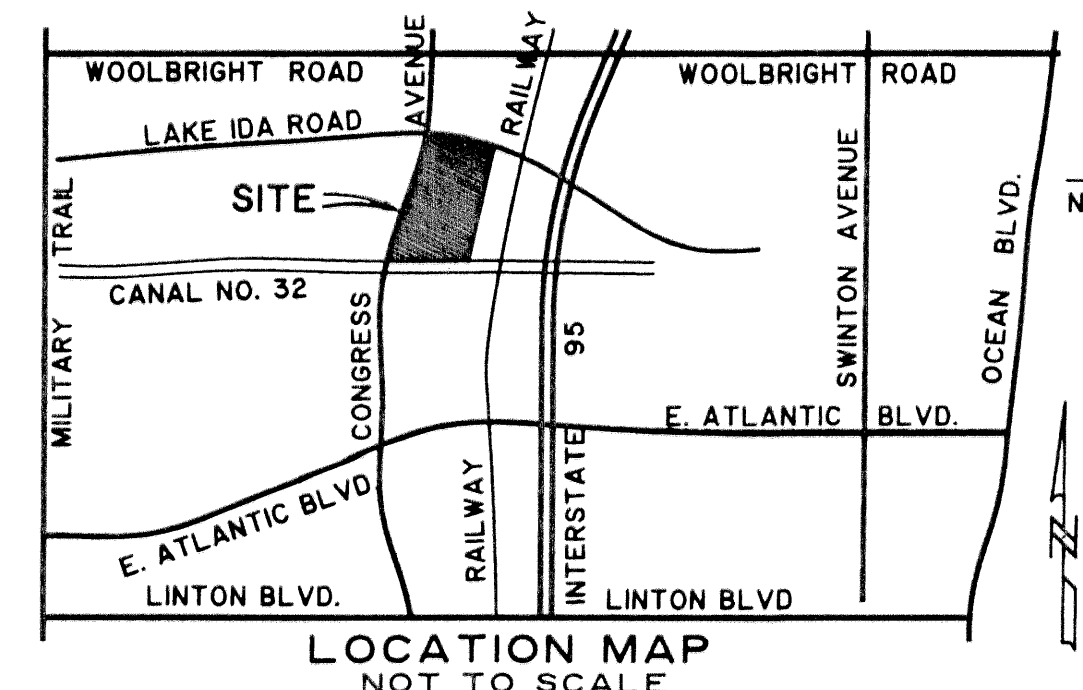
### LEGEND

- FOUND CONC. MON. O.R.B.
- OFFICIAL RECORD BOOK
- PERMANENT REFERENCE MONUMENT (P.R.M.'S / P.S.M. 5019)
- CONCRETE MONUMENT
- RIGHT OF WAY CENTERLINE
- UTILITY EASEMENT
- DRAINAGE EASEMENT
- LIMITED ACCESS EASEMENT
- RADIUS
- ARC LENGTH
- CURVE DELTA
- MAINTENANCE EASEMENT
- POINT OF BEGINNING
- POINT OF COMMENCEMENT
- RADIAL LINE
- PALM BEACH COUNTY LAKE WORTH DRAINAGE DISTRICT
- GENERAL UTILITY EASEMENT
- WATER EASEMENT
- SEWER EASEMENT
- LANDSCAPE BUFFER EASEMENT
- FLORIDA POWER & LIGHT COMPANY PLAT BOOK

### COORDINATE NOTE:

STATE PLANE COORDINATES SHOWN ARE GRID DATUM, NAD 83 1990 ADJUSTMENT, FLORIDA EAST ZONE, COORDINATE SYSTEM 1983 STATE PLANE, TRANSVERSE MERCATOR PROJECTION LINEAR UNIT - US SURVEY FEET  
ALL DISTANCES ARE GROUND  
SCALE FACTOR = 1.000020427035  
GROUND DISTANCE X SCALE FACTOR = GRID DISTANCE  
S 88°09'00"E (PLAT BEARING) -01°00'53" COUNTERCLOCKWISE ROTATION PLAT TO GRID  
S 89°09'53"E (GRID BEARING)

THE S. LINE OF THE SE 1/4 OF SECTION 7, TOWNSHIP 46 S. RANGE 43 E. (GRID) (GROUND)  
S 26°38'21"E 133.55'  
FND. P.B.C. BRASS DISC IN CONC. MON. SE CORNER OF SECTION 7-46-43  
N 77732.8780  
E 954002.9310



Landmark Surveying & Mapping Inc.  
1850 Forest Hill Boulevard  
Ph. (561) 433-5405 Suite 100 W.P.B. Florida

CONGRESS COMMERCE CENTER REPLAT