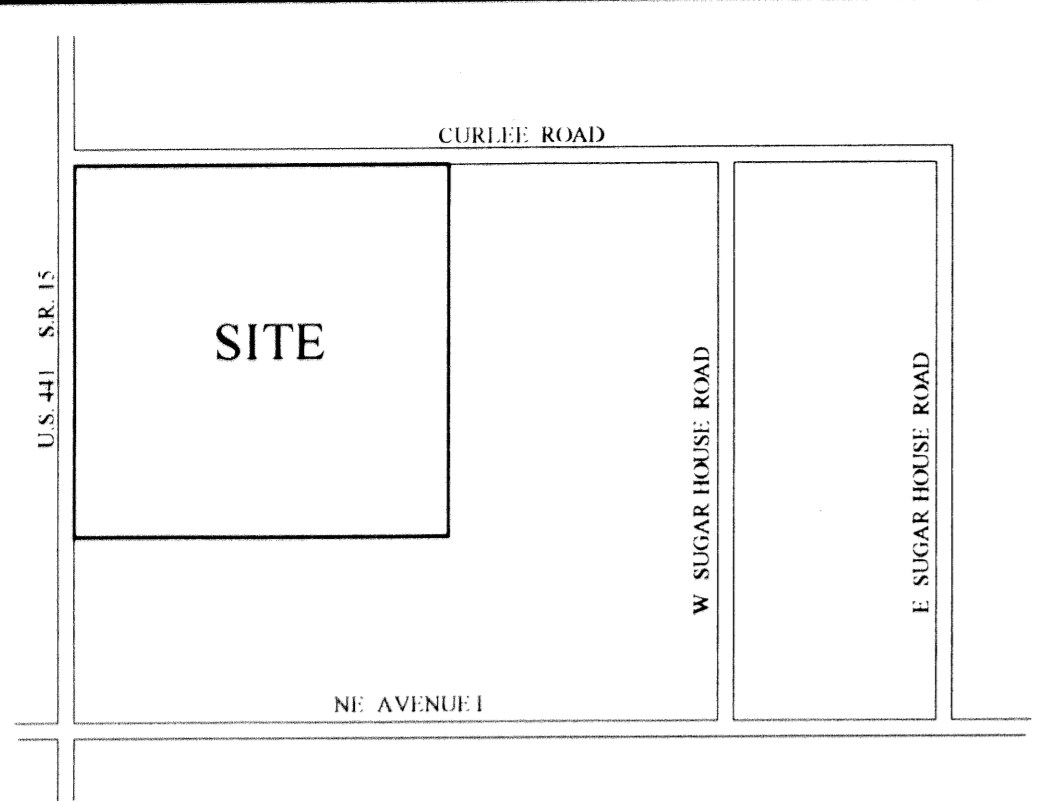
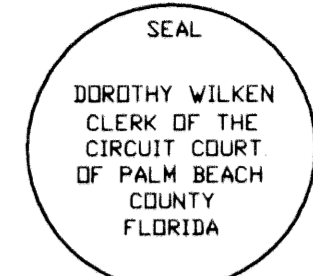
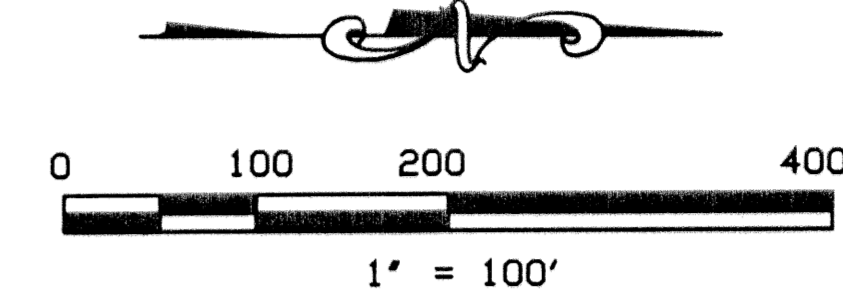


STATE OF FLORIDA
 COUNTY OF PALM BEACH
 THIS PLAT WAS FILED FOR
 RECORD AT _____
 THIS _____ DAY OF _____
 2003 AND DULY RECORDED IN
 PLAT BOOK NO. _____ ON
 PAGES _____ OF _____

DOROTHY WILKEN
 CLERK OF THE CIRCUIT COURT
 OF PALM BEACH COUNTY
 FLORIDA
 BY: _____
 DEPUTY CLERK

BELLE GLADE BUSINESS PARK

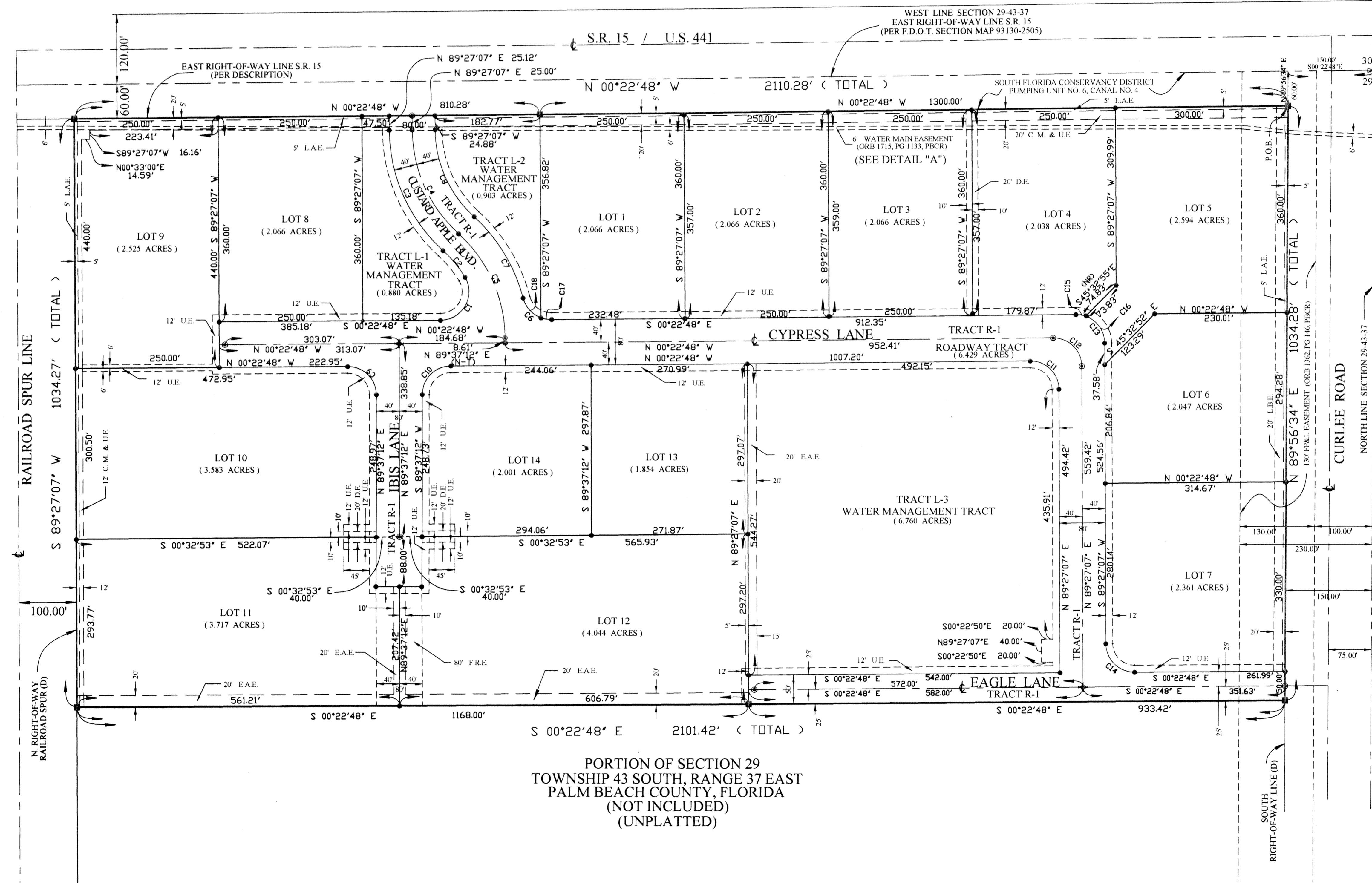
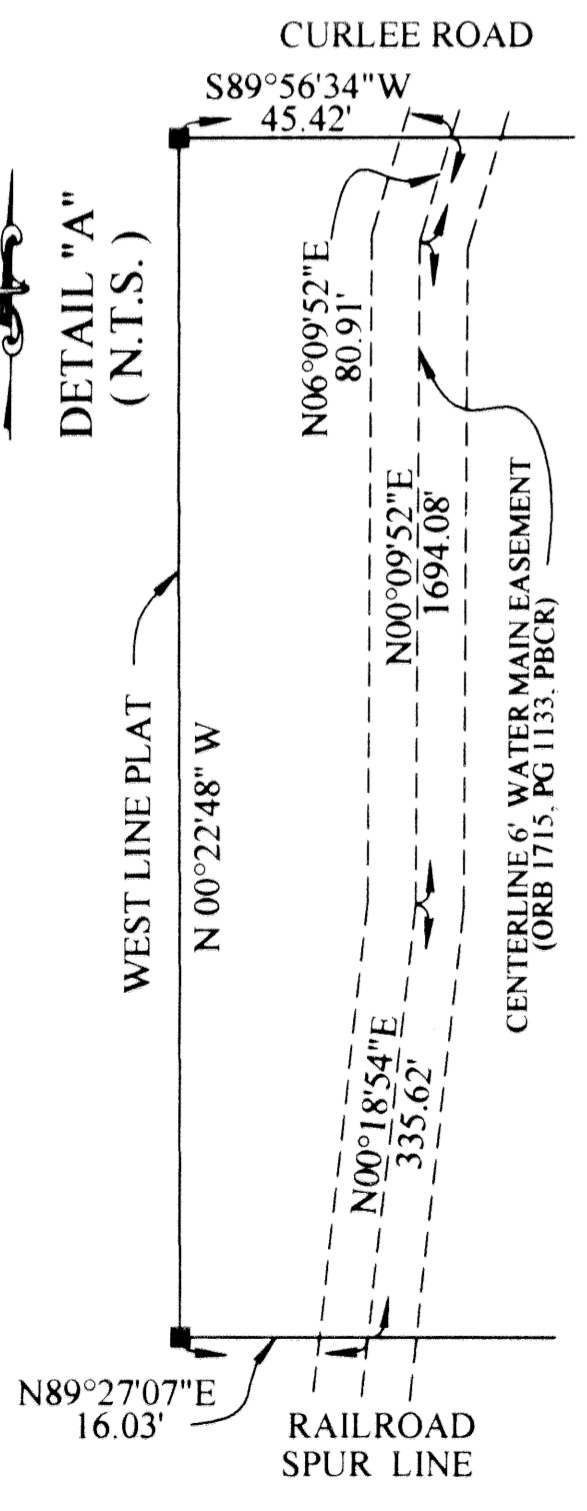
A PORTION OF SECTION 29, TOWNSHIP 43 SOUTH, RANGE 37 EAST
 CITY OF BELLE GLADE
 PALM BEACH COUNTY, FLORIDA
 FEBRUARY, 2003



LOCATION MAP
 NOT TO SCALE

LEGEND

- CENTER LINE
- CANAL MAINTENANCE & UTILITY EASEMENT
- D — DRAINAGE EASEMENT
- E.A.E. — EMERGENCY ACCESS EASEMENT
- F.D.O.T. — FLORIDA DEPARTMENT OF TRANSPORTATION
- FP&L — FLORIDA POWER AND LIGHT COMPANY
- F.R.E. — FUTURE ROADWAY EASEMENT
- I.R.&C. — IRON ROD AND CAP
- L.A.E. — LIMITED ACCESS EASEMENT
- L.B. — LICENSED BUSINESS
- L.B.E. — LANDSCAPE BUFFER EASEMENT
- (NR) — NOT RADIAL
- (N-T) — NON-TANGENT
- NOT TO SCALE
- OFFICIAL RECORDS BOOK
- OFFSET
- P.B.C.R. — PALM BEACH COUNTY RECORD
- PG. — PAGE
- P.O.B. — POINT OF BEGINNING
- P.O.C. — POINT OF COMMENCEMENT
- (RAD) — RADIAL
- SECTION-TOWNSHIP-RANGE
- UTILITY EASEMENT
- SET 5/8" IRON ROD AND CAP (L.B. 3110)
- SET PERMANENT CONTROL POINT (L.B. 3110)
- SET PERMANENT REFERENCE MONUMENT (L.B. 3110)
- SET PK NAILS (STRADDLERS) (2" OFFSET EACH DIRECTION)



CURVE TABLE

NUMBER	DELTA ANGLE	RADIUS	ARC LENGTH
C1	120°52'51"	50.00'	105.49'
C2	16°29'09"	210.00'	60.42'
C3	47°11'55"	290.00'	238.89'
C4	47°11'55"	250.00'	205.94'
C5	47°11'55"	250.00'	205.94'
C6	76°01'23"	50.00'	66.34'
C7	33°23'23"	290.00'	169.00'
C8	47°11'55"	210.00'	172.99'
C9	90°00'00"	50.00'	78.54'
C10	90°00'00"	50.00'	78.54'
C11	89°49'55"	50.00'	78.39'
C12	89°49'55"	50.00'	78.39'
C13	89°49'55"	50.00'	78.39'
C14	89°49'55"	50.00'	78.39'
C15	20°09'05"	50.00'	17.58'
C16	69°40'50"	50.00'	60.81'
C17	20°31'46"	50.00'	17.91'
C18	55°29'37"	50.00'	48.43'

CHORD TABLE

NUMBER	CHORD LENGTH	CHORD BEARING
C4	200.17'	N65°51'10"E
C5	200.17'	N65°51'10"E
C12	70.61'	N44°32'10"E

ACREAGE TABLE

LOT \ TRACT	ACRES
LOT 1	(2.066 ACRES)
LOT 2	(2.066 ACRES)
LOT 3	(2.066 ACRES)
LOT 4	(2.038 ACRES)
LOT 5	(2.594 ACRES)
LOT 6	(2.047 ACRES)
LOT 7	(2.361 ACRES)
LOT 8	(2.066 ACRES)
LOT 9	(2.525 ACRES)
LOT 10	(3.583 ACRES)
LOT 11	(3.717 ACRES)
LOT 12	(4.044 ACRES)
LOT 13	(1.854 ACRES)
LOT 14	(2.001 ACRES)
TRACT L-1	(0.880 ACRES)
TRACT L-2	(0.903 ACRES)
TRACT L-3	(6.760 ACRES)
TRACT R-1	(6.429 ACRES)
TOTAL	(50.000 ACRES)

PORTION OF SECTION 29
 TOWNSHIP 43 SOUTH, RANGE 37 EAST
 PALM BEACH COUNTY, FLORIDA
 (NOT INCLUDED)
 (UNPLATTED)

NOTICE:
 THIS PLAT AS RECORDED IN ITS GRAPHIC FORM, IS THE OFFICIAL DEPICTION OF THE SUBDIVIDED LANDS DESCRIBED HEREIN AND WILL IN NO CIRCUMSTANCES BE SUPPLANTED IN AUTHORITY BY ANY OTHER GRAPHIC OR DIGITAL FORM OF THE PLAT. THERE MAY BE ADDITIONAL RESTRICTIONS THAT ARE NOT RECORDED ON THIS PLAT THAT MAY BE FOUND IN THE PUBLIC RECORDS OF THIS COUNTY.

THIS INSTRUMENT WAS PREPARED BY ROBERT D. KEENER
 FLORIDA LICENSED SURVEYOR AND MAPPER, LICENSE NO. LS-4846
 IN AND FOR THE OFFICE OF:
CRAIG A. SMITH & ASSOCIATES
 CONSULTING ENGINEERS-PLANNERS-SURVEYORS-GRANTS SPECIALISTS
 242 ROYAL PALM BEACH BOULEVARD
 ROYAL PALM BEACH, FLORIDA 33411
 (561) 791-9280
 CERTIFICATE NO. LB-5110