

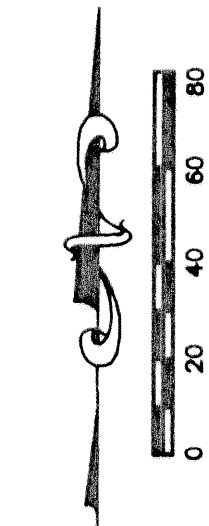
MIRASOL PARCEL TWENTY-FOUR

PART OF GOLF DIGEST P.C.D.
BEING IN SECTION 03, TOWNSHIP 42 SOUTH, RANGE 42 EAST,
CITY OF PALM BEACH GARDENS,
PALM BEACH COUNTY, FLORIDA
SHEET 3 OF 5

117

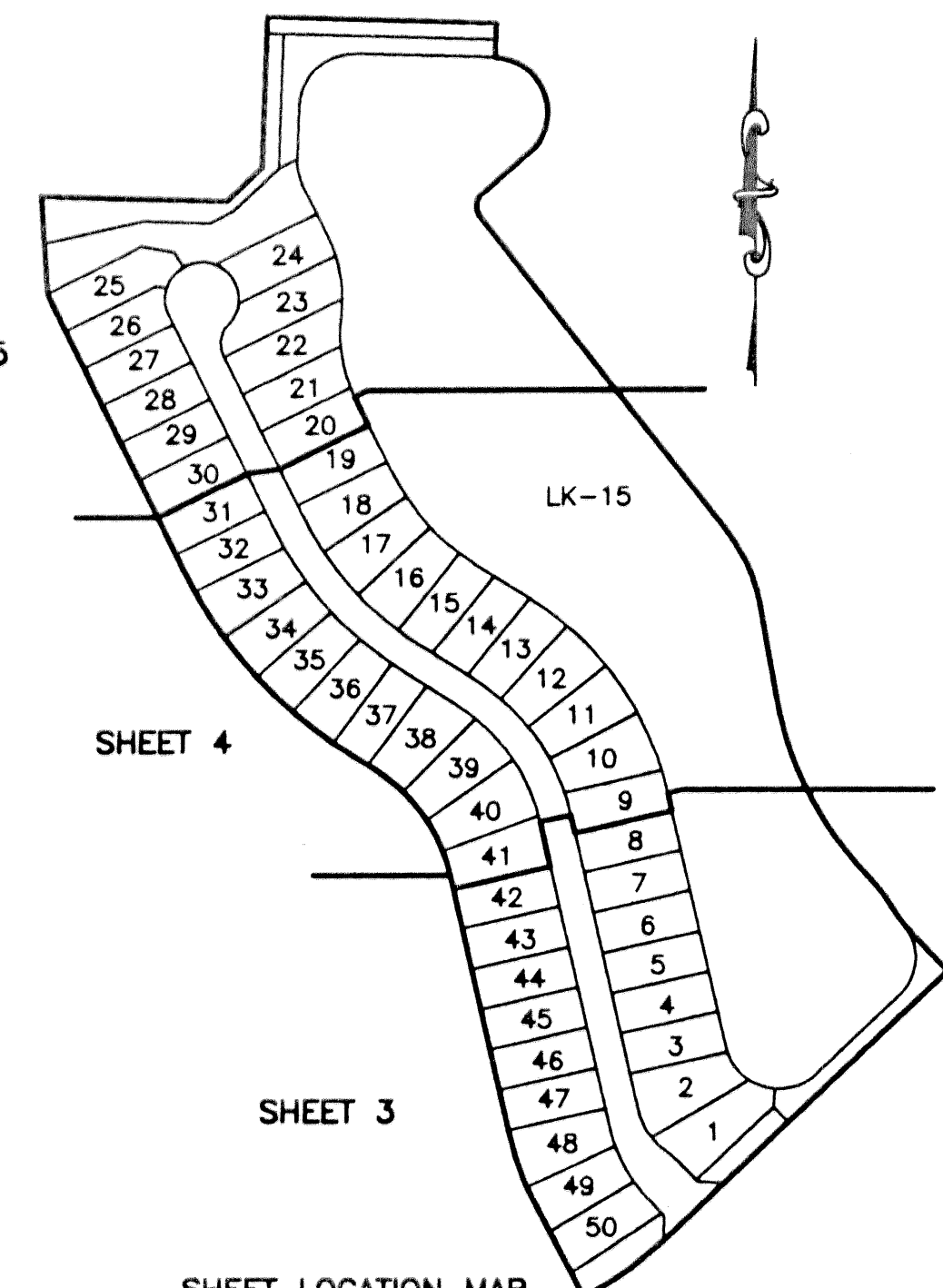
STATE OF FLORIDA
COUNTY OF PALM BEACH
THIS PLAT WAS FILED FOR
RECORD _____ DAY OF _____
AD, 2003 AND DULY RECORDED
IN PLAT BOOK _____ ON PAGES
____ THROUGH _____
DOROTHY H. WILKEN, CLERK
BY: _____, D.C.

CIRCUIT COURT SEAL



MATCHLINE SEE SHEET 4

MATCHLINE SEE SHEET 4



SHEET LOCATION MAP
NOT TO SCALE

MIRASOL GOLF DIGEST, PCD
NOT PLATTED

WATER MANAGEMENT
TRACT LK-15
ALSO A WME IN FAVOR
OF NPBCID

MIRASOL
GOLF DIGEST, PCD
NOT PLATTED

REFERENCE MONUMENT
MIRASOL PLAT FOUR
PB 94, PGS 149-153
POINT OF CURVATURE

10' WLE
PLAT BOOK 94,
PAGES 149-153

LEGEND

- Δ CENTRAL (DELTA) ANGLE
- CH CHORD
- DE DRAINAGE EASEMENT
- FPL FLORIDA POWER AND LIGHT
- IEE INGRESS-EGRESS EASEMENT
- L ARC LENGTH
- NPBCID NORTHERN PALM BEACH COUNTY IMPROVEMENT DISTRICT
- ORB OFFICIAL RECORD BOOK
- PAE PEDESTRIAN ACCESS EASEMENT
- PB PLAT BOOK
- PG PAGE
- PCD PLANNED COMMUNITY DEVELOPMENT
- R RADIUS
- UE UTILITY EASEMENT
- WLE WATER LINE EASEMENT
- WMAE WATER MANAGEMENT ACCESS EASEMENT
- WME WATER MANAGEMENT EASEMENT
- WME WATER MANAGEMENT MAINTENANCE EASEMENT
- PERMANENT REFERENCE MONUMENT FOUND LB 048 (4"x4" CONCRETE)
- PERMANENT REFERENCE MONUMENT SET LB 048 (4"x4" CONCRETE)
- ⊙ PERMANENT CONTROL POINT
- ⊕ SET LB 048
- ⊖ CENTERLINE
- BE BUFFER EASEMENT

THIS INSTRUMENT WAS PREPARED BY MARY HANNA CLODFELTER, P.S.M. IN THE OFFICES OF MOCK, ROOS & ASSOCIATES, INC., 5720 CORPORATE WAY, WEST PALM BEACH, FLORIDA 33407.

SCALE: 1"=40'	FLORIDA L.B. NO. 48
P.A. NO.: 99371.00	MOCK • ROOS ENGINEERS • SURVEYORS • PLANNERS
DATE: OCTOBER 2002	
DRAWING NO. 42-42-03-93	
5720 Corporate Way, West Palm Beach, Florida 33407 (561) 683-3113, fax 478-7248	

MIRASOL PARCEL TWENTY-FOUR
PART OF GOLF DIGEST P.C.D.
BEING IN SECTION 03,
TOWNSHIP 42 SOUTH, RANGE 42 EAST,
CITY OF PALM BEACH GARDENS,
PALM BEACH COUNTY, FLORIDA

SHEET 3 OF 5

S:\top\l\top\lpa24\dwg\lpa24rp02.dwg 2/10/2003 1:28:04 PM EST

REV.: 02-10-03
CAD FILE:
TAYLPA24\PA24RP02