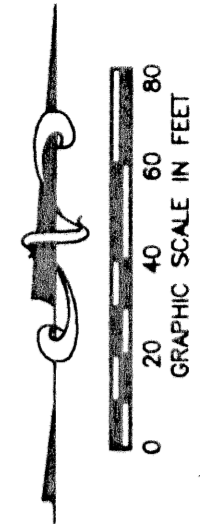


MIRASOL PARCEL TWENTY-FOUR

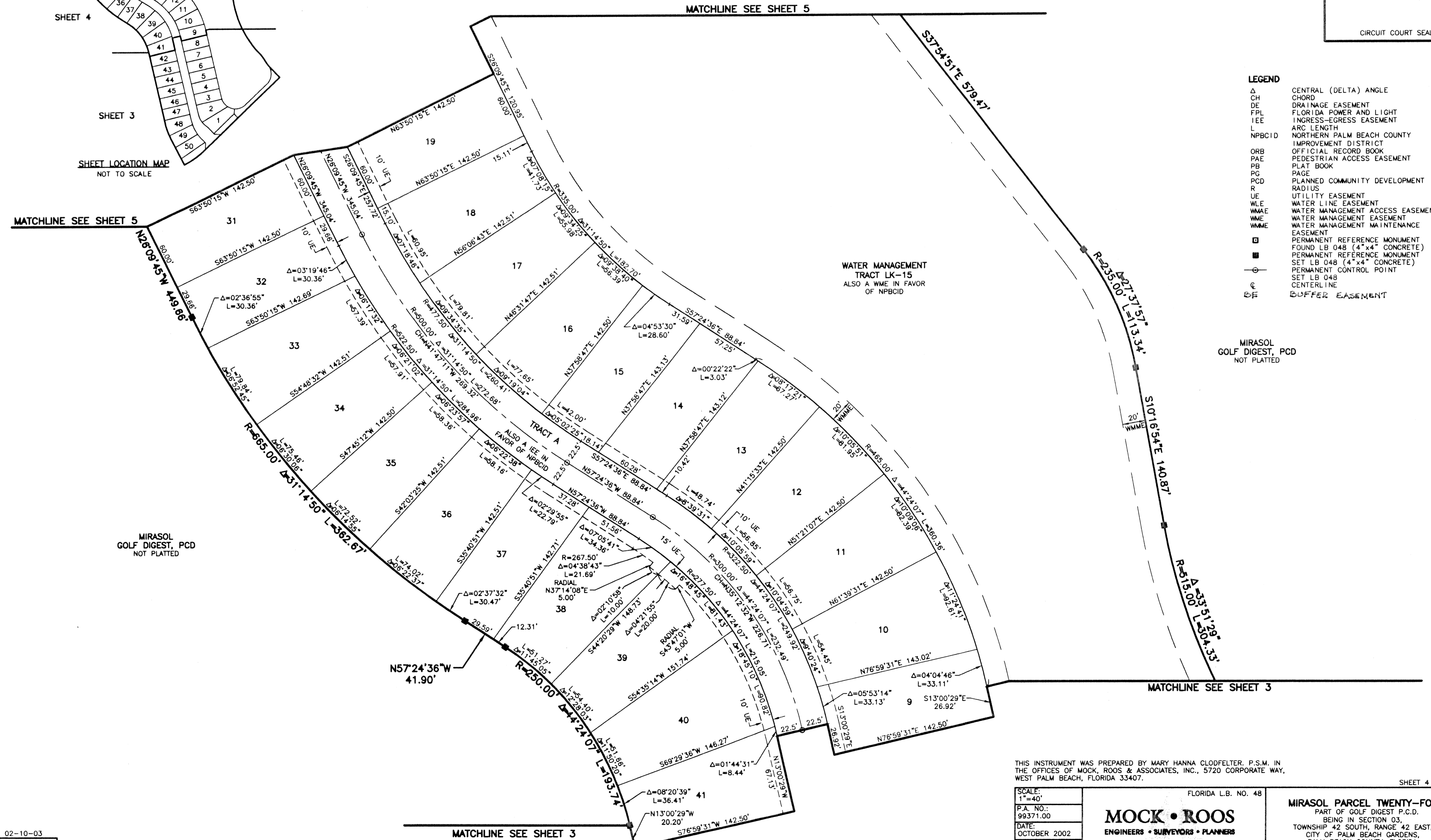
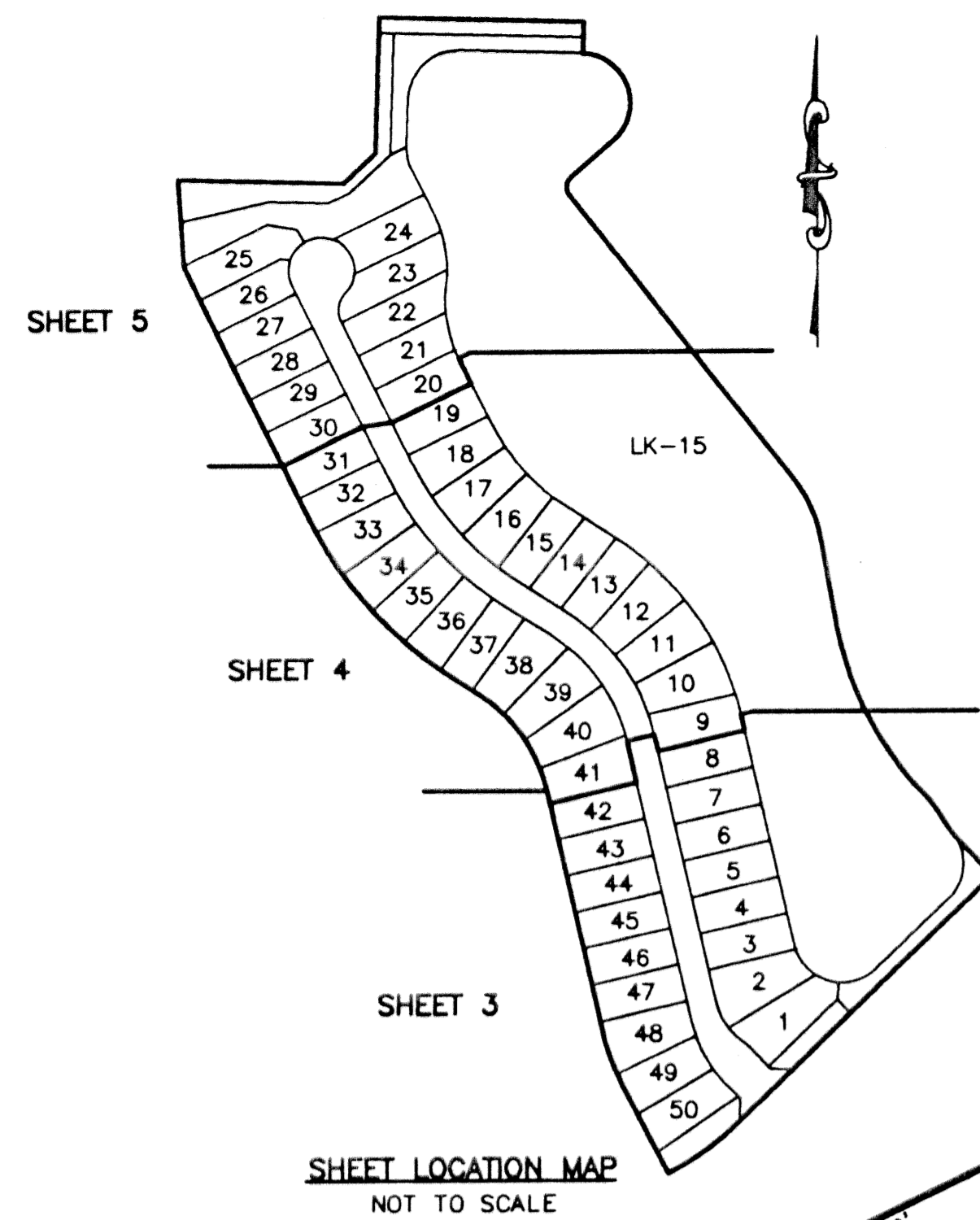
PART OF GOLF DIGEST P.C.D.
BEING IN SECTION 03, TOWNSHIP 42 SOUTH, RANGE 42 EAST,
CITY OF PALM BEACH GARDENS,
PALM BEACH COUNTY, FLORIDA
SHEET 4 OF 5

118

STATE OF FLORIDA
COUNTY OF PALM BEACH
THIS PLAT WAS FILED FOR
RECORD _____ DAY OF _____
AD, 2003 AND DULY RECORDED
IN PLAT BOOK _____ ON PAGES
_____ THROUGH _____
BY: DOROTHY H. WILKEN, CLERK, D.C.



CIRCUIT COURT SEAL



THIS INSTRUMENT WAS PREPARED BY MARY HANNA CLODFELTER, P.S.M. IN THE OFFICES OF MOCK, ROOS & ASSOCIATES, INC., 5720 CORPORATE WAY, WEST PALM BEACH, FLORIDA 33407.

SCALE:
1"=40'
P.A. NO.:
99371.00
DATE:
OCTOBER 2002
DRAWING NO.
42-42-03-93

FLORIDA L.B. NO. 48
MOCK • ROOS
ENGINEERS • SURVEYORS • PLANNERS
5720 Corporate Way, West Palm Beach, Florida 33407
(561) 683-3113, fax 478-7248

SHEET 4 OF 5
MIRASOL PARCEL TWENTY-FOUR
PART OF GOLF DIGEST P.C.D.
BEING IN SECTION 03,
TOWNSHIP 42 SOUTH, RANGE 42 EAST,
CITY OF PALM BEACH GARDENS,
PALM BEACH COUNTY, FLORIDA

S:\top\toy\pac24\dwg\pac24rp02.dwg 2/10/2003 1:28:04 PM EST
REV.: 02-10-03
CAD FILE:
TAYLPA24\PA24RP02