

# IBIS GOLF AND COUNTRY CLUB PLAT NO. 33

A PLANNED UNIT DEVELOPMENT  
 BEING A REPLAT OF ALL OF TRACT G, AND A PORTION OF TRACT H, IBIS GOLF AND COUNTRY CLUB  
 PLAT NO. 7, AS RECORDED IN PLAT BOOK 67, PAGES 152 THROUGH 168,  
 LYING IN SECTION 36, TOWNSHIP 42 SOUTH, RANGE 41 EAST,  
 CITY OF WEST PALM BEACH, PALM BEACH COUNTY, FLORIDA

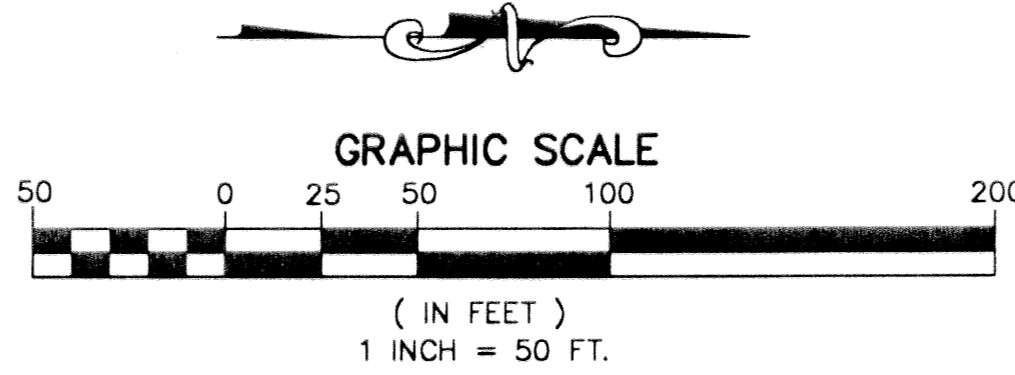
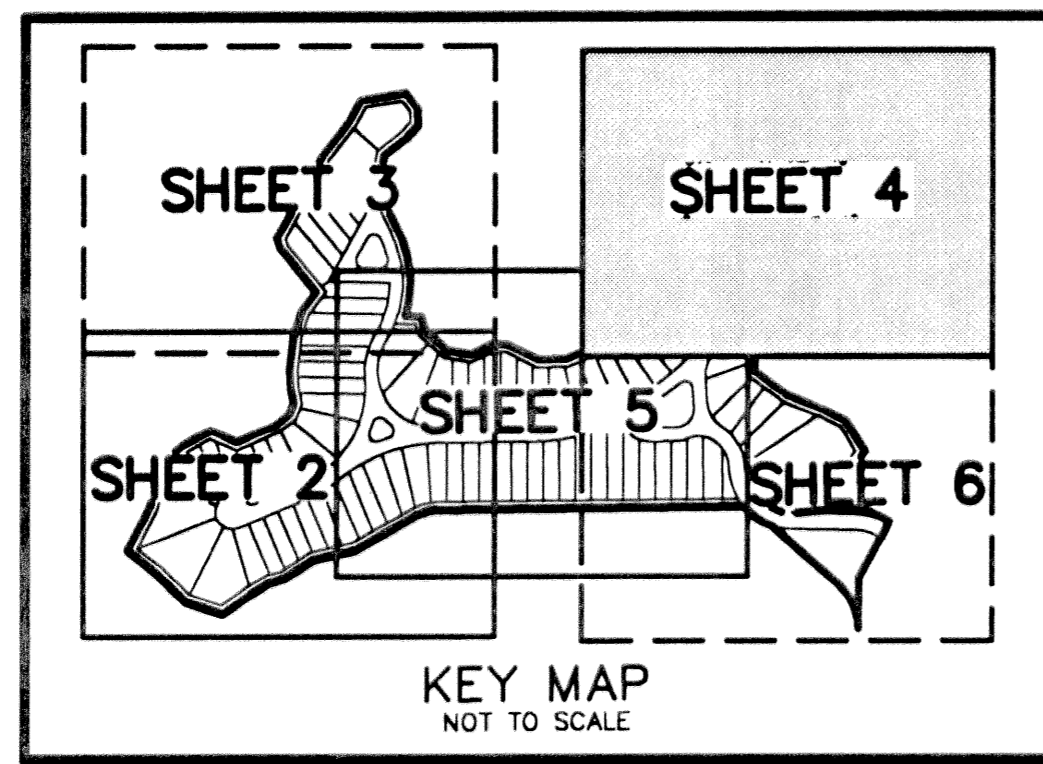
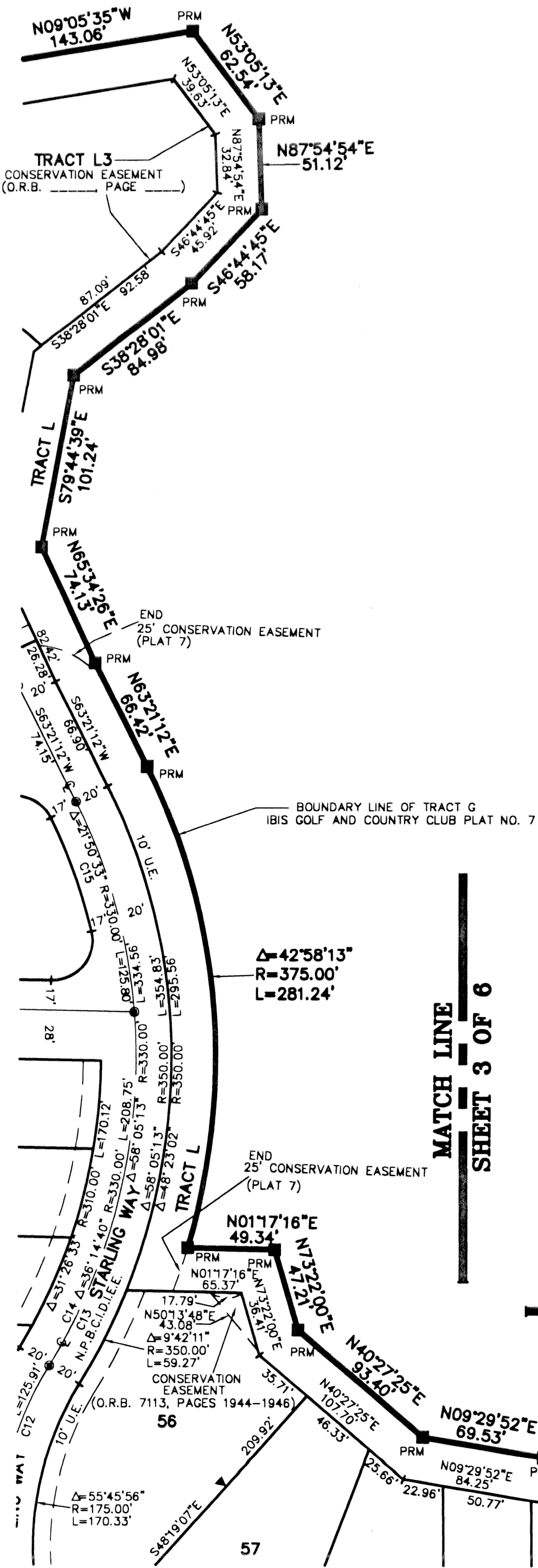
PREPARED BY  
 DAVID P. LINDLEY  
 OF  
 CAULFIELD and WHEELER, INC.  
 ENGINEERS - PLANNERS - SURVEYORS  
 7301-A WEST PALMETTO PARK ROAD, SUITE 100A  
 BOCA RATON, FLORIDA 33433 - (561)392-1991  
 OCTOBER - 2002

STATE OF FLORIDA  
 COUNTY OF PALM BEACH  
 THIS PLAT WAS FILED FOR  
 RECORD AT \_\_\_\_\_ M.  
 THIS \_\_\_\_\_ DAY OF \_\_\_\_\_  
 A.D. 2003 AND DULY RECORDED  
 IN PLAT BOOK \_\_\_\_\_ ON  
 PAGES \_\_\_\_\_ AND \_\_\_\_\_  
 DOROTHY H. WILKEN

BY: \_\_\_\_\_  
 DEPUTY CLERK

SHEET 4 OF 6

WETLAND PRESERVATION AREA NO. 1  
 IBIS GOLF AND COUNTRY CLUB PLAT NO. 7  
 (PLAT BOOK 67, PAGES 152 THROUGH 168)



**TABULAR DATA**

TOTAL AREA OF THIS PLAT	40.099 ACRES
AREA OF LOTS	26.704 ACRES
AREA OF TRACTS L THROUGH L10	7.784 ACRES
AREA OF PRIVATE ROADWAY	5.611 ACRES
TOTAL NUMBER OF UNITS THIS PLAT	98
DENSITY THIS PLAT	2.44 UNITS/ACRE

**CHORD BEARING TABLE**

CURVE NO.	CHORD BEARING	CHORD DISTANCE
C1	S14°41'32"W	96.28'
C2	S44°14'56"W	240.85'
C3	S61°48'26"W	109.30'
C4	S30°29'43"E	75.02'
C5	N77°17'02"W	43.30'
C6	S11°39'26"E	280.92'
C7	N34°39'17"W	297.18'
C8	N57°04'09"W	266.43'
C9	N77°50'59"W	106.18'
C10	N73°34'28"W	99.94'
C11	S31°08'10"E	105.05'
C12	N77°03'28"W	123.73'
C13	N87°36'11"W	320.41'
C14	N78°40'55"W	205.29'
C15	S74°16'29"W	125.04'
C16	S18°22'00"W	48.47'
C17	N47°16'30"W	109.33'
C18	N34°04'18"W	802.11'

WETLAND PRESERVATION AREA NO. 1  
 IBIS GOLF AND COUNTRY CLUB PLAT NO. 7  
 (PLAT BOOK 67, PAGES 152 THROUGH 168)

MATCH LINE  
 SHEET 3 OF 6

WETLAND PRESERVATION AREA NO. 1  
 IBIS GOLF AND COUNTRY CLUB PLAT NO. 7  
 (PLAT BOOK 67, PAGES 152 THROUGH 168)

MATCH LINE  
 SHEET 5 OF 6

MATCH LINE  
 SHEET 6 OF 6