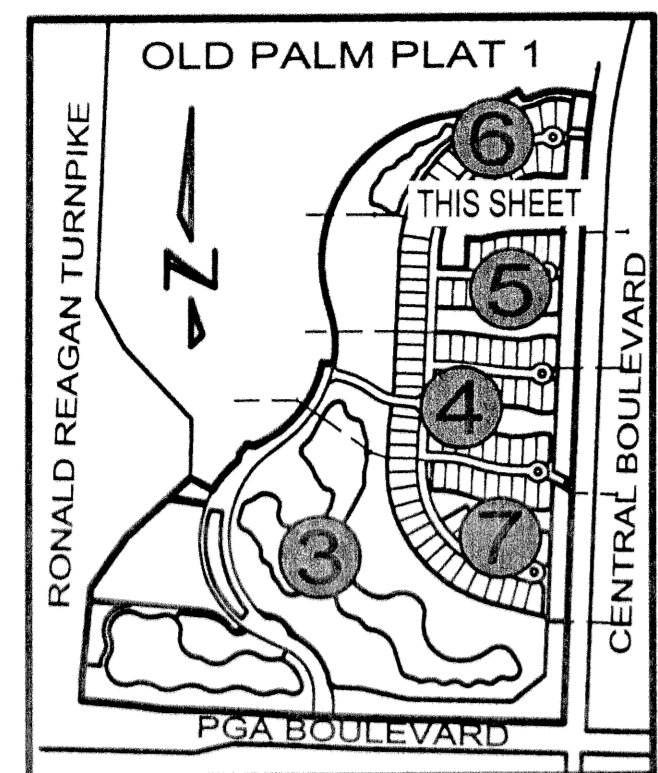


OLD PALM PLAT TWO

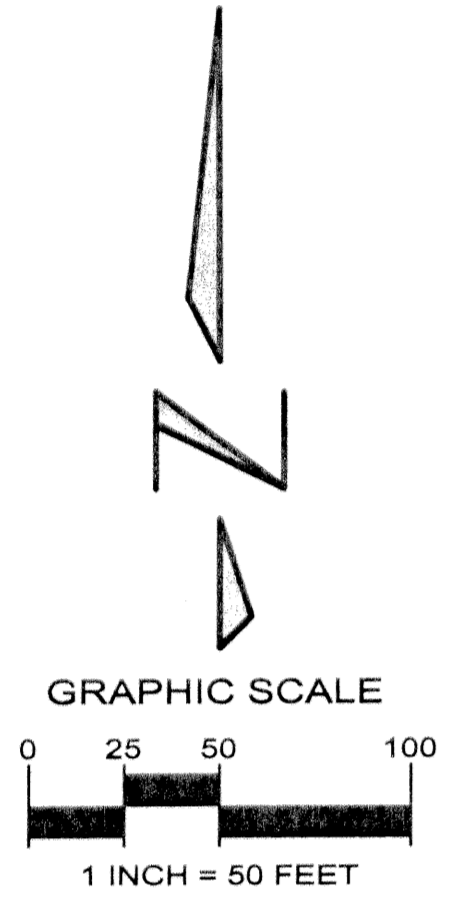
A REPLAT OF A PORTION OF PARCEL 1, OLD PALM PLAT 1 AS RECORDED IN PLAT BOOK 96, PAGES 31 THROUGH 34, PUBLIC RECORDS OF PALM BEACH COUNTY, FLORIDA LYING IN THE WEST HALF OF SECTION 2, TOWNSHIP 42 SOUTH, RANGE 42 EAST, CITY OF PALM BEACH GARDENS, PALM BEACH COUNTY, FLORIDA SHEET No.6 OF 7 MARCH 2003



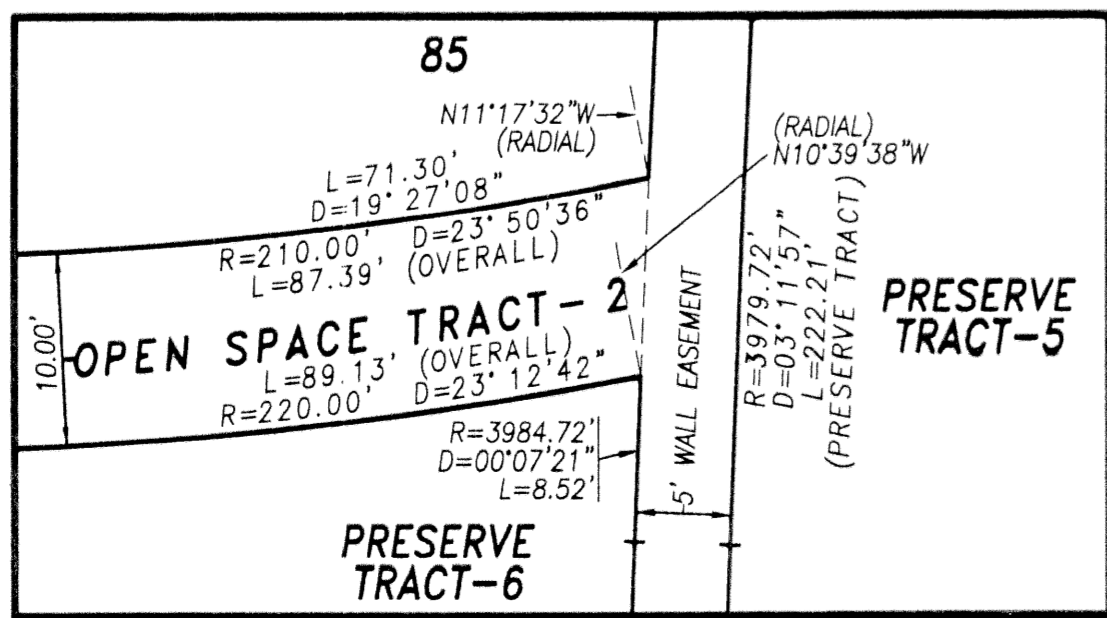
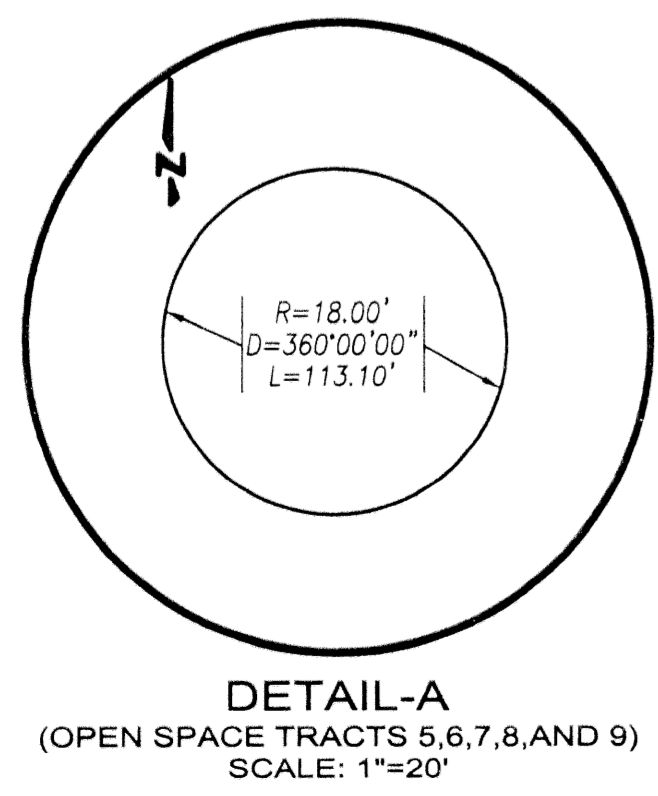
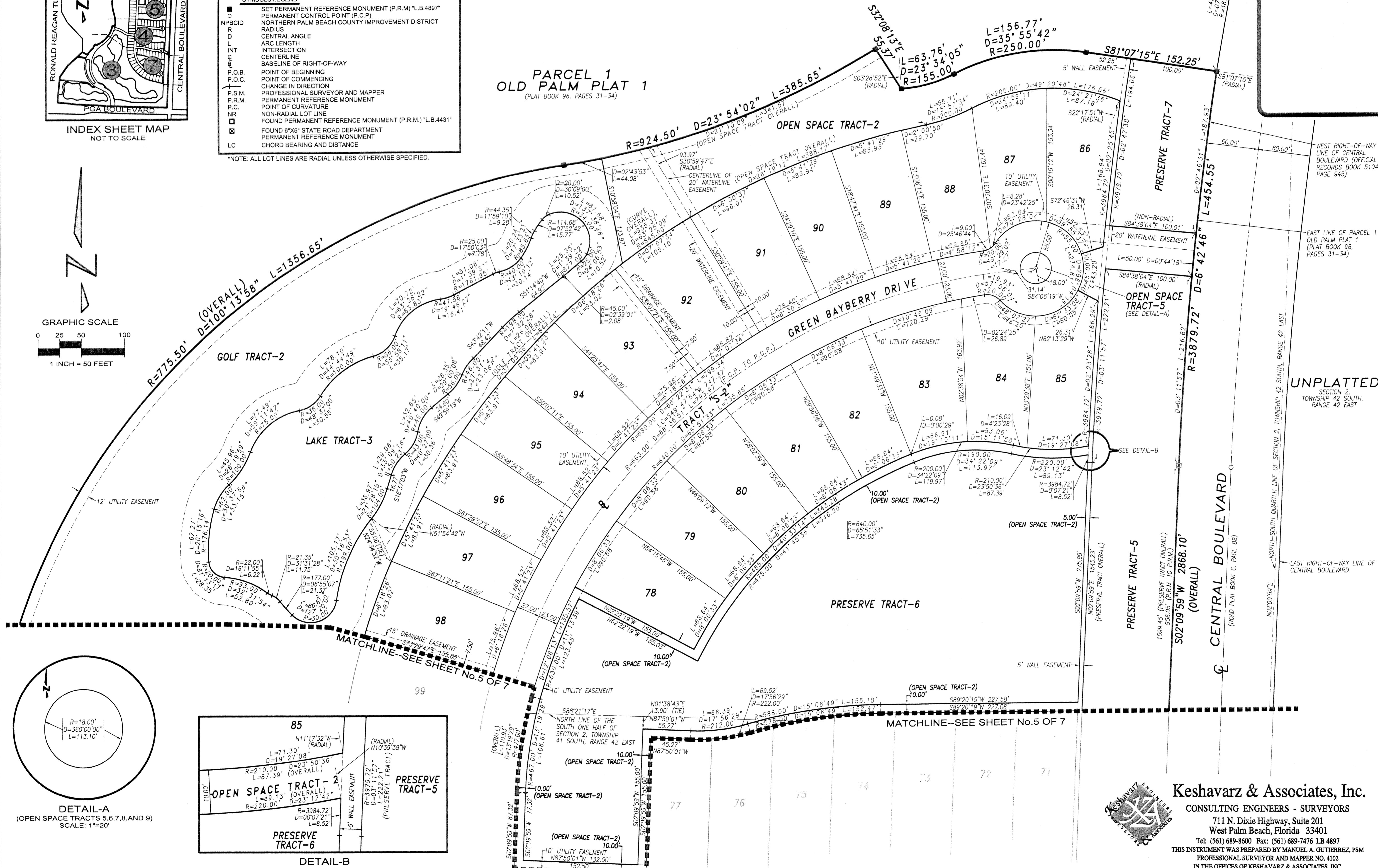
SYMBOLS LEGEND

- SET PERMANENT REFERENCE MONUMENT (P.R.M.) "L.B.4897"
- PERMANENT CONTROL POINT (P.C.P.)
- NPBCID NORTHERN PALM BEACH COUNTY IMPROVEMENT DISTRICT
- R RADIUS
- D CENTRAL ANGLE
- L ARC LENGTH
- INT INTERSECTION
- CG CENTERLINE
- RFW BASELINE OF RIGHT-OF-WAY
- P.O.B. POINT OF BEGINNING
- P.O.C. POINT OF COMMENCING
- CD CHANGE IN DIRECTION
- PSM PROFESSIONAL SURVEYOR AND MAPPER
- P.R.M. PERMANENT REFERENCE MONUMENT
- P.C. POINT OF CURVATURE
- NR NON-RADIAL LOT LINE
- FOUND PERMANENT REFERENCE MONUMENT (P.R.M.) "L.B.4431"
- ⊠ FOUND 6"X8" STATE ROAD DEPARTMENT PERMANENT REFERENCE MONUMENT
- LC CHORD BEARING AND DISTANCE

NOTE: ALL LOT LINES ARE RADIAL UNLESS OTHERWISE SPECIFIED.



PARCEL 1 OLD PALM PLAT 1 (PLAT BOOK 96, PAGES 31-34)



UNPLATTED SECTION 2, TOWNSHIP 42 SOUTH, RANGE 42 EAST

Keshavarz & Associates, Inc.
 CONSULTING ENGINEERS - SURVEYORS
 711 N. Dixie Highway, Suite 201
 West Palm Beach, Florida 33401
 Tel: (561) 689-8600 Fax: (561) 689-7476 LB 4897
 THIS INSTRUMENT WAS PREPARED BY MANUEL A. GUTIERREZ, PSM
 PROFESSIONAL SURVEYOR AND MAPPER NO. 4102
 IN THE OFFICES OF KESHAVARZ & ASSOCIATES, INC.