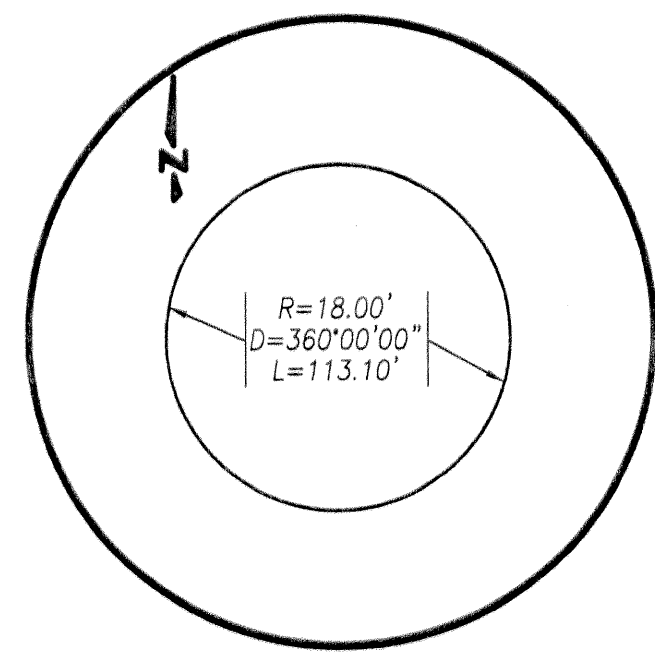
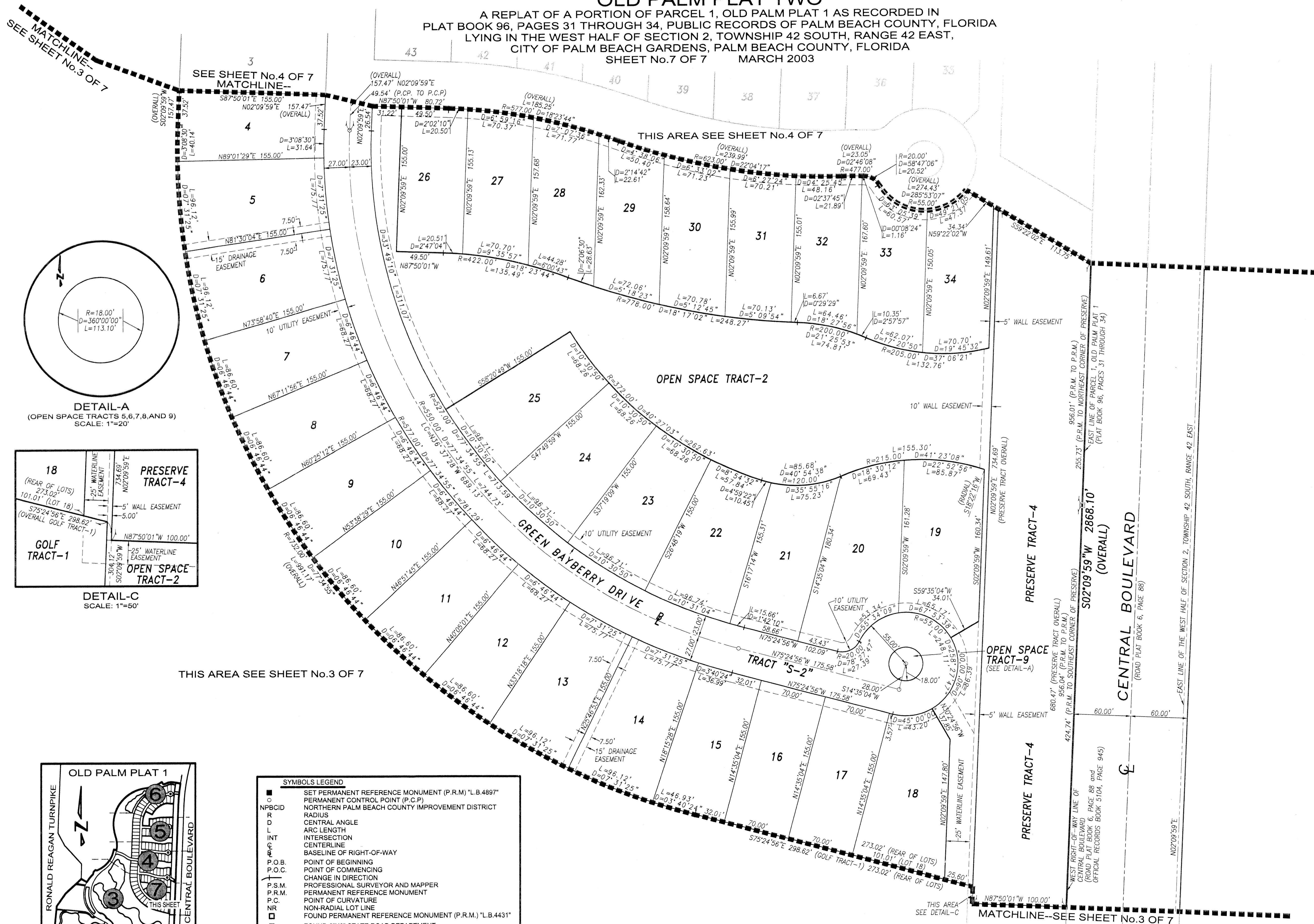
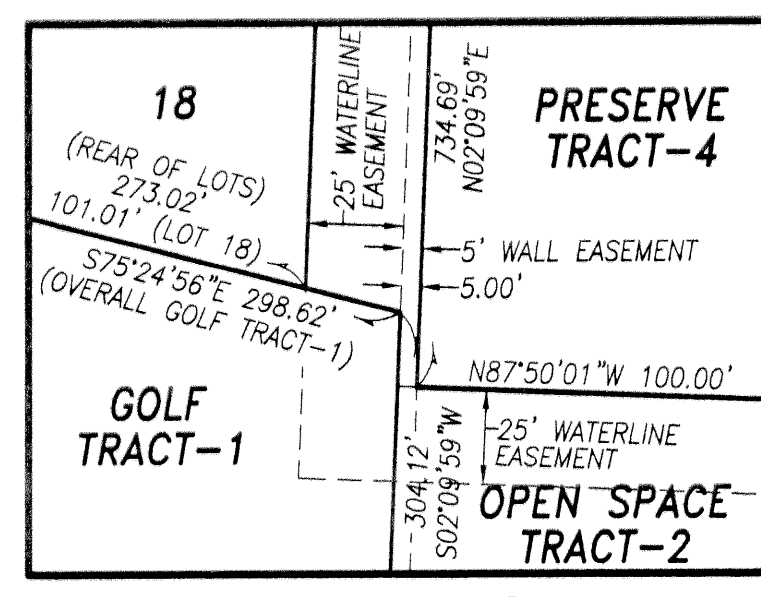


OLD PALM PLAT TWO

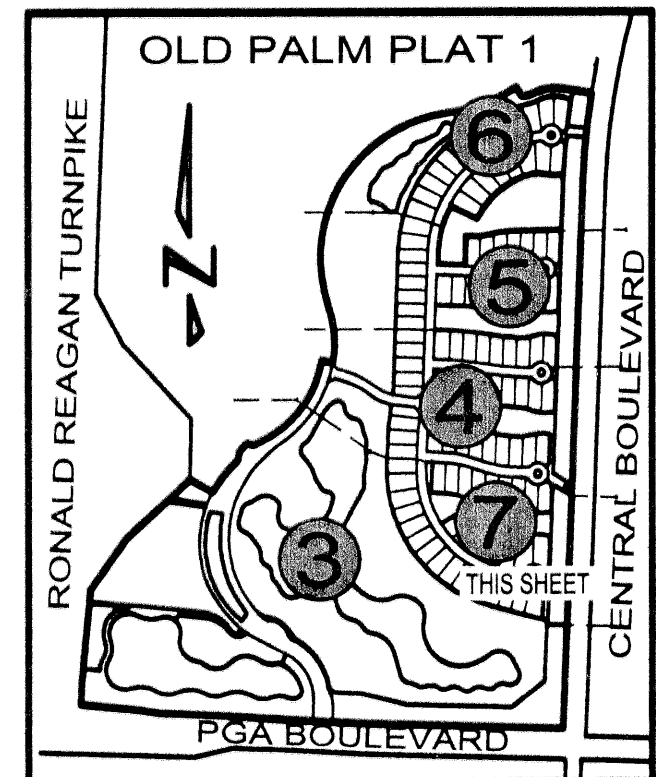
A REPLAT OF A PORTION OF PARCEL 1, OLD PALM PLAT 1 AS RECORDED IN PLAT BOOK 96, PAGES 31 THROUGH 34, PUBLIC RECORDS OF PALM BEACH COUNTY, FLORIDA LYING IN THE WEST HALF OF SECTION 2, TOWNSHIP 42 SOUTH, RANGE 42 EAST, CITY OF PALM BEACH GARDENS, PALM BEACH COUNTY, FLORIDA SHEET No.7 OF 7 MARCH 2003



DETAIL-A (OPEN SPACE TRACTS 5,6,7,8,AND 9) SCALE: 1"=20'



DETAIL-C SCALE: 1"=50'

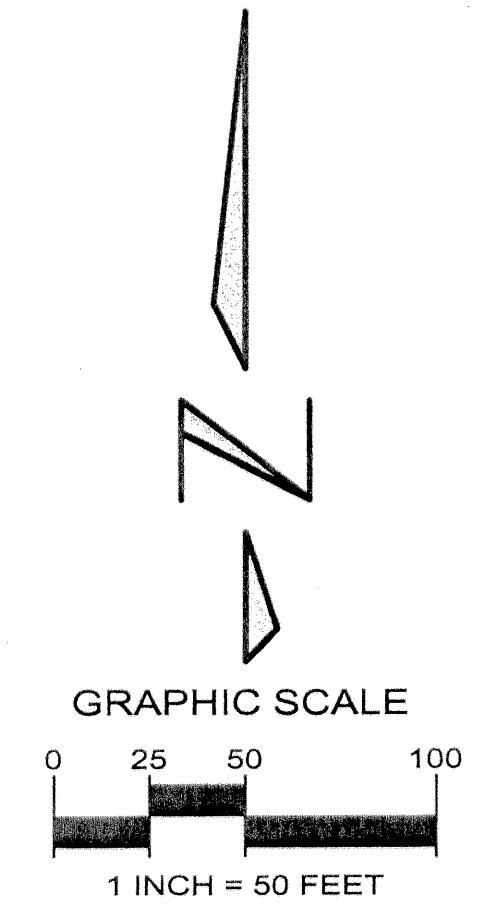


INDEX SHEET MAP NOT TO SCALE

**SYMBOLS LEGEND**

- SET PERMANENT REFERENCE MONUMENT (P.R.M.) "L.B.4897"
- PERMANENT CONTROL POINT (P.C.P)
- NPBCID NORTHERN PALM BEACH COUNTY IMPROVEMENT DISTRICT
- R RADIUS
- L ARC LENGTH
- INT INTERSECTION
- CENTERLINE
- BASELINE OF RIGHT-OF-WAY
- P.O.B. POINT OF BEGINNING
- P.O.C. POINT OF COMMENCING
- CHANGE IN DIRECTION
- P.S.M. PROFESSIONAL SURVEYOR AND MAPPER
- P.R.M. PERMANENT REFERENCE MONUMENT
- P.C. POINT OF CURVATURE
- NR NON-RADIAL LOT LINE
- FOUND PERMANENT REFERENCE MONUMENT (P.R.M.) "L.B.4431"
- ⊠ FOUND 6"x6" STATE ROAD DEPARTMENT PERMANENT REFERENCE MONUMENT
- LC CHORD BEARING AND DISTANCE

\*NOTE: ALL LOT LINES ARE RADIAL UNLESS OTHERWISE SPECIFIED.



**Keshavarz & Associates, Inc.**  
 CONSULTING ENGINEERS - SURVEYORS  
 711 N. Dixie Highway, Suite 201  
 West Palm Beach, Florida 33401  
 Tel: (561) 689-8600 Fax: (561) 689-7476 LB 4897  
 THIS INSTRUMENT WAS PREPARED BY MANUEL A. GUTIERREZ, PSM  
 PROFESSIONAL SURVEYOR AND MAPPER NO. 4102  
 IN THE OFFICES OF KESHAVARZ & ASSOCIATES, INC.