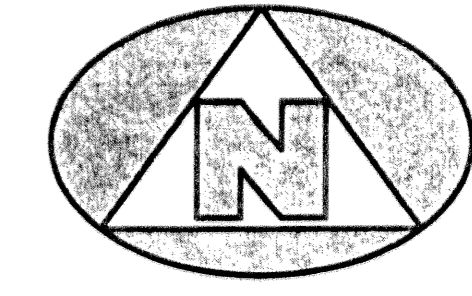


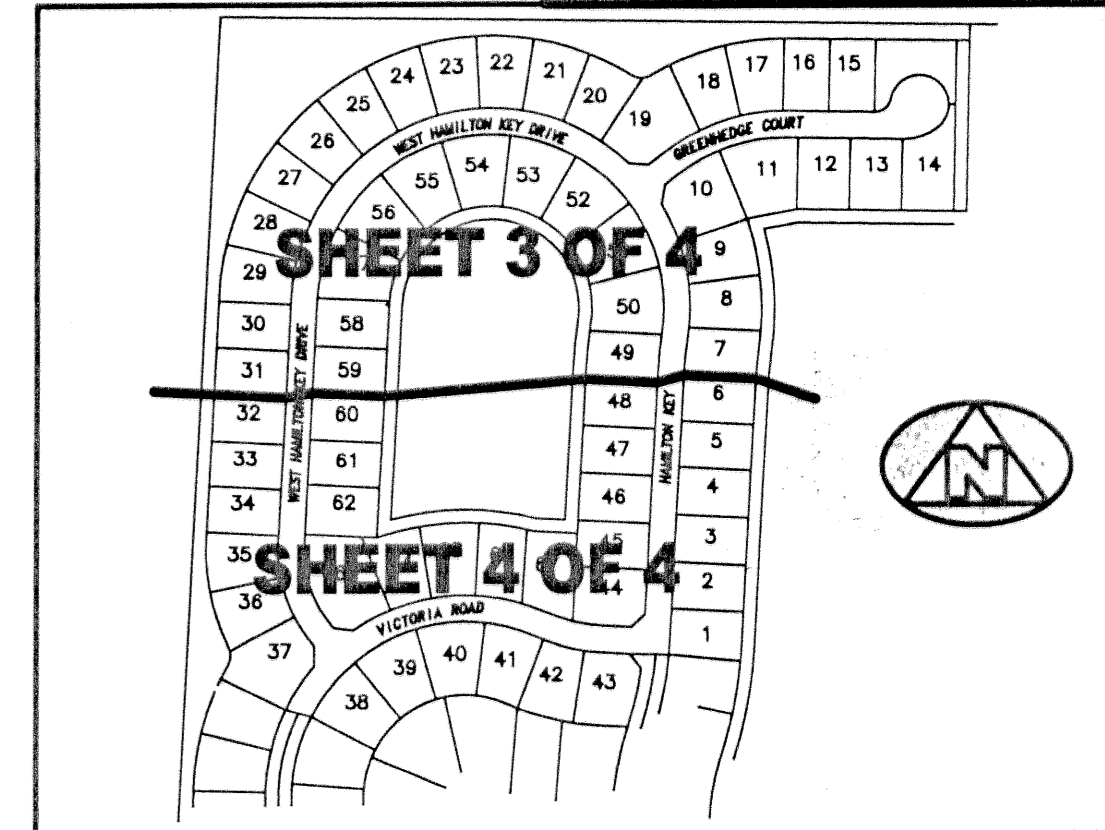
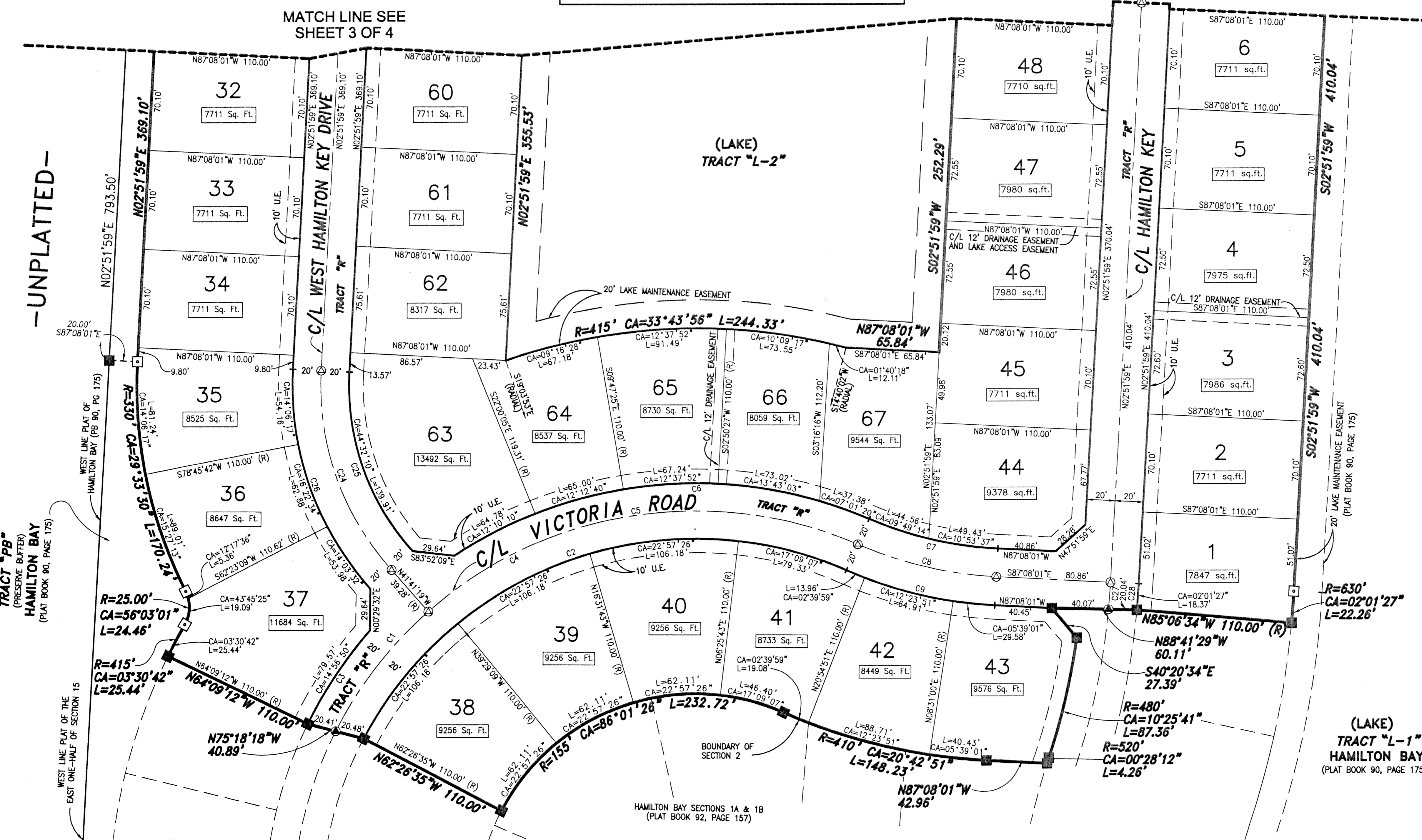
(A PART OF HAMILTON BAY/ THE RENAISSANCE RESIDENTIAL PLANNED DEVELOPMENT) BEING A REPLAT OF SECTION 2, HAMILTON BAY, RECORDED IN PLAT BOOK 90, PAGE 175, PUBLIC RECORDS, PALM BEACH COUNTY, FLORIDA AND LYING IN SECTION 15, TOWNSHIP 43 SOUTH, RANGE 42 EAST, CITY OF WEST PALM BEACH, PALM BEACH COUNTY, FLORIDA



0 20' 40' 80'  
GRAPHIC SCALE  
(IN FEET)

CURVE TABLE					
C1	R=285'	CA=21°40'16"	L=107.80'	LCB=N37°28'33"E	CHD=107.15'
C2	R=265'	CA=86°01'26"	L=397.87'	LCB=N70°34'07"E	CHD=361.54'
C3	R=305'	CA=14°56'50"	L=79.57'	LCB=N33°19'13"E	CHD=79.34'
C4	R=285'	CA=86°01'26"	L=397.87'	LCB=N70°34'07"E	CHD=361.54'
C5	R=285'	CA=86°01'26"	L=397.87'	LCB=N70°34'07"E	CHD=361.54'
C6	R=305'	CA=14°56'50"	L=79.57'	LCB=N33°19'13"E	CHD=79.34'
C7	R=285'	CA=86°01'26"	L=397.87'	LCB=N70°34'07"E	CHD=361.54'
C8	R=285'	CA=86°01'26"	L=397.87'	LCB=N70°34'07"E	CHD=361.54'
C9	R=305'	CA=14°56'50"	L=79.57'	LCB=N33°19'13"E	CHD=79.34'
C10	R=285'	CA=86°01'26"	L=397.87'	LCB=N70°34'07"E	CHD=361.54'
C11	R=285'	CA=86°01'26"	L=397.87'	LCB=N70°34'07"E	CHD=361.54'
C12	R=305'	CA=14°56'50"	L=79.57'	LCB=N33°19'13"E	CHD=79.34'
C13	R=285'	CA=86°01'26"	L=397.87'	LCB=N70°34'07"E	CHD=361.54'
C14	R=285'	CA=86°01'26"	L=397.87'	LCB=N70°34'07"E	CHD=361.54'
C15	R=305'	CA=14°56'50"	L=79.57'	LCB=N33°19'13"E	CHD=79.34'
C16	R=285'	CA=86°01'26"	L=397.87'	LCB=N70°34'07"E	CHD=361.54'
C17	R=285'	CA=86°01'26"	L=397.87'	LCB=N70°34'07"E	CHD=361.54'
C18	R=520'	CA=02°01'27"	L=18.37'	LCB=S03°52'42"W	CHD=18.37'

MATCH LINE SEE SHEET 3 OF 4



- LEGEND:**
- (R) DENOTES A RADIAL LINE
  - C/L DENOTES A CENTERLINE
  - U.E. DENOTES UTILITY EASEMENT
  - R DENOTES RADIUS DISTANCE
  - L DENOTES ARC LENGTH DISTANCE
  - CA DENOTES CENTRAL ANGLE
  - LCB DENOTES LONG CHORD BEARING
  - CHD DENOTES CHORD DISTANCE
  - ORB DENOTES OFFICIAL RECORDS BOOK
  - PB DENOTES PLAT BOOK NUMBER
  - PG DENOTES PAGE NUMBER
  - PCP DENOTES PERMANENT CONTROL POINT
  - PRM DENOTES PERMANENT REFERENCE MONUMENT
  - DENOTES A SET PERMANENT REFERENCE MONUMENT (NO. 2424)
  - DENOTES A FOUND PERMANENT REFERENCE MONUMENT (NO. 2424)
  - DENOTES A SET PERMANENT CONTROL POINT (NO. 2424)
  - DENOTES A FOUND PERMANENT CONTROL POINT (NO. 2424)

- SURVEYOR'S NOTES:**
- THE BASE BEARING, AS SHOWN HEREON, IS S00°46'29"W ALONG THE EAST BOUNDARY OF SECTION 2 AS SHOWN ON THE PLAT OF HAMILTON BAY, AS RECORDED IN PLAT BOOK 90, PAGE 175, PUBLIC RECORDS, PALM BEACH COUNTY, FLORIDA.
  - IN THOSE INSTANCES WHERE UTILITY OR DRAINAGE STRUCTURES ARE CONSTRUCTED IN CONFLICT WITH THE PLATTED PERMANENT CONTROL POINT POSITION STRADDLERS MONUMENTED AS PERMANENT CONTROL POINTS WILL BE SET TO REFERENCE THE PLATTED POSITION.
  - INES THAT INTERSECT CURVES ARE NOT RADIAL UNLESS OTHERWISE NOTED.
  - THIS INSTRUMENT WAS PREPARED BY WM. R. VAN CAMPEN, P.S.M. NO. 2424, IN AND FOR THE OFFICES OF BENCH MARK LAND SURVEYING & MAPPING, INC., 4152 WEST BLUE HERON BOULEVARD, SUITE 121, RIVIERA BEACH, FLORIDA, 33407

**BENCH MARK LAND SURVEYING & MAPPING, INC.**  
 4152 W. BLUE HERON BOULEVARD, SUITE 121  
 RIVIERA BEACH, FLORIDA 33404  
 PHONE: (561) 848-2102 • LB. 2171 • FAX: (561) 844-9659  
 EMAIL: bmlsm@aol.com WEB: http://members.aol.com/bmlsm

RECORD PLAT  
**HAMILTON BAY SECTION 2**