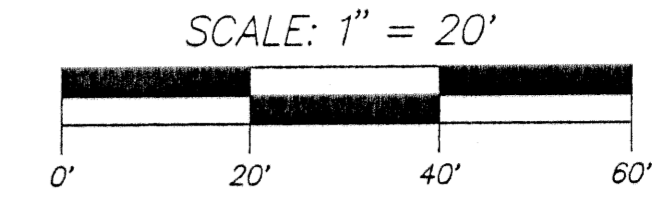


SEABREEZE ISLES

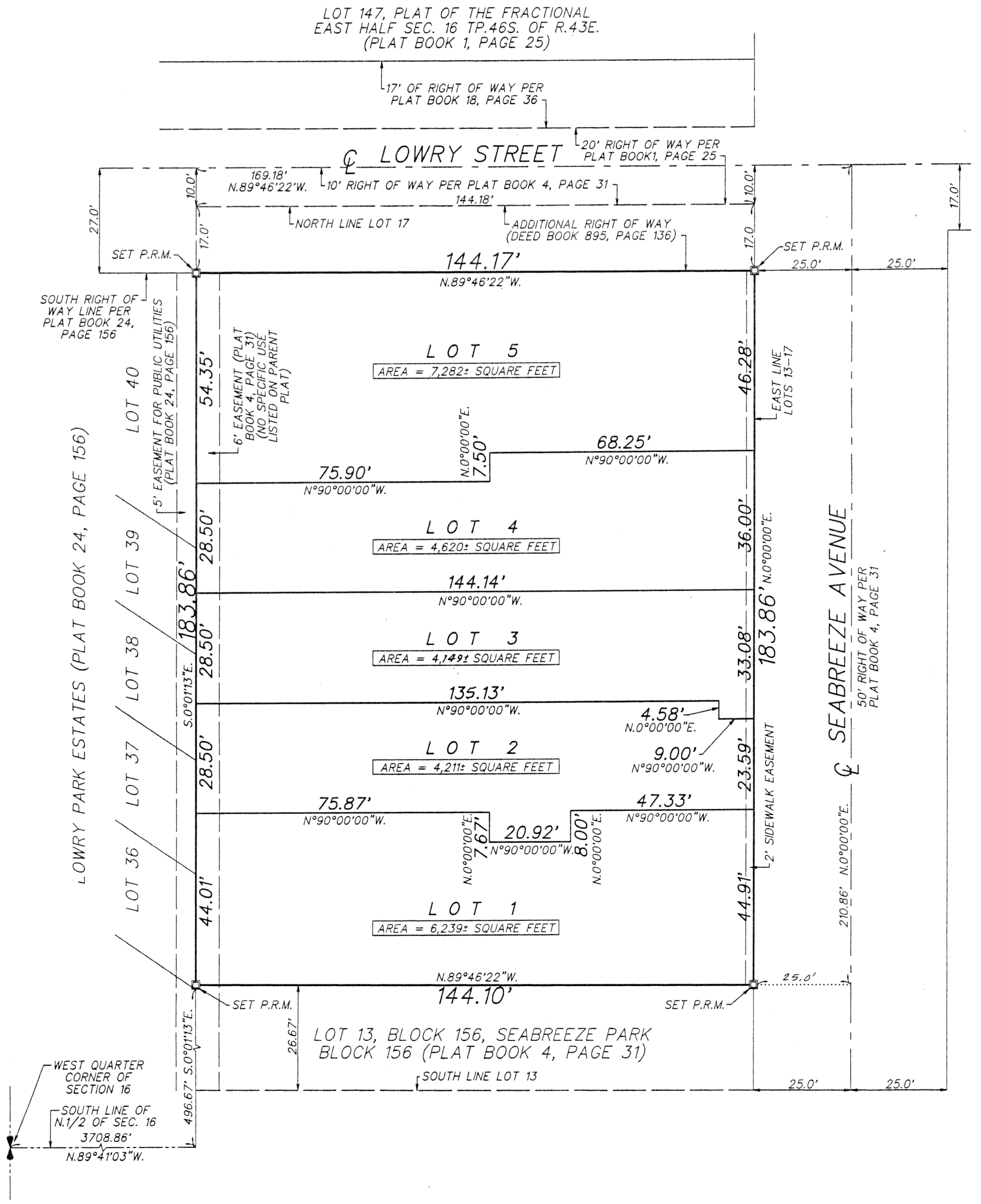
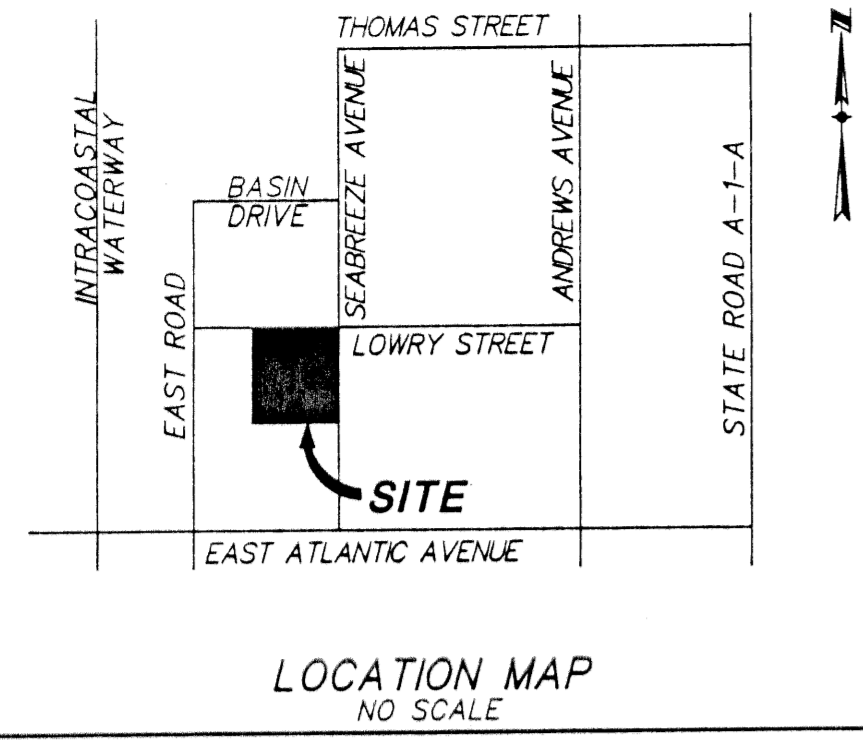
BEING A REPLAT OF A PORTION OF LOTS 13, 14, 15, 16 AND 17, BLOCK 156, SEABREEZE PARK BLOCK 156 (PLAT BOOK 4, PAGE 31), SECTION 16, TOWNSHIP 46 SOUTH, RANGE 43 EAST, CITY OF DELRAY BEACH, PALM BEACH COUNTY, FLORIDA

AUGUST, 2002
SHEET 2 OF 2



COUNTY OF PALM BEACH
STATE OF FLORIDA

THIS PLAT WAS FILED FOR RECORD AT _____
THIS _____ DAY OF _____
20_____, AND DULY RECORDED IN PLAT BOOK NO. _____
ON PAGE _____
DOROTHY H. WILKEN, CLERK OF CIRCUIT COURT
BY _____ D.C.



LEGEND:
C = CENTERLINE
P.R.M. = PERMANENT REFERENCE MONUMENT (4"x4" CONCRETE MONUMENT STAMPED "PRM 050 353")
T.R. = TOWNSHIP
R. = RANGE

BLOCK 156, SEABREEZE PARK
BLOCK 156 (PLAT BOOK 4, PAGE 31)