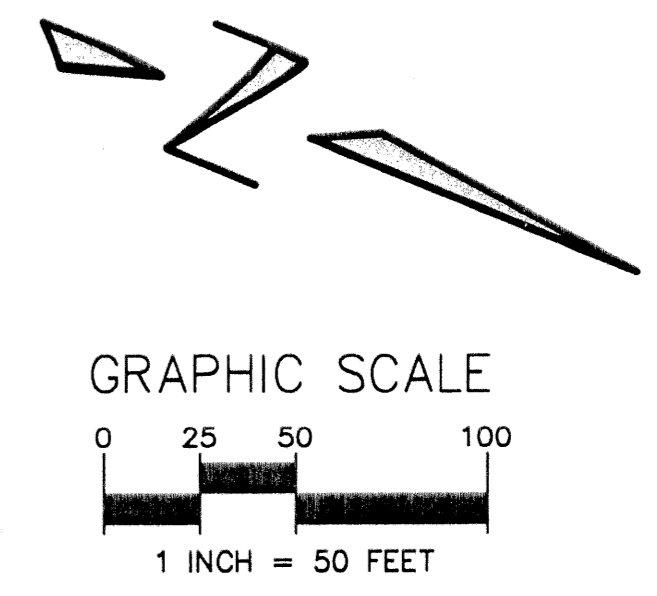
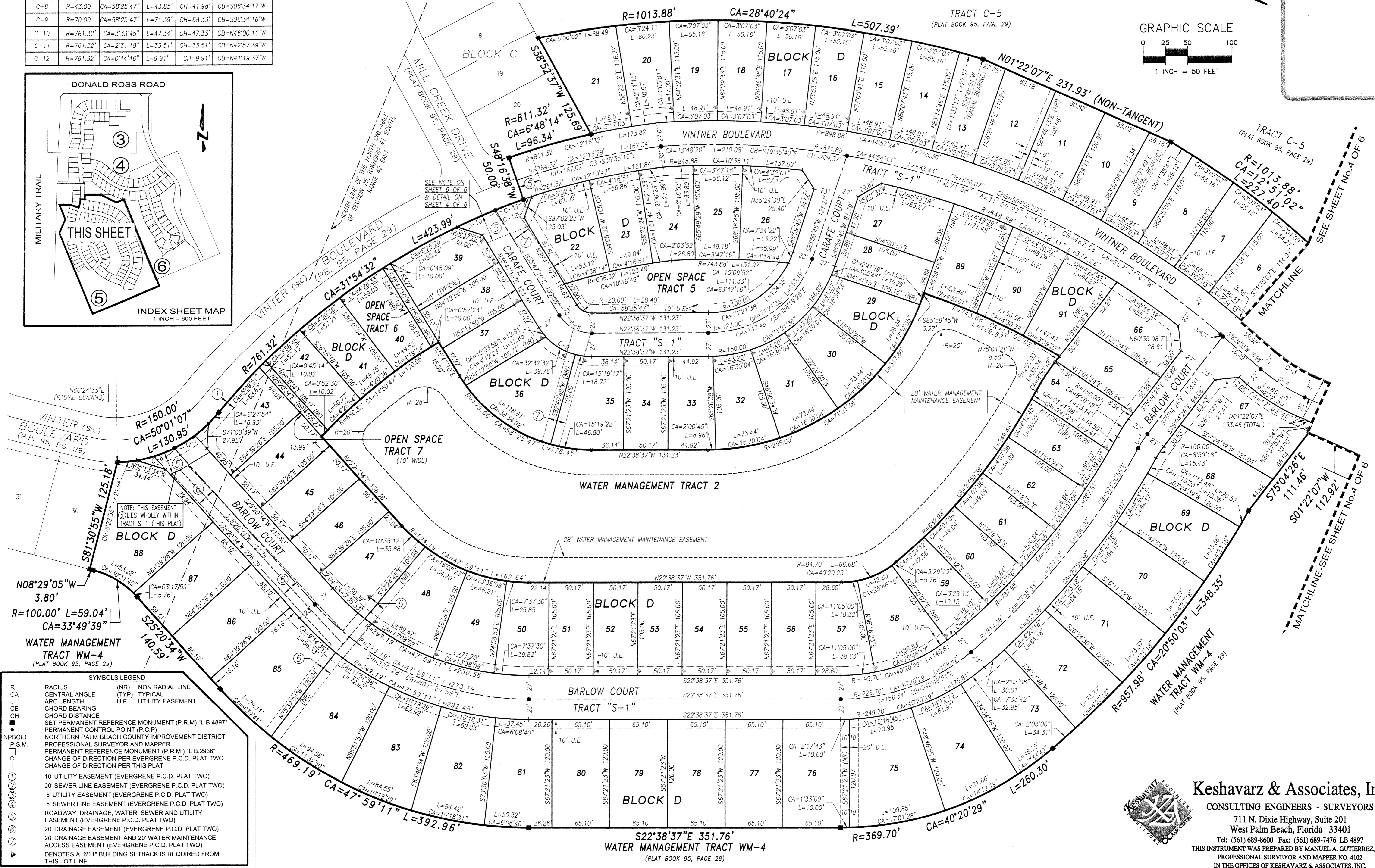
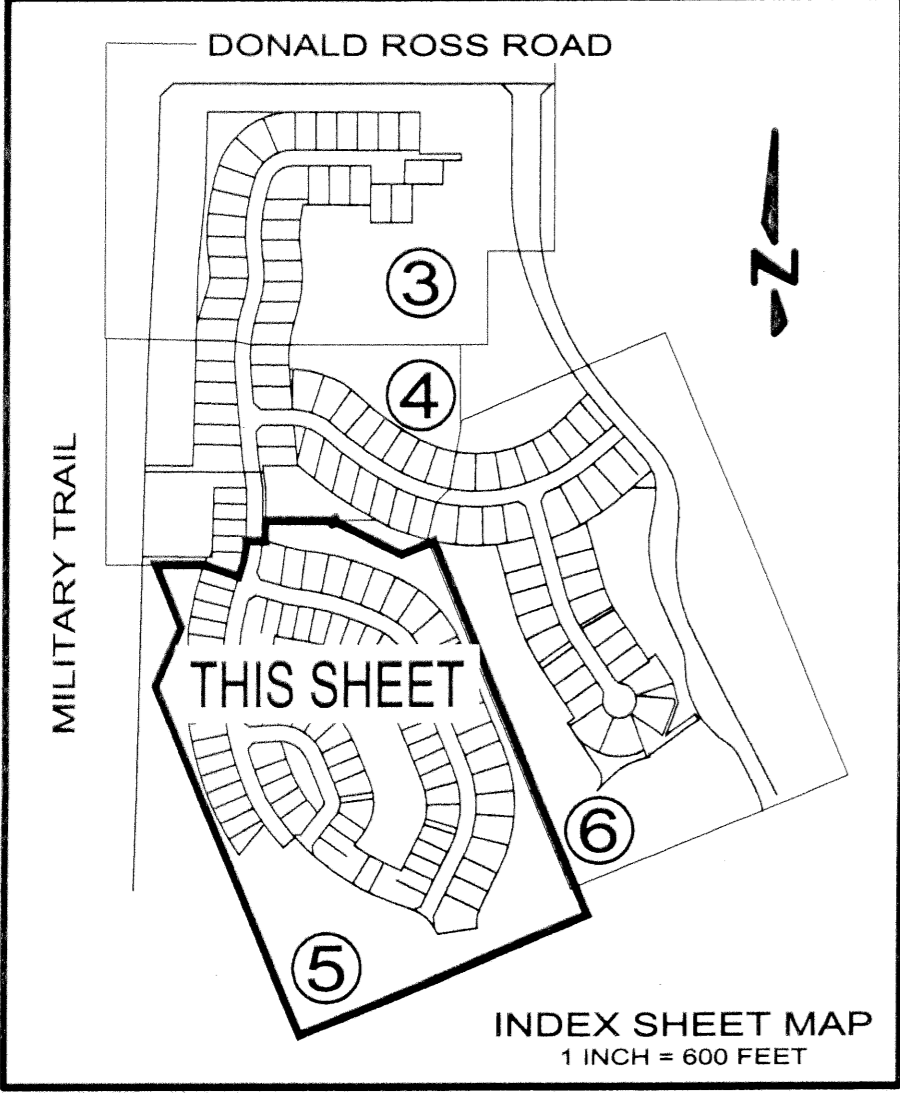


EVERGRENE P.C.D. PLAT SIX

A REPLAT OF TRACT F-8 AND WATER MANAGEMENT TRACT WM-5, EVERGRENE PLAT TWO AS RECORDED IN PLAT BOOK 95, PAGES 29 THROUGH 54 INCLUSIVE, PUBLIC RECORDS OF PALM BEACH COUNTY, FLORIDA LYING IN THE EAST ONE-HALF OF SECTION 25, TOWNSHIP 41 SOUTH, RANGE 42 EAST, CITY OF PALM BEACH GARDENS, PALM BEACH COUNTY, FLORIDA
SHEET 5 OF 6 MARCH 2003



CURVE TABLE					
CURVE NUMBER	RADIUS	CENTRAL ANGLE	ARC LENGTH	CHORD	CHORD BEARING
C-3	R=172.50'	CA=17°02'46"	L=51.32'	CH=51.13'	CB=S09°53'30"W
C-4	R=199.50'	CA=17°02'46"	L=59.35'	CH=59.13'	CB=N09°53'30"E
C-5	R=123.00'	CA=8°50'18"	L=18.97'	CH=18.95'	CB=S79°29'35"E
C-6	R=150.00'	CA=17°01'33"	L=44.57'	CH=44.41'	CB=N40°29'08"W
C-7	R=150.00'	CA=18°08'44"	L=47.51'	CH=47.31'	CB=N58°04'16"W
C-8	R=43.00'	CA=58°25'47"	L=43.85'	CH=41.98'	CB=S06°34'17"W
C-9	R=70.00'	CA=58°25'47"	L=71.39'	CH=68.33'	CB=S06°34'16"W
C-10	R=761.32'	CA=3°33'45"	L=47.34'	CH=47.33'	CB=N46°00'11"W
C-11	R=761.32'	CA=2°31'18"	L=33.51'	CH=33.51'	CB=N42°57'39"W
C-12	R=761.32'	CA=0°44'46"	L=9.91'	CH=9.91'	CB=N41°19'37"W



SYMBOLS LEGEND

R	RADIUS	(NR)	NON RADIAL LINE
CA	CENTRAL ANGLE	(TYP)	TYPICAL
L	ARC LENGTH	U.E.	UTILITY EASEMENT
CB	CHORD BEARING		
CH	CHORD DISTANCE		
■	SET PERMANENT REFERENCE MONUMENT (P.R.M.)	"L.B. 4897"	PERMANENT CONTROL POINT (P.C.P.)
□	NORTHERN PALM BEACH COUNTY IMPROVEMENT DISTRICT PROFESSIONAL SURVEYOR AND MAPPER PERMANENT REFERENCE MONUMENT (P.R.M.)	"L.B. 2936"	CHANGE OF DIRECTION PER EVERGRENE P.C.D. PLAT TWO
○	CHANGE OF DIRECTION PER THIS PLAT		
①	10' UTILITY EASEMENT (EVERGRENE P.C.D. PLAT TWO)		
②	20' SEWER LINE EASEMENT (EVERGRENE P.C.D. PLAT TWO)		
③	5' UTILITY EASEMENT (EVERGRENE P.C.D. PLAT TWO)		
④	5' SEWER LINE EASEMENT (EVERGRENE P.C.D. PLAT TWO)		
⑤	ROADWAY, DRAINAGE, WATER, SEWER AND UTILITY EASEMENT (EVERGRENE P.C.D. PLAT TWO)		
⑥	20' DRAINAGE EASEMENT (EVERGRENE P.C.D. PLAT TWO)		
⑦	20' DRAINAGE EASEMENT AND 20' WATER MAINTENANCE ACCESS EASEMENT (EVERGRENE P.C.D. PLAT TWO)		
▲	DENOTES A 8"11" BUILDING SETBACK FROM THIS LOT LINE.		

*NOTE: ALL LOT LINES ARE RADIAL UNLESS OTHERWISE SPECIFIED.

Keshavarz & Associates, Inc.
CONSULTING ENGINEERS - SURVEYORS
711 N. Dixie Highway, Suite 201
West Palm Beach, Florida 33401
Tel: (561) 689-8600 Fax: (561) 689-7476 LB 4897
THIS INSTRUMENT WAS PREPARED BY MANUEL A. GUTIERREZ, PSM
PROFESSIONAL SURVEYOR AND MAPPER NO. 4102
IN THE OFFICES OF KESHAVARZ & ASSOCIATES, INC.