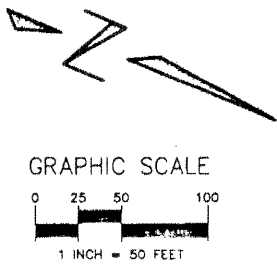
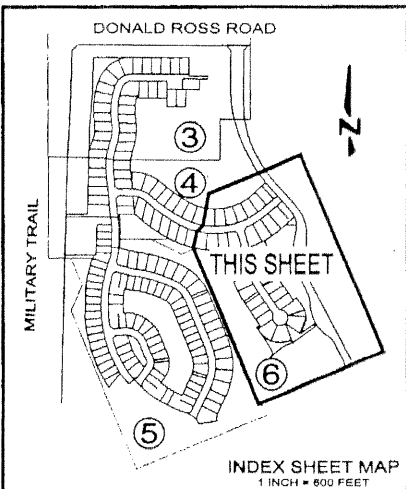


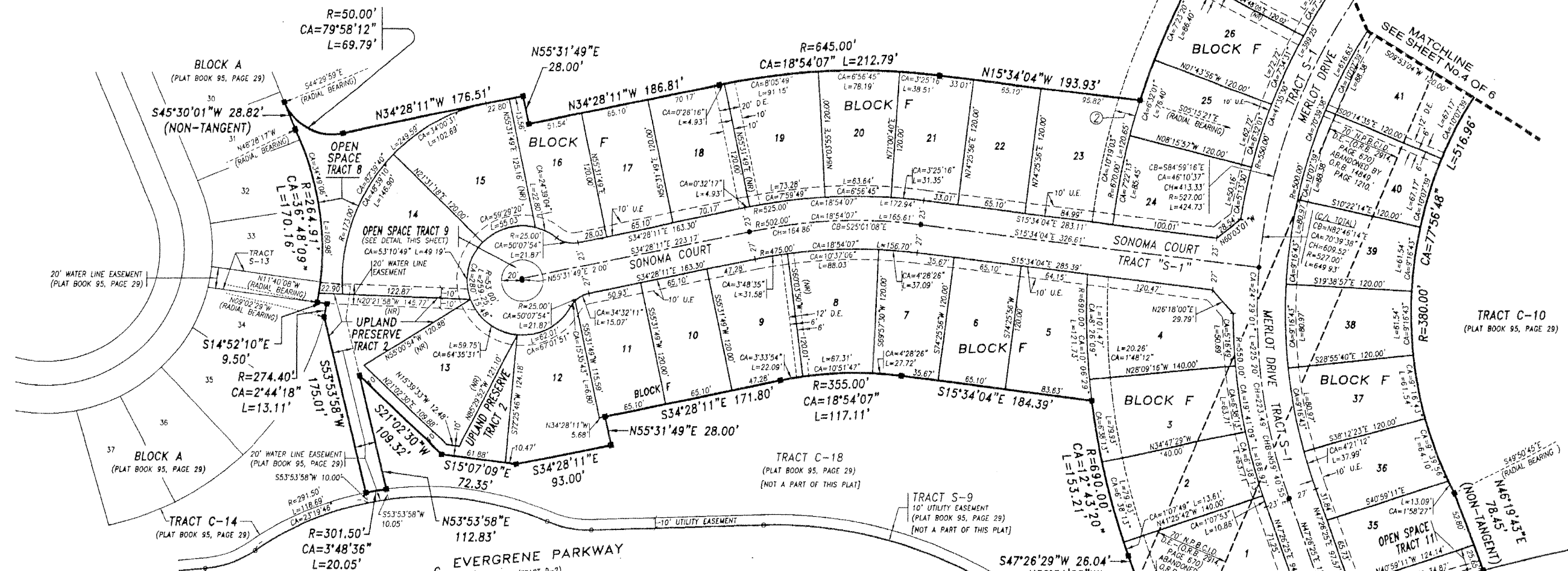
# EVERGRENE P.C.D. PLAT SIX

A REPLAT OF TRACT F-8 AND WATER MANAGEMENT TRACT WM-5, EVERGRENE PLAT TWO AS RECORDED IN PLAT BOOK 95, PAGES 29 THROUGH 54 INCLUSIVE, PUBLIC RECORDS OF PALM BEACH COUNTY, FLORIDA LYING IN THE EAST ONE-HALF OF SECTION 25, TOWNSHIP 41 SOUTH, RANGE 42 EAST, CITY OF PALM BEACH GARDENS, PALM BEACH COUNTY, FLORIDA SHEET 6 OF 6 MARCH 2003



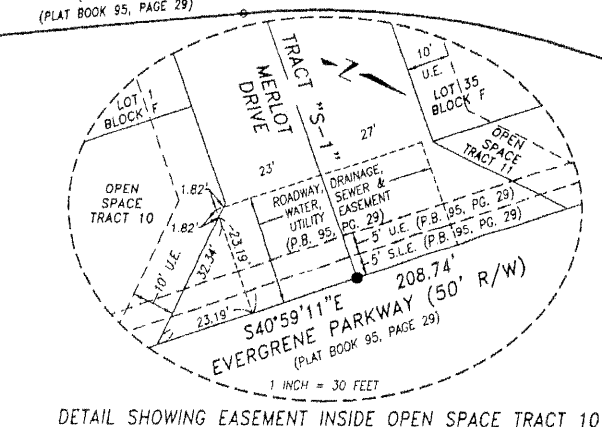
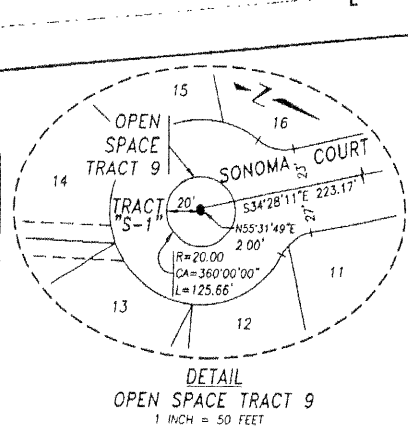
(PLAT BOOK 95, PAGE 29)

WATER MANAGEMENT TRACT WM-4  
(PLAT BOOK 95, PAGE 29)



**SYMBOLS LEGEND**

CA	RADIUS	(NR)	NON RADIAL LINE
R	CENTRAL ANGLE	(TYP)	TYPICAL
L	ARC LENGTH		
CB	CHORD BEARING	U.E.	UTILITY EASEMENT
CH	CHORD DISTANCE		
+	SET PERMANENT REFERENCE MONUMENT (P.R.M.) "L.B. 4897"		
+	PERMANENT CONTROL POINT (P.C.P.)		
+	NORTHERN PALM BEACH COUNTY IMPROVEMENT DISTRICT PROFESSIONAL SURVEYOR AND MAPPER		
+	PERMANENT REFERENCE MONUMENT (P.R.M.) "L.B. 2636"		
+	CHANGE OF DIRECTION PER EVERGRENE P.C.D. PLAT TWO		
+	CHANGE OF DIRECTION PER THIS PLAT		
○	10' UTILITY EASEMENT (EVERGRENE P.C.D. PLAT TWO)		
○	20' SEWER LINE EASEMENT (EVERGRENE P.C.D. PLAT TWO)		
○	5' UTILITY EASEMENT (EVERGRENE P.C.D. PLAT TWO)		
○	5' SEWER LINE EASEMENT (EVERGRENE P.C.D. PLAT TWO)		
○	ROADWAY, DRAINAGE, WATER, SEWER AND UTILITY EASEMENT (EVERGRENE P.C.D. PLAT TWO)		
○	20' DRAINAGE EASEMENT (EVERGRENE P.C.D. PLAT TWO)		
○	20' DRAINAGE EASEMENT AND 20' WATER MAINTENANCE ACCESS EASEMENT (EVERGRENE P.C.D. PLAT TWO)		
○	DEMOTES A 6" BUILDING SETBACK IS REQUIRED FROM THIS LOT LINE		



70' N.P.B.C.D. DRAINAGE EASEMENT (ABANDONED PER O.R.B. 14849, PAGE 1210)



**Keshavarz & Associates, Inc.**  
CONSULTING ENGINEERS - SURVEYORS  
711 N. Dixie Highway, Suite 201  
West Palm Beach, Florida 33401  
Tel: (561) 689-9600 Fax: (561) 689-7476 LB 4897  
THIS INSTRUMENT WAS PREPARED BY MANUEL A. GUTIERREZ, PSM  
PROFESSIONAL SURVEYOR AND MAPPER NO. 4102  
IN THE OFFICES OF KESHAVARZ & ASSOCIATES, INC.  
L:\MAPS\SURV\555\_PLAT16\0401755\_PLAT\_16\_SHTS\_3-5-03.dwg 03/27/03 01:44:18 PM '03