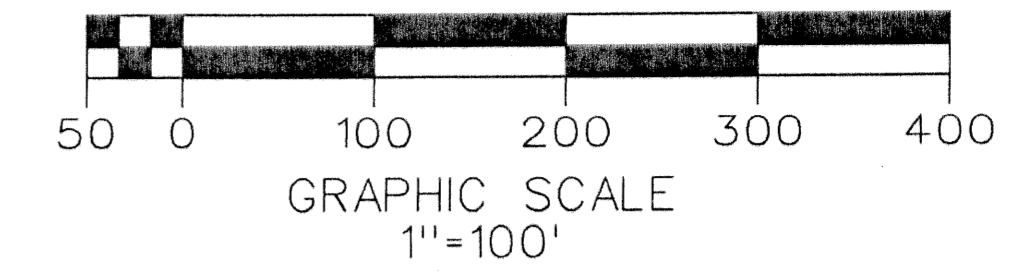
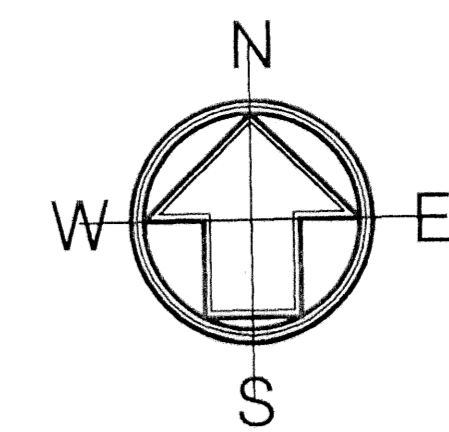


THE FARMS AT EQUESTRIAN CLUB

REPLAT OF A PORTION OF EQUESTRIAN CLUB P.U.D.
SECTION 22, TOWNSHIP 44 SOUTH, RANGE 41 EAST, VILLAGE OF WELLINGTON,
PALM BEACH COUNTY, FLORIDA

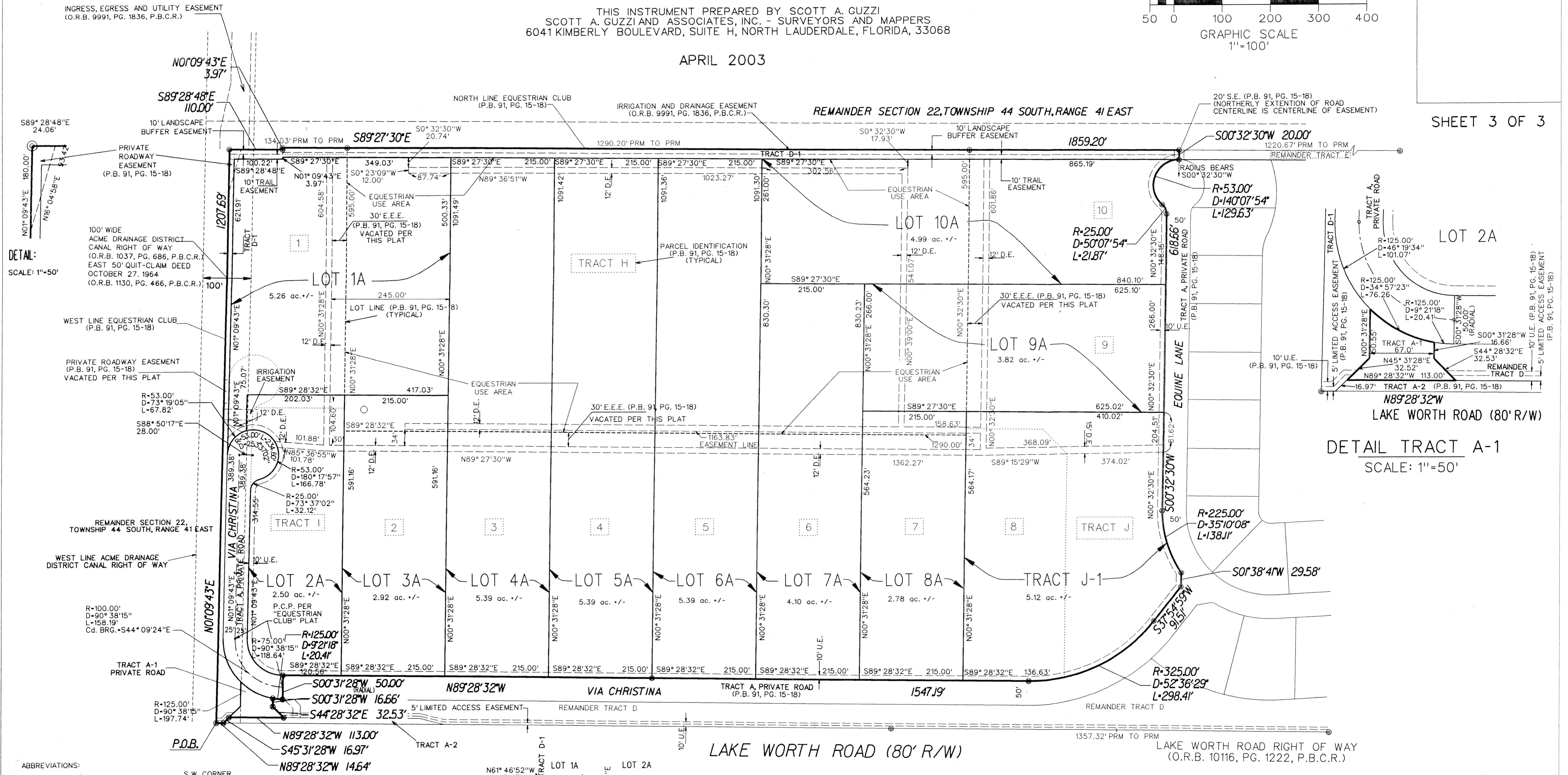
THIS INSTRUMENT PREPARED BY SCOTT A. GUZZI
SCOTT A. GUZZI AND ASSOCIATES, INC. - SURVEYORS AND MAPPERS
6041 KIMBERLY BOULEVARD, SUITE H, NORTH LAUDERDALE, FLORIDA, 33068

APRIL 2003



190

SHEET 3 OF 3



DETAIL:
SCALE: 1"=50'

DETAIL TRACT A-1
SCALE: 1"=50'

DETAIL
SCALE: 1"=50'

- ABBREVIATIONS:
- BRG. - BEARING
 - Cd - CHORD
 - D - CENTRAL (DELTA) ANGLE
 - D.E. - DRAINAGE EASEMENT
 - E - EAST
 - E.E.E. - EQUESTRIAN EXERCISE EASEMENT
 - F.S. - FLORIDA STATUTES
 - INC. - INCORPORATED
 - L - LENGTH (ARC)
 - N - NORTH
 - O.R.B. - OFFICIAL RECORDS BOOK
 - P.B. - PLAT BOOK
 - P.B.C.R. - PALM BEACH COUNTY RECORDS
 - PG. - PAGE
 - P.O.B. - POINT OF BEGINNING
 - P.C.P. - PERMANENT CONTROL POINT
 - P.R.M. - PERMANENT REFERENCE MONUMENT
 - R - RADIUS
 - R/W - RIGHT OF WAY
 - S - SOUTH
 - S.E. - SEWER EASEMENT
 - U.E. - UTILITY EASEMENT
 - W - WEST
 - W.E. - WATER EASEMENT

NOTICE: THIS PLAT, AS RECORDED IN ITS GRAPHIC FORM, IS THE OFFICIAL DEPICTION OF THE SUBDIVIDED LANDS DESCRIBED HEREIN AND WILL IN NO CIRCUMSTANCES BE SUPPLANTED IN AUTHORITY BY ANY OTHER GRAPHIC OR DIGITAL FORM OF THIS PLAT. THERE MAY BE ADDITIONAL RESTRICTIONS THAT ARE NOT RECORDED ON THE PLAT THAT MAY BE FOUND IN THE PUBLIC RECORDS OF THIS COUNTY.



SCOTT A. GUZZI & ASSOC., INC.
Surveyors and Mappers
6041 KIMBERLY BOULEVARD
SUITE H
NORTH LAUDERDALE, FLORIDA 33068

THE FARMS
AT EQUESTRIAN CLUB