

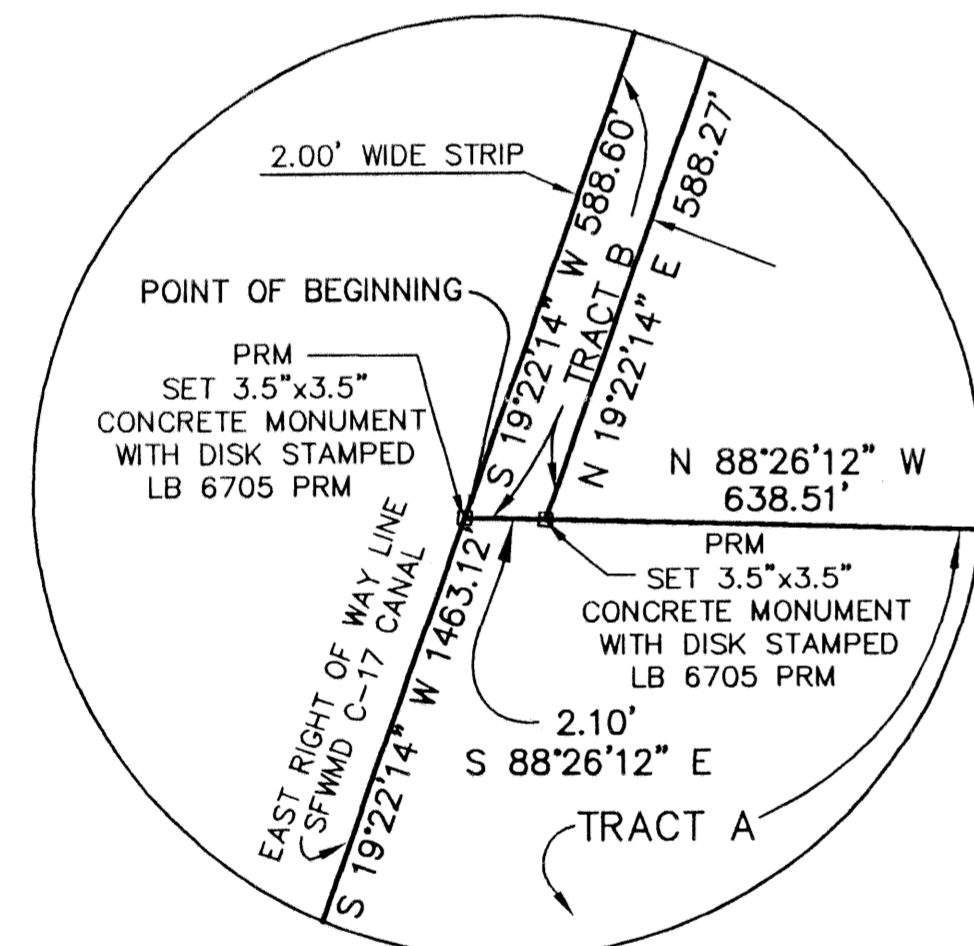
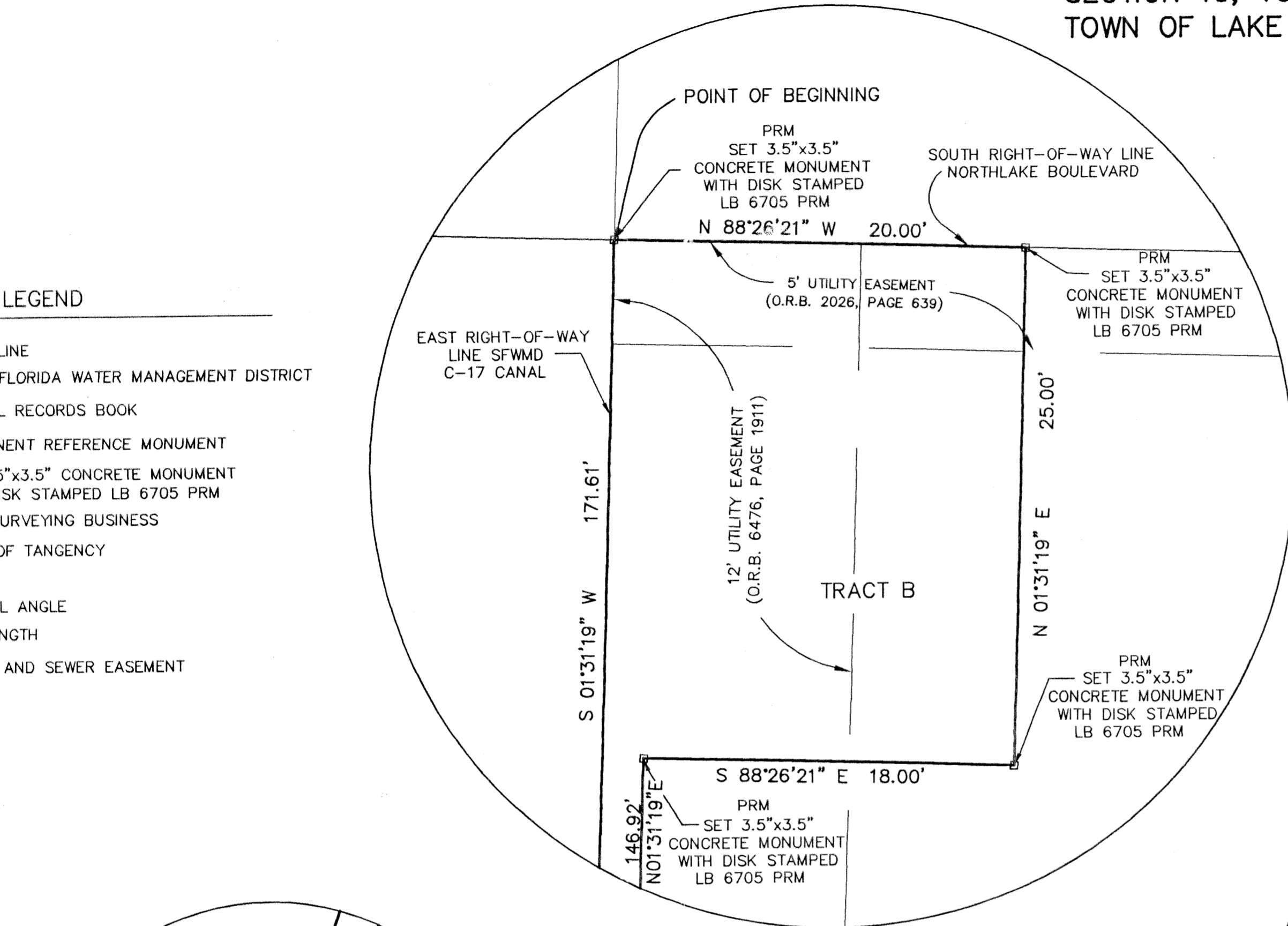
# LOWE'S OF LAKE PARK

BEING A PORTION OF  
SECTION 19, TOWNSHIP 42 SOUTH, RANGE 43 EAST  
TOWN OF LAKE PARK, PALM BEACH COUNTY, FLORIDA

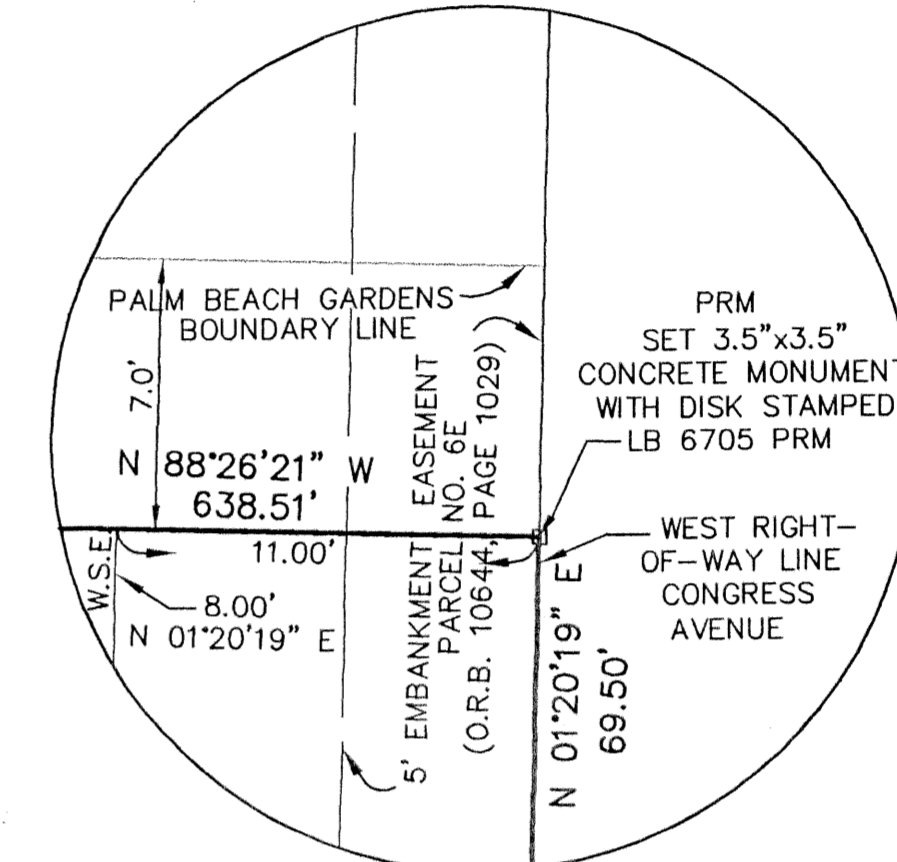
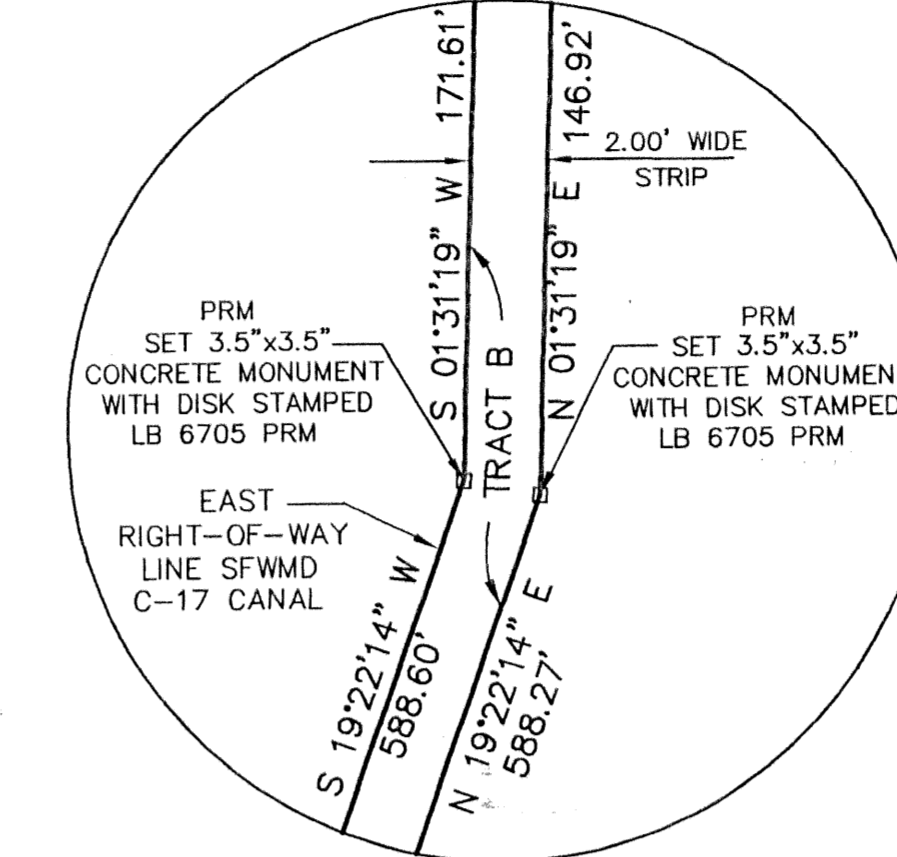
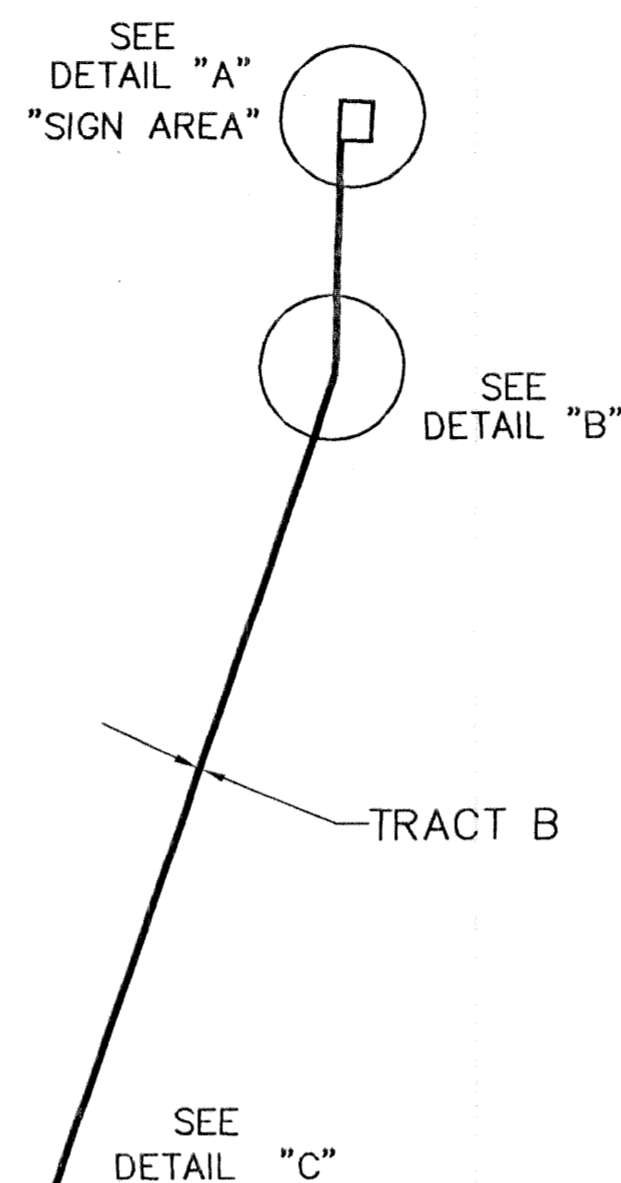
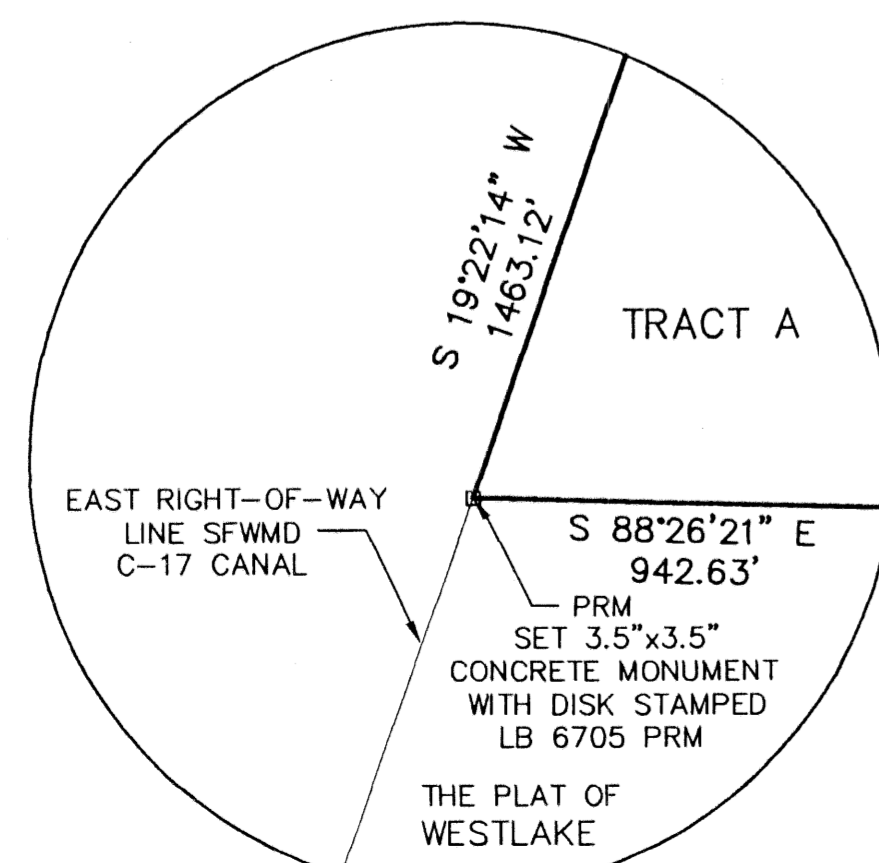
STATE OF FLORIDA  
COUNTY OF PALM BEACH  
THIS PLAT WAS FILED FOR RECORD \_\_\_\_\_ THIS \_\_\_\_\_  
DAY OF \_\_\_\_\_, 2003 AND DULY RECORDED IN  
PLAT BOOK \_\_\_\_\_ ON PAGES \_\_\_\_\_ AND \_\_\_\_\_  
DOROTHY H. WILKEN, CLERK  
BY: \_\_\_\_\_, D.C.  
CIRCUIT COURT SEAL

**LEGEND**

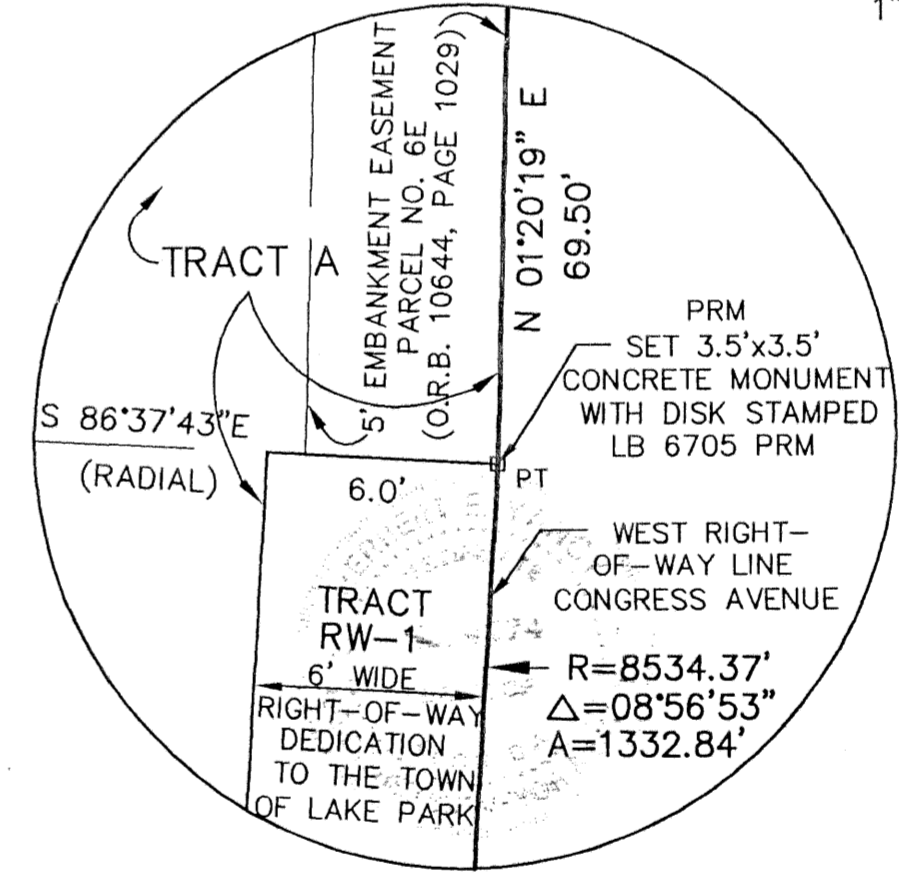
⊙	CENTERLINE
SFWM	SOUTH FLORIDA WATER MANAGEMENT DISTRICT
O.R.B.	OFFICIAL RECORDS BOOK
P.R.M.	PERMANENT REFERENCE MONUMENT
⊠	SET 3.5"x3.5" CONCRETE MONUMENT WITH DISK STAMPED LB 6705 PRM
LB	LAND SURVEYING BUSINESS
PT	POINT OF TANGENCY
R	RADIUS
△	CENTRAL ANGLE
A	ARC LENGTH
W.S.E.	WATER AND SEWER EASEMENT



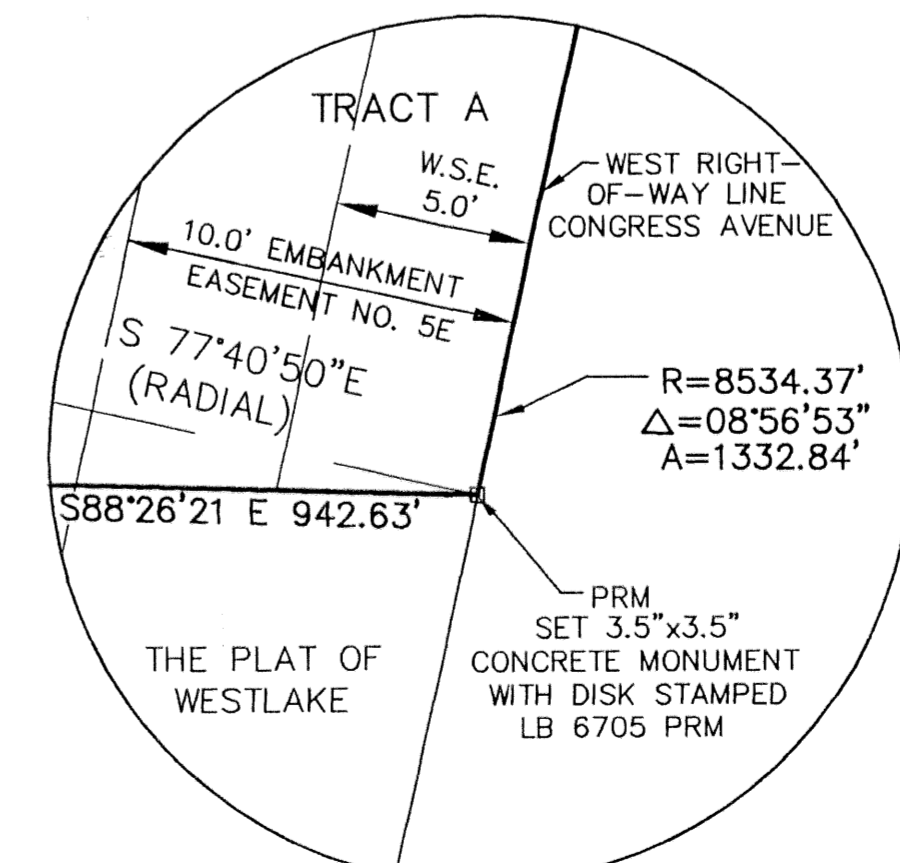
DETAIL "C"  
1" = 5'



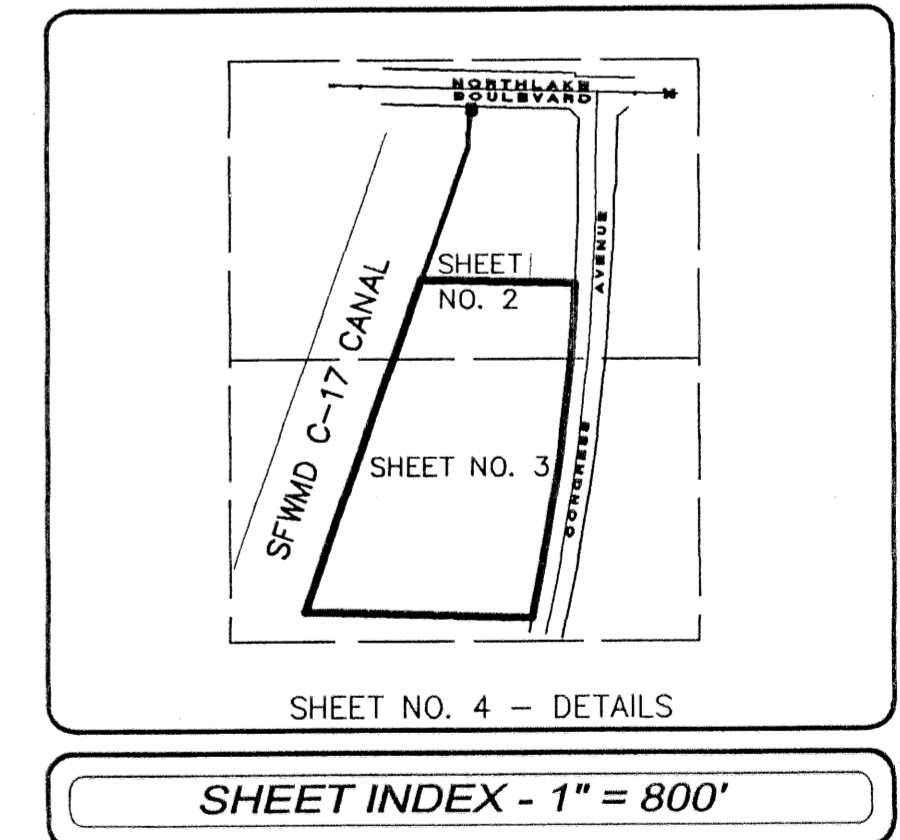
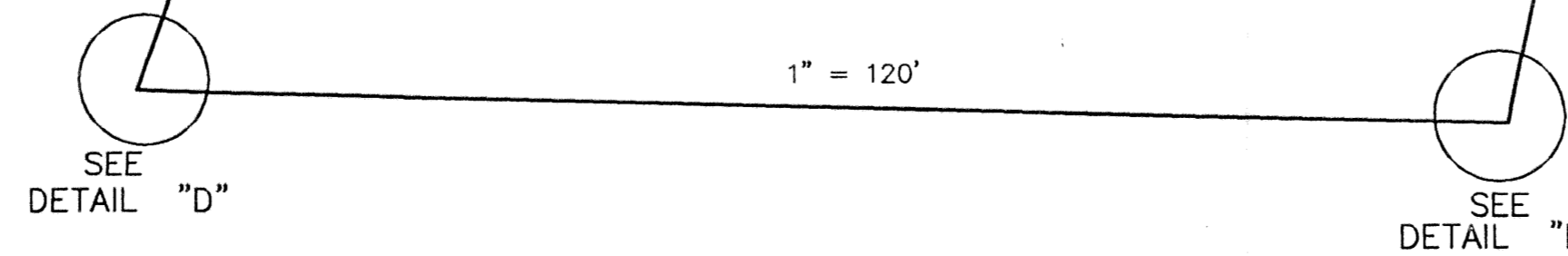
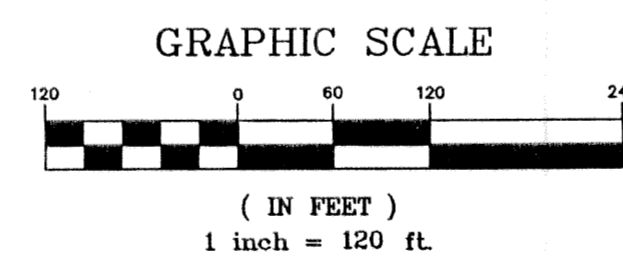
DETAIL "G"  
1" = 5'



DETAIL "F"  
1" = 5'



DETAIL "E"  
1" = 5'



**ENGINEERS INC.**  
CREECH ENGINEERS, INC.  
CIVILIZATION ENGINEERED  
203 WEST 3rd STREET STUART, FLORIDA 34994 (772)283-1413  
4450 WEST EAU GALLIE BLVD., MELBOURNE, FL 32934 (321) 255-5434  
707 EAST PARK AVENUE, TALLAHASSEE, FL 32301 (850) 841-1705  
BOARD OF PROFESSIONAL ENGINEERS, CERTIFICATE OF AUTHORIZATION NUMBER 9139  
PROFESSIONAL SURVEYORS AND MAPPERS, AMENDED CERTIFICATE NO. LB-006705