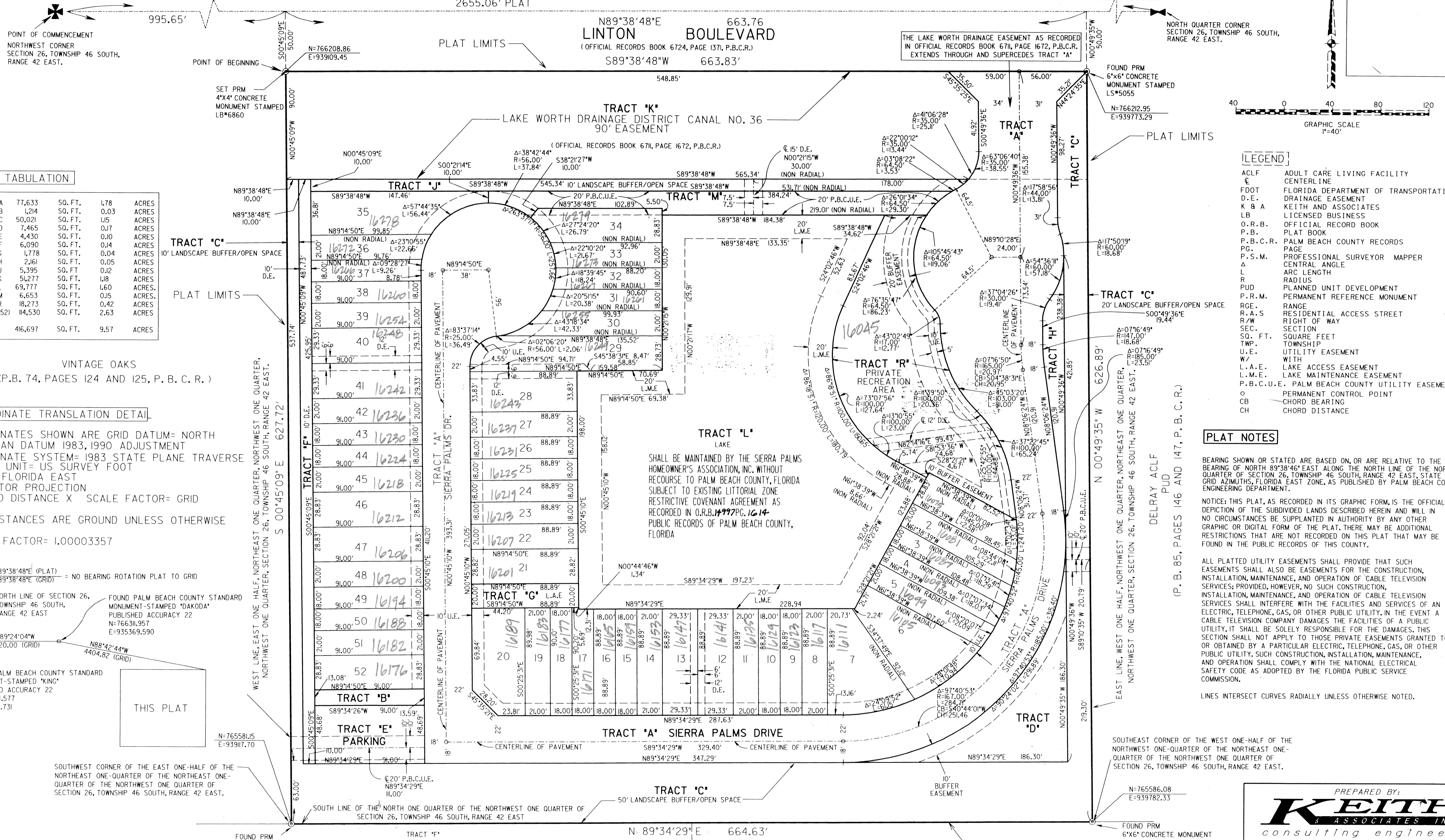


"SIERRA PALMS, P.U.D."

A REPLAT OF BOYSTOWN, CLF, AS RECORDED IN PLAT BOOK 68, PAGES 92 AND 93, PALM BEACH COUNTY RECORDS, LYING IN SECTION 26, TOWNSHIP 46 SOUTH, RANGE 42 EAST, PALM BEACH COUNTY, FLORIDA

EXISTING RIGHT-OF-WAY LINE (PLAT BOOK 29, PAGE 139)

FOUND NAIL & DISC



AREA TABULATION

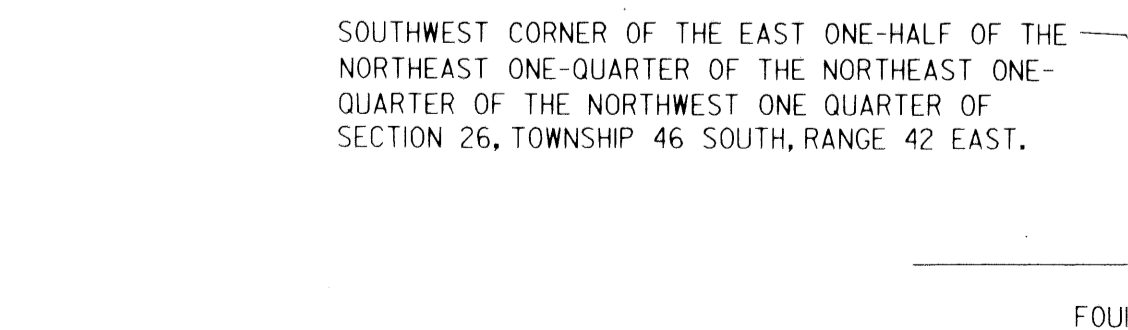
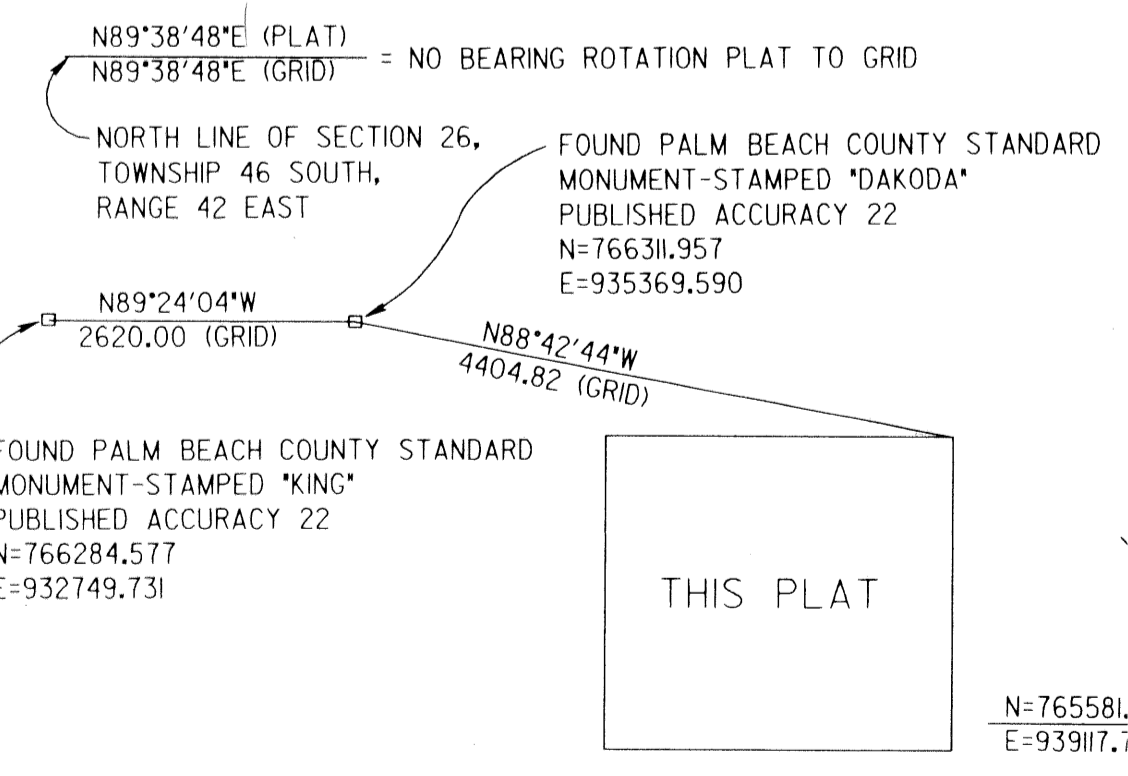
TRACT	AREA (SQ. FT.)	AREA (ACRES)
TRACT A	77,633	1.78
TRACT B	1,214	0.03
TRACT C	50,021	1.15
TRACT D	7,465	0.17
TRACT E	4,430	0.10
TRACT F	6,090	0.14
TRACT G	1,778	0.04
TRACT H	2,161	0.05
TRACT I	5,395	0.12
TRACT J	5,277	0.12
TRACT K	69,777	1.60
TRACT L	6,653	0.15
TRACT M	18,273	0.42
TRACT N	18,273	0.42
TRACT O	14,530	0.33
TRACT P	14,530	0.33
TRACT Q	14,530	0.33
TRACT R	14,530	0.33
TOTAL	416,697	9.57

VINTAGE OAKS (P.B. 74, PAGES 124 AND 125, P. B. C. R.)

COORDINATE TRANSLATION DETAIL

COORDINATES SHOWN ARE GRID DATUM= NORTH AMERICAN DATUM 1983, 1990 ADJUSTMENT
 COORDINATE SYSTEM= 1983 STATE PLANE TRAVERSE
 LINEAR UNIT= US SURVEY FOOT
 ZONE= FLORIDA EAST
 MERCATOR PROJECTION
 GROUND DISTANCE X SCALE FACTOR= GRID

ALL DISTANCES ARE GROUND UNLESS OTHERWISE NOTED
 SCALE FACTOR= 1.00003357



- LEGEND**
- ACLF ADULT CARE LIVING FACILITY
 - € CENTERLINE
 - FDOT FLORIDA DEPARTMENT OF TRANSPORTATION
 - D.E. DRAINAGE EASEMENT
 - K & A KEITH AND ASSOCIATES
 - LB LICENSED BUSINESS
 - O.R.B. OFFICIAL RECORD BOOK
 - P.B. PLAT BOOK
 - P.B.C.R. PALM BEACH COUNTY RECORDS
 - PAGE PAGE
 - P.S.M. PROFESSIONAL SURVEYOR MAPPER
 - ∠ CENTRAL ANGLE
 - L ARC LENGTH
 - R RADIUS
 - PUD PLANNED UNIT DEVELOPMENT
 - P.R.M. PERMANENT REFERENCE MONUMENT
 - RGE. RANGE
 - R.A.S. RESIDENTIAL ACCESS STREET
 - R/W RIGHT OF WAY
 - SEC. SECTION
 - SQ. FT. SQUARE FEET
 - TWP. TOWNSHIP
 - U.E. UTILITY EASEMENT
 - W/ WITH
 - L.A.E. LAKE ACCESS EASEMENT
 - L.M.E. LAKE MAINTENANCE EASEMENT
 - P.B.C.U.E. PALM BEACH COUNTY UTILITY EASEMENT
 - PERMANENT CONTROL POINT
 - CB CHORD BEARING
 - CH CHORD DISTANCE

PLAT NOTES

BEARING SHOWN OR STATED ARE BASED ON, OR ARE RELATIVE TO THE BEARING OF NORTH 89°38'46" EAST ALONG THE NORTH LINE OF THE NORTHWEST QUARTER OF SECTION 26, TOWNSHIP 46 SOUTH, RANGE 42 EAST, STATE PLANE GRID AZIMUTHS, FLORIDA EAST ZONE, AS PUBLISHED BY PALM BEACH COUNTY ENGINEERING DEPARTMENT.

NOTICE: THIS PLAT, AS RECORDED IN ITS GRAPHIC FORM, IS THE OFFICIAL DEFINITION OF THE SUBDIVIDED LANDS DESCRIBED HEREIN AND WILL IN NO CIRCUMSTANCES BE SUPPLANTED IN AUTHORITY BY ANY OTHER GRAPHIC OR DIGITAL FORM OF THE PLAT. THERE MAY BE ADDITIONAL RESTRICTIONS THAT ARE NOT RECORDED ON THIS PLAT THAT MAY BE FOUND IN THE PUBLIC RECORDS OF THIS COUNTY.

ALL PLATTED UTILITY EASEMENTS SHALL PROVIDE THAT SUCH EASEMENTS SHALL ALSO BE EASEMENTS FOR THE CONSTRUCTION, INSTALLATION, MAINTENANCE, AND OPERATION OF CABLE TELEVISION SERVICES; PROVIDED, HOWEVER, NO SUCH CONSTRUCTION, INSTALLATION, MAINTENANCE, AND OPERATION OF CABLE TELEVISION SERVICES SHALL INTERFERE WITH THE FACILITIES AND SERVICES OF AN ELECTRIC, TELEPHONE, GAS, OR OTHER PUBLIC UTILITY. IN THE EVENT A CABLE TELEVISION COMPANY DAMAGES THE FACILITIES OF A PUBLIC UTILITY, IT SHALL BE SOLELY RESPONSIBLE FOR THE DAMAGES. THIS SECTION SHALL NOT APPLY TO THOSE PRIVATE EASEMENTS GRANTED TO OR OBTAINED BY A PARTICULAR ELECTRIC, TELEPHONE, GAS, OR OTHER PUBLIC UTILITY. SUCH CONSTRUCTION, INSTALLATION, MAINTENANCE, AND OPERATION SHALL COMPLY WITH THE NATIONAL ELECTRICAL SAFETY CODE AS ADOPTED BY THE FLORIDA PUBLIC SERVICE COMMISSION.

LINES INTERSECT CURVES RADIALLY UNLESS OTHERWISE NOTED.

N 89°34'29" E 664.63'

TRACT	AREA (SQ. FT.)	AREA (ACRES)
TRACT A	77,633	1.78
TRACT B	1,214	0.03
TRACT C	50,021	1.15
TRACT D	7,465	0.17
TRACT E	4,430	0.10
TRACT F	6,090	0.14
TRACT G	1,778	0.04
TRACT H	2,161	0.05
TRACT I	5,395	0.12
TRACT J	5,277	0.12
TRACT K	69,777	1.60
TRACT L	6,653	0.15
TRACT M	18,273	0.42
TRACT N	18,273	0.42
TRACT O	14,530	0.33
TRACT P	14,530	0.33
TRACT Q	14,530	0.33
TRACT R	14,530	0.33
TOTAL	416,697	9.57

PREPARED BY:

KEITH & ASSOCIATES, INC.
consulting engineers

301 EAST ATLANTIC BOULEVARD
 POMPANO BEACH, FLORIDA 33060-6643
 (954) 788-3400 FAX (954) 788-3500
 EMAIL: mail@keith-associates.com LB NO. 6860