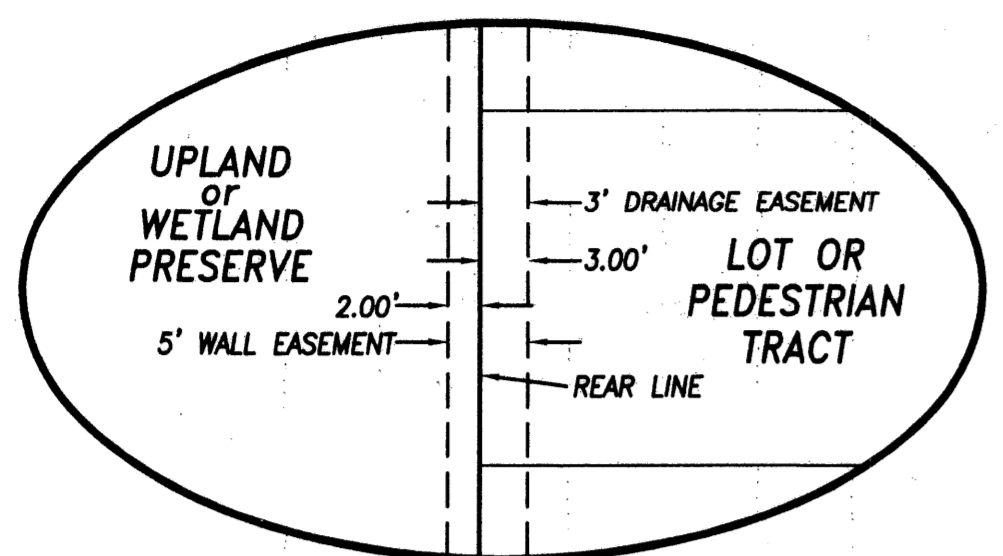
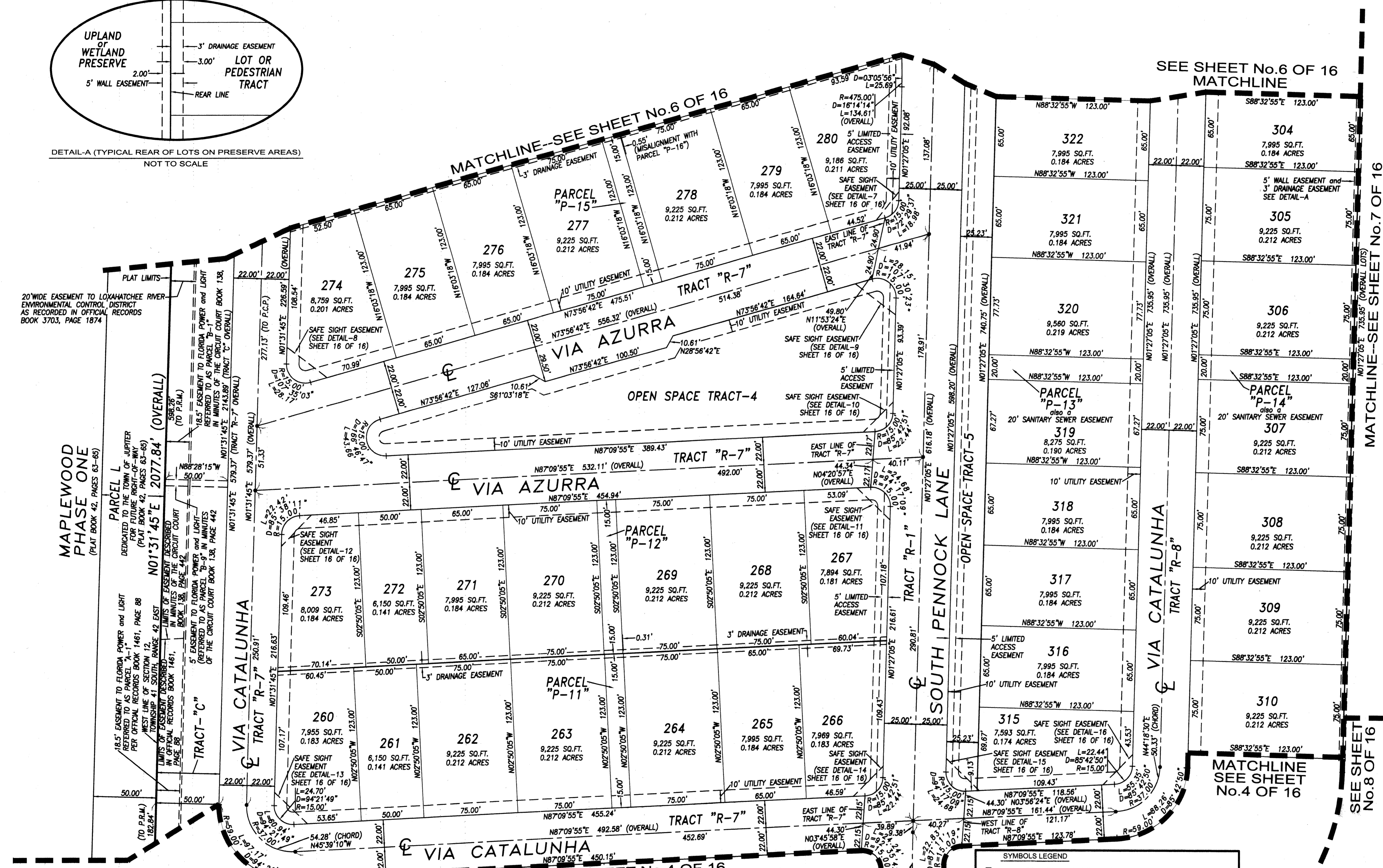


PINES ON PENNOCK LANE P.U.D. PLAT No.2 (PASEOS)
 A PARCEL OF LAND LYING IN THE WEST HALF OF SECTION 12, THE NORTHWEST QUARTER OF SECTION 13,
 and THE NORTHEAST QUARTER OF SECTION 14, TOWNSHIP 41 SOUTH, RANGE 42 EAST
 TOWN OF JUPITER, PALM BEACH COUNTY, FLORIDA
 SHEET 5 OF 16 MARCH 2003



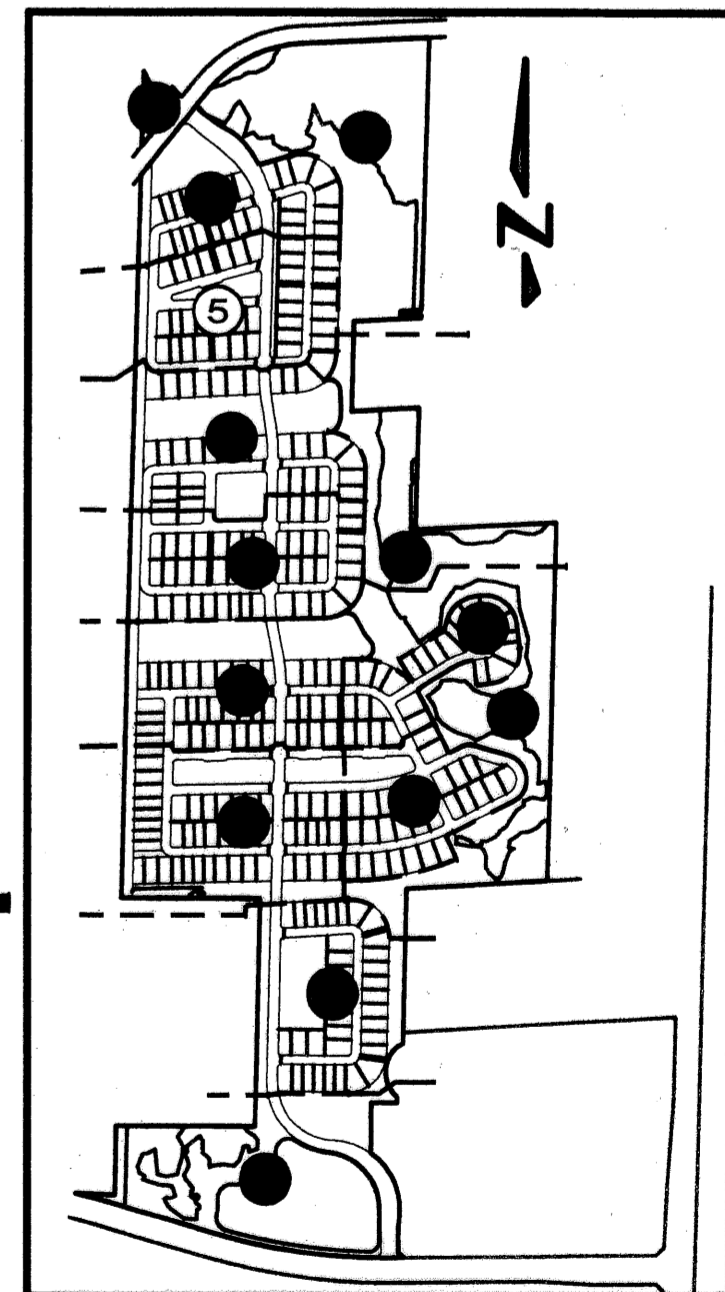
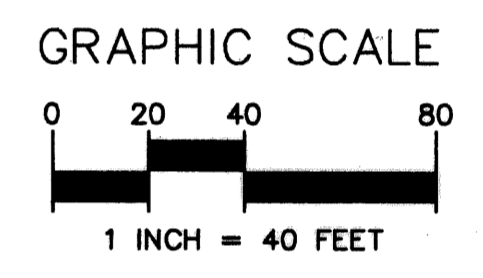
DETAIL-A (TYPICAL REAR OF LOTS ON PRESERVE AREAS)
NOT TO SCALE



SEE SHEET No.6 OF 16
MATCHLINE

MATCHLINE--SEE SHEET No.7 OF 16

MATCHLINE
SEE SHEET
No.4 OF 16

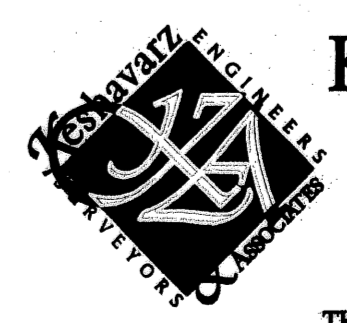


INDEX SHEET MAP
NOT TO SCALE

SYMBOLS LEGEND

■	SET PERMANENT REFERENCE MONUMENT (P.R.M.) "L.B.4897"
●	PERMANENT CONTROL POINT (P.C.P.)
NPB/D	NORTHERN PALM BEACH COUNTY IMPROVEMENT DISTRICT
R	RADIUS
D	CENTRAL ANGLE
L	ARC LENGTH
ECA	EXCLUSIVE COMMON AREA
C	CENTERLINE
P.O.B.	POINT OF BEGINNING
P.O.C.	POINT OF COMMENCING
C.D.	CHANGE IN DIRECTION
P.S.M.	PROFESSIONAL SURVEYOR AND MAPPER
P	POINT OF CURVATURE

*NOTE: ALL LOT LINES ARE RADIAL UNLESS OTHERWISE SPECIFIED.



Keshavarz & Associates, Inc.
 CONSULTING ENGINEERS - SURVEYORS
 711 N. Dixie Highway, Suite 201
 West Palm Beach, Florida 33401
 Tel: (561) 689-9600 Fax: (561) 689-7476 LB 4897
 THIS INSTRUMENT WAS PREPARED BY MANUEL A. GUTIERREZ, PSM
 PROFESSIONAL SURVEYOR AND MAPPER NO. 4102
 IN THE OFFICES OF KESHAVARZ & ASSOCIATES, INC.
 \\\KAFS\SU\687\dwg\687PLAT_SHT_05.dwg 03/06/03 08:10:23 AM EST