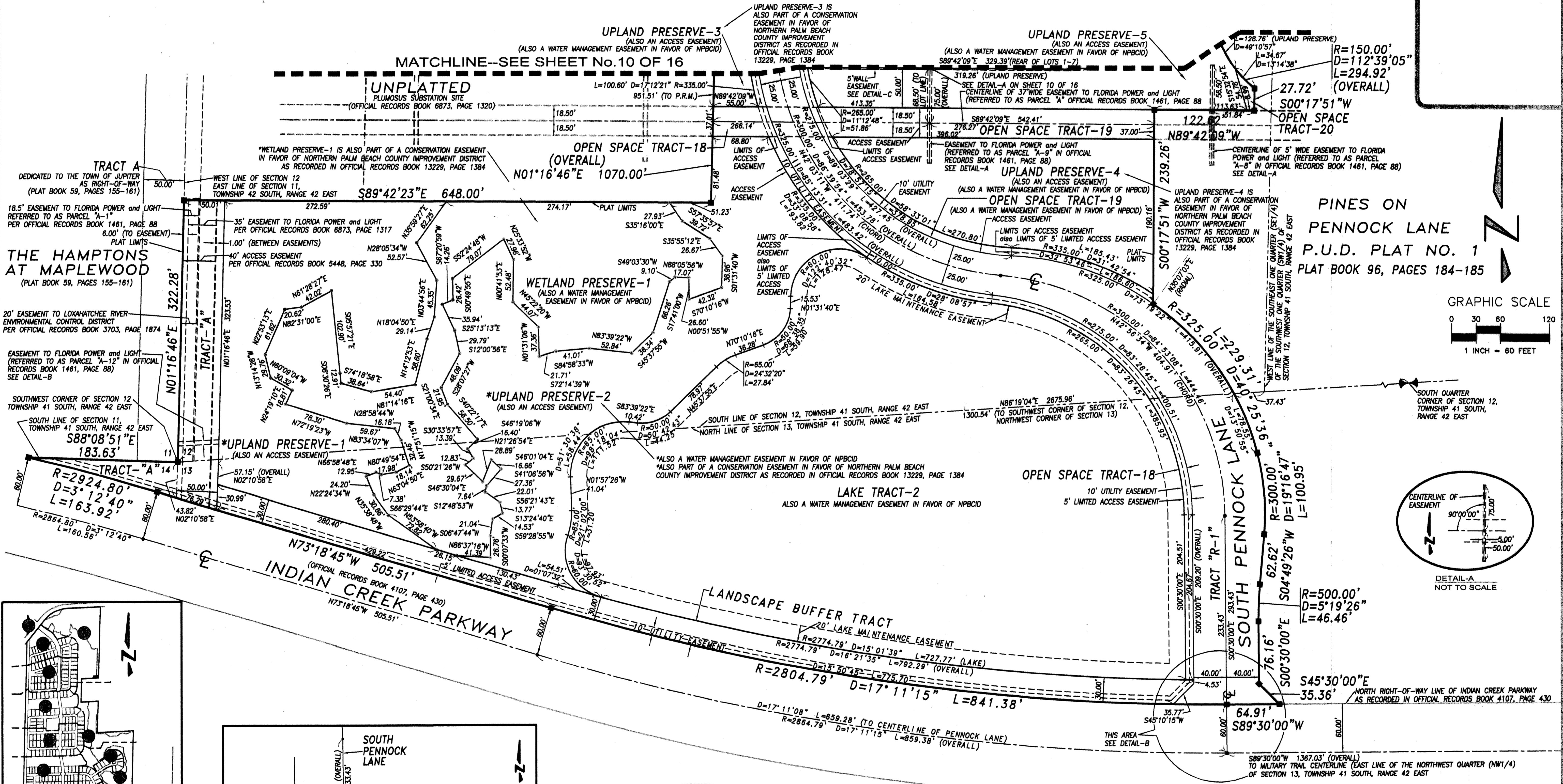
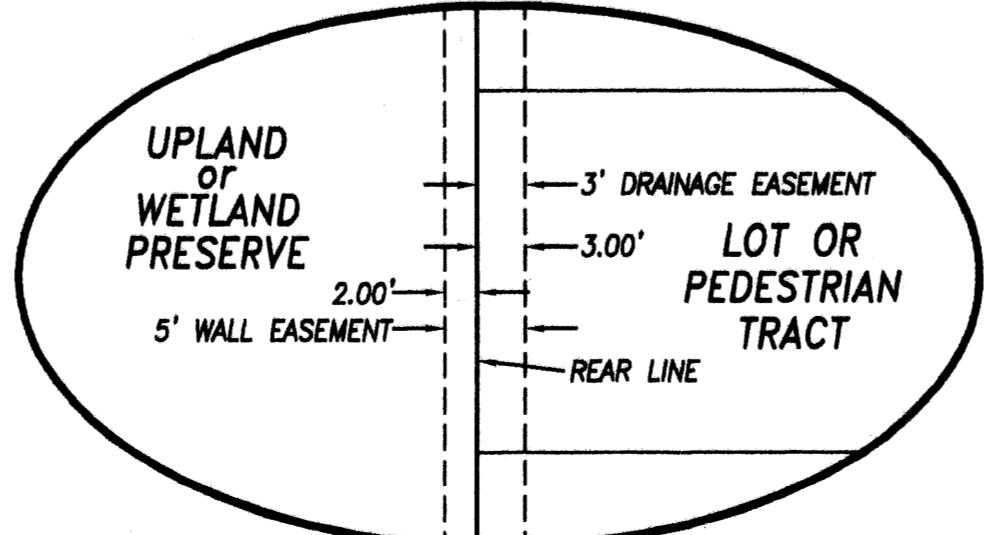
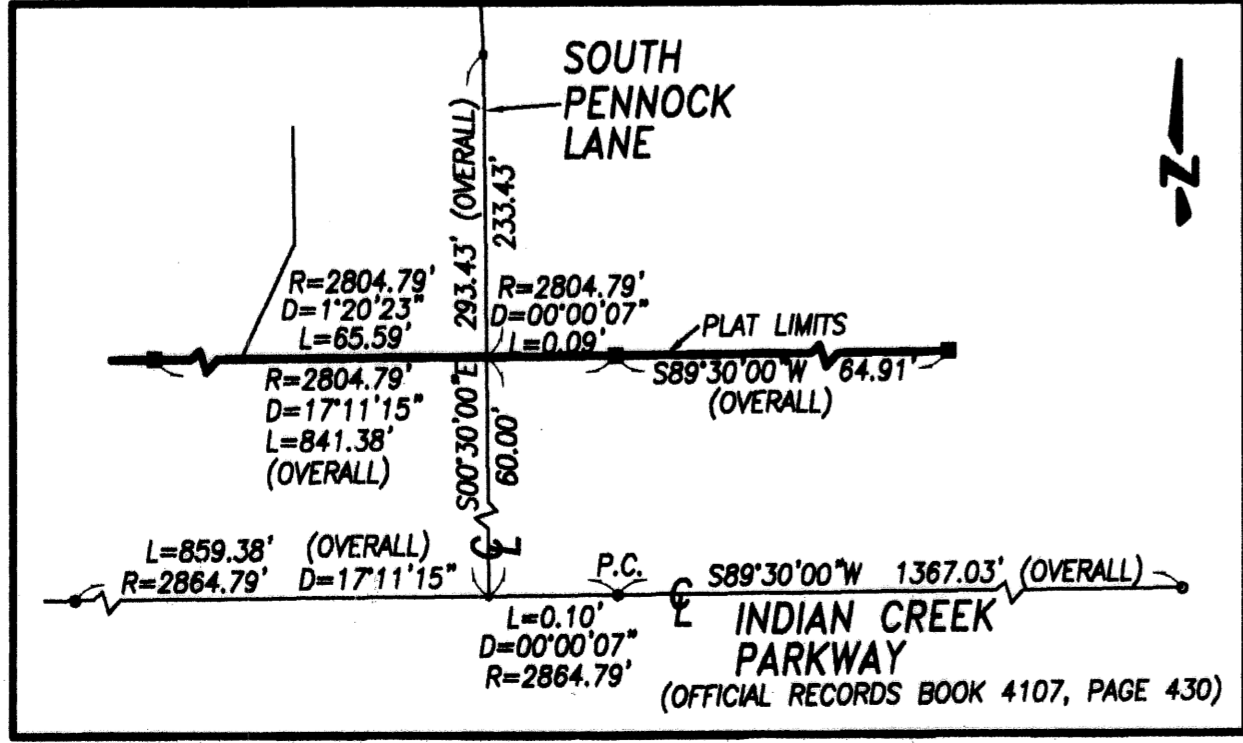
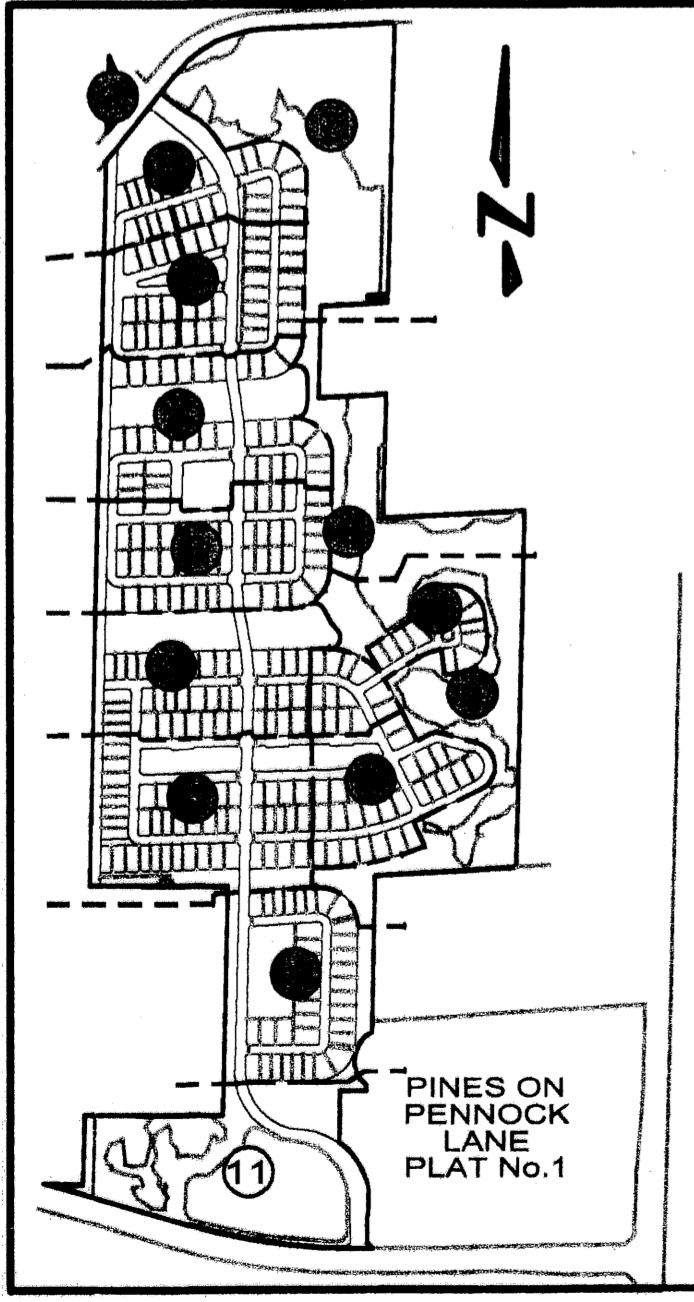
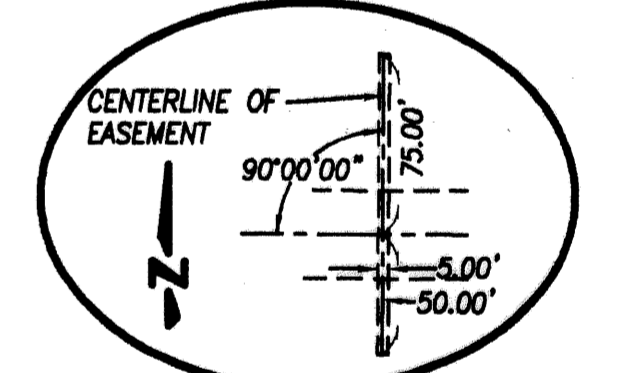
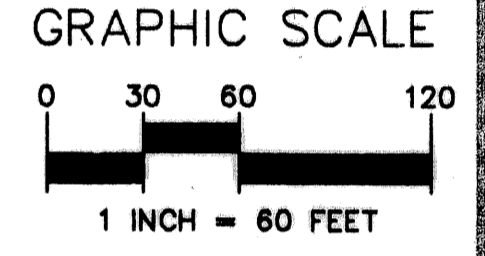


PINES ON PENNOCK LANE P.U.D. PLAT No.2 (PASEOS)

A PARCEL OF LAND LYING IN THE WEST HALF OF SECTION 12, THE NORTHWEST QUARTER OF SECTION 13,
and THE NORTHEAST QUARTER OF SECTION 14, TOWNSHIP 41 SOUTH, RANGE 42 EAST
TOWN OF JUPITER, PALM BEACH COUNTY, FLORIDA
SHEET 11 OF 16 MARCH 2003



PINES ON
PENNOCK LANE
P.U.D. PLAT NO. 1
PLAT BOOK 96, PAGES 184-185



ABACOA PLAT No.2
(PLAT BOOK 86, PAGES 16-28)

SYMBOLS LEGEND

- SET PERMANENT REFERENCE MONUMENT (P.R.M.) "L.B. 4897"
- PERMANENT CONTROL POINT (P.C.P.)
- NORTHERN PALM BEACH COUNTY IMPROVEMENT DISTRICT
- R RADIUS
- D CENTRAL ANGLE
- L ARC LENGTH
- EXCLUSIVE COMMON AREA
- CENTERLINE
- P.O.B. POINT OF BEGINNING
- P.O.C. POINT OF COMMENCING
- CHANGE IN DIRECTION
- PROFESSIONAL SURVEYOR AND MAPPER
- P.S.M. POINT OF CURVATURE
- P.C. CHANGE OF DIRECTION OF PRESERVE BOUNDARY



Keshavarz & Associates, Inc.
CONSULTING ENGINEERS - SURVEYORS
711 N. Dixie Highway, Suite 201
West Palm Beach, Florida 33401
Tel: (561) 689-9600 Fax: (561) 689-7476 LB 4897
THIS INSTRUMENT WAS PREPARED BY MANUEL A. GUTIERREZ, PSM
PROFESSIONAL SURVEYOR AND MAPPER NO. 4102
IN THE OFFICE OF KESHAVARZ & ASSOCIATES, INC.