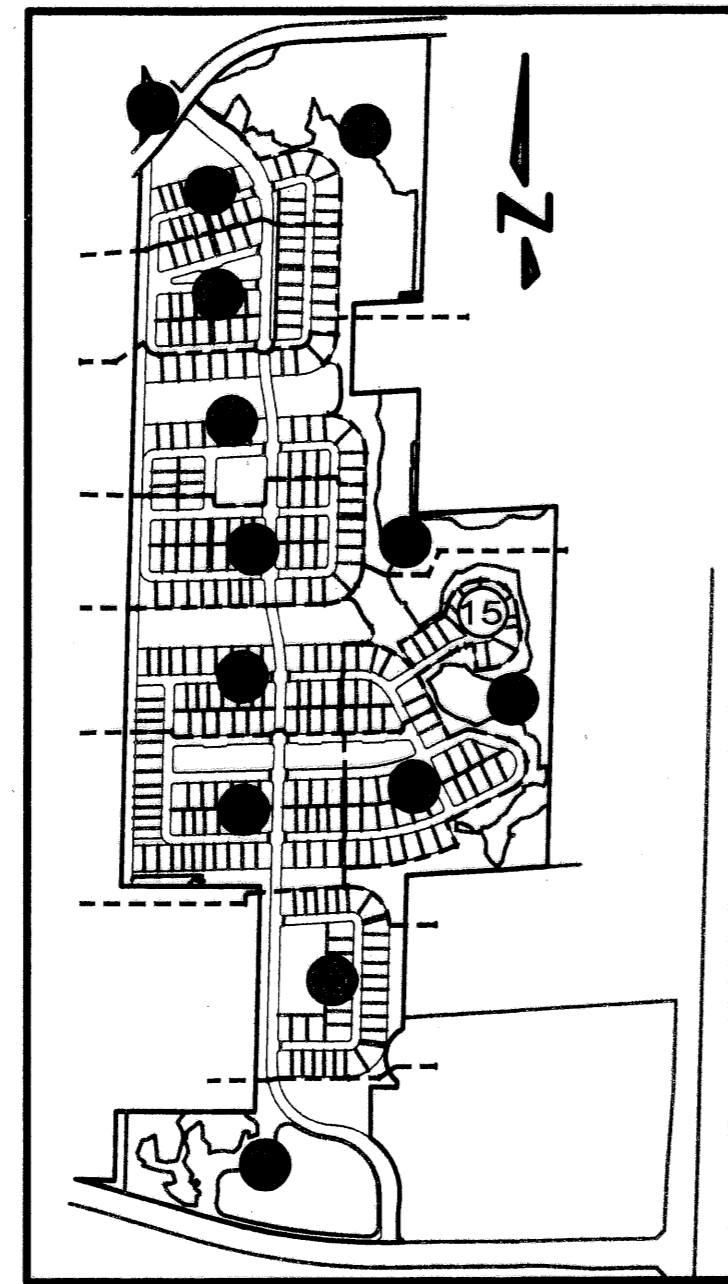
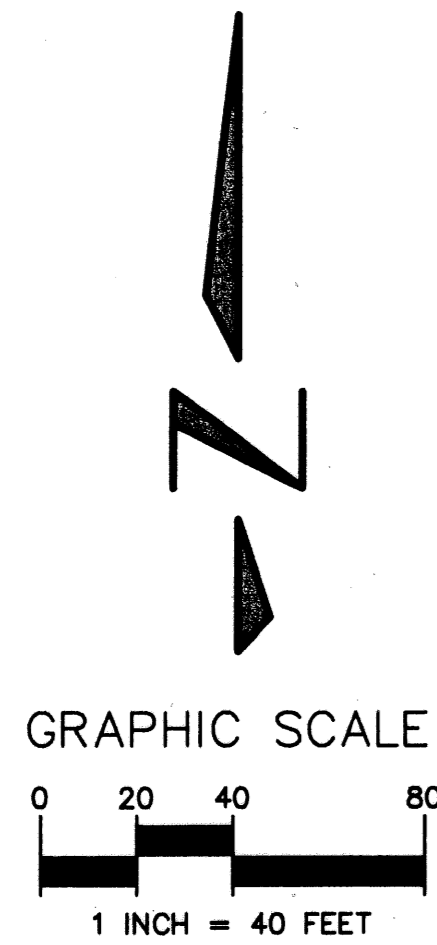
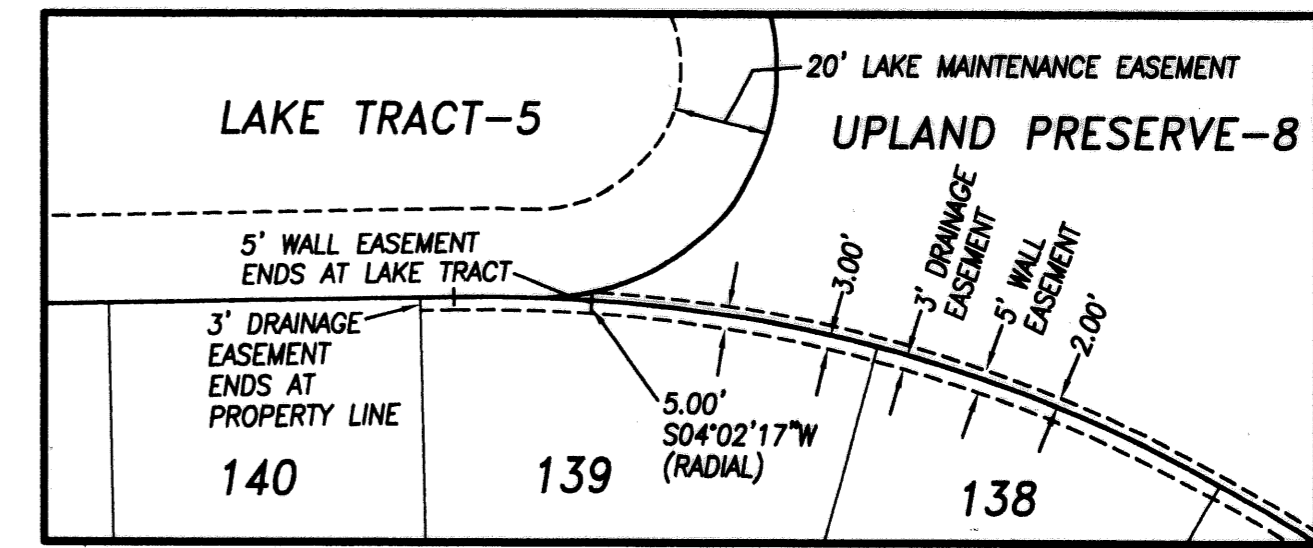


PINES ON PENNOCK LANE P.U.D. PLAT No.2 (PASEOS)

A PARCEL OF LAND LYING IN THE WEST HALF OF SECTION 12, THE NORTHWEST QUARTER OF SECTION 13, and THE NORTHEAST QUARTER OF SECTION 14, TOWNSHIP 41 SOUTH, RANGE 42 EAST TOWN OF JUPITER, PALM BEACH COUNTY, FLORIDA
SHEET 15 OF 16 MARCH 2003



INDEX SHEET MAP NOT TO SCALE



DETAIL-C (EASEMENTS AT REAR OF LOT 139) NOT TO SCALE

SEE SHEET No.13 OF 16

MATCHLINE-SEE SHEET No.9 OF 16

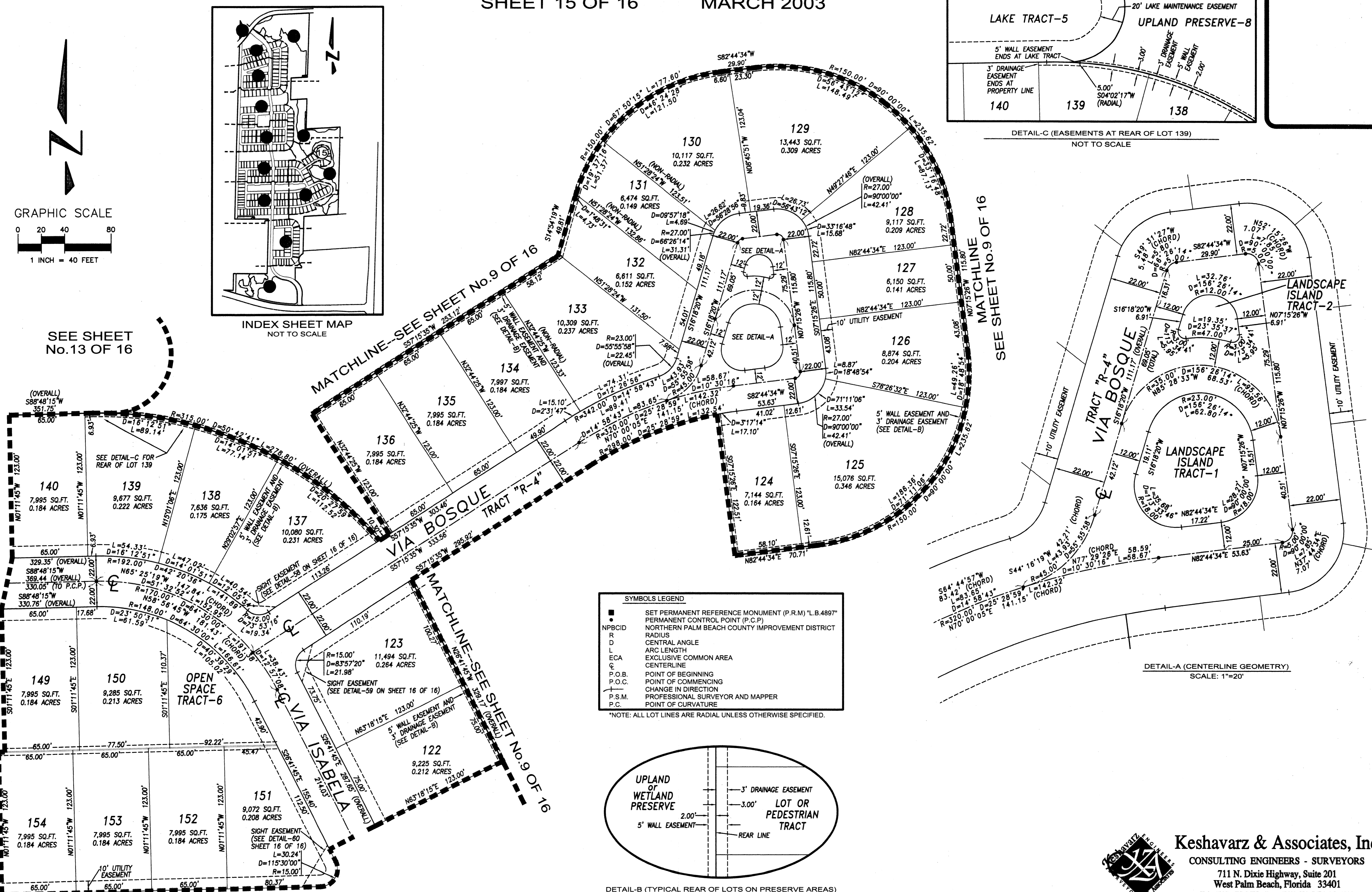
MATCHLINE SEE SHEET No.9 OF 16

SEE SHEET No.13 OF 16

MATCHLINE-SEE SHEET No.9 OF 16

SEE SHEET No.12 OF 16

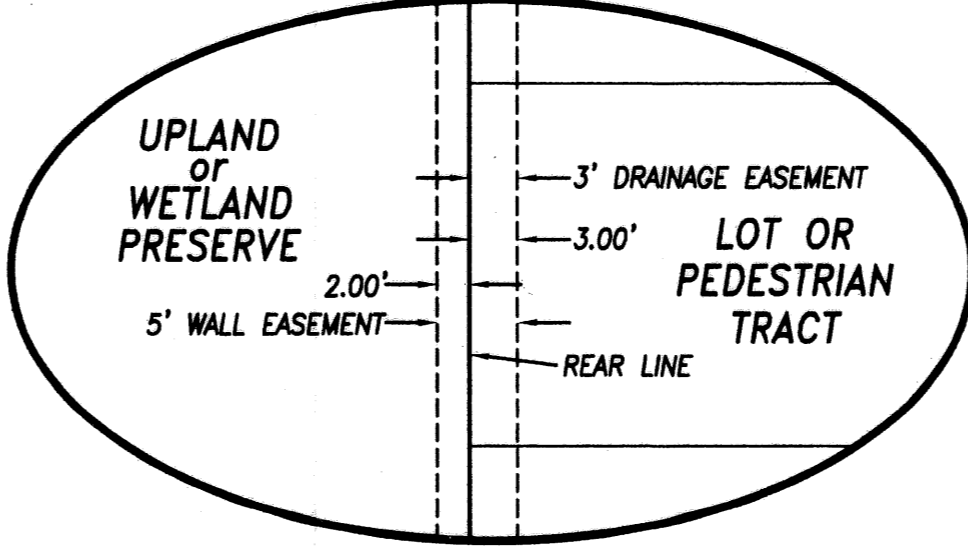
MATCHLINE SEE SHEET No.14 OF 16



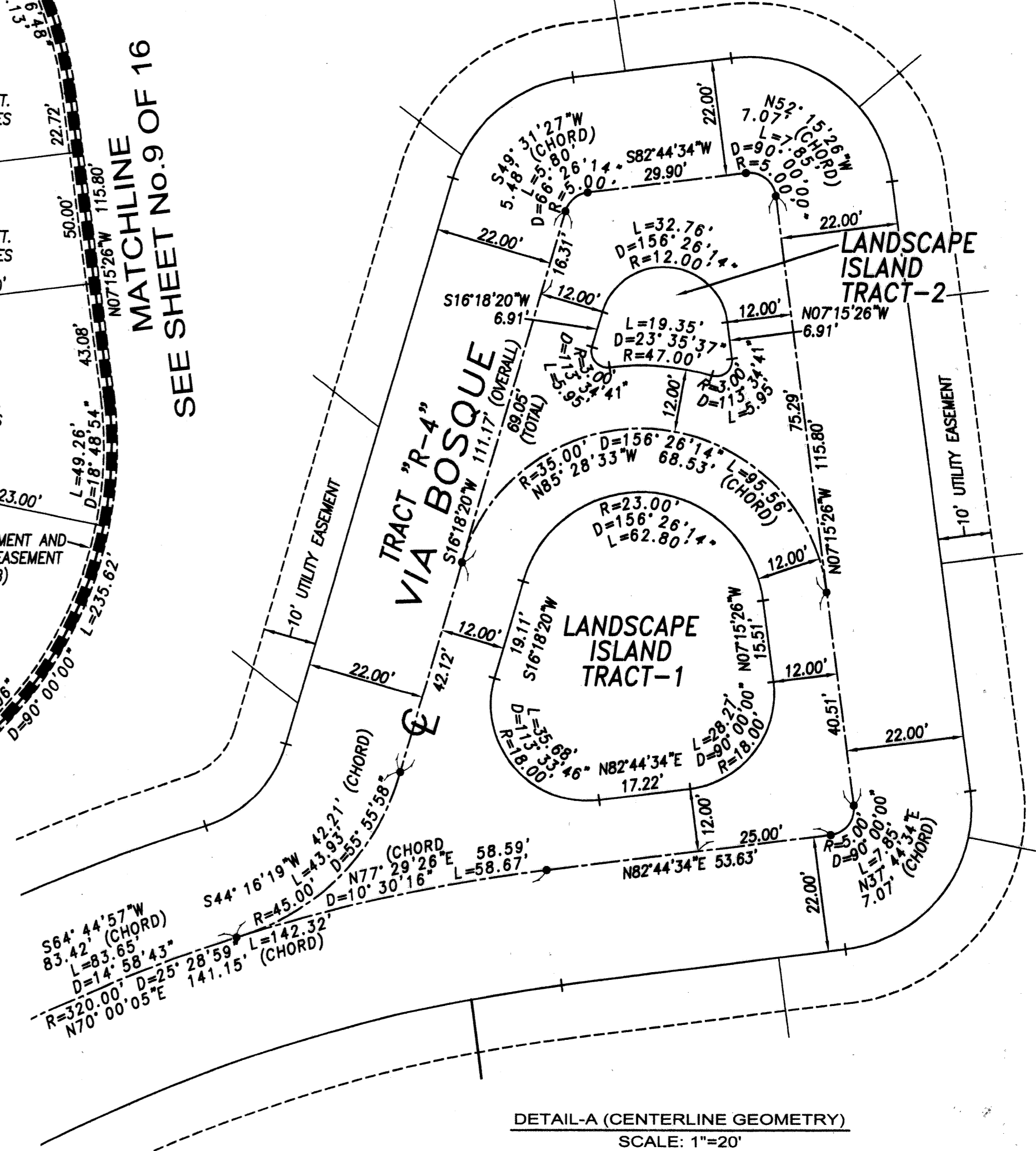
SYMBOLS LEGEND

■	SET PERMANENT REFERENCE MONUMENT (P.R.M.) "L.B.4897"
○	PERMANENT CONTROL POINT (P.C.P.)
NPBCID	NORTHERN PALM BEACH COUNTY IMPROVEMENT DISTRICT
R	RADIUS
D	CENTRAL ANGLE
L	ARC LENGTH
ECA	EXCLUSIVE COMMON AREA
C	CENTERLINE
P.O.B.	POINT OF BEGINNING
P.O.C.	POINT OF COMMENCING
—	CHANGE IN DIRECTION
P.S.M.	PROFESSIONAL SURVEYOR AND MAPPER
P.C.	POINT OF CURVATURE

*NOTE: ALL LOT LINES ARE RADIAL UNLESS OTHERWISE SPECIFIED.



DETAIL-B (TYPICAL REAR OF LOTS ON PRESERVE AREAS) NOT TO SCALE



DETAIL-A (CENTERLINE GEOMETRY) SCALE: 1"=20'



Keshavarz & Associates, Inc.
 CONSULTING ENGINEERS - SURVEYORS
 711 N. Dixie Highway, Suite 201
 West Palm Beach, Florida 33401
 Tel: (561) 689-8600 Fax: (561) 689-7476 LB 4897
 THIS INSTRUMENT WAS PREPARED BY MANUEL A. GUTIERREZ, PSM
 PROFESSIONAL SURVEYOR AND MAPPER NO. 4102
 IN THE OFFICES OF KESHAVARZ & ASSOCIATES, INC.