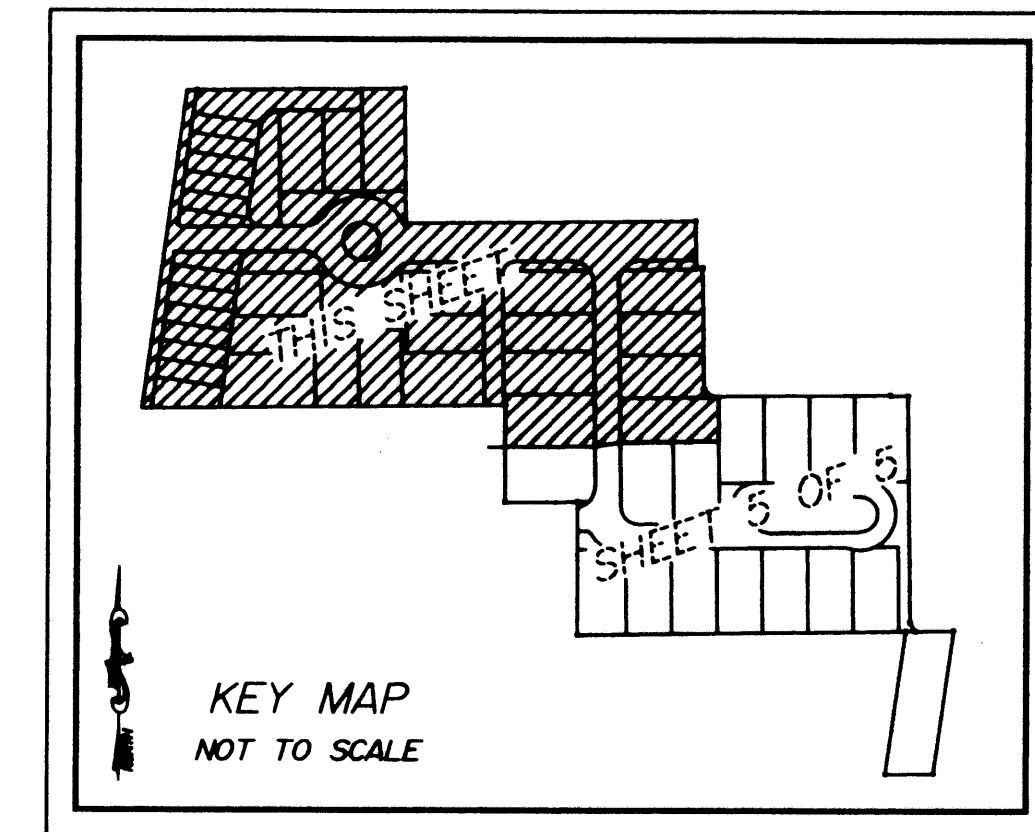


'SNOW HILL'
PER PLAT BOOK 21,
PAGE 83

'OLD PALM GROVE'

BEING A REPLAT OF A PORTION OF BLOCK 3, REVISED PLAT OF ROYAL PALM GARDENS, PLAT BOOK 15, PAGE 44;
LOTS 8, 9, 10, 11 AND 25, BLOCK B, PLAT No. 3, ROYAL PALM GARDENS, PLAT BOOK 21, PAGE 57;
LOT 5, EASTVIEW, PLAT BOOK 23, PAGE 44;
A PORTION OF LOT 1, CORRECTION MAP SHOWING SUBDIVISION OF PROPERTY OF HARRY SEEMILLER SITUATED
IN LOTS 36, 1, 2 AND 3, SECTION 9, TOWNSHIP 46 SOUTH, RANGE 43 EAST, PALM BEACH COUNTY, FLORIDA, PLAT BOOK 9, PAGE 72;
LOTS 1, 2, 3, 4 AND 5, BLOCK A, AND A PORTION OF ROYAL PALM BOULEVARD
PLAT No. 3 ROYAL PALM GARDENS, PLAT BOOK 21, PAGE 57; LOT 18, BLOCK C, LA-HACIENDA, PLAT BOOK 15, PAGE 6;
A PORTION OF LOT 83 AND TRACT 'B', ESTUARY II, PLAT BOOK 93, PAGES 129 AND 130;
A PORTION OF TRACT 'P-2' AND A PORTION OF 6 FOOT PERIMETER SIDEWALK EASEMENT, ESTUARY, PLAT BOOK 86, PAGES 75 THROUGH 80
SECTION 9, TOWNSHIP 46 SOUTH, RANGE 43 EAST
CITY OF DELRAY BEACH, PALM BEACH COUNTY, FLORIDA
JANUARY 2003
SHEET 4 OF 5

LEGEND:
A = ARC (LENGTH OF CURVE)
D = CENTRAL ANGLE OF CURVE
R = RADIUS OF CURVE
ORB = OFFICIAL RECORD BOOK
PG(S) = PAGE(S)
LB = LICENSED BUSINESS
SQ. FT. = SQUARE FEET
* = PERMANENT CONTROL POINT
□ = PERMANENT REFERENCE MONUMENT
PSM = PROFESSIONAL SURVEYOR AND MAPPER



10' DEDICATION TO THE
FLORIDA DEPARTMENT
OF TRANSPORTATION
(ORB 1532/2, PG 1222)

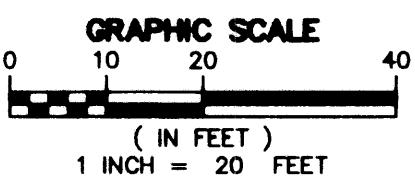
FEDERAL HIGHWAY (OB 1)

NON-VEHICULAR
LINE
10' DEDICATION TO THE
FLORIDA DEPARTMENT
OF TRANSPORTATION
(ORB 1532/2, PG 1222)

THIS INSTRUMENT WAS PREPARED BY:
WILLIAM D. O'CONNOR, P.S.M.
1300 Corporate Center Way
Suite 201
Wellington
Florida 33414-8593



Engineers - Planners
Land Surveyors
Environmental Professionals
(561)798-9981
Fax: (561)795-9406



LOT 1
'EASTVIEW'
PER PLAT BOOK 23,
PAGE 44

ESTUARY I
PER PLAT BOOK 93,
PAGES 129 AND 130

CENTERLINE
10' FLOW THROUGH
EASEMENT
ROYAL PALM BOULEVARD (TRACT A)
300.00'

ROYAL PALM
BOULEVARD

ESTUARY I
PER PLAT BOOK 93,
PAGES 129 AND 130

MATCHLINE SEE SHEET 5 OF 5